

UL/cUL SYSTEM NO. F-A-2316

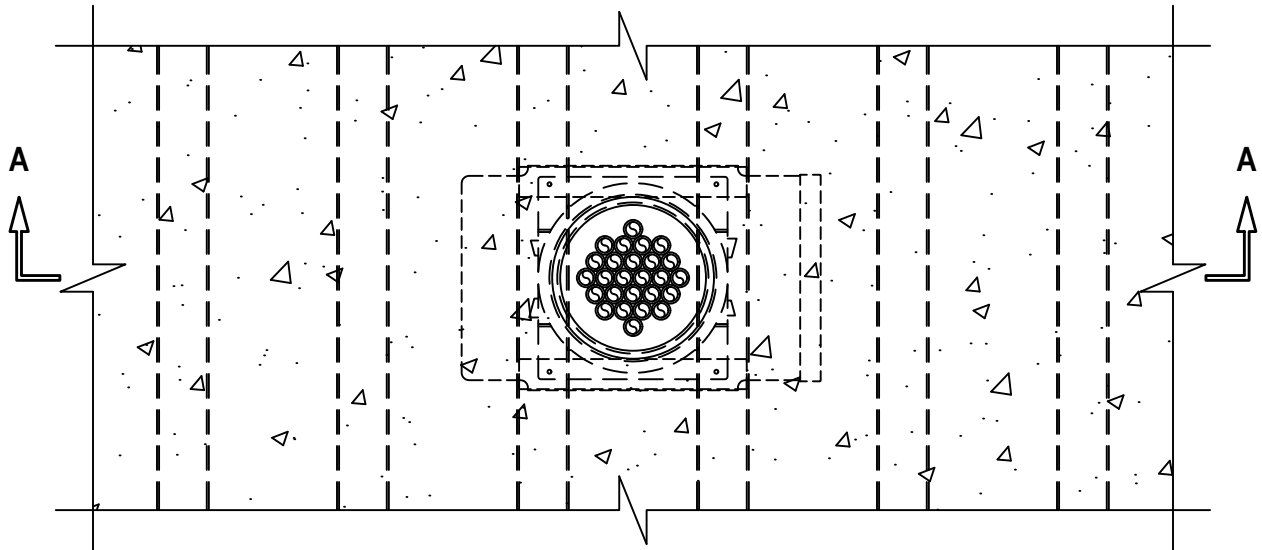
PEX LINES THROUGH CONCRETE FLOOR OVER METAL DECKING ASSEMBLY

F-RATING = 2-HR.

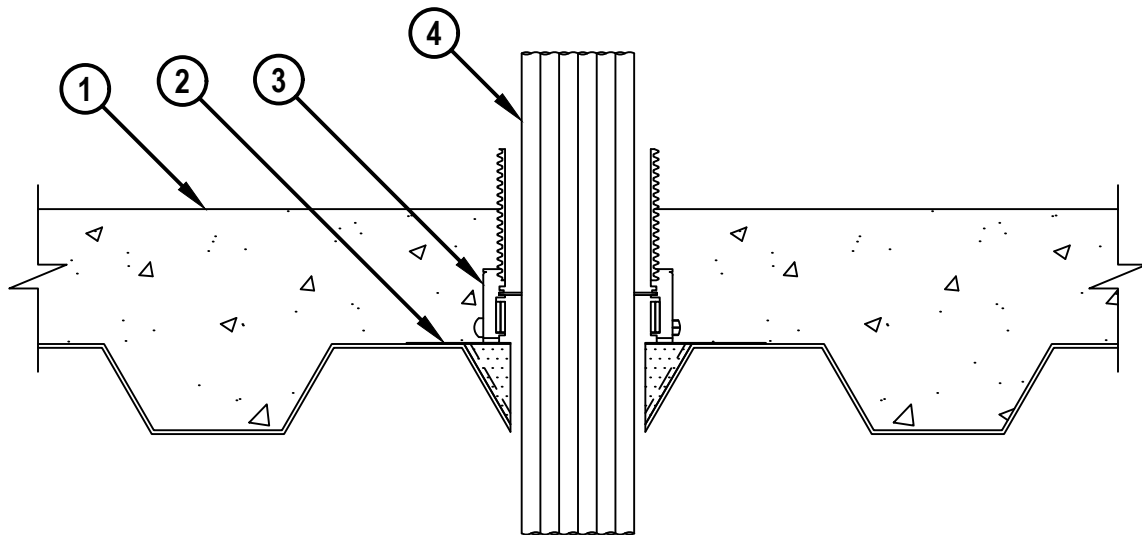
T-RATING = 0-HR. OR 2-HR.

NOTE : TESTED WITH A 2.5 PRESSURE DIFFERENTIAL

TOP VIEW



SECTION A-A



FA2316b.111319



HILTI, Inc.
Plano, Texas USA (800) 879-8000

Sheet 1 of 2
Scale 5/32" = 1"
Date Nov.13, 2019

Drawing No.
**FA
2316b**

Saving Lives through Innovation and Education

PEX LINES THROUGH CONCRETE FLOOR OVER METAL DECKING ASSEMBLY

F-RATING = 2-HR.

T-RATING = 0-HR. OR 2-HR.

NOTE : TESTED WITH A 2.5 PRESSURE DIFFERENTIAL

FA2316b.111319

1. LIGHTWEIGHT OR NORMAL WEIGHT CONCRETE FLOOR ASSEMBLY (MINIMUM 4-1/2" THICK) OVER METAL DECKING (UL/cUL CLASSIFIED D900 SERIES) WITH 2" OR 3" FLUTED DECKS (2-HR. FIRE-RATING).
2. HILTI CFS-CID MD PLT [W2" OR W3"] METAL DECK PLATFORM SECURED TO DECK WITH ONE FASTENER IN EACH CORNER.
3. HILTI CFS-CID MD [P OR PX] [2", 3", OR 4"]/[2.5"/4"] FIRESTOP CAST-IN DEVICE FOR METAL DECK SECURED TO HILTI CFS-CID MD PLT METAL DECK PLATFORM WITH SCREWS.
4. MAXIMUM 4" NOMINAL DIAMETER BUNDLE OF MAXIMUM 1/2" NOMINAL DIAMETER PEX TUBING (SDR 9) (CLOSED OR VENTED PIPING SYSTEM).

NOM BUNDLE DIAMETER	PRODUCT DESCRIPTION	T-RATING, HR.
2 IN. (51 MM)	CFS-CID MD [P OR PX] 2"	2
3 IN. (76 MM)	CFS-CID MD [P OR PX] 3"	2
4 IN. (102 MM)	CFS-CID MD [P OR PX] 4"	2

NOTES : 1. WHEN BUNDLE SIZES ARE SMALLER THAN LISTED IN TABLE ABOVE, MINIMUM 4" THICKNESS MINERAL WOOL (MIN. 4 PCF DENSITY) SHALL BE TIGHTLY PACKED WITHIN CAST-IN FIRESTOP DEVICE TO THE FULLEST EXTENT POSSIBLE.
 2. WHEN BUNDLE SIZES ARE SMALLER THAN LISTED IN TABLE ABOVE, T-RATING = 0-HR.



HILTI, Inc.
 Plano, Texas USA (800) 879-8000

Sheet	2 of 2
Scale	-
Date	Nov.13, 2019

Drawing No.
**FA
 2316b**