

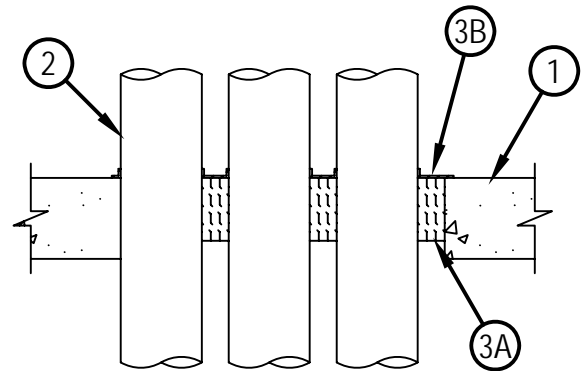
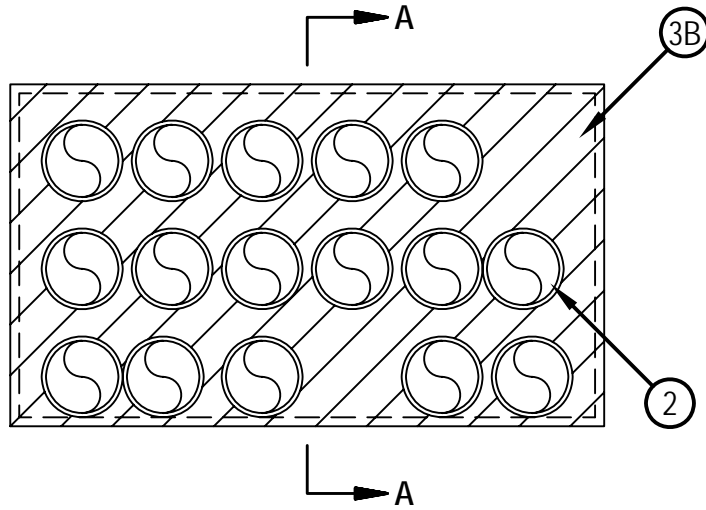


Classified by
Underwriters Laboratories, Inc.
to UL 1479 and CAN/ULC-S115

System No. C-AJ-1606

F Rating — 2 Hr
T Rating — 1/2 Hr

CAJ 1606



SECTION A-A

1. Floor or Wall Assembly — Min 4-1/2 in. (114 mm) thick reinforced lightweight or normal weight (100-150 pcf or 1600-2400 kg/m³) concrete. Wall may also be constructed of any UL Classified Concrete Blocks*. Max area of opening is 576 sq in. (3716 cm²) with max dimension of 32 in. (81 cm). See Concrete Blocks (CAZT) category in the Fire Resistance Directory for names of manufacturers.
2. Through Penetrants — One or more penetrants to be installed in opening. The annular space between penetrants shall be min 1/4 in. (6 mm) to max 5-1/2 in. (127 mm). The annular space between penetrants and periphery of through opening shall be min 0 in. (point contact) to max 7 in. (178 mm). Pipe or conduit to be rigidly supported on both sides of floor or wall assembly. The following types and sizes of metallic pipes or conduits may be used:
 - A. Steel Pipe — Nom 4 in. (102 mm) diam (or smaller) Schedule 10 (or heavier) steel pipe.
 - B. Conduit — Nom 4 in. (102 mm) diam (or smaller) steel electrical metallic tubing or steel conduit.
 - C. Iron Pipe — Nom 4 in. (102 mm) diam (or smaller) cast or ductile iron pipe.
3. Firestop System — The details of the firestop system shall be as follows:
 - A. Packing Material — Min 4 in. (102 mm) thickness of min 4 pcf (64 kg/m³) mineral wool batt insulation firmly packed into the opening as a permanent form. Packing material to be installed flush with top surface of floor or both surfaces of wall to accommodate the fill material.
 - B. Fill, Void, or Cavity Material* — Spray — Min 1/8 in. (3 mm) wet thickness applied to completely cover mineral wool batt packing material between and around penetrants on top surface of floor or both sides of wall. Spray material to overlap min 1/2 in. (13 mm) onto floor or wall surfaces and onto penetrants.

HILTI CONSTRUCTION CHEMICALS, DIV OF HILTI INC — CP672 Firestop Spray or CFS-SP WB Firestop Joint Spray

*Bearing the UL Classification Mark



Hilti Firestop Systems

Reproduced by HILTI, Inc. Courtesy of
Underwriters Laboratories, Inc.

June 17, 2010