

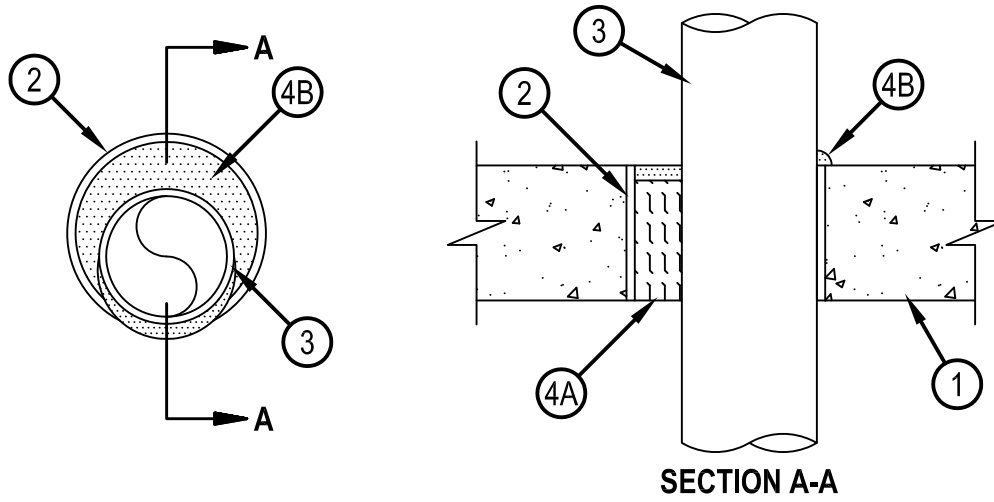


Classified by
Underwriters Laboratories, Inc.
to UL 1479 and CAN/ULC-S115

System No. C-AJ-1609

CAJ 1609

ANSI/UL1479 (ASTM E814)	CAN/ULC S115
F Rating — 2Hr	F Rating — 2 Hr
T Ratings — 0 Hr	FT Ratings — 0 Hr
L Rating At Ambient — Less Than 1 CFM/sq ft	FH Rating — 2 Hr
L Rating At 400 F — 4 CFM/sq ft	FTH Ratings — 0 Hr
W Rating — Class 1 (See Item 4)	L Rating At Ambient — Less Than 1 CFM/sq ft
	L Rating At 400 F — 4 CFM/sq ft



1. Floor or Wall Assembly — Min 4-1/2 in. (114 mm) thick reinforced lightweight or normal weight (100-150 pcf or 1600-2400 kg/m³) concrete. Wall may also be constructed of any UL Classified Concrete Blocks*.
See Concrete Blocks (CAZT) category in the Fire Resistance Directory for names of manufacturers.
2. Nonmetallic Sleeve — Nom 6 in. (152 mm) diam (or smaller) Sch 40 polyvinyl chloride (PVC) pipe cast or grouted into floor or wall assembly, flush with floor or wall surfaces.
3. Through Penetrant — One metallic pipe or tube to be installed either concentrically or eccentrically within the firestop system. Pipe or tube to be rigidly supported on both sides of floor or wall assembly. The annular space shall be min 0 in. (point contact) to max 2-7/8 in. (73 mm). The following types and sizes of metallic pipes or tubing may be used:
 - A. Steel Pipe — Nom 4 in. (102 mm) diam (or smaller) Schedule 10 (or heavier) steel pipe.
 - B. Iron Pipe — Nom 4 in. (102 mm) diam (or smaller) cast or ductile iron pipe.
 - C. Conduit — Nom 4 in. (102 mm) diam (or smaller) steel electrical metallic tubing or steel conduit.
 - D. Copper Tubing — Nom 3 in. (76 mm) diam (or smaller) Type L (or heavier) copper tubing.
 - E. Copper Pipe — Nom 3 in. (76 mm) diam (or smaller) Regular (or heavier) copper pipe
4. Firestop System — The firestop system shall consist of the following:
 - A. Packing Material — Min 4 in. (102 mm) thickness of min 4 pcf (64 kg/m³) mineral wool batt insulation firmly packed into sleeved opening as a permanent form. Packing material to be recessed from top end of sleeve for floors or from both ends of sleeve for walls to accommodate the required thickness of fill material.
 - B. Fill, Void or Cavity Material* — Sealant — Min 1/2 in. (13 mm) thickness of fill material applied within the annulus, flush with the top end of the sleeve for floors or with both ends of the sleeve for walls. Min 1/2 in. (13 mm) thick bead of sealant to be installed around pipe at interface with sleeve at point contact installations. W Rating applies only when FS-ONE MAX Intumescent Sealant is used. an additional film of sealant shall be applied over the sleeve lapping at least 1/2 in. (13 mm) onto top surface of floor or both surfaces of wall.
HILTI CONSTRUCTION CHEMICALS, DIV OF HILTI INC — CP606 Sealant, FS-ONE Sealant or FS-ONE MAX Intumescent Sealant.

* Indicates such products shall bear the UL or cUL Certification Mark for jurisdictions employing the UL or cUL Certification (such as Canada), respectively.



Hilti Firestop Systems

Reproduced by HILTI, Inc. Courtesy of
Underwriters Laboratories, Inc.
February 20, 2015