

UL/cUL SYSTEM NO. HW-D-0882

TOP OF WALL JOINT : GYPSUM SHAFT WALL ASSEMBLY

ASSEMBLY RATING = 1-HR. OR 2-HR.

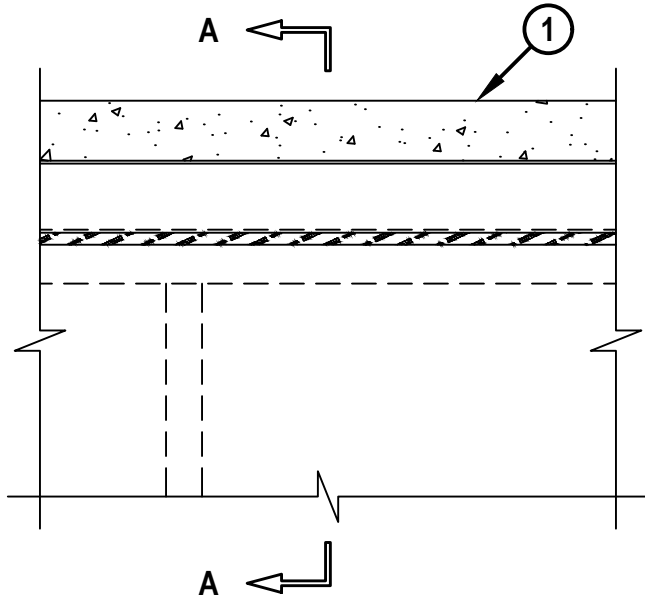
CLASS II OR III MOVEMENT CAPABILITIES - 50% COMPRESSION OR EXTENSION

L-RATING AT AMBIENT = LESS THAN 1 CFM / LIN FT

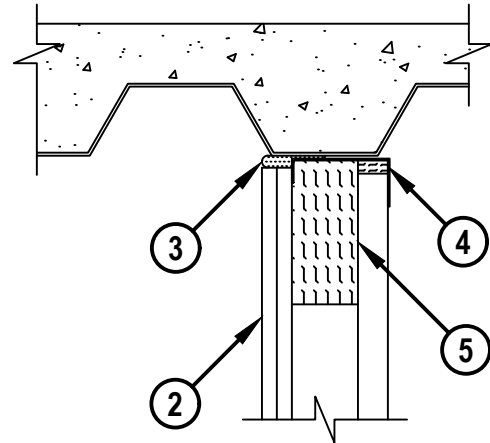
L-RATING AT 400°F = LESS THAN 1 CFM / LIN FT

HWD0882c.052421

FRONT VIEW

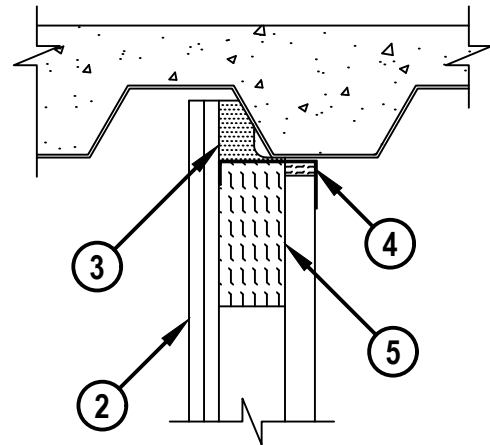


SECTION A-A



CONFIGURATION A

SECTION A-A



CONFIGURATION B



HILTI, Inc.
Plano, Texas USA (800) 879-8000

Sheet	1 of 2
Scale	1/8" = 1"
Date	May 24, 2021

Drawing No.
**HWD
0882c**

Saving Lives through Innovation and Education

UL/cUL SYSTEM NO. HW-D-0882

TOP OF WALL JOINT : GYPSUM SHAFT WALL ASSEMBLY

ASSEMBLY RATING = 1-HR. OR 2-HR.

CLASS II OR III MOVEMENT CAPABILITIES - 50% COMPRESSION OR EXTENSION

L-RATING AT AMBIENT = LESS THAN 1 CFM / LIN FT

L-RATING AT 400°F = LESS THAN 1 CFM / LIN FT

HW-D-0882c-052421

1. LIGHTWEIGHT OR NORMAL WEIGHT CONCRETE FLOOR (MINIMUM 2-1/2" THICK) OVER METAL DECKING ASSEMBLY (UL/cUL CLASSIFIED) (1-HR. OR 2-HR. FIRE-RATING).
2. GYPSUM SHAFT WALL ASSEMBLY (UL/cUL CLASSIFIED U400 OR V400 SERIES) (1-HR. OR 2-HR. FIRE-RATING) (2-HR. SHOWN) TO INCLUDE THE FOLLOWING CONSTRUCTION FEATURES :
 - A. "J" SHAPED CEILING RUNNER, MINIMUM 4" WIDE WITH LEGS OF 1" AND 2" (MINIMUM 20 GA.) FASTENED TO UNDERSIDE OF DECK OR FLOOR WITH STEEL FASTENERS OR ANCHORS SPACED MAXIMUM 24" O.C.
 - 1) FOR CONFIGURATION A, CEILING RUNNER INSTALLED CENTERED UNDER THE VALLEY OF THE DECK.
 - 2) FOR CONFIGURATION B, CEILING RUNNER MAY BE OFFSET TO EXTEND MAXIMUM 1" INTO AREA OF FLUTE.
 - B. "C-H" OR "C-T" SHAPED STUDS (MINIMUM 4" WIDE, MINIMUM 20 GA.) CUT 1/2" LESS IN LENGTH THAN ASSEMBLY HEIGHT, NESTING IN CEILING RUNNER.
 - C. NOMINAL 1" THICK GYPSUM LINER PANEL CUT 3/4" LESS IN LENGTH THAN FLOOR TO CEILING HEIGHT. TYPE, AND SHEET ORIENTATION AS SPECIFIED IN THE INDIVIDUAL UL DESIGN.
 - D. NOMINAL 5/8" THICK "TYPE C" GYPSUM WALLBOARD APPLIED VERTICALLY OR HORIZONTALLY IN ONE OR TWO LAYERS FOR 1 OR 2 HOUR RATED WALLS RESPECTIVELY. SCREW ATTACHING THE GYPSUM BOARD TO THE STUDS SHALL BE LOCATED 3-1/2" TO 5-1/2" BELOW THE BOTTOM PLANE OF THE FLOOR.
3. HILTI CFS-TTS MD OS FIRESTOP TOP TRACK SEAL INSTALLED OVER CEILING RUNNER ON FINISHED SIDE OF WALL PRIOR TO ATTACHMENT TO UNDERSIDE OF STEEL FLOOR UNIT IN ACCORDANCE WITH THE ACCOMPANYING INSTALLATION INSTRUCTIONS. FOR CONFIGURATION B, HILTI CFS-TTS MD OS TO BE PUSHED UPWARDS INTO FLUTE AS DRYWALL RUNS PAST.
4. MINIMUM 1-1/4" THICK HILTI CP 767 SPEED STRIP OR 1" THICKNESS MINERAL WOOL SAFING (MIN. 4 PCF DENSITY) COMPRESSED 50% TO FILL SPACE WITHIN CEILING RUNNER ABOVE GYPSUM LINER.
5. MINIMUM 6" WIDE MINERAL WOOL SAFING (MIN. 4 PCF DENSITY) COMPRESSED 33% AND BUTTED TO UNDERSIDE OF CEILING RUNNER. DEPTH OF MINERAL WOOL TO EQUAL THE WIDTH OF CEILING RUNNER.

NOTE : MAXIMUM WIDTH OF JOINT = 1/2".



HILTI, Inc.
Plano, Texas USA (800) 879-8000

Sheet	2 of 2
Scale	-
Date	May 24, 2021

Drawing No.

**HWD
0882c**

Saving Lives through Innovation and Education