

UL/cUL SYSTEM NO. HW-D-0883

TOP OF WALL JOINT : GYPSUM SHAFT WALL ASSEMBLY

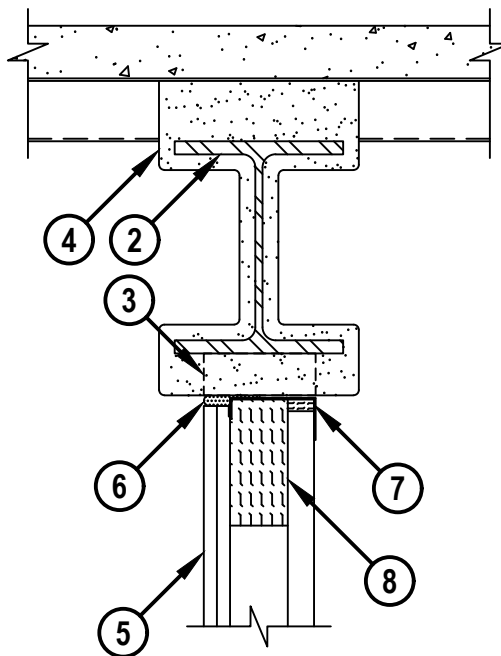
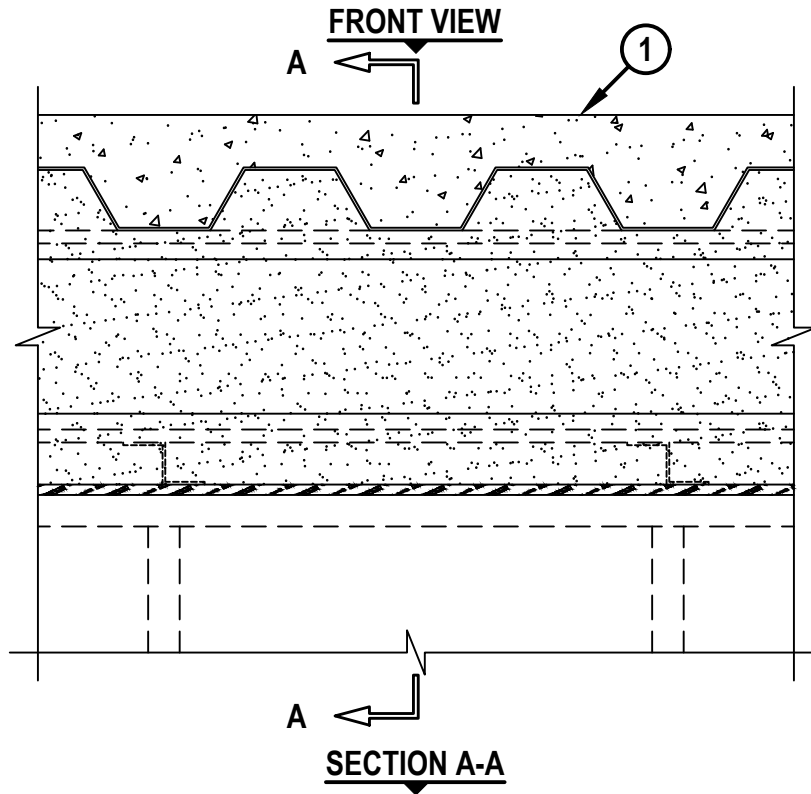
ASSEMBLY RATING = 1-HR. OR 2-HR.

CLASS II OR III MOVEMENT CAPABILITIES - 50% COMPRESSION OR EXTENSION

L-RATING AT AMBIENT = LESS THAN 1 CFM / LIN FT

L-RATING AT 400°F = LESS THAN 1 CFM / LIN FT

HW-D-0883b-032823



HILTI, Inc.
Plano, Texas USA (800) 879-8000

Sheet	1 of 2
Scale	7/64" = 1"
Date	Mar. 28, 2023

Drawing No.
**HWD
0883b**

Saving Lives through Innovation and Education

UL/cUL SYSTEM NO. HW-D-0883

TOP OF WALL JOINT : GYPSUM SHAFT WALL ASSEMBLY

ASSEMBLY RATING = 1-HR. OR 2-HR.

CLASS II OR III MOVEMENT CAPABILITIES - 50% COMPRESSION OR EXTENSION

L-RATING AT AMBIENT = LESS THAN 1 CFM / LIN FT

L-RATING AT 400°F = LESS THAN 1 CFM / LIN FT

HWD0883b.032823

1. LIGHTWEIGHT OR NORMAL WEIGHT CONCRETE FLOOR (MINIMUM 2-1/2" THICK) OVER METAL DECKING ASSEMBLY (UL/cUL CLASSIFIED) (1-HR. OR 2-HR. FIRE-RATING).
2. STEEL BEAM ORIENTED PARALLEL TO WALL ASSEMBLY.
3. Z-SHAPED CLIPS (MIN. 20 GA.) SIZED TO EXTEND THROUGH THE THICKNESS OF FIREPROOFING ON THE BOTTOM FLANGE OF BEAM WITH 2" LONG UPPER AND LOWER LEGS. SUPPORT CLIPS FASTENED TO BEAM AT MAXIMUM 24" OC.
4. UL CLASSIFIED MONOKOTE TYPES MK-6/HY OR MK-10/HB (MANUFACTURED BY W.R. GRACE) OR TYPE 300 (MANUFACTURED BY ISOLATEK, INT.) FIREPROOFING SPRAYED TO THE THICKNESS SPECIFIED IN THE INDIVIDUAL D900 SERIES DESIGN (SEE NOTE NO. 2 BELOW).
5. GYPSUM SHAFT WALL ASSEMBLY (UL/cUL CLASSIFIED U400 OR V400 SERIES) (1-HR. OR 2-HR. FIRE-RATING) (2-HR. SHOWN) TO INCLUDE THE FOLLOWING CONSTRUCTION FEATURES :
 - A. "J" SHAPED CEILING RUNNER, MINIMUM 4" WIDE WITH LEGS OF 1" AND 2" (MINIMUM 20 GA.) FASTENED TO UNDERSIDE OF DECK OR FLOOR WITH STEEL FASTENERS OR ANCHORS SPACED MAXIMUM 24" O.C.
 - B. "C-H" OR "C-T" SHAPED STUDS (MINIMUM 4" WIDE, MINIMUM 20 GA.) CUT 1/2" LESS IN LENGTH THAN ASSEMBLY HEIGHT, NESTING IN CEILING RUNNER.
 - C. NOMINAL 1" THICK GYPSUM LINER PANEL CUT 3/4" LESS IN LENGTH THAN FLOOR TO CEILING HEIGHT. TYPE, AND SHEET ORIENTATION AS SPECIFIED IN THE INDIVIDUAL UL DESIGN.
 - D. NOMINAL 5/8" THICK "TYPE C" GYPSUM WALLBOARD APPLIED VERTICALLY OR HORIZONTALLY IN ONE OR TWO LAYERS FOR 1 OR 2 HOUR RATED WALLS RESPECTIVELY. SCREW ATTACHING THE GYPSUM BOARD TO THE STUDS SHALL BE LOCATED 3-1/2" TO 5-1/2" BELOW THE BOTTOM PLANE OF THE FLOOR.
6. HILTI CFS-TTS MD OS TOP TRACK SEAL INSTALLED OVER CEILING RUNNER PRIOR TO ATTACHING TO Z-SHAPED CLIPS IN ACCORDANCE WITH THE ACCOMPANYING INSTALLATION INSTRUCTIONS.
7. MINIMUM 1-1/4" THICK HILTI CP 767 SPEED STRIP OR 1" THICKNESS MINERAL WOOL SAFING (MIN. 4 PCF DENSITY) COMPRESSED 50% TO FILL SPACE WITHIN CEILING RUNNER ABOVE GYPSUM LINER.
8. MINIMUM 6" WIDE MINERAL WOOL SAFING (MIN. 4 PCF DENSITY) COMPRESSED 33% AND BUTTED TO UNDERSIDE OF CEILING RUNNER. DEPTH OF MINERAL WOOL TO EQUAL THE WIDTH OF CEILING RUNNER.

NOTES : 1. MAXIMUM WIDTH OF JOINT = 1/2".
 2. THE TOTAL THICKNESS OF FIREPROOFING APPLIED TO EACH SIDE OF THE STEEL BEAM WEB SHALL BE MINIMUM 13/16" THICKNESS FOR 1-HR. ASSEMBLY RATING AND MINIMUM 1-3/8" THICKNESS FOR A 2-HR. ASSEMBLY RATING, WHEN USING MONOKOTE TYPE MK-6/HY OR MK-10/HB, AND MINIMUM 11/16" THICKNESS FOR A 1-HR. ASSEMBLY RATING AND MINIMUM 1-1/2" THICKNESS FOR A 2-HR. ASSEMBLY RATING WHEN USING TYPE 300.



Hilti Firestop Systems

HILTI, Inc.
Plano, Texas USA (800) 879-8000

Sheet 2 of 2

Scale -

Date Mar. 28, 2023

Drawing No.

**HWD
0883b**

Saving Lives through Innovation and Education