

UL SYSTEM NO. F-C-2508

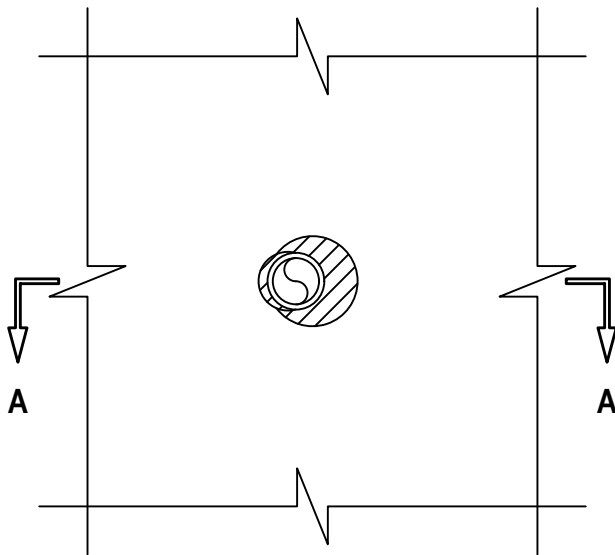
PLASTIC PIPE THROUGH WOOD FLOOR/CEILING ASSEMBLY

F-RATING = 1-HR.

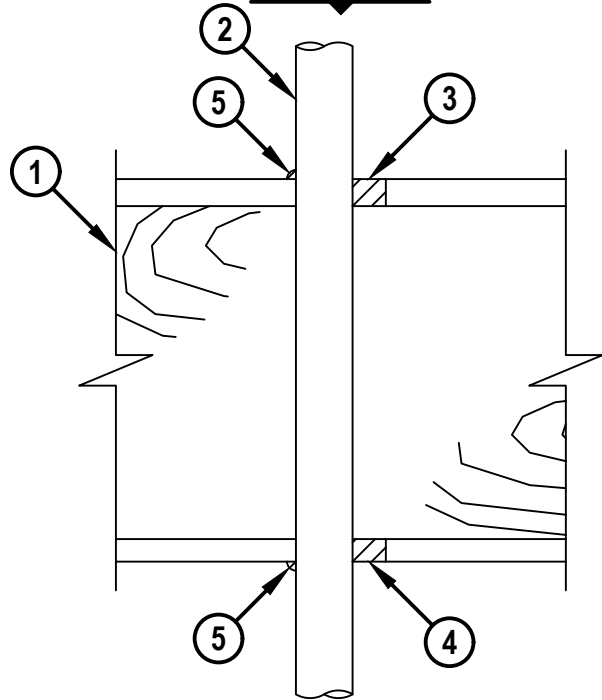
T-RATING = 1-HR.

FC2508b.082721

BOTTOM VIEW



SECTION A-A



1. WOOD FLOOR/CEILING ASSEMBLY (UL CLASSIFIED L500 SERIES) (1-HR. FIRE-RATING).
2. PENETRATING ITEM TO BE ONE OF THE FOLLOWING :
 - A. MAXIMUM 2" (63 MM OD) NOMINAL DIAMETER AQUATHERM GREENPIPE POLYPROPYLENE (PP-R) PLASTIC PIPE (SDR 7.4 OR 11) (CLOSED PIPING SYSTEM).
 - B. MAXIMUM 2" (63 MM OD) NOMINAL DIAMETER AQUATHERM BLUEPIPE POLYPROPYLENE (PP-RCT) PLASTIC PIPE (SDR 9, 11, OR 17.6) (CLOSED PIPING SYSTEM).
 - C. MAXIMUM 2" (63 MM OD) NOMINAL DIAMETER NUPI AMERICAS NIRON POLYPROPYLENE (PP-RCT) PLASTIC PIPE (SDR 7.3, 9, 11, OR 17) (CLOSED PIPING SYSTEM).
 - D. MAXIMUM 2" (63 MM OD) NOMINAL DIAMETER AQUATECHNIK NA FUSION-TECH POLYPROPYLENE (PP-RCT) PLASTIC PIPE (SDR 7.4, 11, OR 17.6) (CLOSED PIPING SYSTEM).
 - E. MAXIMUM 2" (63 MM OD) NOMINAL DIAMETER UPONOR POLYPROPYLENE (PP-RCT) PLASTIC PIPE (SDR 9 OR 11) (CLOSED PIPING SYSTEM).
3. MINIMUM 3/4" DEPTH HILTI FS-ONE MAX INTUMESCENT FIRESTOP SEALANT.
4. MINIMUM 1/2" DEPTH HILTI FS-ONE MAX INTUMESCENT FIRESTOP SEALANT.
5. MINIMUM 1/4" BEAD HILTI FS-ONE MAX INTUMESCENT FIRESTOP SEALANT APPLIED AT POINT OF CONTACT.

NOTES : 1. MAXIMUM DIAMETER OF OPENING = 3-1/2".
2. ANNULAR SPACE = MINIMUM 0", MAXIMUM 1".
3. CHASE WALL [NOT SHOWN, OPTIONAL] - THE THROUGH PENETRANT MAY BE ROUTED THROUGH A NON-RATED OR RATED GYPSUM CHASE WALL.



HILTI, Inc.
Plano, Texas USA (800) 879-8000

Sheet	1 of 1
Scale	3/16" = 1"
Date	Aug. 27, 2021

Drawing No.
**FC
2508b**

Saving Lives through Innovation and Education