

UL/cUL SYSTEM NO. HW-S-0133  
**TOP OF WALL JOINT : GYPSUM WALL ASSEMBLY**

ASSEMBLY RATING = 2-HR.

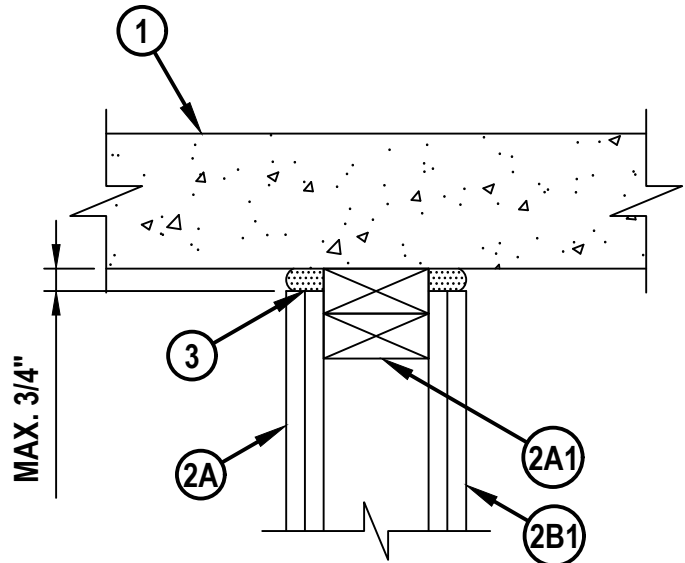
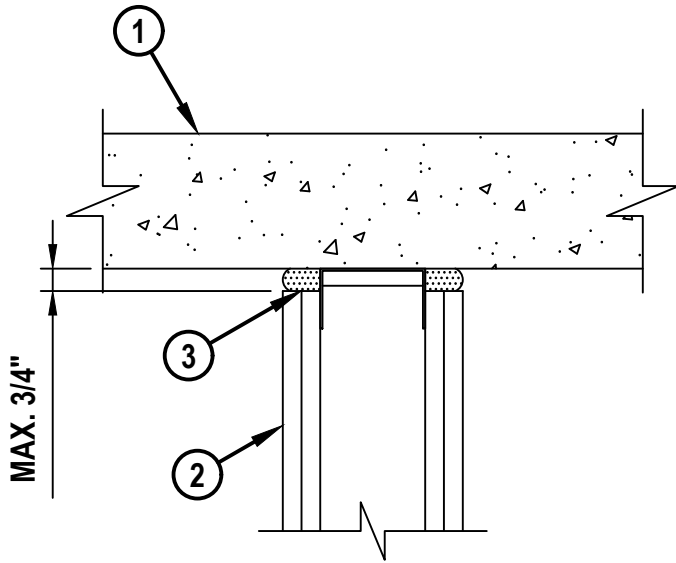
L-RATING AT AMBIENT = 1 CFM / LIN FT OR LESS

L-RATING AT 400°F = 1 CFM / LIN FT OR LESS

HWS0133b.032323

**CONFIGURATION A**

**CONFIGURATION B**



HILTI, Inc.  
 Plano, Texas USA (800) 879-8000

Sheet	1 of 2
Scale	5/32" = 1"
Date	Mar. 23, 2023

Drawing No.  
**HWS  
 0133b**

*Saving Lives through Innovation and Education*

UL/cUL SYSTEM NO. HW-S-0133

**TOP OF WALL JOINT : GYPSUM WALL ASSEMBLY**

**ASSEMBLY RATING = 2-HR.**

**L-RATING AT AMBIENT = 1 CFM / LIN FT OR LESS**

**L-RATING AT 400°F = 1 CFM / LIN FT OR LESS**

HWS0133b.032323

1. CONCRETE FLOOR ASSEMBLY. LIGHTWEIGHT OR NORMAL WEIGHT CONCRETE (MIN. 4-1/2" THICK)
2. (CONFIGURATION A) GYPSUM WALL ASSEMBLY (UL/cUL CLASSIFIED U400 SERIES) (2-HR. FIRE-RATING) TO INCLUDE THE FOLLOWING CONSTRUCTION FEATURES:
  - A. CEILING RUNNER (MIN. 25 GA., FLANGE HEIGHT OF CEILING RUNNER SHALL BE MINIMUM 1/4" GREATER THAN MAXIMUM EXTENDED JOINT WIDTH) FASTENED TO UNDERSIDE OF CONCRETE FLOOR WITH STEEL MASONRY ANCHORS (SPACED MAX. 24" OC)
  - B. STEEL STUDS (MIN. 2-1/2" WIDE) AND ATTACHED TO CEILING RUNNER WITH SHEET METAL SCREWS. STUDS SPACED A MAX 24" OC.
  - C. NOMINAL 5/8" THICK GYPSUM WALLBOARD. TYPE, NUMBER OF LAYERS, AND SHEET ORIENTATION AS REQUIRED IN THE INDIVIDUAL UL DESIGN. GYPSUM BOARD INSTALLED TO A MIN. TOTAL THICKNESS OF 1-1/4".
- 2A. (CONFIGURATION B) GYPSUM WALL ASSEMBLY (UL/cUL CLASSIFIED U300, V300 OR W300 SERIES) (2-HR. FIRE-RATING) TO INCLUDE THE FOLLOWING CONSTRUCTION FEATURES:
  - A1. WOOD PLATES AND STUDS TO CONSIST OF NOMINAL 2"X4" LUMBER (STUDS SPACED MAXIMUM 16" OC).
  - B1. NOMINAL 5/8" THICK GYPSUM WALLBOARD. TYPE, NUMBER OF LAYERS, AND SHEET ORIENTATION AS REQUIRED IN THE INDIVIDUAL UL DESIGN. GYPSUM BOARD INSTALLED TO A MIN. TOTAL THICKNESS OF 1-1/4".
3. HILTI CFS-TTS 212, CFS-TTS 358, CFS-TTS 600, CFS-TTS R OS, OR CFS-TTS OS TOP TRACK SEAL INSTALLED IN JOINT AS BACKER ROD. TOP TRACK SEAL CUT IN HALF LENGTHWISE AT DOTTED LINE OR TEAR STRIP. ON EACH SIDE OF THE WALL, ON HALF OF THE TOP TRACK SEAL IS TO BE FOLDED AND PUSHED INTO THE JOINT TO BE FRICTION FIT AND TO BE FLUSH AGAINST THE CEILING RUNNER OR TOP PLATE. BUTT JOINTS IN TOP TRACK SEAL SHALL BE COMPRESSED TOGETHER A MIN 1/4".

**NOTE : MAXIMUM WIDTH OF JOINT = 3/4".**



HILTI, Inc.  
Plano, Texas USA (800) 879-8000

Sheet	2 of 2
Scale	-
Date	Mar. 23, 2023

Drawing No.  
**HWS  
0133b**