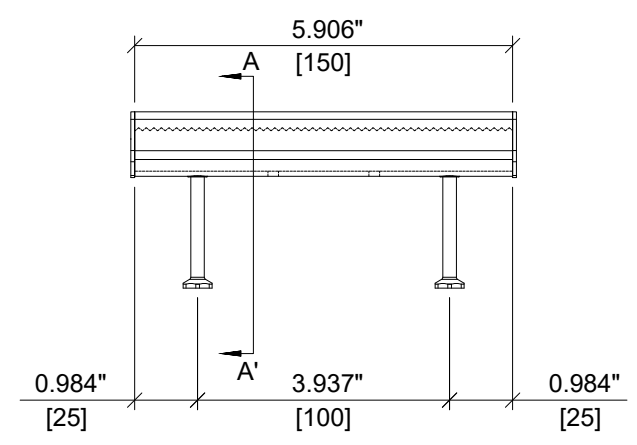
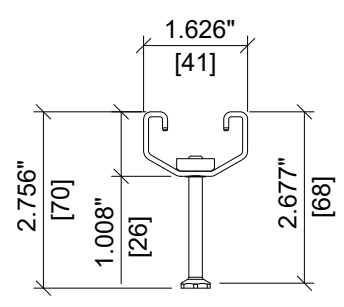


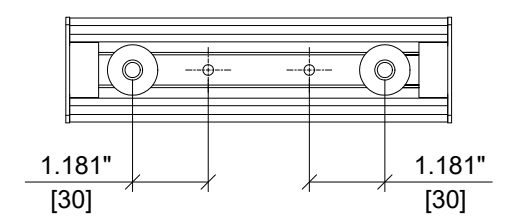
ITEM	DESCRIPTION	QUANTITY
1	CHANNEL PROFILE	1
2	RIVET CONNECTION	2
3	ROUNDED HEADED ANCHOR	2
4	END CAP	2
5	TEAR OUT BAND	1
6	FILLER FOAM	1



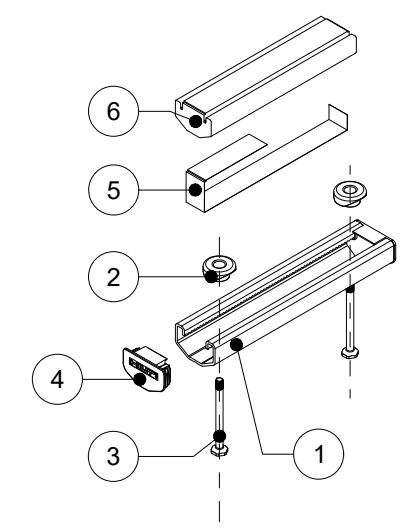
ELEVATION VIEW



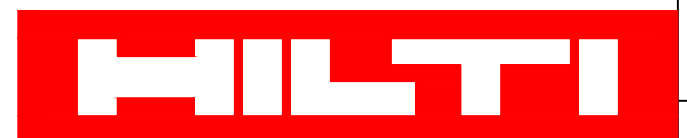
SECTION A-A'

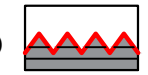


PLAN VIEW



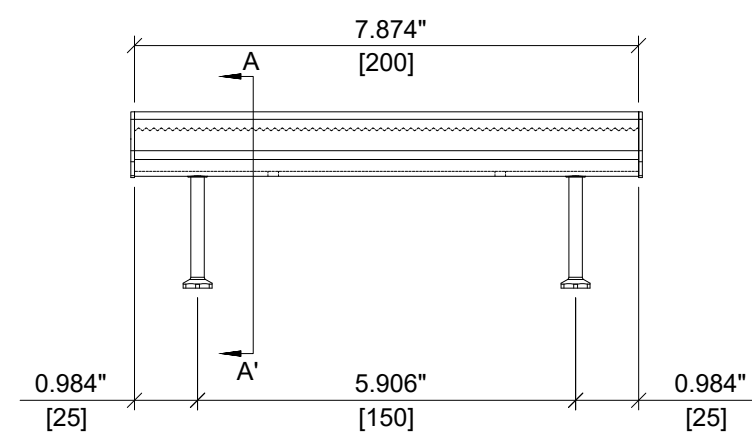
ISOMETRIC VIEW



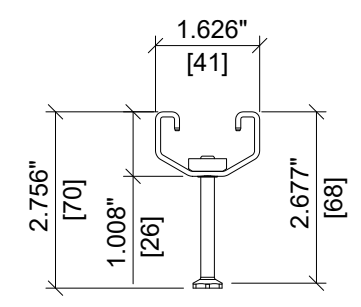
ITEM NUMBER: TBD	CHANNEL LIP: SERRATED 
ITEM DESCRIPTION: HAC-30 68-150 F	



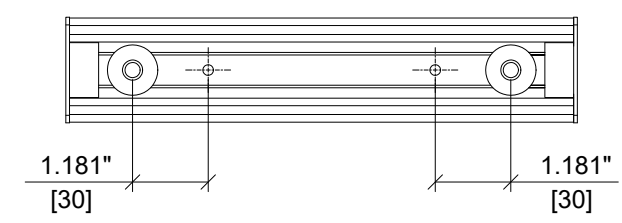
ITEM	DESCRIPTION	QUANTITY
1	CHANNEL PROFILE	1
2	RIVET CONNECTION	2
3	ROUNDED HEADED ANCHOR	2
4	END CAP	2
5	TEAR OUT BAND	1
6	FILLER FOAM	1



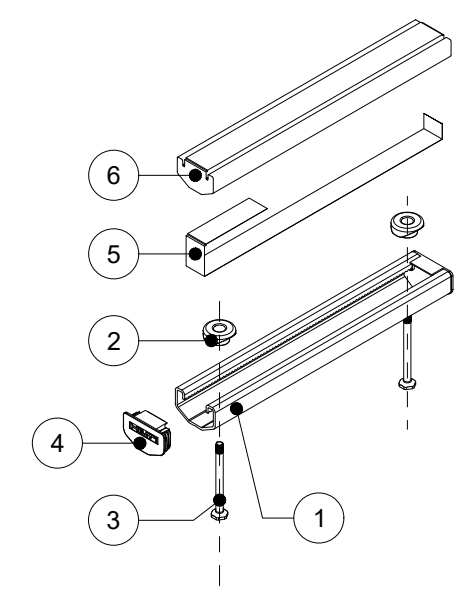
ELEVATION VIEW



SECTION A-A'

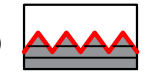


PLAN VIEW



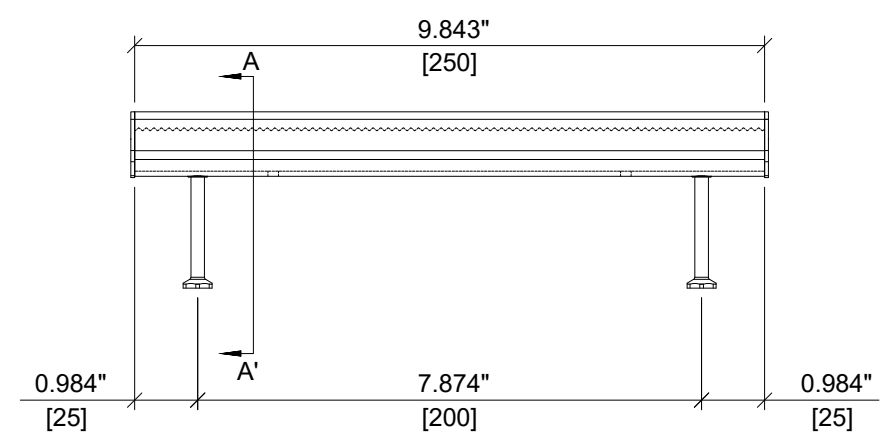
ISOMETRIC VIEW



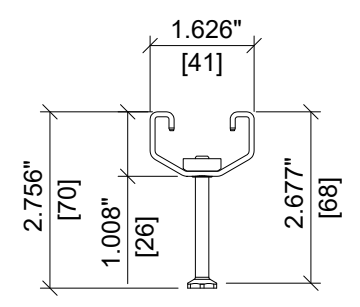
ITEM NUMBER: 431889	CHANNEL LIP: SERRATED 
ITEM DESCRIPTION: HAC-30 68-200 F	



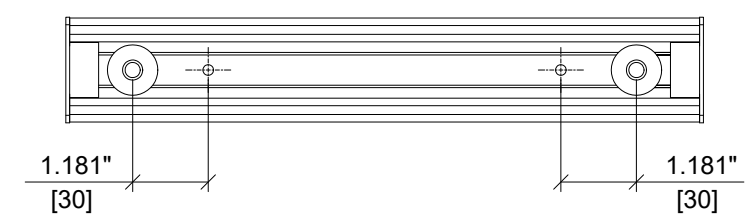
ITEM	DESCRIPTION	QUANTITY
1	CHANNEL PROFILE	1
2	RIVET CONNECTION	2
3	ROUNDED HEADED ANCHOR	2
4	END CAP	2
5	TEAR OUT BAND	1
6	FILLER FOAM	1



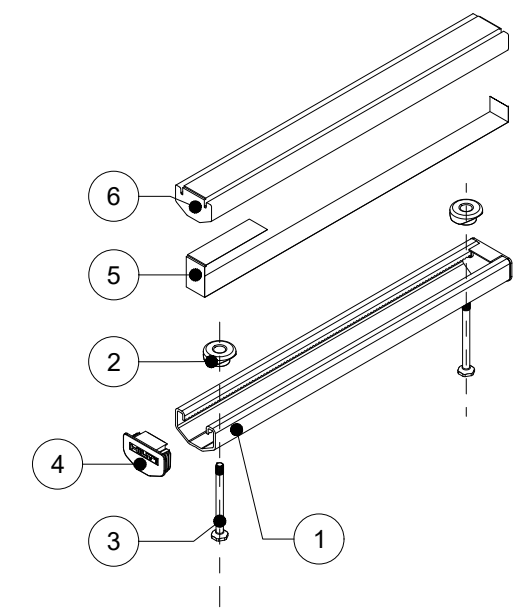
ELEVATION VIEW



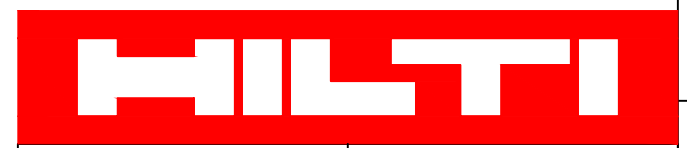
SECTION A-A'

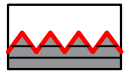


PLAN VIEW

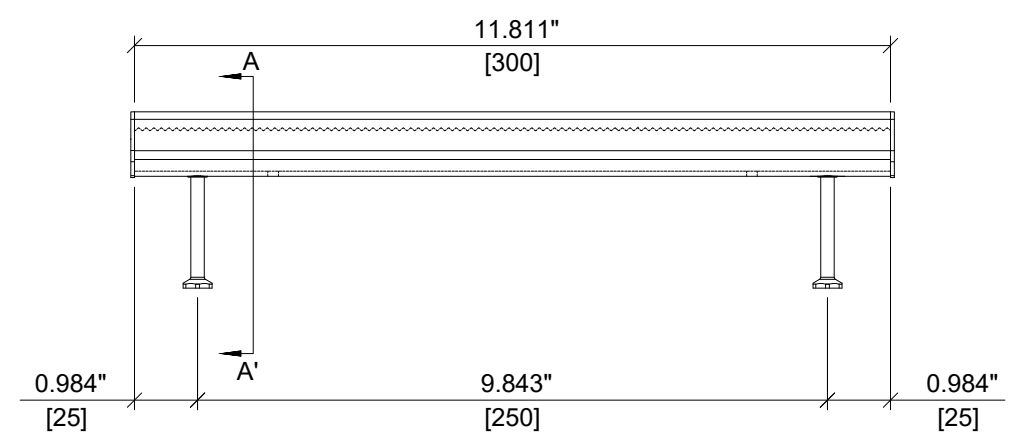


ISOMETRIC VIEW

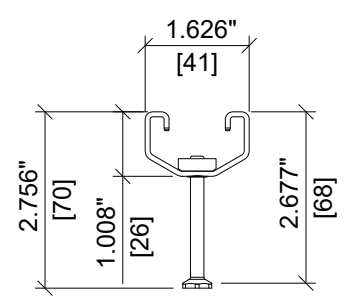


ITEM NUMBER: 431890	CHANNEL LIP: SERRATED 
ITEM DESCRIPTION: HAC-30 68-250 F	

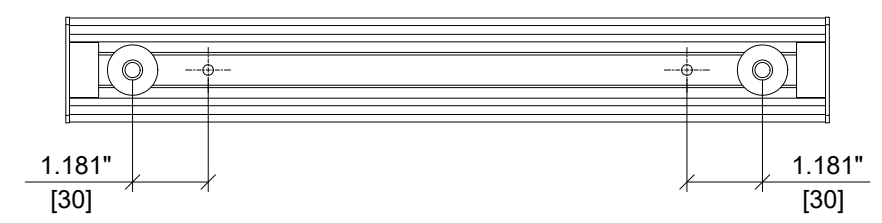
ITEM	DESCRIPTION	QUANTITY
1	CHANNEL PROFILE	1
2	RIVET CONNECTION	2
3	ROUNDED HEADED ANCHOR	2
4	END CAP	2
5	TEAR OUT BAND	1
6	FILLER FOAM	1



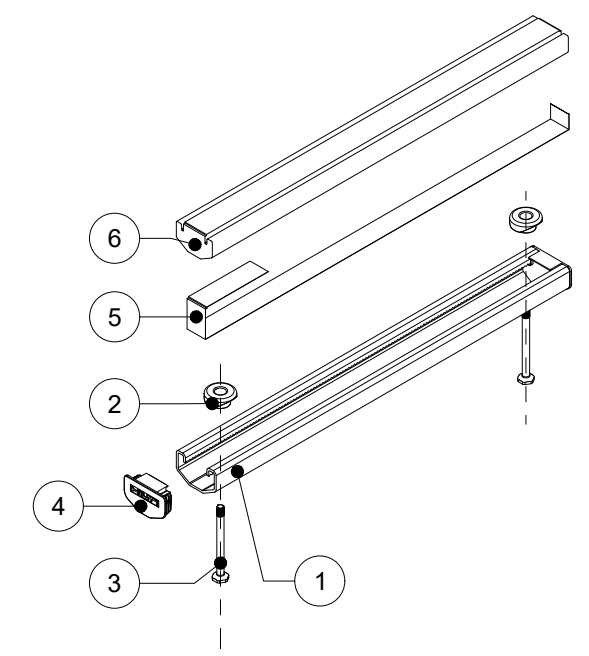
ELEVATION VIEW



SECTION A-A'

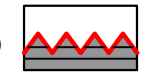


PLAN VIEW



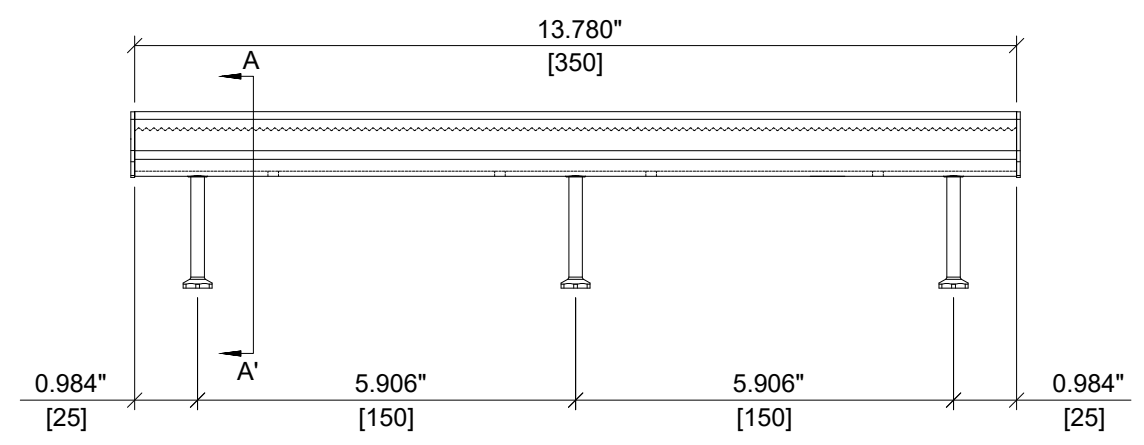
ISOMETRIC VIEW



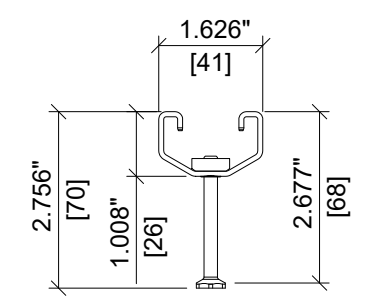
ITEM NUMBER: 431891	CHANNEL LIP: SERRATED 
ITEM DESCRIPTION: HAC-30 68-300 F	



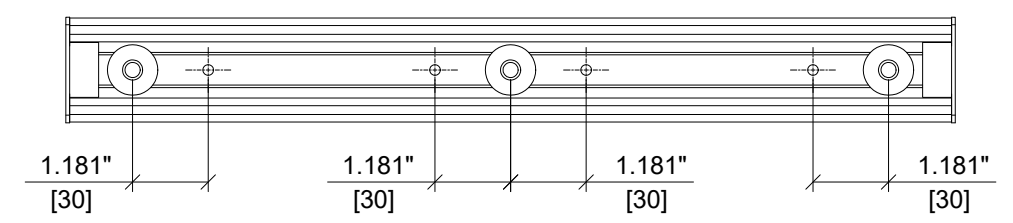
ITEM	DESCRIPTION	QUANTITY
1	CHANNEL PROFILE	1
2	RIVET CONNECTION	3
3	ROUNDED HEADED ANCHOR	3
4	END CAP	2
5	TEAR OUT BAND	1
6	FILLER FOAM	1



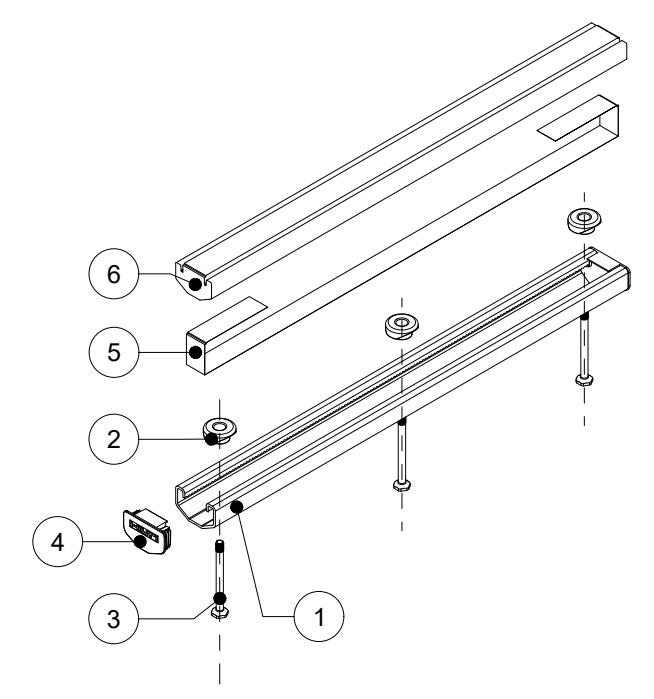
ELEVATION VIEW



SECTION A-A'



PLAN VIEW



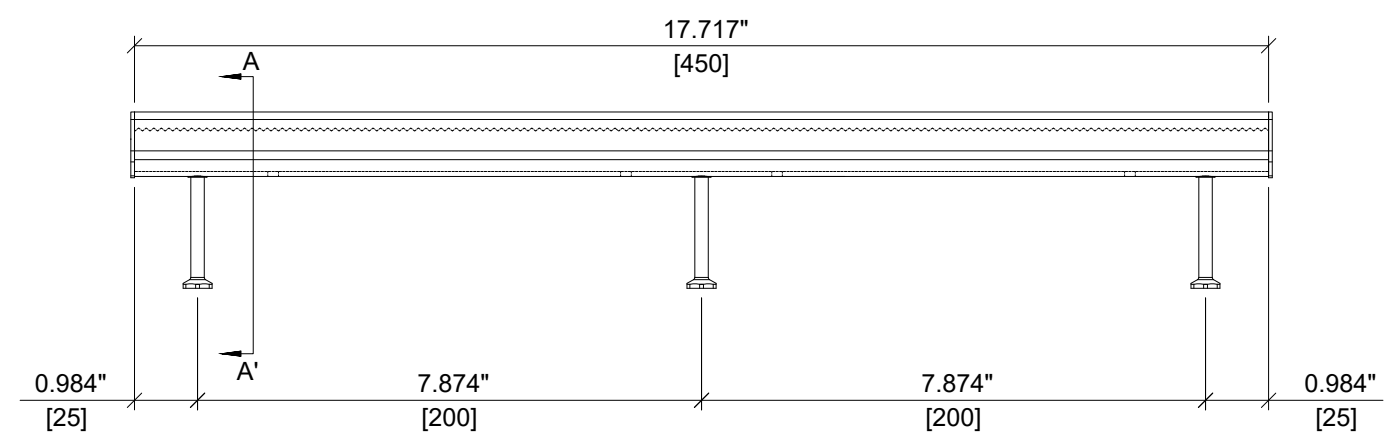
ISOMETRIC VIEW

HILTI

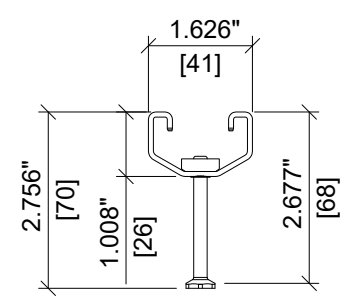
ITEM NUMBER: <div style="font-size: 24px; font-weight: bold; text-align: center;">TBD</div>	CHANNEL LIP: <div style="display: flex; align-items: center;"> <div style="font-weight: bold; margin-right: 10px;">SERRATED</div> </div>
ITEM DESCRIPTION: <div style="font-size: 18px; font-weight: bold; text-align: center;">HAC-30 68-350 F</div>	



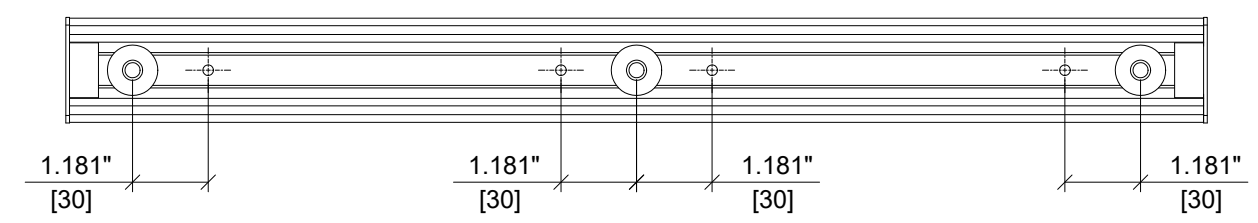
ITEM	DESCRIPTION	QUANTITY
1	CHANNEL PROFILE	1
2	RIVET CONNECTION	3
3	ROUNDED HEADED ANCHOR	3
4	END CAP	2
5	TEAR OUT BAND	1
6	FILLER FOAM	1



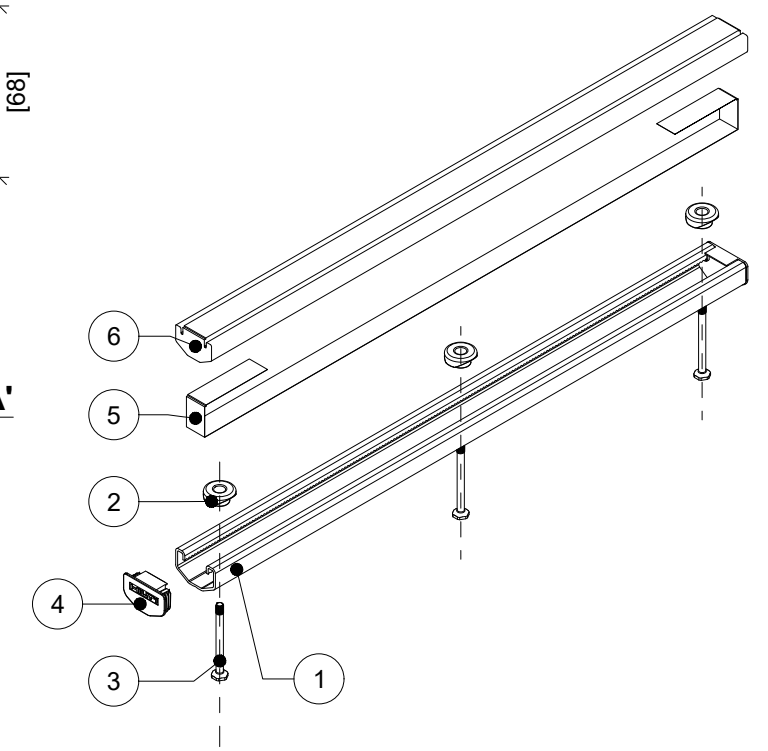
ELEVATION VIEW



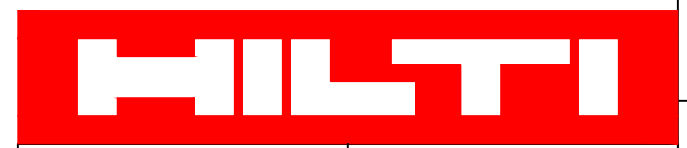
SECTION A-A'

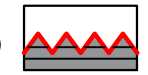


PLAN VIEW



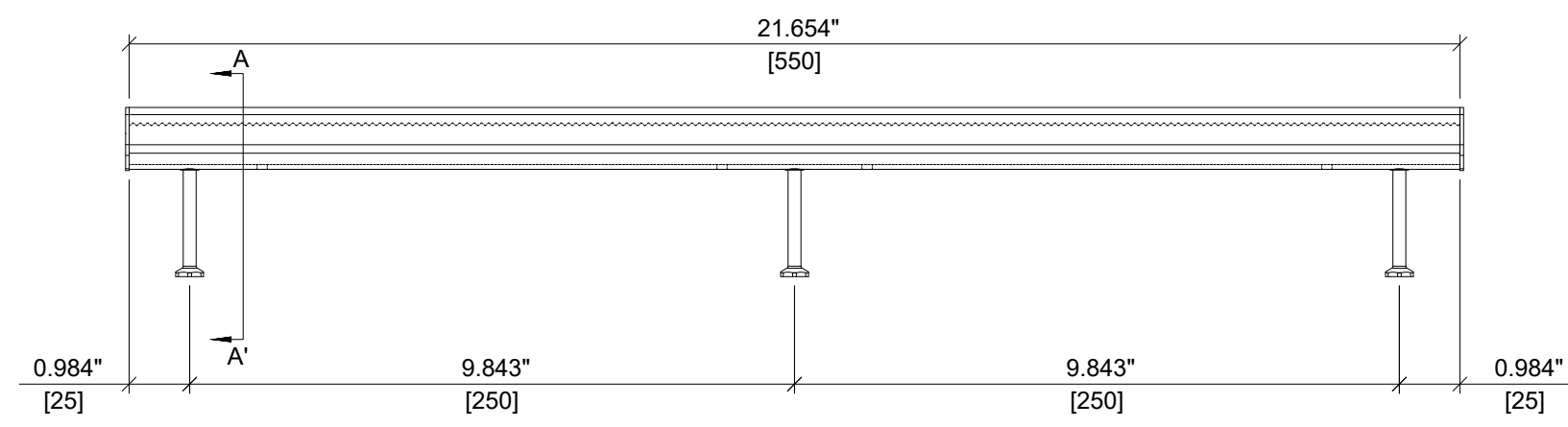
ISOMETRIC VIEW



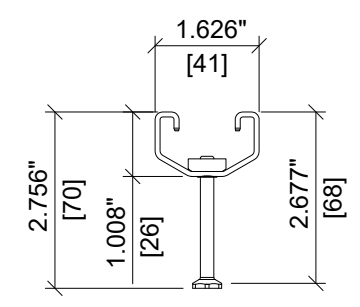
ITEM NUMBER: TBD	CHANNEL LIP: SERRATED 
ITEM DESCRIPTION: HAC-30 68-450 F	



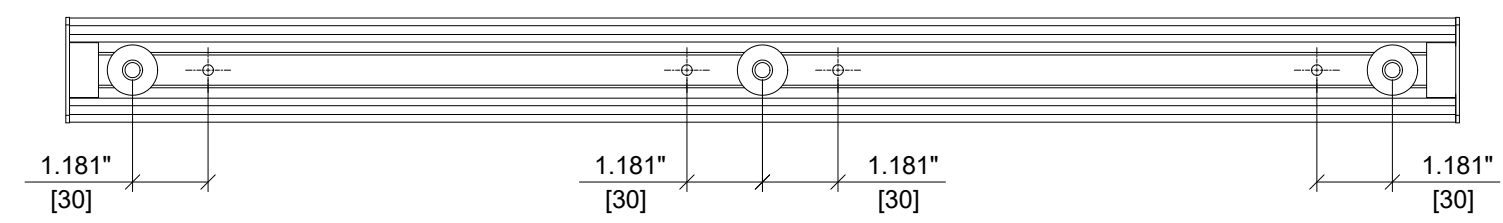
ITEM	DESCRIPTION	QUANTITY
1	CHANNEL PROFILE	1
2	RIVET CONNECTION	3
3	ROUNDED HEADED ANCHOR	3
4	END CAP	2
5	TEAR OUT BAND	1
6	FILLER FOAM	1



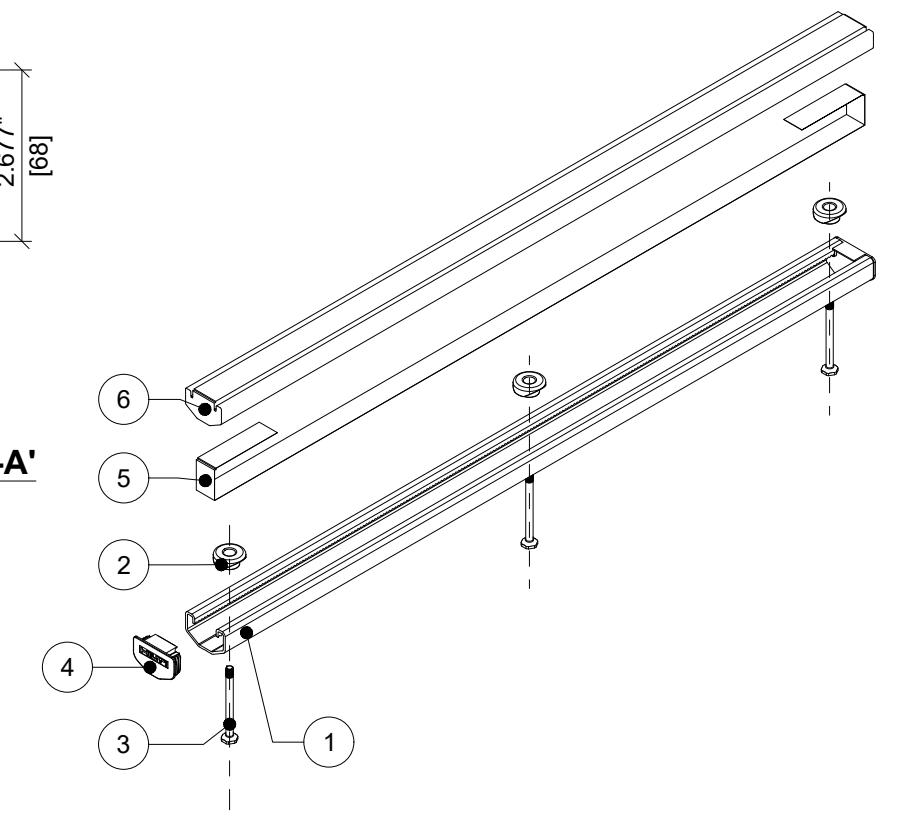
ELEVATION VIEW



SECTION A-A'

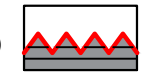


PLAN VIEW

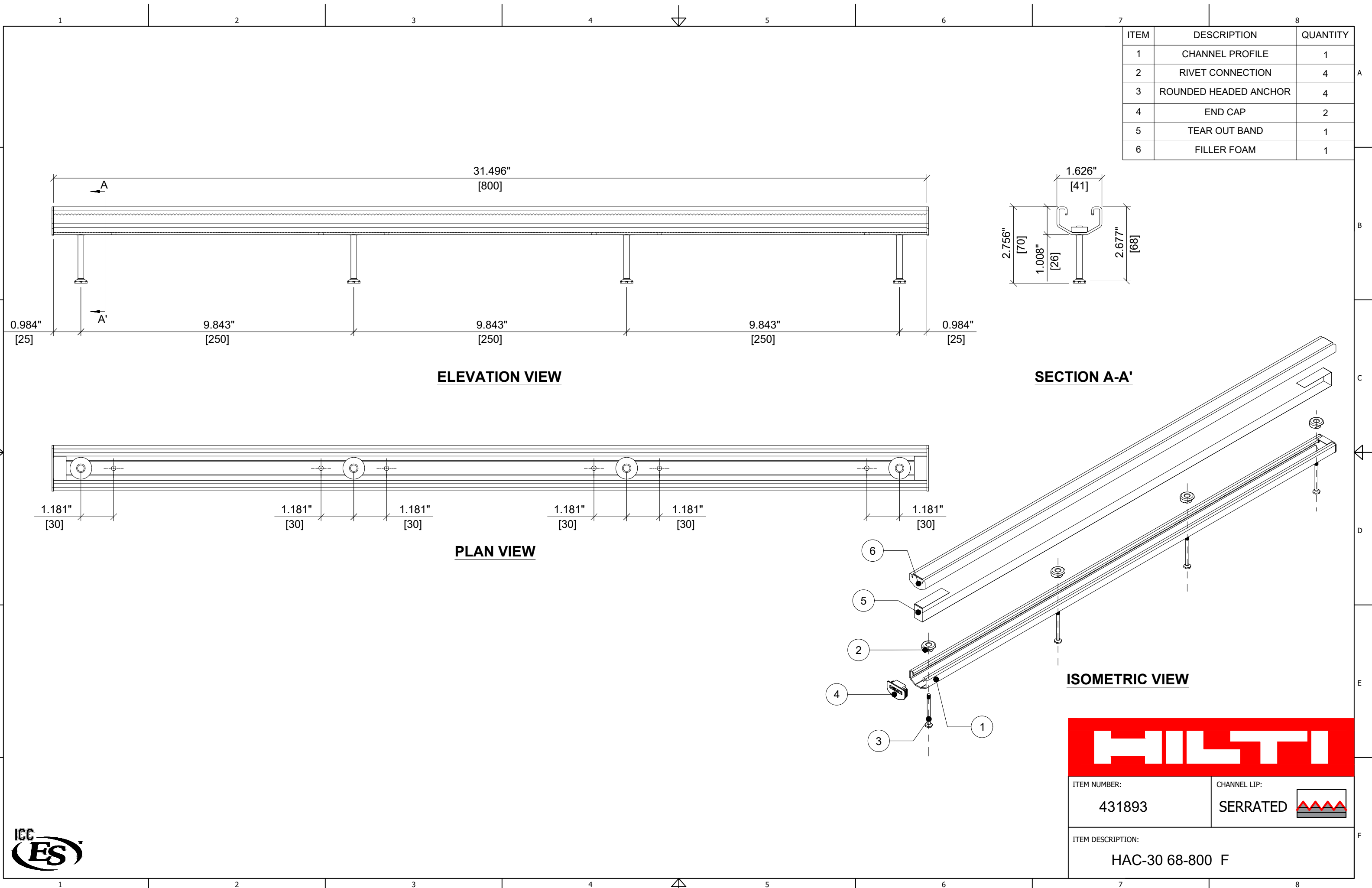


ISOMETRIC VIEW



ITEM NUMBER: 431892	CHANNEL LIP: SERRATED 
ITEM DESCRIPTION: HAC-30 68-550 F	





ITEM	DESCRIPTION	QUANTITY
1	CHANNEL PROFILE	1
2	RIVET CONNECTION	4
3	ROUNDED HEADED ANCHOR	4
4	END CAP	2
5	TEAR OUT BAND	1
6	FILLER FOAM	1

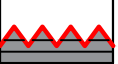
ELEVATION VIEW

SECTION A-A'

PLAN VIEW

ISOMETRIC VIEW

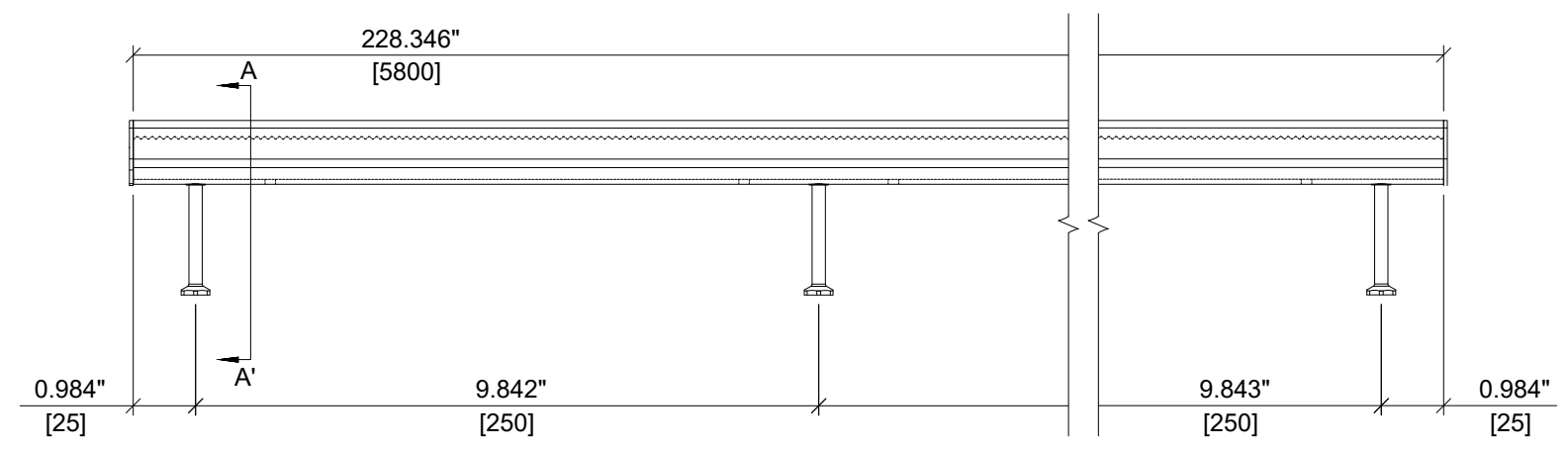


ITEM NUMBER: 431893
 CHANNEL LIP: SERRATED 

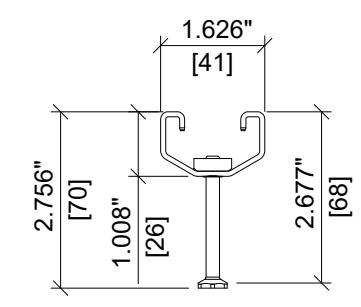
ITEM DESCRIPTION: HAC-30 68-800 F



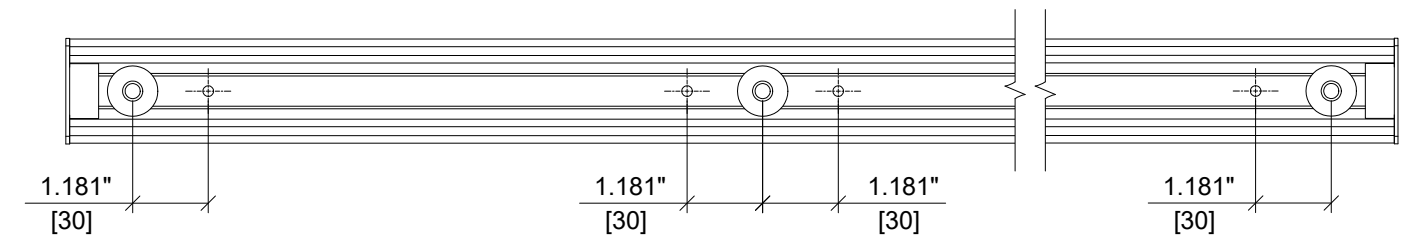
ITEM	DESCRIPTION	QUANTITY
1	CHANNEL PROFILE	1
2	RIVET CONNECTION	24
3	ROUNDED HEADED ANCHOR	24
4	END CAP	2
5	TEAR OUT BAND	1
6	FILLER FOAM	1



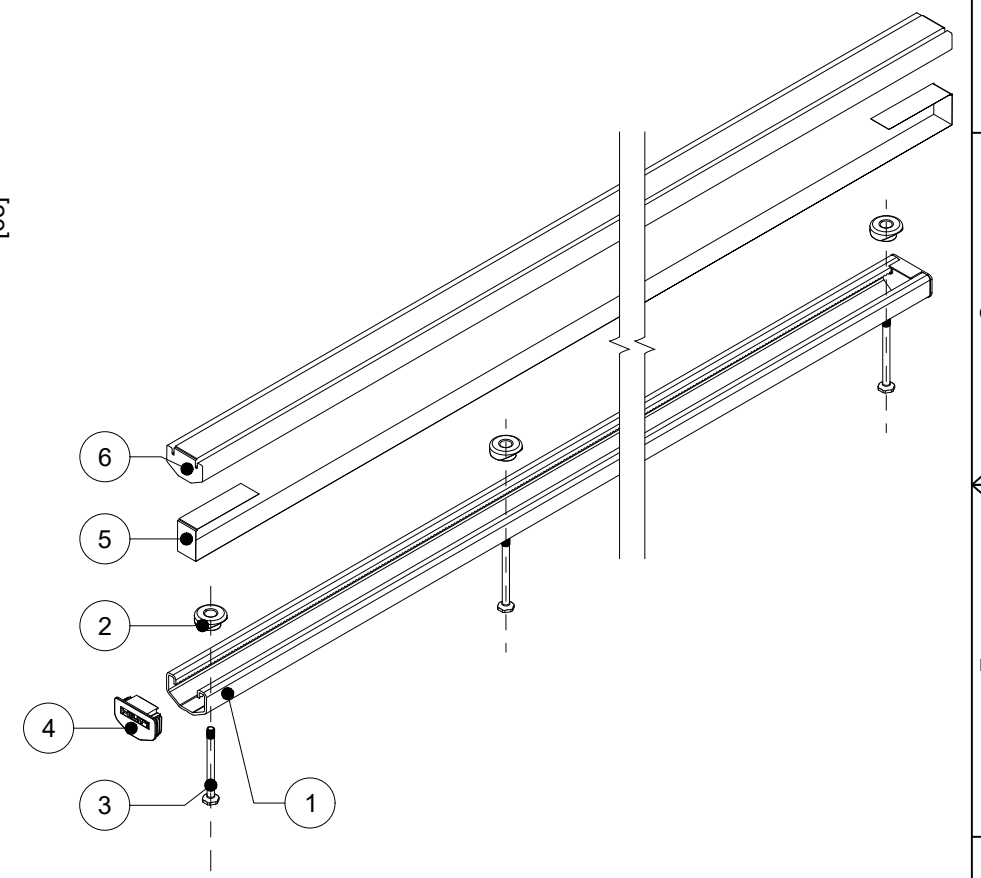
ELEVATION VIEW



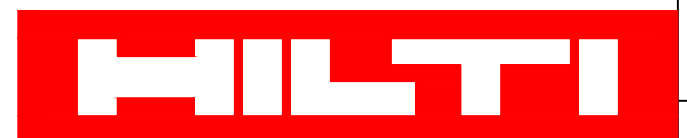
SECTION A-A'

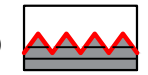


PLAN VIEW



ISOMETRIC VIEW



ITEM NUMBER: 431900	CHANNEL LIP: SERRATED 
ITEM DESCRIPTION: HAC-30 68-5800 F	

