

## Firestop Drop-In Device (CFS-DID)

### Product description

- One step firestop solution for a variety of pipe materials and diameters
- Helps reduce labor costs and increase productivity
- Ready-to-use out of box
- Internationally tested and approved by UL

### Product features

- Integrated moisture and smoke seal
- Simple, quick error free installation
- Easily identifiable to building inspectors
- All-in-one solution for renovation, retrofit, and new construction
- Buy American Compliant

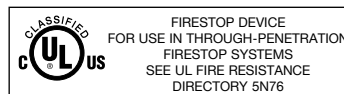
### Areas of application

- For use in concrete, hollow core, and metal deck slab thicknesses ranging from 2-1/2" to 12-1/2"
- For use in firestopping plastic, metal, and insulated pipes through cored or sleeved holes
- Installation complete with several fastening options including gas actuated fasteners, metal hit anchors, and kwik con screw anchor systems



Technical Data	CFS-DID
Expansion temperature	~ 356° F (~ 180° C)
Expansion rate	1:15 load expansion, load = 5g/cm <sup>3</sup> 1:40 free expansion
Temperature resistance	-4 up to 190° F (20 up to 88° C)
Storage temperature	23 up to 122° F (-5 up to 50° C)

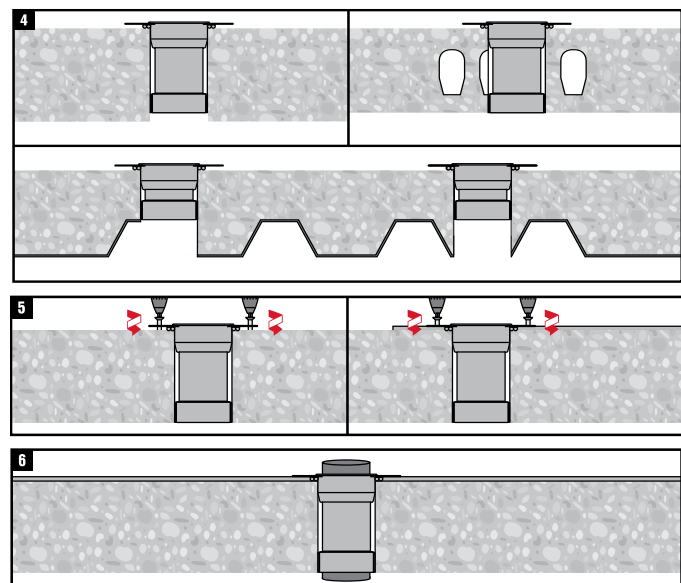
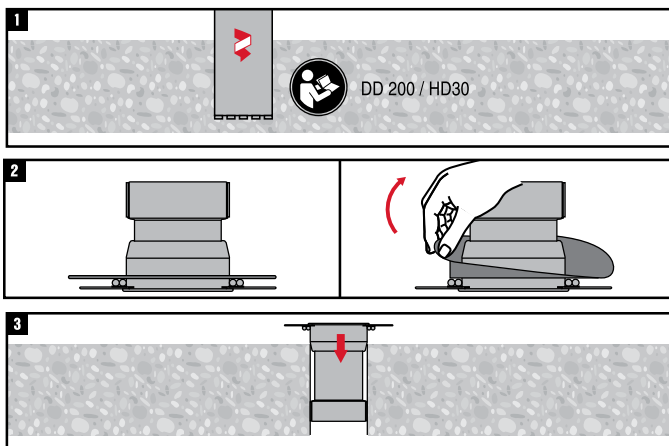
Tested in accordance with  
 • ASTM E814 • UL 1479



## Installation instructions for CFS-DID

### Notice

Always refer to the MSDS before use and the UL Fire Resistance Directory or Hilti Firestop Systems Guide for complete installation information.



**Hilti. Outperform. Outlast.**