

5.0 Installation System Hangers

MH-SLT Speed lock trapeze nut

Product Features

- Nut and washer can be installed at any position on the threaded rod, for quick and accurate trapeze building
- Electro-galvanized
- Use split nut only in conjunction with slotted washer and 1-5/8" wide strut

Material Specifications

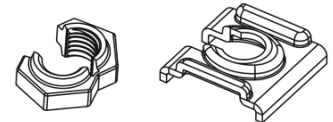
Material	Plate - Carbon Steel, DIN EN 10149-2, S460MC Nut - SAE 1010, C10C
Finish	Electro-galvanized



Note: Split Nut (A) must always be used with Slotted Washer (B). Engage by tightening to specified torque.

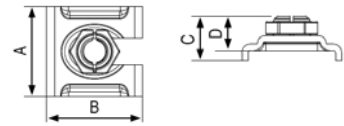
Ordering Information

Description	Designation	Torque (M _D)	Qty	Item No.
3/8" Split Nut and Slot Square Washer	MH-SLT 3/8" EG	180 in-lb / 15 ft-lb	40	2008780
1/2" Split Nut and Slot Square Washer	MH-SLT 1/2" EG	265 in-lb / 22 ft-lb	40	2008781



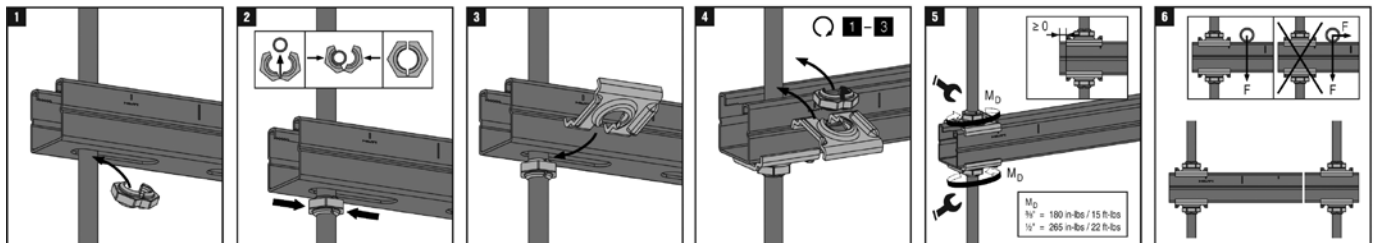
Technical Data

Description	Allow. Load (lb)	Wrench Size	Tightening Torque (ft-lb)	A Dimension (in)	B Dimension (in)	C Dimension (in)	D Dimension (in)	Plate Thickness mm / (in)
MH-SLT 3/8" EG	745	11/16"	15	1.77	1.89	0.75	0.55	3 / (1/8)
MH-SLT 1/2" EG	1350	7/8"	22	1.77	1.89	0.75	0.55	3 / (1/8)



Based on a safety factor of 3

Installation Instructions



1 Place nut at any location on threaded rod.

2 Squeeze nut onto rod

3 Insert slotted washer between nut and strut

4 Repeat steps 1-3 on top of strut

5 Tighten to specified torque value

6 MH-SLT is not intended for shear loading