

5.0 Installation System Hangers

MH-SLR-LS Speed lock riser clamp – long slotted

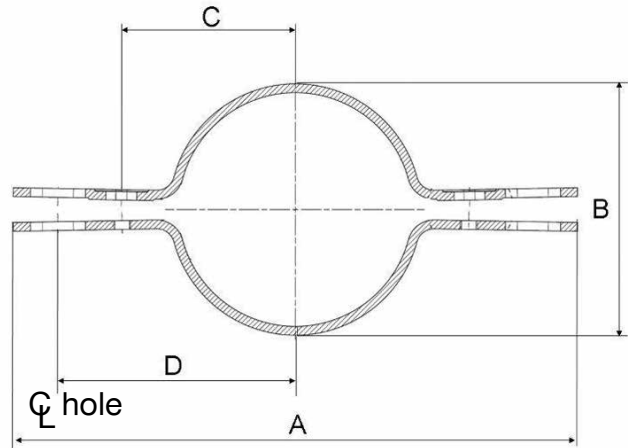
product Features

- Slotted design for easy installation; two pre-mounted bolts threads directly into clamp
- Holes allow for wall standoff applications



Material Specifications

Material	Carbon steel
Finish	Electro-galvanized bolts Pre-galvanized clamps
Conforms with	<ul style="list-style-type: none"> • Federal specifications WW-H-171E (Type 8) • Manufacturers Standardization Society MSS-SP-58 (Type 8)
Installation	Install in accordance with MSS-SP-58



Ordering Information / Technical Data

Description	Allow. Load (lb)	Bolt Diameter x Length	Wrench Size	Tightening Torque (ft-lb)	Height Dimension (in)	A Dimension (in)	B Dimension (in)	C Dimension (in)	D Dimension (in)	Material Thickness Gauge	Box Qty	Item No.
MH-SLR-LS 3" PG	530	3/8"-16 UNC x 1 1/2"	3/4	19	1-3/16	11-3/4	3-7/8	3	4-5/8	3/16	1	2016765
	530	3/8"-16 UNC x 1 1/2"	3/4	19							25	3475940
MH-SLR-LS 4" PG	810	1/2"-13 UNC x 2"	3/4	50	1-1/2	13	5	3-3/4	5-1/4	1/4	1	2016766
	810	1/2"-13 UNC x 2"	3/4	50							20	3475941
MH-SLR-LS 6" PG	1570	1/2"-13 UNC x 2"	3/4	50	2	16	7-1/8	5-8/9	6-3/4	1/4	1	2007552
	1570	1/2"-13 UNC x 2"	3/4	50							10	3475942
MH-SLR-LS 8" PG	2500	5/8"-11 UNC x 2 1/2"	15/16	75	2	18-1/4	9-3/8	6	7-7/8	3/8	1	2007553
	2500	5/8"-11 UNC x 2 1/2"	15/16	75							5	3475943
MH-SLR-LS 10" PG	2500	5/8"-11 UNC x 2 1/2"	15/16	75	2	20-5/8	11-1/2	7-3/16	9	3/8	1	2007554
	2500	5/8"-11 UNC x 2 1/2"	15/16	75							5	3475944

1 Based on a safety factor of 3 according to AISI 2007

Installation Instructions

