

5.0 INSTALLATION SYSTEM HANGERS

MH-EMTV STRUT CLAMPS — EMT TOP SCREW

Product Features

- Pre-assembled out of box
- Tightening screw on top for easy access
- Sized for EMT, rigid and flexible pipes

Material Specifications

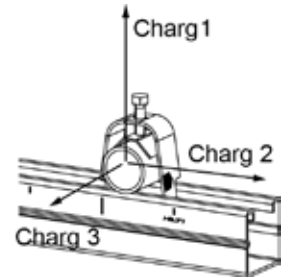
Material	Carbon steel
Finish	Pre-galvanized
Conforms with	<ul style="list-style-type: none"> • Federal specifications WW-H-171E (Type 59) • Manufacturers Standardization Society MSS-SP-58 (Type 59)

Ordering Information / Technical Data

Description	Allowable Load 1 (lb) ¹	Allowable Load 2 (lb) ¹	Allowable Load 3 (lb) ¹	Allowable Load 1 per CSA (lb) ²	Box Qty	Item No.
MH-EMTV 1/2" PG	200	50	30	65	100	2008827
MH-EMTV 3/4" PG	200	50	30	65	100	2008828
MH-EMTV 1" PG	200	75	40	100	50	2008829
MH-EMTV 1-1/4" PG	200	75	40	100	50	2008830
MH-EMTV 1-1/2" PG	200	75	40	100	50	2008831
MH-EMTV 2" PG	200	75	50	130	25	2008832
MH-EMTV 2" FLEX	200	75	50	-	25	2016764
MH-EMTV 2-1/2" PG	350	75	50	130	25	2008833
MH-EMTV 3" PG	350	75	50	175	10	2008834
MH-EMTV 4" PG	350	75	50	-	10	2008835

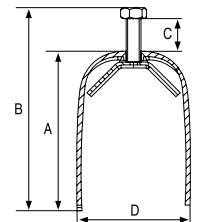
¹ Based on a safety factor of 3 for Load 1 and 2.3 for Load 2 and 3 according to AISI 2007. Allowable loads are based on loading in one direction only.

² Allowable loads per CSA C22.2 No. 18.4-15. Loading in one direction only

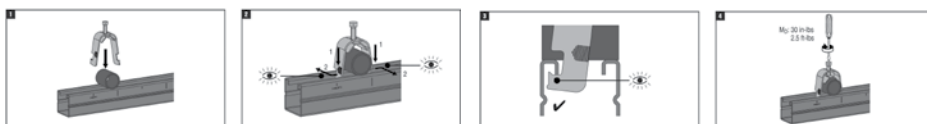


Technical Data

Designation	Bolt Diameter x Length	Wrench Size	Tightening Torque (in-lb)	Strut Clamp Material Thickness Gauge	Pipe Clamp Material Thickness Gauge	A Dimension (in)	B Dimension (in)	C Dimension (in)	D Dimension (in)
MH-EMTV 1/2" PG	1/4"-20 UNC x 7/8	3/8"	30	16	18	1.75	2.50	0.57	1.14
MH-EMTV 3/4" PG	1/4"-20 UNC x 7/8	3/8"	30	16	18	1.99	0.71	0.53	1.32
MH-EMTV 1" PG	1/4"-20 UNC x 7/8	3/8"	30	14	18	2.35	0.67	0.49	1.53
MH-EMTV 1-1/4" PG	1/4"-20 UNC x 7/8	3/8"	30	14	18	2.65	0.73	0.55	1.87
MH-EMTV 1-1/2" PG	1/4"-20 UNC x 7/8	3/8"	30	14	18	2.87	0.73	0.55	2.11
MH-EMTV 2" PG	1/4"-20 UNC x 1	3/8"	30	14	18	3.34	0.87	0.70	2.47
MH-EMTV 2" FLEX	1/4"-20 UNC x 7/8	3/8"	30	14	16	3.58	4.30	0.54	2.73
MH-EMTV 2-1/2" PG	1/4"-20 UNC x 1	3/8"	30	12	16	4.36	5.17	0.64	3.34
MH-EMTV 3" PG	1/4"-20 UNC x 1	3/8"	30	12	16	4.87	5.68	0.63	3.91
MH-EMTV 4" PG	1/4"-20 UNC x 1	3/8"	30	12	16	5.81	6.62	0.63	4.93



Installation Instructions



5.0 SYSTÈME D'INSTALLATION DES

SUSPENTES ÉTRIERS À TRAVERSES MH-EMTV — VIS DE SERRAGE SUR LE DESSUS EMT

Caractéristiques du produit

- Préassemblé hors boîte
- Vis de serrage sur le dessus pour un accès facile
- Dimensionné pour les EMT, les tuyaux rigides et flexibles

Spécifications des matériaux

Matériel	Acier au carbone
Finition	Pré-galvanisé
Satisfait à	<ul style="list-style-type: none"> • Spécifications fédérales WW-H-171E (Type 59) • Société de normalisation des fabricants MSS-SP-58 (Type 59)

Informations pour la commande / Données techniques

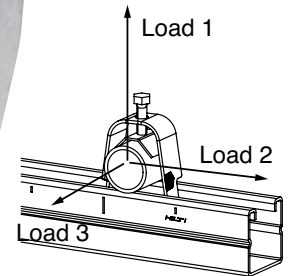
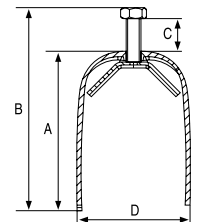
Description	Charge admissible 1 (lb) ¹	Charge admissible 2 (lb) ¹	Charge admissible 3 (lb) ¹	Charge admissible 1 per CSA (lb) ²	Boîte Quantité	No. d'article
MH-EMTV 1/2" PG	200	50	30	65	100	2008827
MH-EMTV 3/4" PG	200	50	30	65	100	2008828
MH-EMTV 1" PG	200	75	40	100	50	2008829
MH-EMTV 1-1/4" PG	200	75	40	100	50	2008830
MH-EMTV 1-1/2" PG	200	75	40	100	50	2008831
MH-EMTV 2" PG	200	75	50	130	25	2008832
MH-EMTV 2" FLEX	200	75	50	-	25	2016764
MH-EMTV 2-1/2" PG	350	75	50	130	25	2008833
MH-EMTV 3" PG	350	75	50	175	10	2008834
MH-EMTV 4" PG	350	75	50	-	10	2008835

¹ Sur la base d'un facteur de sécurité de 3 pour la charge 1 et de 2,3 pour les charges 2 et 3 selon l'ANSI 2007. Les charges admissibles sont basées sur le chargement dans une seule direction.

² Charges admissibles selon la norme CSA C22.2 n° 18.4-15. Chargement dans une seule direction

Données techniques

Désignation	Diamètre du boulon x longueur	Clé Taille	Couple de serrage (po-lb)	Épaisseur du matériau de l'étrier à traverses Calibre	Épaisseur du matériau du collier de serrage Calibre	A Dimension (po)	B Dimension (po)	C Dimension (po)	D Dimension (po)
MH-EMTV 1/2" PG	1/4"-20 UNC x 7/8	3/8"	30	16	18	1.75	2.50	0.57	1.14
MH-EMTV 3/4" PG	1/4"-20 UNC x 7/8	3/8"	30	16	18	1.99	0.71	0.53	1.32
MH-EMTV 1" PG	1/4"-20 UNC x 7/8	3/8"	30	14	18	2.35	0.67	0.49	1.53
MH-EMTV 1-1/4" PG	1/4"-20 UNC x 7/8	3/8"	30	14	18	2.65	0.73	0.55	1.87
MH-EMTV 1-1/2" PG	1/4"-20 UNC x 7/8	3/8"	30	14	18	2.87	0.73	0.55	2.11
MH-EMTV 2" PG	1/4"-20 UNC x 1	3/8"	30	14	18	3.34	0.87	0.70	2.47
MH-EMTV 2" FLEX	1/4"-20 UNC x 7/8	3/8"	30	14	16	3.58	4.30	0.54	2.73
MH-EMTV 2-1/2" PG	1/4"-20 UNC x 1	3/8"	30	12	16	4.36	5.17	0.64	3.34
MH-EMTV 3" PG	1/4"-20 UNC x 1	3/8"	30	12	16	4.87	5.68	0.63	3.91
MH-EMTV 4" PG	1/4"-20 UNC x 1	3/8"	30	12	16	5.81	6.62	0.63	4.93



Instructions d'installation

