

## 5.0 Installation System Hangers

### 5.1 Hangers and Insulating Shields

#### SLC Speed lock clevis hanger

##### Product Features

- Unique Speed Lock System means no hanger disassembly
- One piece eliminates lost/dropped nuts and bolts
- FM approved and UL, cUL listed



##### Material Specifications

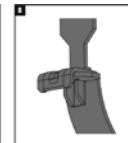
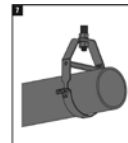
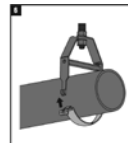
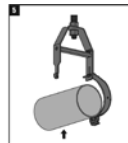
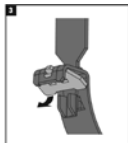
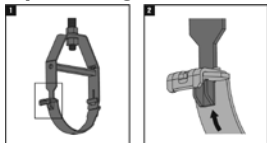
<b>Material</b>	Carbon steel
<b>Finish</b>	Electro-galvanized
<b>Approvals</b>	Factory Mutual (FM) 2" to 8"
<b>Listings</b>	Underwriters Laboratories — (UL-cUL) 2" to 8"
<b>Conforms with</b>	<ul style="list-style-type: none"> <li>• Federal specifications WW-H-171E (Type 1)</li> <li>• Manufacturers Standardization Society MSS-SP-58 (Type 1)</li> </ul>
<b>Installation</b>	Install in accordance with MSS-SP-58



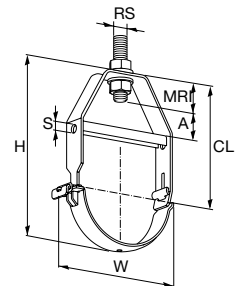
##### Ordering Information

Description	Weight/ Piece (lb)	Pipe Size	H	W	CL	RS Rod Size	MRI Min. Rod Insertion	A	S	Single Item No.	Bulk Item No.	Qty	Max Allowable Load (lb) <sup>1</sup>
<b>SLC-EG 2"</b>	0.32	2"	5"	3-9/16"	3-5/8"	3/8"	9/16"	1-5/16"	5/16"	2008782	3475949	50	610
<b>SLC-EG 2-1/2"</b>	2	2-1/2"	6"	4-5/8"	4-7/16"	1/2"	7/16"	1-3/16"	7/16"	2008783	3475950	50	1130
<b>SLC-EG 3"</b>	0.69	3"	6-7/8"	5-1/16"	4-13/16"	1/2"	3/4"	1-7/16"	7/16"	2008784	3475951	50	1130
<b>SLC-EG 4"</b>	1.06	4"	8-1/2"	6-1/8"	5-7/8"	5/8"	15/16"	1-7/16"	7/16"	2008785	3475952	20	1130
<b>SLC-EG 5"</b>	1.33	5"	9-3/4"	7-5/16"	6-9/16"	5/8"	15/16"	1-3/16"	9/16"	2008786	3475953	20	1430
<b>SLC-EG 6"</b>	2.80	6"	11-1/4"	8-15/16"	7-7/16"	3/4"	1-1/16"	1-11/16"	11/16"	2008787	3475954	10	1940
<b>SLC-EG 8"</b>	3.75	8"	13-13/16"	11-3/16"	8-15/16"	3/4"	1-3/16"	2-11/16"	11/16"	2008788	3475955	10	2000

##### Open Hanger



##### Close Hanger



<sup>1</sup> Maximum allowable loads based on the lower of:

- Maximum safe load of the threaded hanger rod at rod temperature of 650° F per Manufacturer's Standardization Society Standard Practice 58
- Allowable load for SLC-EG hanger with a safety factor of 3
- Industry standard for clevis hangers