

5.0 Installation System Hangers

5.6 Eye Couplers

Eye coupler

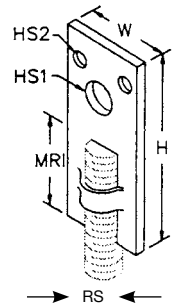
Product Features

- A structural attachment used to join hanger rod to a structure



Material Specifications

Material and finish	Pre-galvanized carbon steel
Approvals	Factory Mutual (FM)
Listings	Underwriters Laboratories (UL-cUL)



Ordering Information / Technical Data

Description	Rod Size (RS)	H	HS1	HS2	Minimum Rod Insertion (MR)	W	Max Pipe Size	Qty	Item No.	Max Allowable Load (lb) ¹
Eye Coupler 3/8"	3/8"	2-1/4"	1/2"	1/4"	1-1/8"	1-1/8"	4"	250	258317	250

¹ Capacity of eye coupler loaded axially. Based on safety factor of 3.5.

Offset Eye Coupler

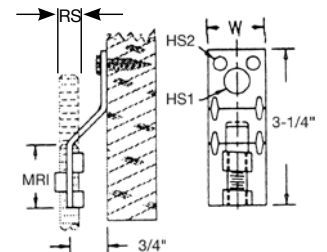
Product Features

- A structural attachment used to join hanger rod to a structure. Provides unlimited vertical rod adjustment



Material Specifications

Material and finish	Pre-galvanized carbon steel
Approvals	Factory Mutual (FM)
Listings	Underwriters Laboratories (UL-cUL)



Ordering Information / Technical Data

Description	Rod Size (RS)	H	HS1	HS2	Rod Minimum Insertion (MR)	W	Max Pipe Size	Box Qty	Item No.	Max Allowable Load (lb) ¹
Offset Eye Coupler 3/8"	3/8"	3-1/8"	1/2"	1/4"	1-3/16"	1-1/8"	4"	250	258318	250

¹ Capacity of offset eye coupler loaded axially. Based on safety factor of 3.5.