

5.0 Installation System Hangers

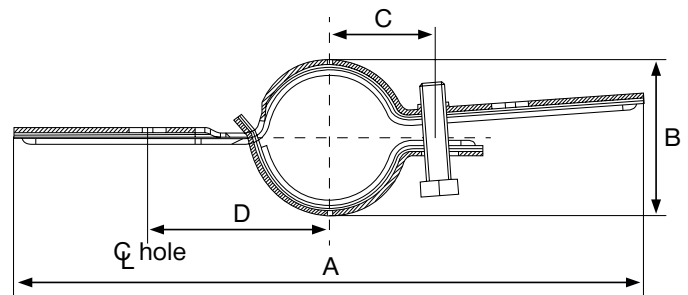
MH-SLR-S Speed lock riser clamp — short hinged

product Features

- Short design for tight spaces; single bolt threads directly into clamp
- Pre-galvanized
- Three parts means faster installation and fewer lost pieces

Material Specifications

Material	Carbon steel
Finish	Electro-galvanized bolts Pre-galvanized clamps
Conforms with	<ul style="list-style-type: none"> • Federal specifications WW-H-171E (Type 8) • Manufacturers Standardization Society MSS-SP-58 (Type 8)
Installation	Install in accordance with MSS-SP-58



Ordering Information / Technical Data

Description	Allow. Load (lb) ¹	Bolt Diameter x Length	Wrench Size	Tightening Torque (ft-lb)	Height Dimension (in)	A Dimension (in)	B Dimension (in)	C Dimension (in)	D Dimension (in)	Material Thickness Gauge	Box Qty	Item No.
MH-SLR-S 1" PG	255	3/8"-16 UNC x 1 1/2"	9/16	19	1	4.2	1.8	1.5	n.a.	14	25	2007398
MH-SLR-S 1-1/4" PG	255	3/8"-16 UNC x 1 1/2"	9/16	19	1	4.6	2.1	1.7	n.a.	14	25	2007399
MH-SLR-S 1-1/2" PG	255	3/8"-16 UNC x 1 1/2"	9/16	19	1	4.9	2.4	1.8	n.a.	14	25	2007540
MH-SLR-S 2" PG	255	3/8"-16 UNC x 1 1/2"	9/16	19	1-3/16"	5.6	3.0	2.1	n.a.	12	1	2007541
	255	3/8"-16 UNC x 1 1/2"	9/16	19							25	3475772
MH-SLR-S 2-1/2" PG	390	3/8"-16 UNC x 1 1/2"	9/16	19	1-3/16"	6.1	3.5	2.4	n.a.	12	1	2007542
	390	3/8"-16 UNC x 1 1/2"	9/16	19							25	3475933
MH-SLR-S 3" PG	530	1/2"-13 UNC x 2"	3/4	50	1-1/2"	7.4	4.2	2.9	n.a.	11	1	2007543
	530	1/2"-13 UNC x 2"	3/4	50							25	3475934
MH-SLR-S 4" PG	810	1/2"-13 UNC x 2"	3/4	50	1-1/2"	8.4	5.2	3.4	n.a.	11	1	2007544
	810	1/2"-13 UNC x 2"	3/4	50							20	3475935

¹ Based on a safety factor of 3 for all sizes except 2.3 for sizes 1" and 1-1/4" according to AISI 2007

Installation Instructions

