



# GREATER FLEXIBILITY, MORE EFFICIENCY

Productivity  
Components  
Digital Selector



# HILTI MODULAR SUPPORT SYSTEMS

## Productivity Components

Time is the most valuable asset on any jobsite.

At Hilti, our commitment to innovation extends to every corner of the jobsite, and when we set about developing ways to help drive productivity, we found the biggest opportunity in all the small steps.

Now we bring you our most impactful time and cost savings to your serial applications to help boost your bottom line.

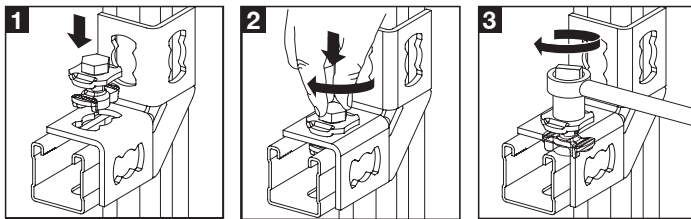
## MQN PUSHBUTTON

### Features and Applications

- Efficient: one-part fastener replaces a spring nut, bolt and washer
- Removable and reusable\*



MQN



1 Put in position.

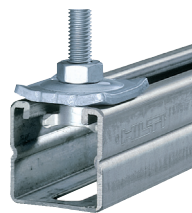
2 Press and turn.

3 Tighten using 11/16" socket.

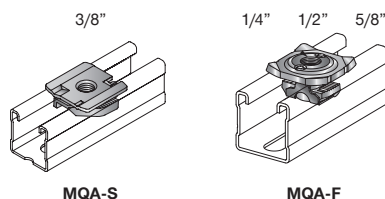
## MQA SADDLE NUT

### Features and Applications

- Efficient: one-part fastener replaces a spring nut and washer
- Removable and reusable\*
- Flexible: one MQA Saddle Nut fits all Hilti strut and now works in competitive strut too



MQA Saddle Nut



MQA-S

MQA-F

## INSTALLED COSTS SAVINGS

Use the Hilti Pushbutton System of fasteners and connectors to replace spring nuts, bolts and washers for time and labor savings

### Hilti Innovation

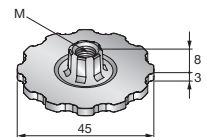
Your total installed cost savings are maximized by helping to reduce labor time using Hilti's innovative products and solutions.



## MQ-TW TRAPEZE WHEEL

### Features and Applications

- Efficient: channel washer with integrated nut and washer
- Hand install possible



\*Restrictions apply, contact Hilti for more information.

# HILTI PRODUCTIVITY COMPONENTS

## Hangers and Clamps



### Innovative Hangers and Clamps



**MH-SLC Clevis Hanger**



**MQT-U Beam Clamp**



**MH-R45  
Strut-Clamp 45° - Rigid**



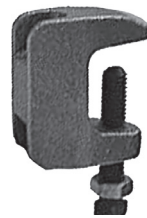
**MH-EMT45  
Strut-Clamp 45° - EMT**



**MH-EMTV  
Strut Clamp EMT Top Screw**



**BC Beam Clamp**



**BC Wide Mouth Beam Clamp**



# HILTI PRODUCTIVITY COMPONENTS

- Channel Connectors
- Strut Bases



## Channel Connectors



MQN Push Button



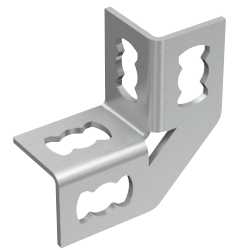
MQW-Q2



MQW-3/45



MQW-3



MQW-4

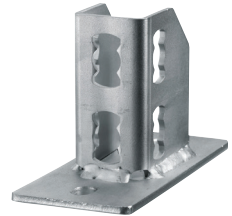
## Strut Bases



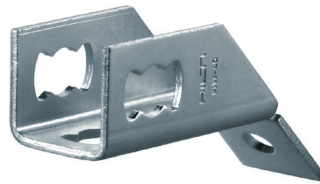
MQV-2/2 D 14



MQP-1/1



MQP-21 72

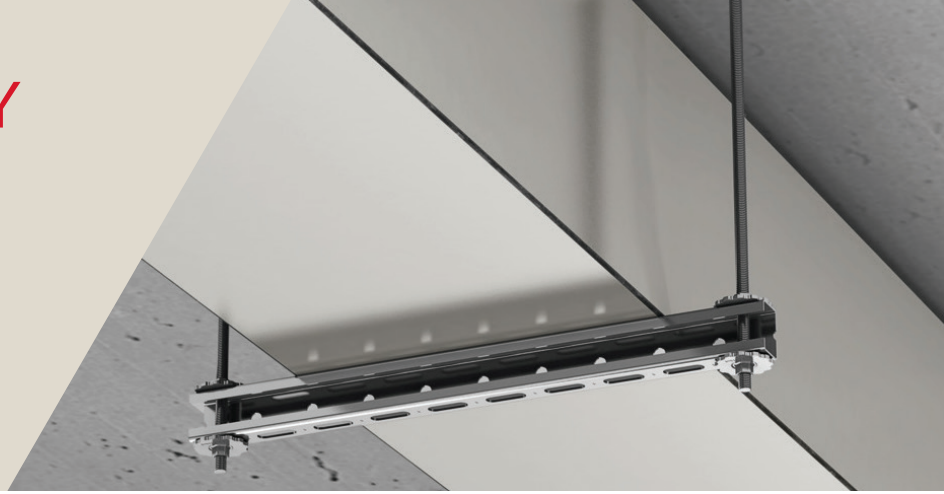


MQP-4545°



# HILTI PRODUCTIVITY COMPONENTS

- Threaded Rod Accessories
- Strut Accessories



## Threaded Rod Accessories



MQZ-TW Trapeze Wheel



MH-SLT Split Nut



Threaded Rod Coupler

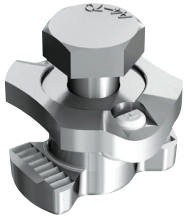


Threaded Rod Eye Coupler

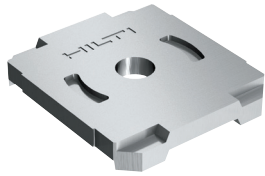


Threaded Rod Offset Eye Coupler

## Strut Accessories



MQN Push Button



MQZ-L Board Plate



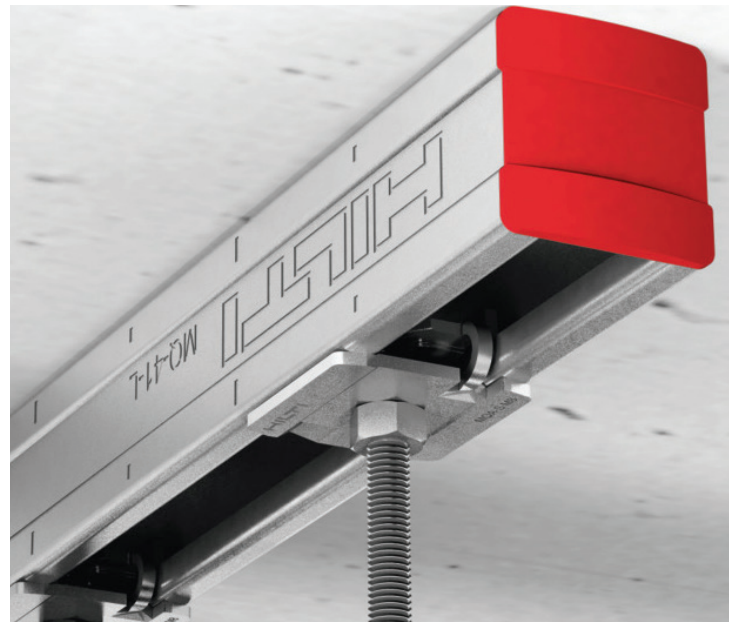
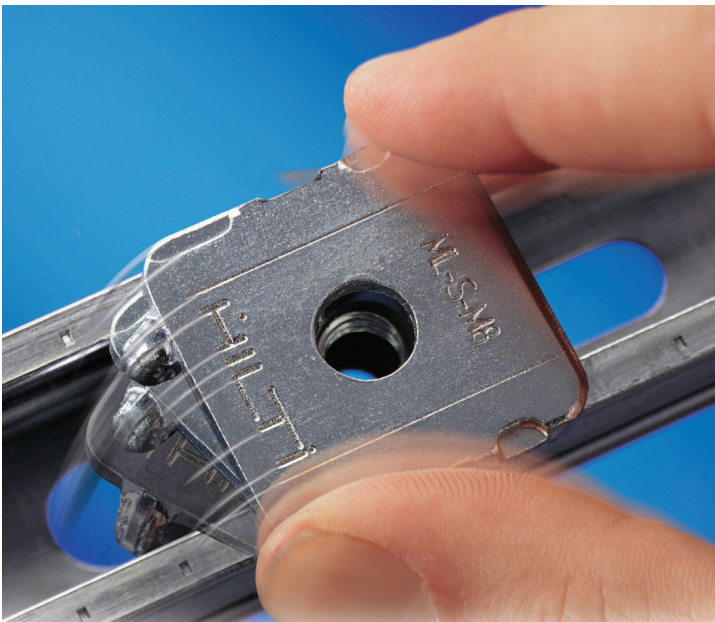
MQM Wing Nut



MQA-S Saddle Nut  
(3/8")



MQA-F Saddle Nut  
(1/2", 5/8")



# ORDER INFORMATION

Product family	Description and size	Item number	
<b>Trapeze wheel</b>	MQZ-TW 3/8"	2293068	
<b>Split Nut</b>	MH-SLT 3/8" EG Split nut/ washer	2008780	
	MH-SLT 1/2" EG Split nut/ washer	2008781	
<b>Saddle Nut</b>	MQA-S 3/8"	2293069	
	Saddle nut MQA-F1/4"	377884	
	Saddle nut MQA-F1/2"	377886	
	Saddle nut MQA-F5/8"	377887	
<b>EMT Strut Clamp</b>	MH-EMT 45 1/2"	2008821	
	MH-EMT 45 3/4"	2008822	
	MH-EMT 45 1"	2008823	
	MH-EMT 45 1-1/4"	2008824	
	MH-EMT 45 1-1/2"	2008825	
	MH-EMT 45 2"	2008826	
	Strut clamp SC TOP-EMT 1/2"	2008827	
	Strut clamp SC TOP-EMT 3/4"	2008828	
	Strut clamp SC TOP-EMT 1"	2008829	
	Strut clamp SC TOP-EMT 1-1/4"	2008830	
	Strut clamp SC TOP-EMT 1-1/2"	2008831	
	Strut clamp SC TOP-EMT 2"	2008832	
	Strut clamp SC TOP-EMT 2-1/2"	2008833	
	Strut clamp SC TOP-EMT 3"	2008834	
	Strut clamp SC TOP-EMT 4"	2008835	
	Strut clamp SC TOP/EMT 2" Flexcon	2016764	
	<b>Speed Lock Clevis Hanger</b>	Speed lock clevis hanger SLC-EG 2"	2008782
		Speed lock clevis hanger SLC-EG 2 1/2"	2008783
Speed lock clevis hanger SLC-EG 3"		2008784	
Speed lock clevis hanger SLC-EG 4"		2008785	
Speed lock clevis hanger SLC-EG 5"		2008786	
Speed lock clevis hanger SLC-EG 6"		2008787	
Speed lock clevis hanger SLC-EG 8"		2008788	
<b>Riser Clamp</b>		Slotted riser clamp 6"	2007552
	Slotted riser clamp 8"	2007553	
	Slotted riser clamp 3"	2016765	
	Slotted riser clamp 4"	2016766	
<b>Pipe Strut Clamp</b>	Strut clamp SC 45-Rigid 1/2"	2008810	
	Strut clamp SC 45 Rigid 3/4"	2008811	
	Strut clamp SC 45 Rigid 1"	2008812	
	Strut clamp SC 45 Rigid 1-1/4"	2008813	
	Strut clamp SC 45 Rigid 1-1/2"	2008814	
	Strut clamp SC 45 Rigid 2"	2008815	
	Strut clamp SC 45 Rigid 2-1/2"	2008816	
	Strut clamp SC 45 Rigid 3"	2008817	
	Strut clamp SC 45 Rigid 4"	2008818	
	Strut clamp SC 45 Rigid 8"	2008820	

Product family	Description and size	Item number
<b>Rod Coupler</b>	1/4" Rod coupler zinc	411746
	3/8" Rod coupler zinc	411747
	1/2" Rod coupler zinc 50/box	411748
	5/8" Rod coupler zinc	411749
	3/4" Rod coupler zinc	411750
<b>Strut Beam Clamp</b>	MQT-U	2301108
<b>Threaded Rod Beam Clamp</b>	BC 3/8" 100/box	257366
	BC 1/2" 50/box	257367
	BC 5/8" 50/box	257368
	BC 3/4" 50/box	257369
	BC 1/4" EG 100/box	258002
	BC-EG 3/8" 100/box	306600
	BC-EG 1/2" 50/box	306601
	Wide mouth BC 3/8" 50/box	306602
	Wide mouth BC 1/2" 50/box	306603
	Eye coupling 3/8" 250/box	258317
	Offset eye coupling 3/8" 250/box	258318
<b>Wing Nut</b>	Wing nut MQM-F1/4"	2083887
	Wing nut MQM-F3/8"	2083888
	Wing nut MQM-F1/2"	377883
<b>Square Washer</b>	Base plate MQZ-L3/8"	370632
	Base plate MQZ-L1/2"	370633
	Base plate MQZ-L5/8"	370634
<b>MQNs</b>	Channel connector MQN-2	2302707
	2-Hole angle MQW Q2	369655
	Base MQV-2/2 D 14	369639
	Base MQP-1/1	369646
<b>MQN Connectors</b>	Base MQP-45	369649
	Base MQP-21 72	369651
	3-Hole angle MQW 3	369656
	3-Hole angle MQW 3/45	369657
	4-Hole angle MQW 4	369658
<b>Cantilever Strut</b>	MQK-L 21/300	2141925
	MQK-L 21/450	2141926



**In the US:**

Hilti, Inc.  
7250 Dallas Parkway, Suite 1000, Plano, TX 75024  
Customer Service: 1-800-879-8000  
en español: 1-800-879-5000  
Fax: 1-800-879-7000

[www.hilti.com](http://www.hilti.com)

**In Canada:**

Hilti (Canada) Corporation  
2360 Meadowpine Blvd.  
Mississauga, Ontario, L5N 6S2  
Customer Service: 1-800-363-4458  
Fax: 1-800-363-4459

[www.hilti.ca](http://www.hilti.ca)

Hilti is an equal opportunity employer.  
©Copyright 2021 by Hilti, Inc. (U.S.)  
05/21 • DBS

The data contained in this literature was current as of the date of publication. Updates and changes may be made based on later testing. If verification is needed that data is still current, please contact Hilti at the numbers listed above. All published load values contained in this literature represent the results of testing by Hilti or test organizations. Local base materials were used. Because of variations in materials, on-site testing is necessary to determine performance at any specific site.



\*14001 US only