

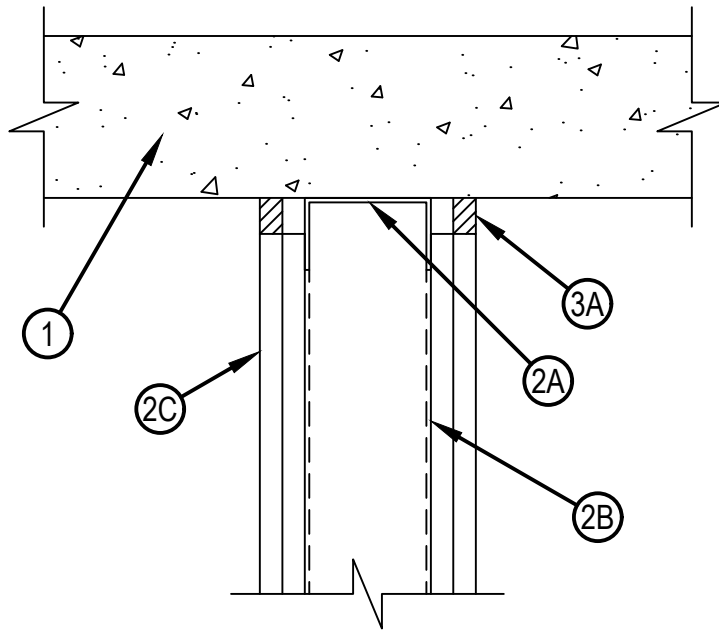


Classified by
Underwriters Laboratories, Inc.
to UL 2079 and CAN/ULC-S115

System No. HW-D-0931

HWD 0931

ANSI/UL2079	CAN/ULC S115
Assembly Ratings — 1 and 2 Hr (See Item 2)	F Ratings — 1 and 2 Hr (See Item 2)
Nominal Joint Width - 1 In.	FT Ratings — 1 and 2 Hr (See Item 2)
Class II Movement Capabilities — 18.75% Compression or Extension	FH Ratings — 1 and 2 Hr (See Item 2)
L Rating At Ambient — Less Than 1 CFM/lin ft	FTH Ratings — 1 and 2 Hr (See Item 2)
L Rating At 400 F — Less Than 1 CFM/lin ft	Nominal Joint Width - 1 In.
	Class II Movement Capabilities — 18.75% Compression or Extension
	L Rating At Ambient — Less Than 1.55 L/s/lin m
	L Rating At 400 F — Less Than 1.55 L/s/lin m



Reproduced by HILTI, Inc. Courtesy of
Underwriters Laboratories, Inc.
May 05, 2021

System No. HW-D-0931

HW-D-0931

1. Floor Assembly —Min 4-1/2 in. (114 mm) thick reinforced lightweight or normal weight (100-150 pcf or 1600-2400 kg/m³) structural concrete. Floor may also be constructed of any 6 in. (152 mm) thick UL Classified hollow-core Precast Concrete Units*. See Precast Concrete Units category in the Fire Resistance Directory for names of manufactures.
2. Wall Assembly —The 1 or 2 h fire rated gypsum board/steel stud wall assembly shall be constructed of the materials and in the manner specified in the individual U400, V400 or W400 Series Wall and Partition Design in the UL Fire Resistance Directory and shall include the following construction features:
 - A. Steel Floor and Ceiling Runners —Floor and ceiling runners of wall assembly shall consist of min No. 25 gauge galv steel channels sized to accommodate steel studs (Item 2B). Flange height of ceiling runner shall be min 1/4 in. (6 mm) greater than max extended joint width. Ceiling runner secured with masonry anchors or steel fasteners spaced 24 in. (610 mm) OC.
 - B. Studs —Steel studs to be min 3-1/2 in. (89 mm) wide. Studs cut 1/2 to 3/4 in. (13 to 19 mm) less in length than assembly height with bottom nesting in and resting on floor runner and with top nesting in ceiling runner without attachment. Stud spacing not to exceed 24 in. (610 mm) OC.
 - C. Gypsum Board* —For 1 hr assembly, one layer of min 1/2 in. (13 mm) thick Type C gypsum board is required in the individual Wall and Partition Design. For 2 hr assembly, two layers of min 1/2 in. (13 mm) thick Type C gypsum board is required in the individual Wall and Partition Design. Wall to be constructed as specified in the individual U400 or V400 Series Design in the UL Fire Resistance Directory, except that a max 1 in. (25 mm) gap shall be maintained between the top of gypsum board and bottom of concrete floor. The screws attaching the gypsum board to the studs at the top of the first layer shall be located 4 in. (102 mm) below the floor. The screws attaching the second layer to the steel studs shall be installed into the studs 3-1/2 in. (89 mm) below the floor.

The hourly fire rating of the joint system is equal to the hourly rating of the wall.
3. Joint System — Max separation between bottom of floor and top of gypsum board at time of installation of joint system is 1 in. (25 mm). The joint system is designed to accommodate a max 18.75 percent compression or extension from its installed width. The joint system consists of the following:
 - A. Fill, Void or Cavity Material* - Sealant —Min 1/2 in. (13 mm) thickness of fill material installed on each side of the wall between the top of the gypsum board and the bottom of the concrete floor, flush with each surface of the wall.

HILTI CONSTRUCTION CHEMICALS, DIV OF HILTI INC — CP606 Flexible Firestop Sealant.
 - B. Forming Material —(Optional, Not Shown) – In 2 hr rated walls, mineral wool insulation, fiberglass batt insulation or polyurethane/polyethylene foam backer rod to be recessed from both surfaces of the 2 hr fire rated wall to accommodate the required thickness of fill material (Item 3A).

* Indicates such products shall bear the UL or cUL Certification Mark for jurisdictions employing the UL or cUL Certification (such as Canada), respectively.