

UL/cUL SYSTEM NO. F-A-1207

# METAL PIPE THROUGH CONCRETE FLOOR ASSEMBLY

F-RATING = 2-HR.

T-RATING = 1-HR. OR 2-HR. (SEE ITEM 4 BELOW)

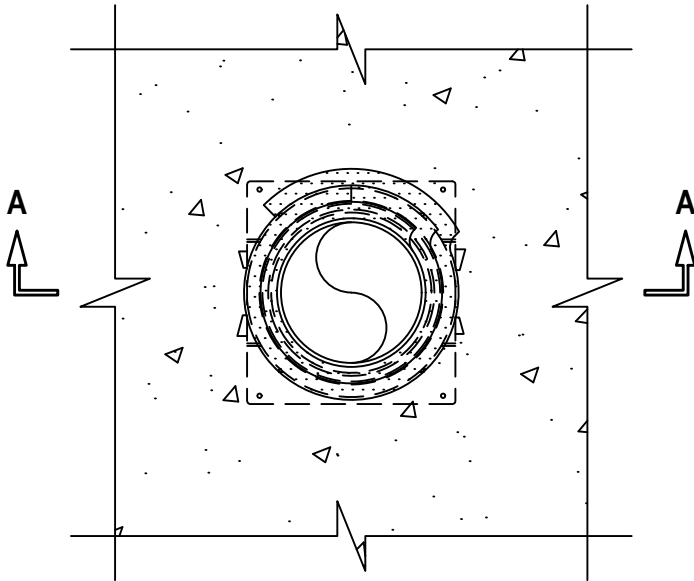
L-RATING AT AMBIENT = LESS THAN 1 CFM / SQ FT

L-RATING AT 400°F = LESS THAN 1 CFM / SQ FT

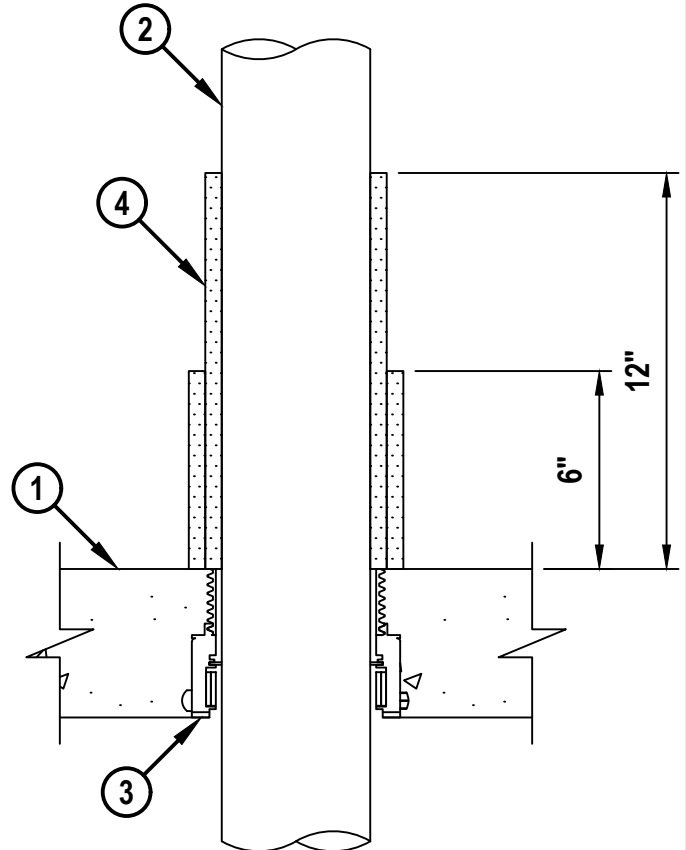
W-RATING = CLASS I (SEE NOTE NO. 2 BELOW)

FA1207b.022122

TOP VIEW



SECTION A-A



HILTI, Inc.  
Plano, Texas USA (800) 879-8000

Sheet	1 of 2
Scale	11/64" = 1"
Date	Feb. 21, 2022

Drawing No.  
**FA  
1207b**

*Saving Lives through Innovation and Education*

**METAL PIPE THROUGH CONCRETE FLOOR ASSEMBLY**

F-RATING = 2-HR.

T-RATING = 1-HR. OR 2-HR. (SEE ITEM 4 BELOW)

L-RATING AT AMBIENT = LESS THAN 1 CFM / SQ FT

L-RATING AT 400°F = LESS THAN 1 CFM / SQ FT

W-RATING = CLASS I (SEE NOTE NO. 2 BELOW)

FA1207b.022122

1. CONCRETE FLOOR ASSEMBLY (2-HR. FIRE-RATING) :
  - A. LIGHTWEIGHT OR NORMAL WEIGHT CONCRETE FLOOR (MINIMUM 4-1/2" THICK).
  - B. STEEL FLOOR UNIT/FLOOR ASSEMBLY (UL/cUL D700, D800, OR D900 SERIES) - LIGHTWEIGHT OR NORMAL WEIGHT CONCRETE FLOOR (MINIMUM 4-1/2" THICK) OVER METAL DECKING.
2. PENETRATING ITEM TO BE ONE OF THE FOLLOWING :
  - A. MAXIMUM 4" NOMINAL DIAMETER STEEL PIPE (SCHEDULE 10 OR HEAVIER).
  - B. MAXIMUM 4" NOMINAL DIAMETER CAST OR DUCTILE IRON PIPE.
  - C. MAXIMUM 4" NOMINAL DIAMETER STEEL CONDUIT OR EMT.
3. HILTI CP 680-M [2", 3", OR 4"], CP 680-P [2", 3", OR 4"], OR CP 680-PX [2" OR 3"] CAST-IN FIRESTOP DEVICE CAST OR GROUTED INTO CONCRETE FLOOR (SIZE OF DEVICE SHOULD EQUAL NOMINAL DIAMETER OF PIPE).
4. ONE LAYER OF HILTI CFP-ES ENDO-SHIELD TIGHTLY WRAPPED AROUND PENETRANT, EXTENDING 12" ABOVE THE FLOOR WITH A 2" OVERLAP AT SEAM. SEAM TO BE SEALED WITH FOIL-SCRIM-KRAFT OR FOIL TAPE. FOR 2-HR. T-RATING, AN ADDITIONAL LAYER OF HILTI CFP-ES ENDO-SHIELD SHALL BE TIGHTLY WRAPPED AROUND FIRST LAYER, EXTENDING 6" ABOVE THE FLOOR WITH A 2" OVERLAP AT SEAM. SEAM TO BE SEALED WITH FOIL-SCRIM-KRAFT OR FOIL TAPE.

**NOTES :** 1. FOR CONCRETE FLOOR OVER METAL DECKING APPLICATIONS, A METAL DECK ADAPTER KIT IS REQUIRED.  
 2. WATER BARRIER MODULE MAY BE THREADED ON TOP OF CAST-IN FIRESTOP DEVICE FOR NOMINAL 2", 3", AND 4" METAL PIPES (LISTED ABOVE). W-RATING ONLY APPLIES WHEN PIPE IS INSTALLED FROM BOTTOM OF DEVICE.



HILTI, Inc.  
 Plano, Texas USA (800) 879-8000

Sheet	2 of 2
Scale	-
Date	Feb. 21, 2022

Drawing No.  
**FA  
 1207b**