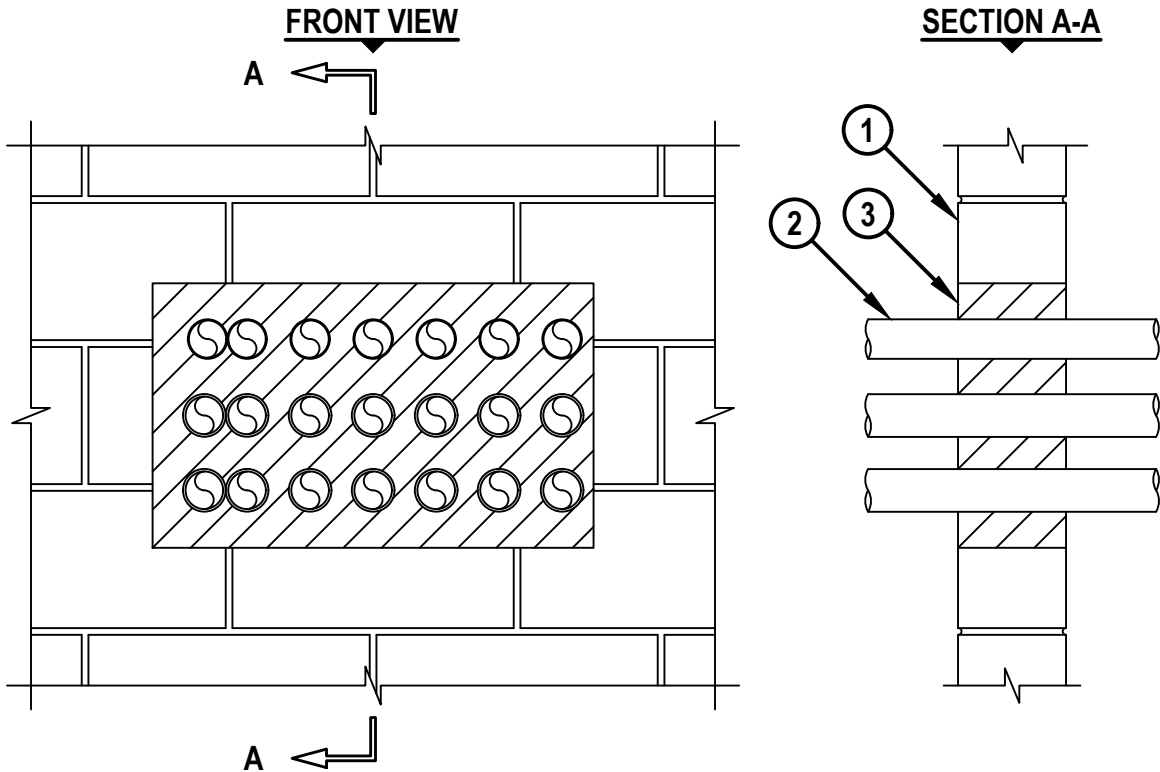


**MULTIPLE METAL PIPES THROUGH CONCRETE WALL OR BLOCK WALL ASSEMBLY**

F-RATING = 2-HR.  
T-RATING = 1/2-HR.

WJ1327a.092321



1. CONCRETE WALL ASSEMBLY (2-HR. FIRE-RATING) :
  - A. LIGHTWEIGHT OR NORMAL WEIGHT CONCRETE WALL (MINIMUM 6" THICK).
  - B. ANY UL/cUL CLASSIFIED CONCRETE BLOCK WALL.
2. ONE OR MORE MAXIMUM 2" NOMINAL DIAMETER STEEL CONDUIT OR EMT.
3. MINIMUM 6" DEPTH HILTI CP 660 FIRESTOP FOAM FLUSH WITH BOTH SURFACES OF WALL.

NOTES : 1. MAXIMUM AREA OF OPENING = 360 SQ. IN., WITH A MAXIMUM DIMENSION OF 24-1/2".  
 2. ANNULAR SPACE BETWEEN PENETRANTS AND PERIPHERY OF OPENING = MINIMUM 1/2", MAXIMUM 2".  
 3. ANNULAR SPACE BETWEEN PENETRANTS = MINIMUM 0", MAXIMUM 2".



HILTI, Inc.  
Plano, Texas USA (800) 879-8000

Sheet	1 of 1
Scale	3/32" = 1"
Date	Sep. 23, 2021

Drawing No.  
**WJ**  
**1327a**