

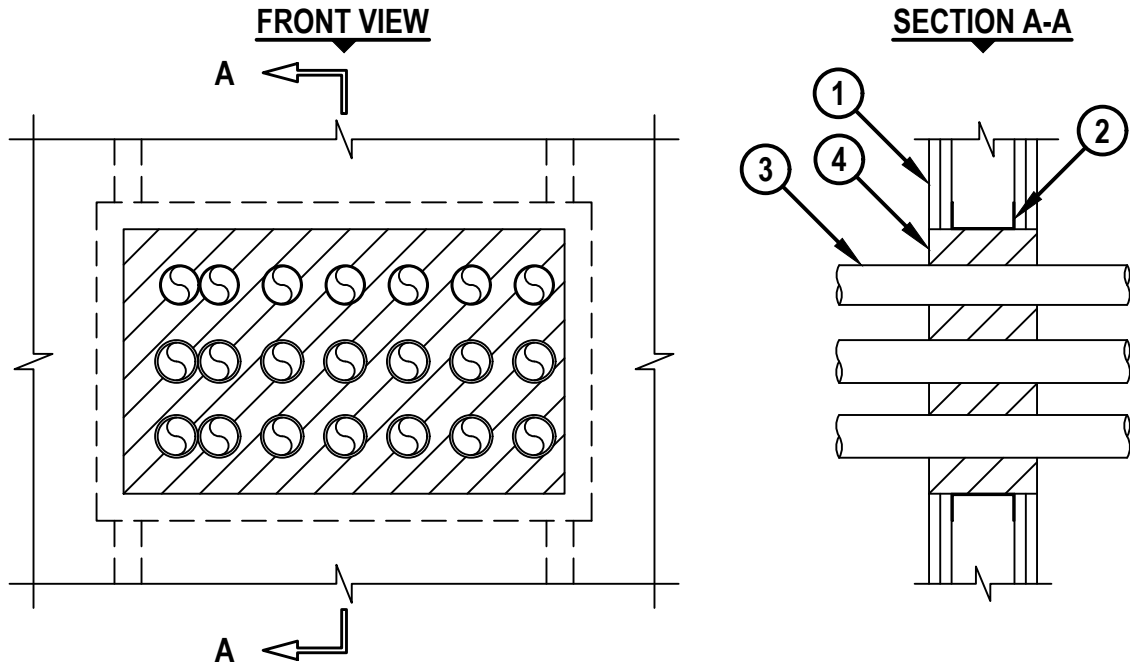
UL/cUL SYSTEM NO. W-L-1603

MULTIPLE METAL PIPES THROUGH GYPSUM WALL ASSEMBLY

F-RATING = 1-HR. OR 2-HR.

T-RATING = 1/2-HR.

WL 1603a.092321



1. GYPSUM WALL ASSEMBLY (UL/cUL CLASSIFIED U400 SERIES) (MIN. 3-1/2" WIDE STEEL STUDS) (1-HR. OR 2-HR. FIRE-RATING) (2-HR. SHOWN).
2. OPENING TO BE "FRAMED OUT" WITH LIGHTGAGE STEEL STUDS (MIN. 3-1/2" WIDE).
3. ONE OR MORE MAXIMUM 2" NOMINAL DIAMETER STEEL CONDUIT OR EMT.
4. HILTI CP 660 FIRESTOP FOAM FLUSH WITH BOTH SURFACES OF WALL :
 - A. MINIMUM 4-3/4" DEPTH FOR A 1-HR. FIRE-RATING.
 - B. MINIMUM 6" DEPTH FOR A 2-HR. FIRE-RATING.

NOTES : 1. MAXIMUM AREA OF OPENING = 360 SQ. IN., WITH A MAXIMUM DIMENSION OF 24-1/2".
2. ANNULAR SPACE BETWEEN PENETRANTS AND PERIPHERY OF OPENING = MINIMUM 1/2", MAXIMUM 2".
3. ANNULAR SPACE BETWEEN PENETRANTS = MINIMUM 0", MAXIMUM 2".

HILTI
Hilti Firestop Systems

HILTI, Inc.
Plano, Texas USA (800) 879-8000

| | |
|-------|---------------|
| Sheet | 1 of 1 |
| Scale | 3/32" = 1" |
| Date | Sep. 23, 2021 |

Drawing No.
WL
1603a

Saving Lives through Innovation and Education