

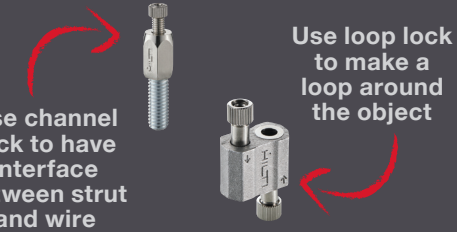
# INSTALLATION JUST GOT EASIER

## Wire hanger system

Experience faster, easier installations with Hilti's new pre-cut wire hanger system. Ideal overhead hanging for spiral and rectangular HVAC ducting and lighting applications, wire hangers can help reduce costs, increase productivity, all while delivering an aesthetically pleasant support solution for your HVAC and electrical jobs. The system works with both battery (BX) and powder-actuated (DX) fasteners, our anchor platform, and comes with loop lock and channel lock.



Install the system to versatile base materials such as concrete, steel, deck, and wood



## APPLICATIONS AND ADVANTAGES

### BX wire hanger



- Overhead hanging of HVAC and electrical system for load capacity up to 30 lbs
- From floor access with pole tools for extra convenience
- Innovative and unique loop lock with built-in safety nut feature
- Only system that works with a battery actuated fastening tool

### DX wire hanger



- Overhead hanging of HVAC and electrical system for load capacity up to 100 lbs
- From floor access with pole tools for added convenience
- Available with both loop lock and channel lock
- Fastener is pre-assembled to the clip

### Anchor wire hanger



- Overhead hanging of HVAC and electrical system for load capacity up to 200 lbs
- Innovative and unique loop lock and channel lock with built-in safety nut
- Ventilation angles for increased productivity
- Compatible with Hilti anchors
- Design and model within Profis MSE software

## Technical data

### BX wire hanger

<b>Base material</b>	Concrete, concrete on metal deck, steel, wood, deck
<b>Length</b>	6ft, 10 ft, 20 ft
<b>Diameter</b>	2mm
<b>Load value</b>	Up to 30 lbs
<b>Use with tool</b>	BX 3 ME 02
<b>Material</b>	Carbon steel
<b>Approval</b>	UL, ICC

### DX wire hanger

<b>Base material</b>	Concrete, concrete on metal deck, steel
<b>Length</b>	6ft, 10 ft, 20 ft
<b>Diameter</b>	2mm
<b>Load value</b>	Up to 100 lbs
<b>Use with tool</b>	DX 351 ME
<b>Material</b>	Carbon steel
<b>Approval</b>	UL, ICC

### Anchor wire hanger

<b>Base material</b>	Concrete, concrete on metal deck, steel
<b>Length</b>	6ft, 10 ft, 20 ft
<b>Diameter</b>	2mm and 3mm
<b>Load value</b>	Up to 200 lbs
<b>Use with tool</b>	TE 30 A, SIW 22-A
<b>Material</b>	Carbon steel
<b>Approval</b>	UL

## Order information - BX/DX wire hanger

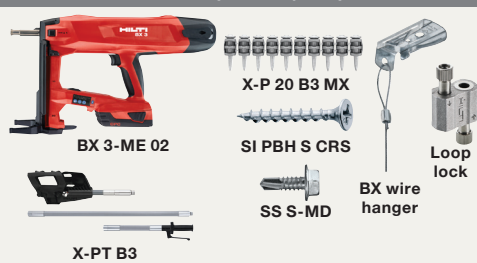
Lock	Description	Type	Length	Nail	Qty	Item number
Loop lock	X-MW MX L 6ft/2m	BX wire hanger in 2mm diameter	6 ft	MX	30 pc	2325727
	X-MW MX L 10ft/3m		10 ft	MX	30 pc	2325728
	X-MW MX L 20ft/6m		20 ft	MX	20 pc	2325729
	X-MW ALH27 L 6ft/2m	DX wire hanger in 2mm diameter	6 ft	27 (preassembled)	30 pc	2325730
	X-MW ALH27 L 10ft/3m		10 ft	27 (preassembled)	30 pc	2325731
	X-MW ALH27 L 20ft/6m		20 ft	27 (preassembled)	20 pc	2325732
X-MW ALH32 L 10ft/3m	10 ft		32 (preassembled)	30 pc	2325733	
X-MW ALH27 CL 6ft/2m	6 ft		27 (preassembled)	30 pc	2325734	
X-MW ALH27 CL 10ft/3m	10 ft		27 (preassembled)	30 pc	2325735	
Channel lock	X-MW ALH27 CL 20ft/6m		20 ft	27 (preassembled)	20 pc	2325736
	X-MW ALH32 CL 10ft/3m		10 ft	32 (preassembled)	30 pc	2325737

## Order information - Anchor wire hanger

Lock	Description	Type	Length	Qty	Item number	
Loop lock	MW-EB 1/4 L 2.0 6ft/2m	2mm diameter	6 ft	30 pc	2331640	
	MW-EB 1/4 L 2.0 10ft/3m	2mm diameter	10 ft	30 pc	2331641	
	MW-EB 1/4 L 2.0 20ft/6m	2mm diameter	20 ft	20 pc	2331642	
	MW-EB 3/8 L 3.0 6ft/2m	3mm diameter	6 ft	30 pc	2331646	
	MW-EB 3/8 L 3.0 10ft/3m	3mm diameter	10 ft	30 pc	2331647	
	MW-EB 3/8 L 3.0 20ft/6m	3mm diameter	20 ft	20 pc	2331648	
	MW-LP L 2.0 6ft/2m	2mm diameter	6 ft	30 pc	2331652	
	MW-LP L 2.0 10ft/3m	2mm diameter	10 ft	30 pc	2331653	
	MW-LP L 2.0 20ft/6m	2mm diameter	20 ft	20 pc	2331654	
	MW-LP L 3.0 6ft/2m	3mm diameter	6 ft	30 pc	2331658	
	MW-LP L 3.0 10ft/3m	3mm diameter	10 ft	30 pc	2331659	
	MW-LP L 3.0 20ft/6m	3mm diameter	20 ft	20 pc	2331660	
	Clip MW-C	-	-	-	50 pc	2287563
	Channel lock	MW-EB 1/4 CL 2.0 6ft/2m	2mm diameter	6 ft	30 pc	2331643
		MW-EB 1/4 CL 2.0 10ft/3m	2mm diameter	10 ft	30 pc	2331644
MW-EB 1/4 CL 2.0 20ft/6m		2mm diameter	20 ft	20 pc	2331645	
MW-EB 3/8 CL 3.0 6ft/2m		3mm diameter	6 ft	30 pc	2331649	
MW-EB 3/8 CL 3.0 10ft/3m		3mm diameter	10 ft	30 pc	2331650	
MW-EB 3/8 CL 3.0 20ft/6m		3mm diameter	20 ft	20 pc	2331651	
MW-LP CL 2.0 6ft/2m		2mm diameter	6 ft	30 pc	2331655	
MW-LP CL 2.0 10ft/3m		2mm diameter	10 ft	30 pc	2331656	
MW-LP CL 2.0 20ft/6m		2mm diameter	20 ft	20 pc	2331657	
MW-LP CL 3.0 6ft/2m		3mm diameter	6 ft	30 pc	2331661	
MW-LP CL 3.0 10ft/3m		3mm diameter	10 ft	30 pc	2331662	
MW-LP CL 3.0 20ft/6m		3mm diameter	20 ft	20 pc	2331663	
MVA-ZP		-	-	-	25 pc	411499
MVA-Z		-	-	-	50 pc	386532

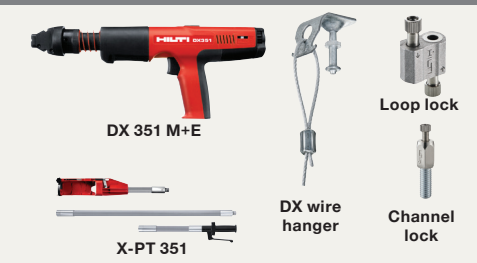
### BX Battery-actuated

BX 3-ME 02 and pole tool/nail portfolio



### DX Powder-actuated

DX 351 and pole tool/cartridges



### TE 30 A and SIW 22-A

to drill and fasten hangers



we want to hear from you

