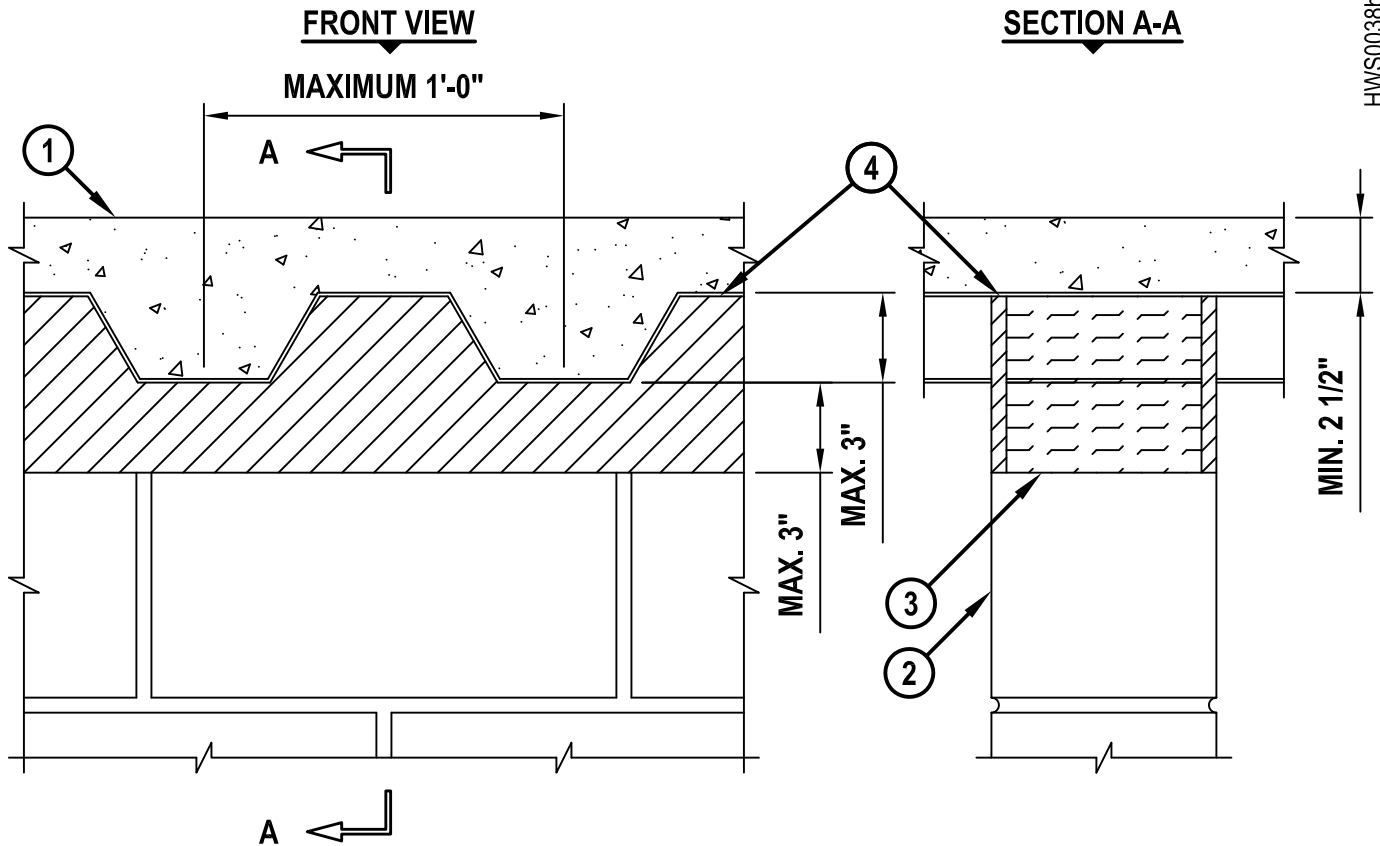


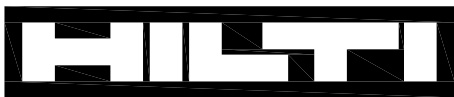
TOP OF WALL JOINT : CONCRETE WALL OR CONCRETE BLOCK WALL ASSEMBLY

ASSEMBLY RATING = 2-HR.

HWS0038b.123014



1. LIGHTWEIGHT OR NORMAL WEIGHT CONCRETE FLOOR (MIN. 2-1/2" THICK) OVER METAL DECKING (2-HR. FIRE RATING).
2. CONCRETE WALL ASSEMBLY (2-HR. FIRE-RATING) :
 - A. LIGHTWEIGHT OR NORMAL WEIGHT CONCRETE WALL (MINIMUM 5-1/2" THICK).
 - B. ANY UL/cUL CLASSIFIED CONCRETE BLOCK WALL.
3. MINIMUM 4-1/2" THICKNESS MINERAL WOOL SAFING (MIN. 4 PCF DENSITY) TO BE FIRMLY PACKED INTO FLUTES AND RECESSED 1/2" ON EACH SIDE OF WALL TO ACCOMMODATE SEALANT.
4. MINIMUM 1/2" DEPTH HILTI FS-ONE MAX OR FS-ONE FIRESTOP SEALANT ON BOTH SIDES OF WALL ASSEMBLY.



Hilti Firestop Systems

HILTI, Inc.
Tulsa, Oklahoma USA (800) 879-8000

Sheet	1 of 1
Scale	5/32" = 1"
Date	Dec. 30, 2014

Drawing No.

**HWS
0038b**