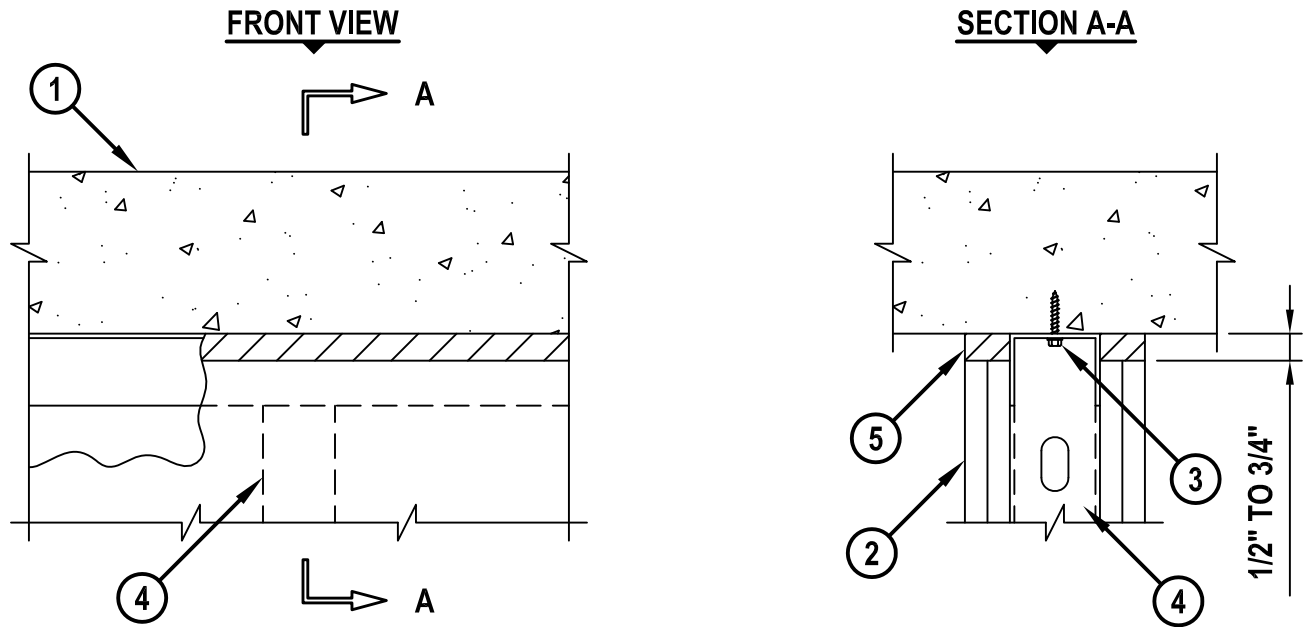


**TOP OF WALL JOINT : GYPSUM WALL ASSEMBLY**

ASSEMBLY RATING = 1-HR. OR 2-HR (DEPENDING ON RATING OF WALL ASSEMBLY).

HWS0039b.123014



1. LIGHTWEIGHT OR NORMAL WEIGHT CONCRETE FLOOR ASSEMBLY (MINIMUM 4-1/2" THICK).
2. GYPSUM WALL ASSEMBLY (1-HR. OR 2-HR. FIRE-RATING) (2-HR. SHOWN).
3. METAL DEFLECTION TRACK FASTENED TO THE UNDERSIDE OF THE DECK. DEFLECTION TRACK SHALL CONSIST OF A SINGLE TRACK OR NESTED DOUBLE TRACK SYSTEM CAPABLE OF UNRESTRICTED MOVEMENT AS REQUIRED BY THE DESIGNER.
4. STEEL STUDS TO BE MIN. 2-1/2" WIDE. STUD SPACING SHOULD NOT EXCEED 24" CENTER TO CENTER.
5. HILTI FS-ONE MAX OR FS-ONE FIRESTOP SEALANT :
  - A. MINIMUM 5/8" DEPTH ON BOTH SIDES OF WALL, FOR A 1-HR. FIRE-RATING.
  - B. MINIMUM 1-1/4" DEPTH ON BOTH SIDES OF WALL, FOR A 2-HR. FIRE-RATING.



HILTI, Inc.  
Tulsa, Oklahoma USA (800) 879-8000

Sheet	1 of 1
Scale	3/16" = 1"
Date	Dec. 30, 2014

Drawing No.  
**HWS  
0039b**