

CFS-MSL GCL GANGING CLIPS AND REMOVAL TOOL

Product description

- Clamps required for ganging of modular sleeves in customized configurations and removal tool for ganging clip changes/modifications

Product features

- Allows for faster and more secure ganging of modular fire sleeves in wall and floor frames
- Removal Tool designed for easier and simpler removal of ganging clips for changes or modifications to ganged assembly
- Withstands the rigors of usage and time
- Buy American Compliant

Areas of application

- Cable and cable bundles
- For use whenever multiple modular sleeves are ganged together

For use with CFS-MSL Modular Sleeve Systems in:

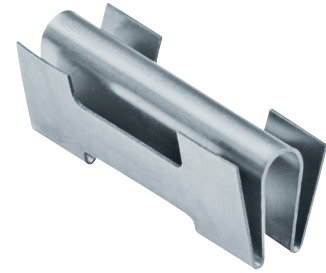
- Concrete floor systems rated up to 2 hours
- Gypsum wall systems rated up to 2 hours
- CFS-MSL System when ganging devices together

Examples

- Electrical wiring
- Premise wiring
- Low voltage and datacom

Installation instructions

- See Hilti literature or third-party listings for complete application and installation details



Technical Data (packages of 4 or 12 Ganging clips)

Application & storage temperature	-22 °F to 167 °F (-30 °C to 75 °C)
Metal	Steel with zinc coating
Tested in accordance with	UL 1479 ASTM E 814 CAN/ULC-S115

Firestop Device
FOR USE IN THROUGH
PENETRATION FIRESTOP
SYSTEMS SEE
UL PRODUCT IQ

