



MODULAR SUPPORT SYSTEMS

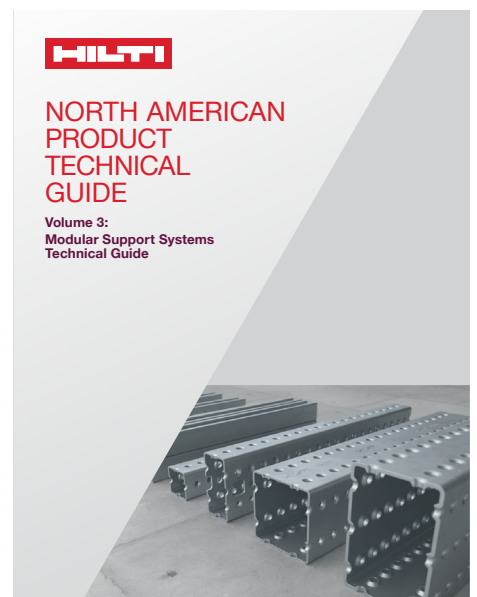
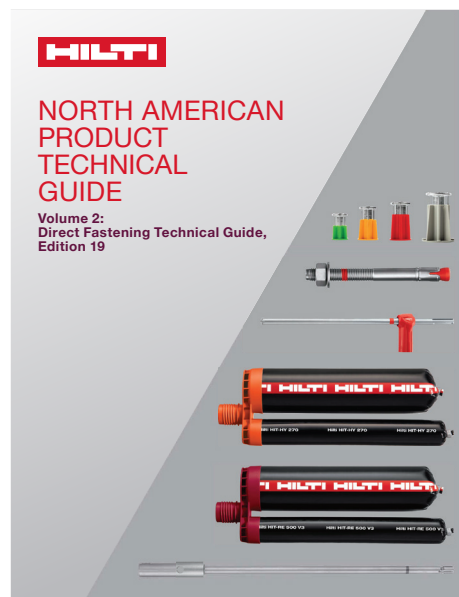
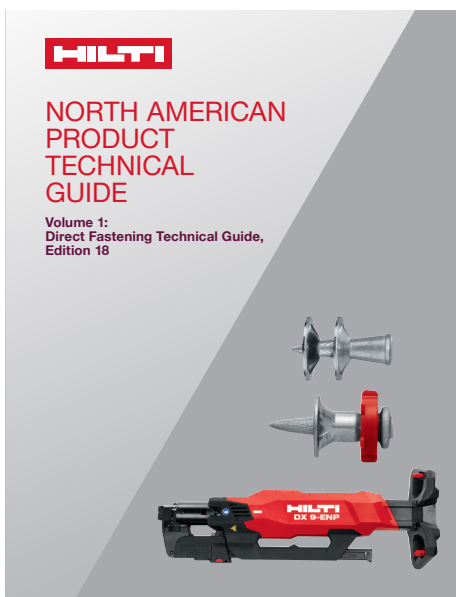
**Productivity Components:
Technical Supplement Guide
2022**

CONTENT OVERVIEW

1.0 GENERAL INFORMATION 4

2.0 PRODUCTIVITY COMPONENTS 5

Hilti North American Product Technical Guide Volumes 1, 2 and 3 are also available.
Contact your Hilti Field Engineer about them today.



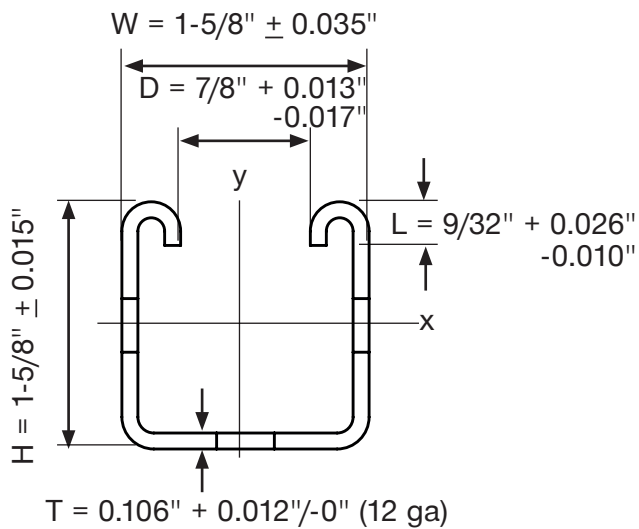
1.0 GENERAL INFORMATION	4
1.1 Definitions	4
2.0 PRODUCTIVITY COMPONENTS	5
2.1 Components and Accessories	5
MQZ - TW Trapeze Wheel	5
MQA-F / MQA-S Saddle Nut	6
MH-SLT Speed Lock Trapeze Nut	7
MH-R45 Strut Clamps — Rigid	8
MH-EMT Strut Clamp — 45EMT	9
MH-EMTV Strut Clamps — EMT Top Screw	10
SLC-EG Speed Lock Clevis Hanger	11
MQN Pushbutton (Connector)	12
MQM Wing Nut	13
BC Beam Clamp	14
BC-WM Wide Mouth Beam Clamp	15
MQT-U Strut Beam Clamp	16
MQZ-L Base Plates	17
MQW-Q2 Angle Pre-Assembled 90°	18
MQW Angles	19
Base Connectors	20
Eye Coupler / Offset Eye Coupler	21
Rod Couplers	22

1.0 GENERAL INFORMATION

1.1 DEFINITIONS

"Generic Strut"

"Generic strut" is defined as a strut which complies with requirements from Metal Framing Manufacturers Association Standards Publication 2004 Revision (MFMA-4). The nominal dimensions are 1-5/8" x 1-5/8" x 12 gauge, with detailed dimensions as shown below.



Notes:

- Tolerance on Width (W) and Height (H) per MFMA-4 (REF 5.1.2)
- Width (W) and Height (H) must be measured at least 3" from cut end per MFMA-4
- No tolerance specified for Depth (D) and Length (L) in MFMA-4, tolerance band established by strut sample measurement results
- Value for Thickness (T) per ASTM A653 & MFMA-4 (includes coating thickness), tolerance per ASTM A924
- Can be either solid or slotted

The material/finish for "generic strut" is pre-galvanized steel per ASTM A653 Grade 33, G90:

- Minimum yield strength = 33 ksi
- Minimum tensile strength = 45 ksi
- Minimum coating weight = 0.90 oz/ft² (~0.7 mil per side)

Dimensional and material analysis was completed on random samples of all sample strut types.

2.0 PRODUCTIVITY COMPONENTS

MQZ-TW TRAPEZE WHEEL

Product Features

- Integrated nut and washer for fastening channel to threaded rod
- Tool free installation possible
- Faster and less error-prone installation compared to traditional alternatives
- Easier fine-tune adjustments for leveling

Material Specifications

Material	Carbon Steel - DD11 MOD - HN 547, DC04 - DIN EN 10130
Finish	Electro-galvanized
Approvals/Listings	CSA Group (Hardware for the support of conduit, tubing, and cable)

Scan for CSA
approval
documentation



Technical Information

Description	Connection Thread	Box Qty.	Allowable Tension Load (lb)	Required Installation Torque (ft-lb)	Item No.
Trapeze Wheel MQZ-TW 3/8"	3/8"	50	870	7	2293068

Safety factor available upon request.

INSTALLATION INSTRUCTIONS

Installation instructions for use (IFU) are included with each product package. They can also be viewed or downloaded online at www.hilti.com. Because of the possibility of changes, always verify that downloaded IFU are current when used. Proper installation is critical to achieve full performance. Training is available on request. Contact Hilti Technical Services for applications and conditions not addressed in the IFU.

2.0 PRODUCTIVITY COMPONENTS

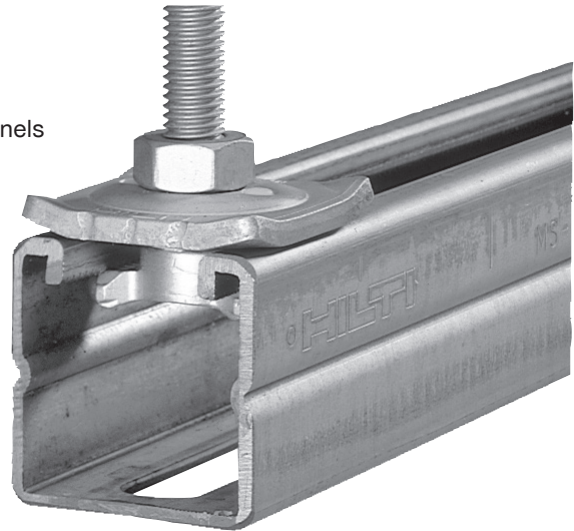
MQA-F / MQA-S SADDLE NUT

Product Features

- Quick connection of threaded components to the open side of channels
- Easier installation and positioning within strut channel openings
- A single part replacing spring nuts and base plates
- Fits most strut profiles

Material Specifications

Material	Carbon Steel - Nut: C4C - EN 10263-2, Plate: S235JR - EN 10025-2, Plastic: PBT
Finish	Electro-galvanized



MQA-S



MQA-F

Technical Information

Description	Connection Thread	Weight/Piece (lb)	Box Qty.	Required Installation Torque (ft-lb)	Allowable Shear Load MFMA-4 (lb)	Allowable Shear Load Hilti MT (lb)	Allowable Tension Load MFMA-4 (lb)	Allowable Tension Load Hilti MT (lb)	Item No.
MQA-F 1/4"	1/4"	0.194	50	7	125	145	1000	1050	377884
MQA-F 1/2"	1/2"	0.183	50	30	280	300	1100	1150	377886
MQA-F 5/8"	5/8"	0.185	50	30	280	N/A	1780	N/A	377887
MQA-S 3/8"	3/8"	0.116	50	14	100	110	500	535	2293069

Safety factor available upon request.

INSTALLATION INSTRUCTIONS

Installation instructions for use (IFU) are included with each product package. They can also be viewed or downloaded online at www.hilti.com. Because of the possibility of changes, always verify that downloaded IFU are current when used. Proper installation is critical to achieve full performance. Training is available on request. Contact Hilti Technical Services for applications and conditions not addressed in the IFU.

2.0 PRODUCTIVITY COMPONENTS

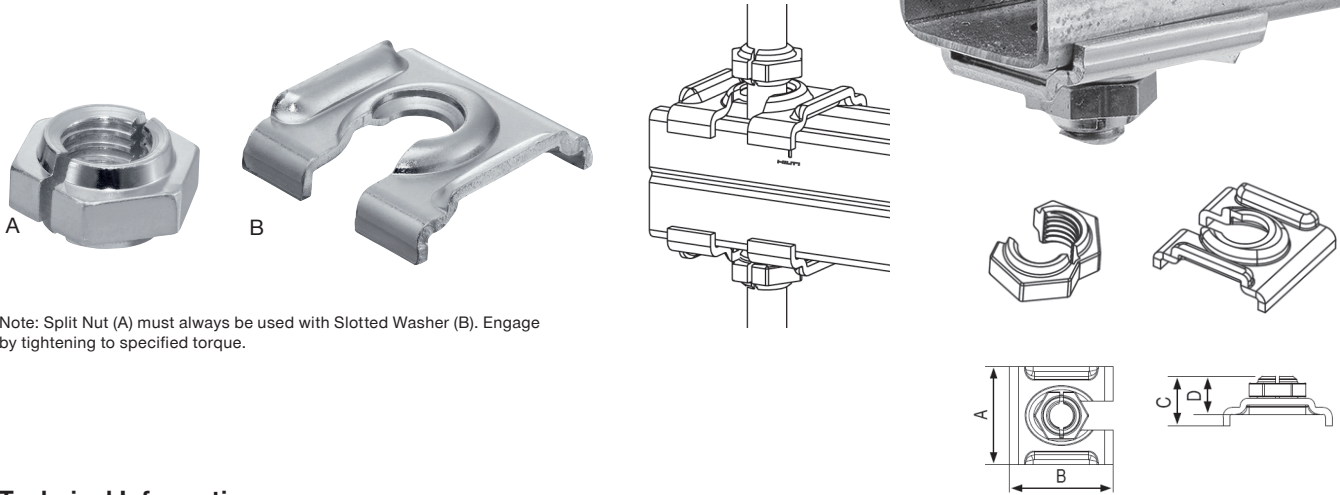
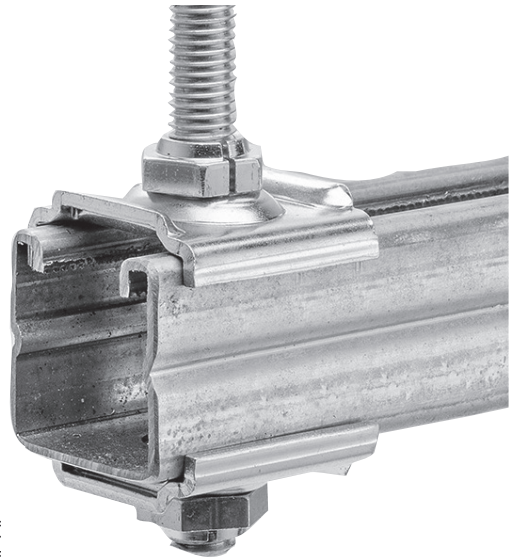
MH-SLT SPEED LOCK TRAPEZE NUT

Product Features

- Nut and washer can be installed at any position on the threaded rod, for quicker and more accurate trapeze building
- Use split nut only in conjunction with slotted washer and 1-5/8" wide strut

Material Specifications

Material	Plate - Carbon steel, DIN EN 10149-2, S460MC
Finish	Electro-galvanized



Note: Split Nut (A) must always be used with Slotted Washer (B). Engage by tightening to specified torque.

Technical Information

Description	Box Qty.	Required Installation Torque (ft-lb)	Allowable Tension Load (lb)	Wrench Size (in)	A Dimension (in)	B Dimension (in)	C Dimension (in)	D Dimension (in)	Item No.
MH-SLT 1/2" EG	40	22 ft-lb	1350	7/8"	1 3/4"	1 7/8"	3/4"	9/16"	2008781

Safety factor available upon request.

INSTALLATION INSTRUCTIONS

Installation instructions for use (IFU) are included with each product package. They can also be viewed or downloaded online at www.hilti.com. Because of the possibility of changes, always verify that downloaded IFU are current when used. Proper installation is critical to achieve full performance. Training is available on request. Contact Hilti Technical Services for applications and conditions not addressed in the IFU.

2.0 PRODUCTIVITY COMPONENTS

MH-R45 STRUT CLAMPS — RIGID

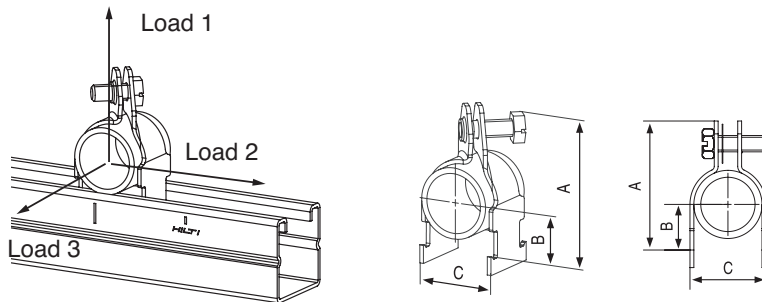
Product Features

- Tightening screw at 45° angle for easy access
- Sized for rigid conduit
- One piece out of the box, simply break apart and install
- Innovative design requires no nuts for fast and easy assembly
- Manufacturers Standardization Society MSS-SP-58 (Type 1)

Material Specifications

Material	Carbon steel
Finish	Electro-galvanized
Approvals/Listings	CSA Group (Hardware for the support of conduit, tubing, and cable)

Scan for CSA approval documentation



Technical Information

Description	Bolt Diameter x Length	Box Qty.	Wrench Size (in)	Required Installation Torque (ft-lb)	A Dimension (in)	B Dimension (in)	C Dimension (in)	Allowable Load 1 (lb)	Allowable Load 2 (lb)	Allowable Load 3 (lb)	Item No.
MH-R45 1/2" PG	5/16"-18 UNC x 3/4"	100	1/2"	5	2 1/8"	11/16"	15/16"	400	50	40	2008810
MH-R45 3/4" PG	5/16"-18 UNC x 3/4"	100	1/2"	5	2 3/8"	13/16"	3/16"	400	50	40	2008811
MH-R45 1" PG	5/16"-18 UNC x 3/4"	100	1/2"	5	2 11/16"	15/16"	7/16"	600	75	50	2008812
MH-R45 1-1/4" PG	5/16"-18 UNC x 1"	50	1/2"	5	3 1/16"	1 1/8"	1 13/16"	600	75	50	2008813
MH-R45 1-1/2" PG	5/16"-18 UNC x 1"	50	1/2"	5	3 1/4"	1 1/4"	2 1/16"	600	100	50	2008814
MH-R45 2" PG	5/16"-18 UNC x 1"	50	1/2"	5	3 3/4"	1 1/2"	2 1/2"	600	100	60	2008815
MH-R45 2-1/2" PG	3/8"-16 UNC x 1-1/4"	25	9/16"	5	4 5/16"	1 11/16"	3 1/16"	800	100	60	2008816
MH-R45 3" PG	3/8"-16 UNC x 1-1/4"	25	9/16"	5	5"	2"	3 11/16"	800	100	150	2008817
MH-R45 4" PG	3/8"-16 UNC x 1-1/4"	25	9/16"	5	6 1/16"	2 9/16"	4 11/16"	800	100	150	2008818
MH-R45 6" PG	3/8"-16 UNC x 1-1/4"	10	9/16"	5	8"	3 9/16"	6 7/8"	1000	100	150	2008819
MH-R45 8" PG	3/8"-16 UNC x 1-1/4"	10	9/16"	5	10 1/4"	4 9/16"	8 7/8"	1000	100	150	2008820

Safety factor available upon request.

INSTALLATION INSTRUCTIONS

Installation instructions for use (IFU) are included with each product package. They can also be viewed or downloaded online at www.hilti.com. Because of the possibility of changes, always verify that downloaded IFU are current when used. Proper installation is critical to achieve full performance. Training is available on request. Contact Hilti Technical Services for applications and conditions not addressed in the IFU.

2.0 PRODUCTIVITY COMPONENTS

MH-EMT STRUT CLAMP — 45EMT

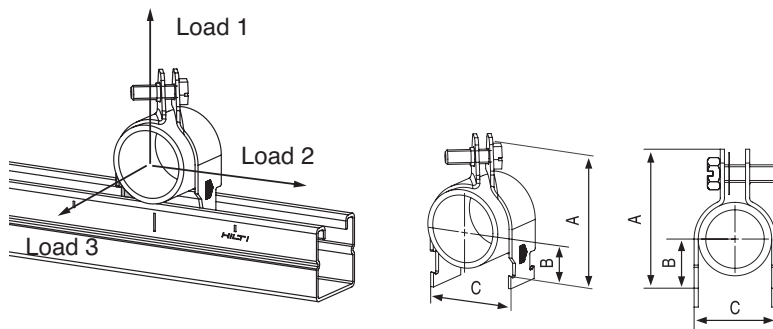
Product Features

- Pre-assembled out of box; tightening screw at 45° angle for easy access
- Sized for electrical metallic tubing (EMT)
- Innovative design requires no nuts for fast and easy assembly
- Manufacturers Standardization Society MSS-SP-58 (Type 1)

Material Specifications

Material	Carbon steel
Finish	Electro-galvanized
Approvals/Listings	CSA Group (Hardware for the support of conduit, tubing, and cable)

Scan for CSA approval documentation



Technical Information

Description	Bolt Diameter x Length	Box Qty.	Wrench Size (in)	Required Installation Torque (ft-lb)	A Dimension (in)	B Dimension (in)	C Dimension (in)	Allowable Load 1 (lb)	Allowable Load 2 (lb)	Allowable Load 3 (lb)	Item No.
MH-EMT45 1/2" PG	5/16"-18 UNC x 3/4"	100	1/2"	5	2"	5/8"	13/16"	200	50	30	2008821
MH-EMT45 3/4" PG	5/16"-18 UNC x 3/4"	100	1/2"	5	2 3/16"	3/4"	1 1/16"	200	50	30	2008822
MH-EMT45 1" PG	5/16"-18 UNC x 3/4"	100	1/2"	5	2 1/2"	7/8"	1 5/16"	200	75	40	2008823
MH-EMT45 1-1/4" PG	5/16"-18 UNC x 1"	50	1/2"	5	2 13/16"	1 1/16"	1 11/16"	200	75	40	2008824
MH-EMT45 1-1/2" PG	5/16"-18 UNC x 1"	50	1/2"	5	3 1/16"	1 3/16"	1 7/8"	200	100	40	2008825
MH-EMT45 2" PG	5/16"-18 UNC x 1"	50	1/2"	5	3 1/2"	1 3/8"	2 3/8"	200	100	50	2008826

Safety factor available upon request.

INSTALLATION INSTRUCTIONS

Installation instructions for use (IFU) are included with each product package. They can also be viewed or downloaded online at www.hilti.com. Because of the possibility of changes, always verify that downloaded IFU are current when used. Proper installation is critical to achieve full performance. Training is available on request. Contact Hilti Technical Services for applications and conditions not addressed in the IFU.

2.0 PRODUCTIVITY COMPONENTS

MH-EMTV STRUT CLAMPS — EMT TOP SCREW

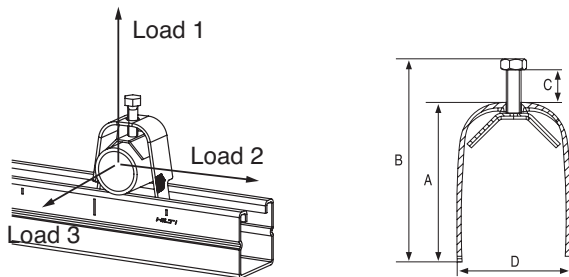
 Scan for CSA
approval
documentation


Product Features

- Pre-assembled out of box
- Tightening screw on top for easy access
- Sized for electrical metal tubing (EMT)
- Manufacturers Standardization Society MSS-SP-58 (Type 1)

Material Specifications

Material	Carbon steel
Finish	Electro-galvanized
Approvals/Listings	CSA Group (Hardware for the support of conduit, tubing, and cable)



Technical Information

Description	Bolt Diameter x Length (in)	Box Qty.	Wrench Size (in)	Required Installation Torque (ft-lb)	A Dimension (in)	B Dimension (in)	C Dimension (in)	D Dimension (in)	Allowable Load 1 (lb)	Allowable Load 2 (lb)	Allowable Load 3 (lb)	Item No.
MH-EMTV 1/2" PG	1/4"-20 UNC x 7/8	100	3/8"	2 1/2	1 3/4"	2 1/2"	9/16"	1/8"	200	50	30	2008827
MH-EMTV 3/4" PG	1/4"-20 UNC x 7/8	100	3/8"	2 1/2	2"	11/16"	1/2"	1 5/16"	200	50	30	2008828
MH-EMTV 1" PG	1/4"-20 UNC x 7/8	50	3/8"	2 1/2	2 3/8"	11/16"	1/2"	1 1/2"	200	75	40	2008829
MH-EMTV 1-1/4" PG	1/4"-20 UNC x 7/8	50	3/8"	2 1/2	2 5/8"	3/4"	9/16"	1 7/8"	200	75	40	2008830
MH-EMTV 1-1/2" PG	1/4"-20 UNC x 7/8	50	3/8"	2 1/2	2 7/8"	3/4"	9/16"	2 1/8"	200	75	40	2008831
MH-EMTV 2" PG	1/4"-20 UNC x 1	25	3/8"	2 1/2	3 5/16"	7/8"	11/16"	2 1/2"	200	75	50	2008832
MH-EMTV 2" FLEX	1/4"-20 UNC x 7/8	25	3/8"	2 1/2	3 9/16"	4 5/16"	9/16"	2 3/4"	200	75	50	2016764
MH-EMTV 2-1/2" PG	1/4"-20 UNC x 1	25	3/8"	2 1/2	4 3/8"	5 3/16"	5/8"	3 5/16"	350	75	50	2008833
MH-EMTV 3" PG	1/4"-20 UNC x 1	10	3/8"	2 1/2	4 7/8"	5 11/16"	5/8"	3 15/16"	350	75	50	2008834
MH-EMTV 4" PG	1/4"-20 UNC x 1	10	3/8"	2 1/2	5 13/16"	6 5/8"	5/8"	4 15/16"	350	75	50	2008835

Safety factor available upon request.

INSTALLATION INSTRUCTIONS

Installation instructions for use (IFU) are included with each product package. They can also be viewed or downloaded online at www.hilti.com. Because of the possibility of changes, always verify that downloaded IFU are current when used. Proper installation is critical to achieve full performance. Training is available on request. Contact Hilti Technical Services for applications and conditions not addressed in the IFU.

2.0 PRODUCTIVITY COMPONENTS

SLC-EG SPEED LOCK CLEVIS HANGER

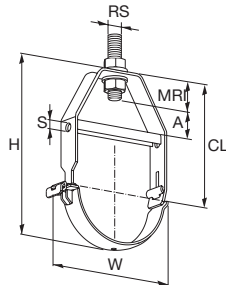
Product Features

- Unique Speed Lock System means no hanger disassembly
- One piece eliminates lost/dropped nuts and bolts
- FM approved and UL, cUL listed
- Manufacturers Standardization Society MSS-SP-58 (Type 1)
- Meets Federal Specification WW-H-171E (Type 1)



Material Specifications

Material	Carbon steel
Finish	Electro-galvanized
Approvals/Listings	UL and cUL (Underwriters Laboratory) for 2" through 8" FM (Factory Mutual) for 2" through 8"



Technical Information

Description	Pipe Size (in)	Height H (in)	Width W (in)	CL	Rod Size RS (in)	Minimum Rod Insertion MRI (in)	A Dimension (in)	S Dimension (in)	Single Item No.	Bulk Item No.	Bulk Item Qty.	Allowable Load (lb) ¹
SLC-EG 2"	2"	5"	3 9/16"	3 5/8"	3/8"	9/16"	1 5/16"	5/16"	2008782	3475949	50	610
SLC-EG 2-1/2"	2 1/2"	6"	4 5/8"	4 7/16"	1/2"	7/16"	1 3/16"	7/16"	2008783	3475950	50	1130
SLC-EG 3"	3"	6 7/8"	5 1/16"	4 13/16"	1/2"	3/4"	1 7/16"	7/16"	2008784	3475951	50	1130
SLC-EG 4"	4"	8 1/2"	6 1/8"	5 7/8"	5/8"	15/16"	1 7/16"	7/16"	2008785	3475952	20	1130
SLC-EG 5"	5"	9 3/4"	7 5/16"	6 9/16"	5/8"	15/16"	1 3/16"	9/16"	2008786	3475953	20	1430
SLC-EG 6"	6"	11 1/4"	8 15/16"	7 7/16"	3/4"	1 1/16"	1 11/16"	11/16"	2008787	3475954	10	1940
SLC-EG 8"	8"	13 13/16"	11 13/16"	8 15/16"	3/4"	1 3/16"	2 11/16"	11/16"	2008788	3475955	10	2000

¹ Maximum allowable loads based on the lower of:

- Maximum safe load of the threaded hanger rod at rod temperature of 650° F per Manufacturer's Standardization Society Standard Practice 58
- Safety factor available upon request.

INSTALLATION INSTRUCTIONS

Installation instructions for use (IFU) are included with each product package. They can also be viewed or downloaded online at www.hilti.com. Because of the possibility of changes, always verify that downloaded IFU are current when used. Proper installation is critical to achieve full performance. Training is available on request. Contact Hilti Technical Services for applications and conditions not addressed in the IFU.

2.0 PRODUCTIVITY COMPONENTS

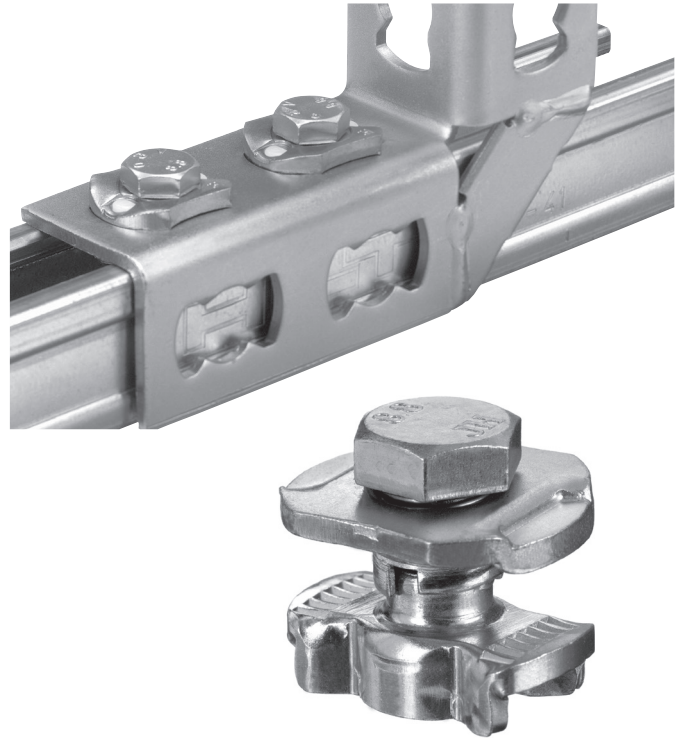
MQN PUSHBUTTON (CONNECTOR)

Product Features

- One-part fastener replaces a spring nut, bolt and washer
- Faster, easier installation

Material Specifications

Material	Carbon Steel
Finish	Electro-galvanized



Technical Information

Description	Weight/ Piece (lb)	Box Qty.	Required Installation Torque (ft-lb)	Allowable Shear Load MFMA-4 (lb)	Allowable Tension Load MFMA-4 (lb)	Item No.
MQN	0.145	50	40	370	1420	2302707

Safety factor available upon request.

INSTALLATION INSTRUCTIONS

Installation instructions for use (IFU) are included with each product package. They can also be viewed or downloaded online at www.hilti.com. Because of the possibility of changes, always verify that downloaded IFU are current when used. Proper installation is critical to achieve full performance. Training is available on request. Contact Hilti Technical Services for applications and conditions not addressed in the IFU.

2.0 PRODUCTIVITY COMPONENTS

MQM WING NUT

Product Features

- Alternative to spring nut
- Faster, easier installation
- Eliminates stocking of spring nuts for each depth of strut



Material Specifications

Material	Carbon steel
Finish	Electro-galvanized

Technical Information

Description	Connection Thread (in)	Weight/Piece (lb)	Box Qty.	Required Installation Torque (ft-lb)	Allowable Shear Load MFMA-4 (lb)	Allowable Tension Load MFMA-4 (lb)	Item No.
MQM-F 1/4"	1/4"	0.077	50	7	100	1000	2083887
MQM-F 3/8"	3/8"	0.075	50	30	160	1000	2083888
MQM-F 1/2"	1/2"	0.073	50	30	200	1000	377883

Safety factor available upon request.

INSTALLATION INSTRUCTIONS

Installation instructions for use (IFU) are included with each product package. They can also be viewed or downloaded online at www.hilti.com. Because of the possibility of changes, always verify that downloaded IFU are current when used. Proper installation is critical to achieve full performance. Training is available on request. Contact Hilti Technical Services for applications and conditions not addressed in the IFU.

2.0 PRODUCTIVITY COMPONENTS

BC BEAM CLAMP

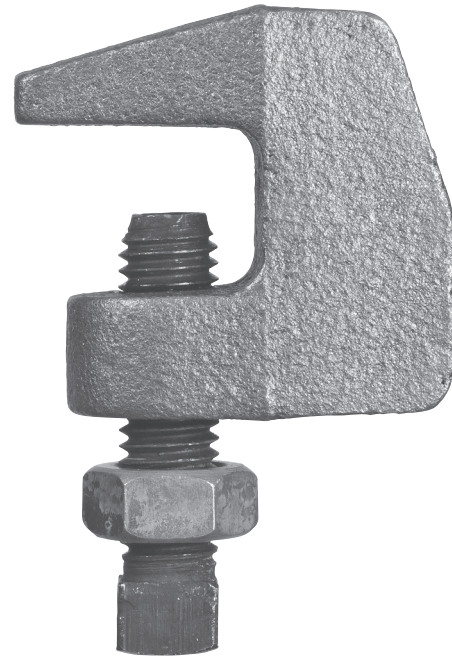
Product Features

- To secure threaded rod installations to steel beams
- No drilling or welding necessary
- Each set for an installation is completely pre-assembled and suits most usual sizes of I-beams
- Manufacturers Standardization Society MSS-SP-58 (Type 1)
- Meets Federal Specification WW-H-171E (Type 1)



Material Specifications

Material	ASTM A536 ductile iron casting with a hardened cup point set screw and locknut
Finish	Plain or electro-galvanized
Approvals/Listings	UL and cUL (Underwriters Laboratory) for 3/8" through 3/4" FM (Factory Mutual) for 3/8" and 1/2"



Note: Set screw must be tightened onto the sloped side of the I-Beam, channel or angle iron flange. Retainer Straps may be required per ASCE 7-16 Section C13.4.6

Technical Information

Description	Min. Set-Screw Torque (ft-lb) ¹	Max. Set-Screw Torque (ft-lb) ¹	Rod Size (RS)	Box Qty.	Maximum Allowable Load (lb) ¹		Max. Allowable Flange Width (in)	Item No.
					Top Flange	Bottom Flange		
BC 3/8"	5	7.5	3/8"	100	500	250	1/2"	257366
BC 1/2"	5	7.5	1/2"	50	950	760	1/2"	257367
BC 5/8"	10	15	5/8"	50	950	760	1/2"	257368
BC 3/4"	10	15	3/4"	50	950	760	1/2"	257369
BC-EG 1/4"	3.5	5	1/4"	100	250	100	1/2"	258002
BC-EG 3/8"	5	7.5	3/8"	100	500	250	1/2"	306600
BC-EG 1/2"	5	7.5	1/2"	50	950	760	1/2"	306601

¹ Safety factor available upon request.

2.0 PRODUCTIVITY COMPONENTS

BC-WM WIDE MOUTH BEAM CLAMP

Product Features

- To secure threaded rod installations to steel beams
- No drilling or welding necessary
- Each set for an installation is completely pre-assembled and suits all usual sizes of I-beams
- Manufacturers Standardization Society MSS-SP-58 (Type 1)
- Meets Federal Specification WW-H-171E (Type 1)



Material Specifications

Material	ASTM A536 ductile iron casting with a hardened cup point set screw and locknut
Finish	Plain
Approvals/Listings	UL and cUL (Underwriters Laboratory) FM (Factory Mutual)

Note: Set screw must be tightened onto the sloped side of the I-Beam, channel or angle iron flange. Retainer Straps may be required per ASCE 7-10 Section C13.4.6



Technical Information

Description	Torque (ft-lb) ¹	Rod Size (in)	Box Qty.	Maximum Allowable Load (lb) ¹		Max. Allowable Flange Width (in)	Item No.
				Top Flange	Bottom Flange		
BC-WM 3/8"	5	3/8"	50	500	250	1 1/4"	306602
BC-WM 1/2"	10	1/2"	50	950	760	1 1/4"	306603

¹ Safety factor available upon request.

2.0 PRODUCTIVITY COMPONENTS

MQT-U STRUT BEAM CLAMP

Product Features

- Beam clamp for universal use on the open or slotted side of the channel
- Faster and easier than traditional "window clamps"

Material Specifications

Material	Carbon Steel - S355 MC - DIN EN 10149-2
Finish	Electro-galvanized
Approvals/Listings	CSA Group (Hardware for the support of conduit, tubing, and cable)



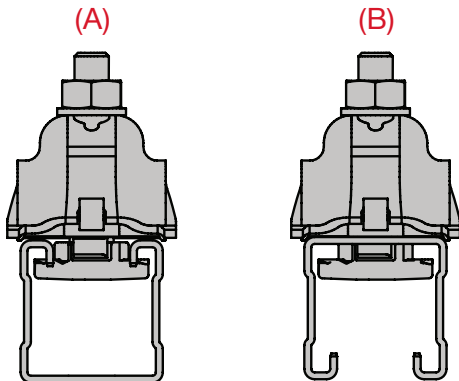
Scan for CSA approval documentation



Technical Information

Description	Orientation	Required Installation Torque (ft-lb)	Box Qty.	Allowable Tension Load MFMA-4 (lb) per pair	Allowable Tension Load MT (lb) per pair	Item No.
MQT-U	Channel Up (A)	15	10	1000	1400	2301108
	Channel Down (B)	15		1200	1400	

Safety factor available upon request.



INSTALLATION INSTRUCTIONS

Installation instructions for use (IFU) are included with each product package. They can also be viewed or downloaded online at www.hilti.com. Because of the possibility of changes, always verify that downloaded IFU are current when used. Proper installation is critical to achieve full performance. Training is available on request. Contact Hilti Technical Services for applications and conditions not addressed in the IFU.

2.0 PRODUCTIVITY COMPONENTS

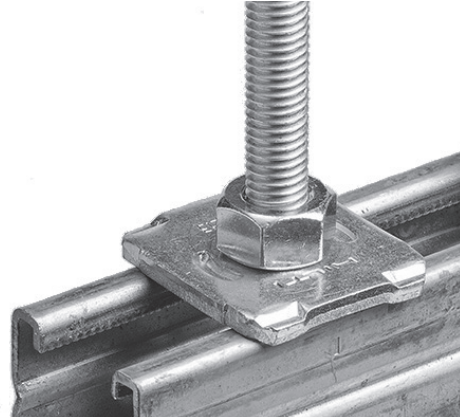
MQZ-L BASE PLATES

Product Features

- Used as heavy plate washer for strut

Material Specifications

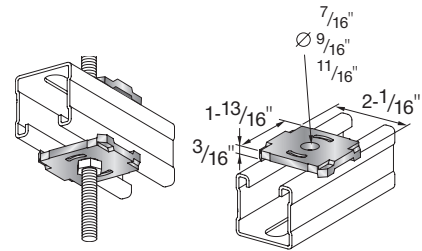
Material	Carbon Steel - S235JR - DIN EN 10025
Material thickness	3/16" (4 mm)
Finish	Electro-galvanized



Technical Information

Description	Rod Size (in)	Weight/Piece (lb)	Box Qty.	Item No.
MQZ-L 3/8"	3/8"	0.203	20	370632
MQZ-L 1/2"	1/2"	0.185	20	370633
MQZ-L 5/8"	5/8"	0.176	20	370634

Safety factor available upon request.



INSTALLATION INSTRUCTIONS

Installation instructions for use (IFU) are included with each product package. They can also be viewed or downloaded online at www.hilti.com. Because of the possibility of changes, always verify that downloaded IFU are current when used. Proper installation is critical to achieve full performance. Training is available on request. Contact Hilti Technical Services for applications and conditions not addressed in the IFU.

2.0 PRODUCTIVITY COMPONENTS

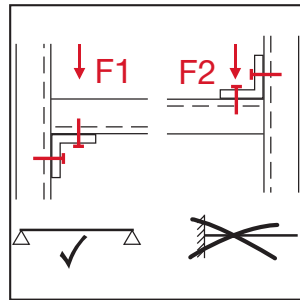
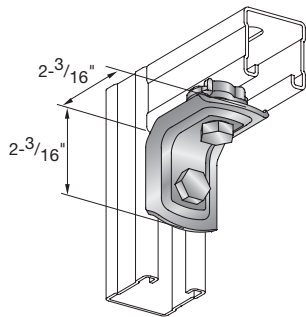
MQW-Q2 ANGLE PRE-ASSEMBLED 90°

Product Features

- Faster and easier installation helps complete jobs more quickly to reduce labor costs
- Single piece installation reduces number of parts
- Utilizes Hilti Pushbutton technology

Material Specifications

Material	Carbon Steel - Angle: DD11 - DIN EN 10111, Bolt: M10 grade 8.8 - DIN ISO 898
Material thickness	1/8" (3 mm)
Finish	Electro-galvanized



Technical Information

Description	Weight/Piece (lb)	Width Across Flats	Box Qty	Load direction	Required Installation Torque (ft-lb)	Allowable Shear Load MFMA-4 (lb)	Item No.
MQW-Q2 90° Angle	0.441	11/16"	20	F1, F2	30	200	369655

Safety factor available upon request.

INSTALLATION INSTRUCTIONS

Installation instructions for use (IFU) are included with each product package. They can also be viewed or downloaded online at www.hilti.com. Because of the possibility of changes, always verify that downloaded IFU are current when used. Proper installation is critical to achieve full performance. Training is available on request. Contact Hilti Technical Services for applications and conditions not addressed in the IFU.

2.0 PRODUCTIVITY COMPONENTS

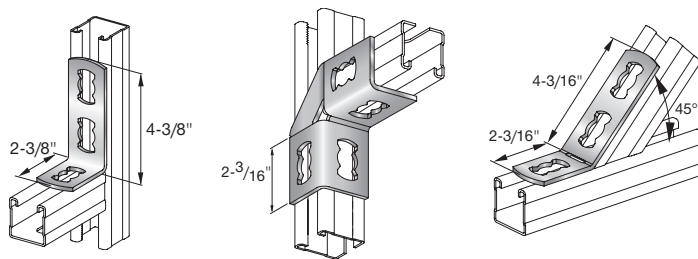
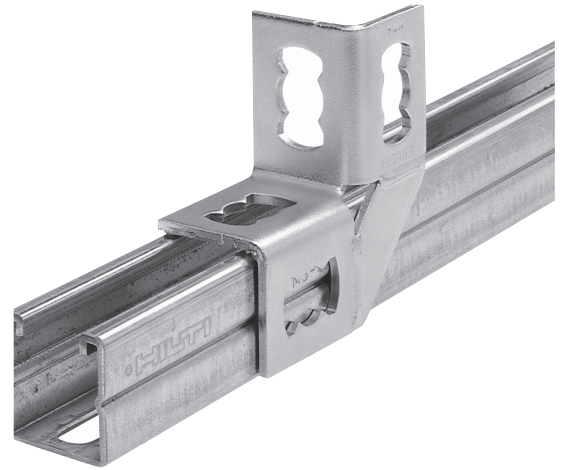
MQW ANGLES

Product Features

- Faster and easier installation helps complete jobs more quickly to reduce labor costs
- Utilizes Hilti Pushbutton technology

Material Specifications

Material	Carbon Steel - S235JR - DIN EN 10025
Material thickness	3/16" (4 mm)
Finish	Electro-galvanized



Technical Information

Description	MQN Orientation	Allowable Load MFMA-4 (lb)	Weight/Piece (lb)	Box Qty.	Item No.
MQW-3 		650	0.353	20	369656
MQW-4 		320	0.485	10	369658
		200			
		150			
		100			
MQW-3/45 		320	0.342	20	369657

Safety factor available upon request.

2.0 PRODUCTIVITY COMPONENTS

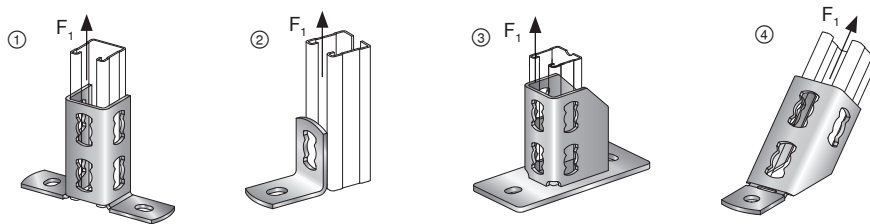
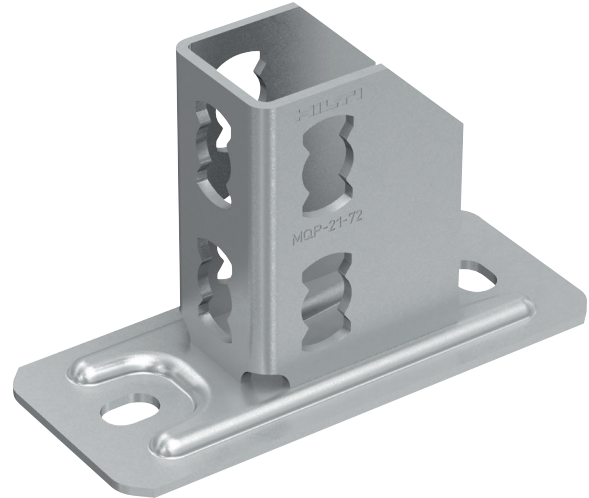
BASE CONNECTORS

Product Features

- Greater application flexibility
- More reliable and easier to use
- Utilizes Hilti Pushbutton technology

Material Specifications

Material	Carbon Steel - S235JR - DIN EN 10025
Material thickness	3/16" (4 mm)
Finish	Electro-galvanized



Technical Information

Description		Weight/Piece (lb)	Allowable Shear Load MFMA-4 (lb)	Box Qty.	Item No.
MQV-2/2D-14 wall and ceiling	①	0.966	650	10	369639
MQP-1/1 light duty	②	0.243	320	20	369646
MQP-21-72 standard duty	③	2.535	650	12	369651
MQP-45° base	④	0.772	650 (2X MQN)	10	369649
			320 (1X MQN)		

Safety factor available upon request.

INSTALLATION INSTRUCTIONS

Installation instructions for use (IFU) are included with each product package. They can also be viewed or downloaded online at www.hilti.com. Because of the possibility of changes, always verify that downloaded IFU are current when used. Proper installation is critical to achieve full performance. Training is available on request. Contact Hilti Technical Services for applications and conditions not addressed in the IFU.

2.0 PRODUCTIVITY COMPONENTS

EYE COUPLER

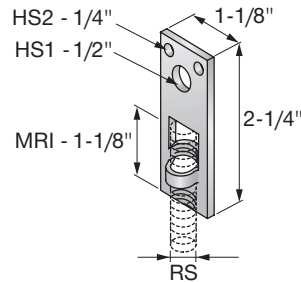
Product Features

- A structural attachment used to join hanger rod to a structure



Material Specifications

Material	Carbon Steel - S235JR - DIN EN 10025
Finish	Pre-galvanized
Approvals	UL and cUL (Underwriters Laboratory) for FM (Factory Mutual)



Technical Information

Description	Rod Size (RS) (in)	Height H (in)	Hole Diameter HS1 (in)	Hole Diameter HS2 (in)	Minimum Rod Insertion MRI (in)	Width W (in)	Allowable Tension Load (lb)	Box Qty.	Item No.
Eye coupler 3/8"	3/8"	2-1/4"	1/2"	1/4"	1-1/8"	1-1/8"	250	250	258317

Safety factor available upon request.

OFFSET EYE COUPLER

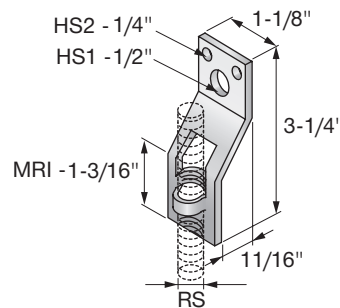
Product Features

- A structural attachment used to join hanger rod to a structure.
- Provides unlimited vertical rod adjustment



Material Specifications

Material	Carbon Steel - S235JR - DIN EN 10025
Finish	Pre-galvanized
Approvals	UL and cUL (Underwriters Laboratory) for FM (Factory Mutual)



Technical Information

Description	Rod Size (RS) (in)	Height H (in)	Hole Diameter HS1 (in)	Hole Diameter HS2 (in)	Minimum Rod Insertion MRI (in)	Width W (in)	Allowable Tension Load (lb)	Box Qty.	Item No.
Offset Eye Coupler 3/8"	3/8"	3-1/8"	1/2"	1/4"	1-3/16"	1-1/8"	250	250	258318

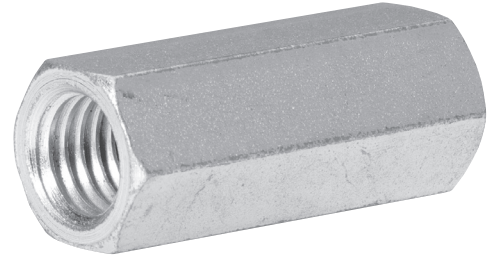
Safety factor available upon request.

2.0 PRODUCTIVITY COMPONENTS

ROD COUPLERS

Material Specifications

Material	Carbon Steel - S235JR - DIN EN 10025
Finish	Electro-galvanized
Thread	Class A fit; Class B thread



Technical Information

Description	Length (in)	Width Across Flats	Tension Load (lb)	MSS-SP-58 ¹ Allowable Tension Load at 650°F	Box Qty.	Item No.
1/4" Rod Coupler	7/8"	3/8"	780	300	100	411746
3/8" Rod Coupler	1-1/8"	1/2"	1750	730	50	411747
1/2" Rod Coupler	1-1/4"	5/8"	3110	1350	50	411748
5/8" Rod Coupler	2-1/8"	13/16"	4860	2160	50	411749
3/4" Rod Coupler	2-1/4"	1"	6700	3230	25	411750

¹ Per MSS-SP-58-2002, the ultimate tensile loads are based on a tensile stress of 50,000 psi multiplied by the threaded rod root area based on coarse thread UNC. Safety factor available upon request.



In the US:

Hilti, Inc.
7250 Dallas Parkway, Suite 1000, Plano, TX 75024
Customer Service: 1-800-879-8000
en español: 1-800-879-5000
Fax: 1-800-879-7000

www.hilti.com

Hilti is an equal opportunity employer.
Hilti is a registered trademark of Hilti Corp.
©Copyright 2022 by Hilti, Inc.

In Canada:

Hilti (Canada) Corporation
2201 Bristol Circle
Oakville ON | L6H 0J8
Canada
Customer Service: 1-800-363-4458
Fax: 1-800-363-4459

www.hilti.ca



*14001 US only

The data contained in this literature was current as of the date of publication. Updates and changes may be made based on later testing. If verification is needed that the data is still current, please contact the Hilti Technical Support Specialists at 1-800-879-8000. All published load values contained in this literature represent the results of testing by Hilti or test organizations. Local base materials were used. Because of variations in materials, on-site testing is necessary to determine performance at any specific site. Laser beams represented by red lines in this publication. Printed in the United States.