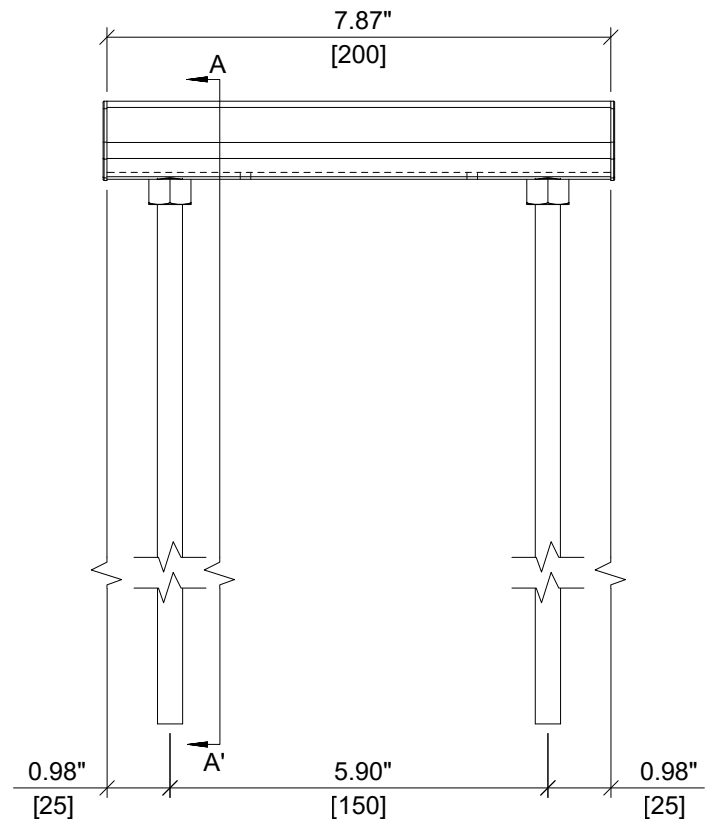
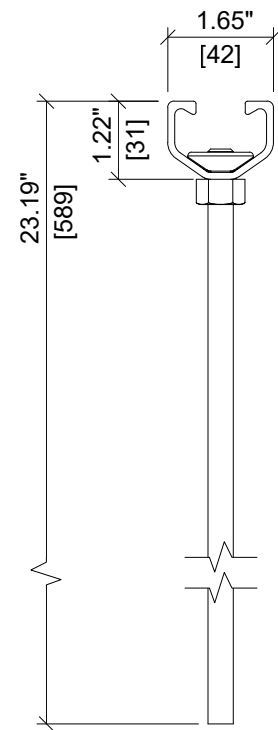


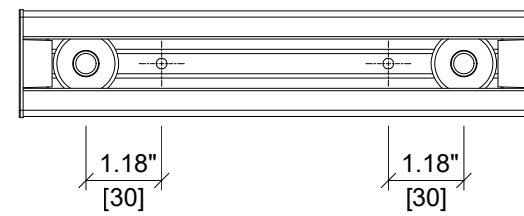
ITEM	DESCRIPTION	QUANTITY
1	CHANNEL PROFILE	1
2	RIVET CONNECTION	2
3	ROUNDED HEADED ANCHOR	2
4	END CAP	2
5	TEAR OUT BAND	1
6	FILLER FOAM	1



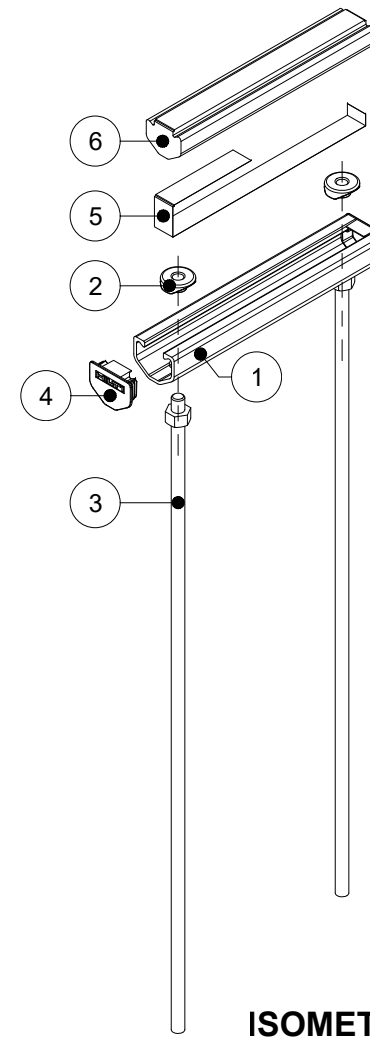
ELEVATION VIEW



SECTION A-A'



PLAN VIEW



ISOMETRIC VIEW

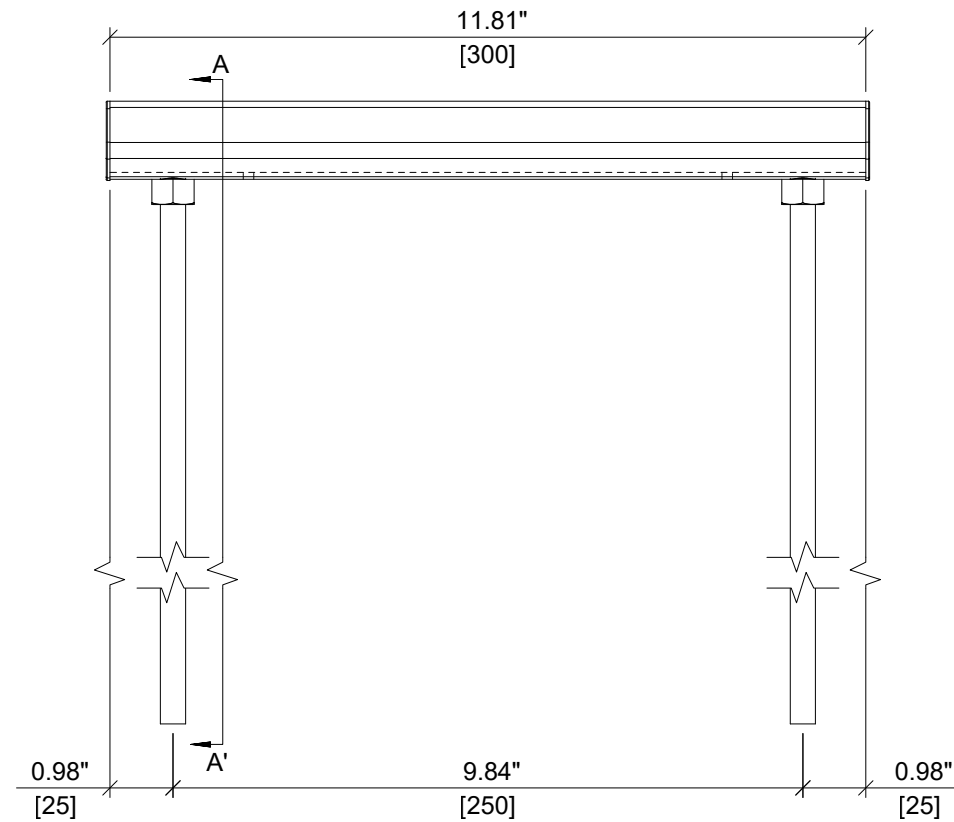


ITEM NUMBER: 2353752	CHANNEL LIP: SMOOTH
--------------------------------	-------------------------------

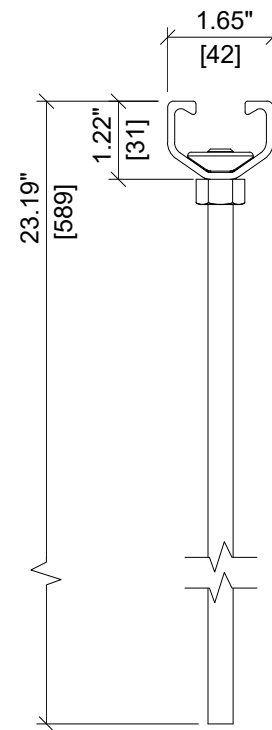
ITEM DESCRIPTION:
HAC-V 50 589/200 F Rebar XTS



ITEM	DESCRIPTION	QUANTITY
1	CHANNEL PROFILE	1
2	RIVET CONNECTION	2
3	ROUNDED HEADED ANCHOR	2
4	END CAP	2
5	TEAR OUT BAND	1
6	FILLER FOAM	1



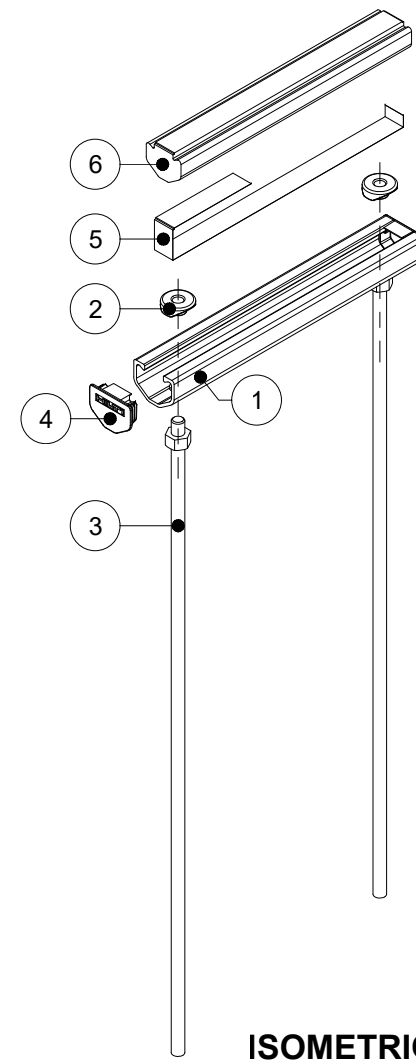
ELEVATION VIEW



SECTION A-A'



PLAN VIEW



ISOMETRIC VIEW

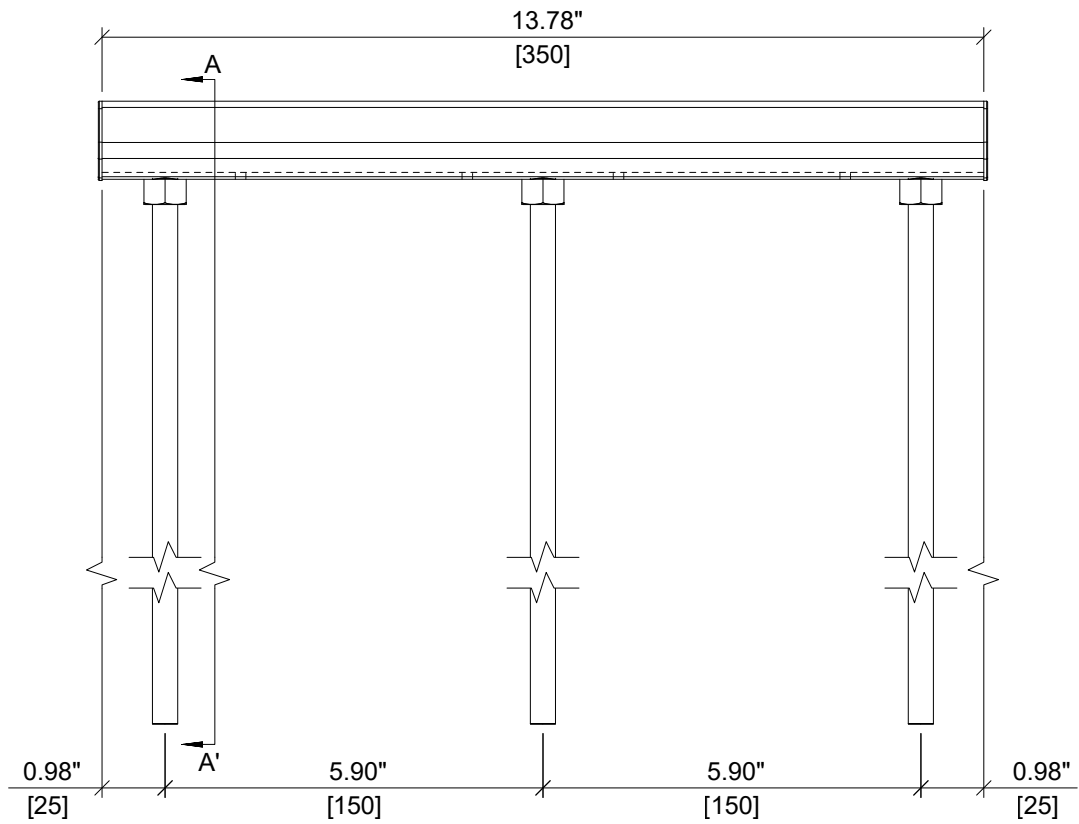


ITEM NUMBER: 2353753	CHANNEL LIP: SMOOTH
--------------------------------	-------------------------------

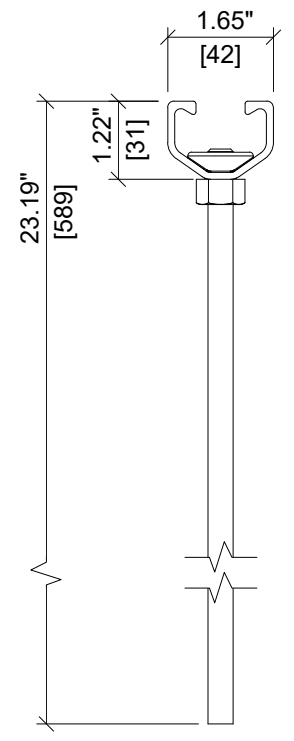
ITEM DESCRIPTION:
HAC-V 50 589/300 F Rebar XTS



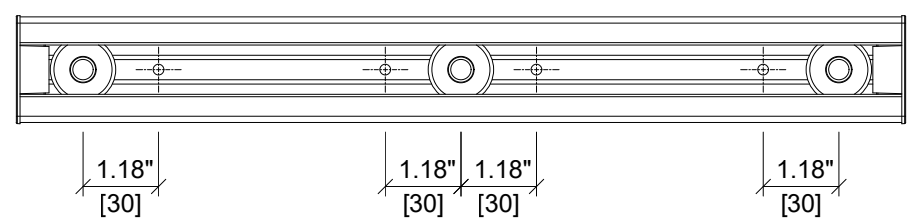
ITEM	DESCRIPTION	QUANTITY
1	CHANNEL PROFILE	1
2	RIVET CONNECTION	3
3	ROUNDED HEADED ANCHOR	3
4	END CAP	2
5	TEAR OUT BAND	1
6	FILLER FOAM	1



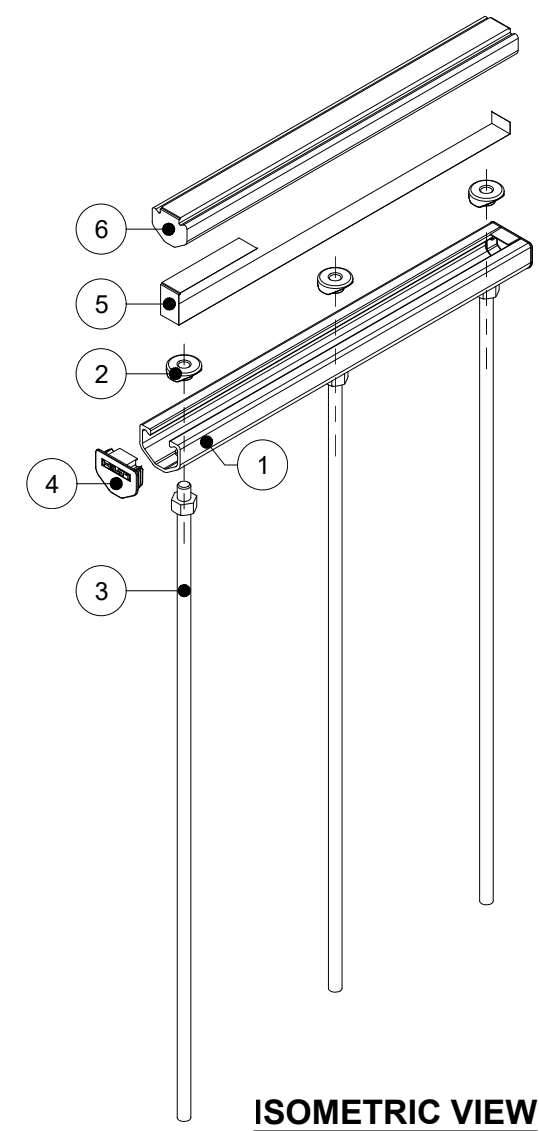
ELEVATION VIEW



SECTION A-A'



PLAN VIEW

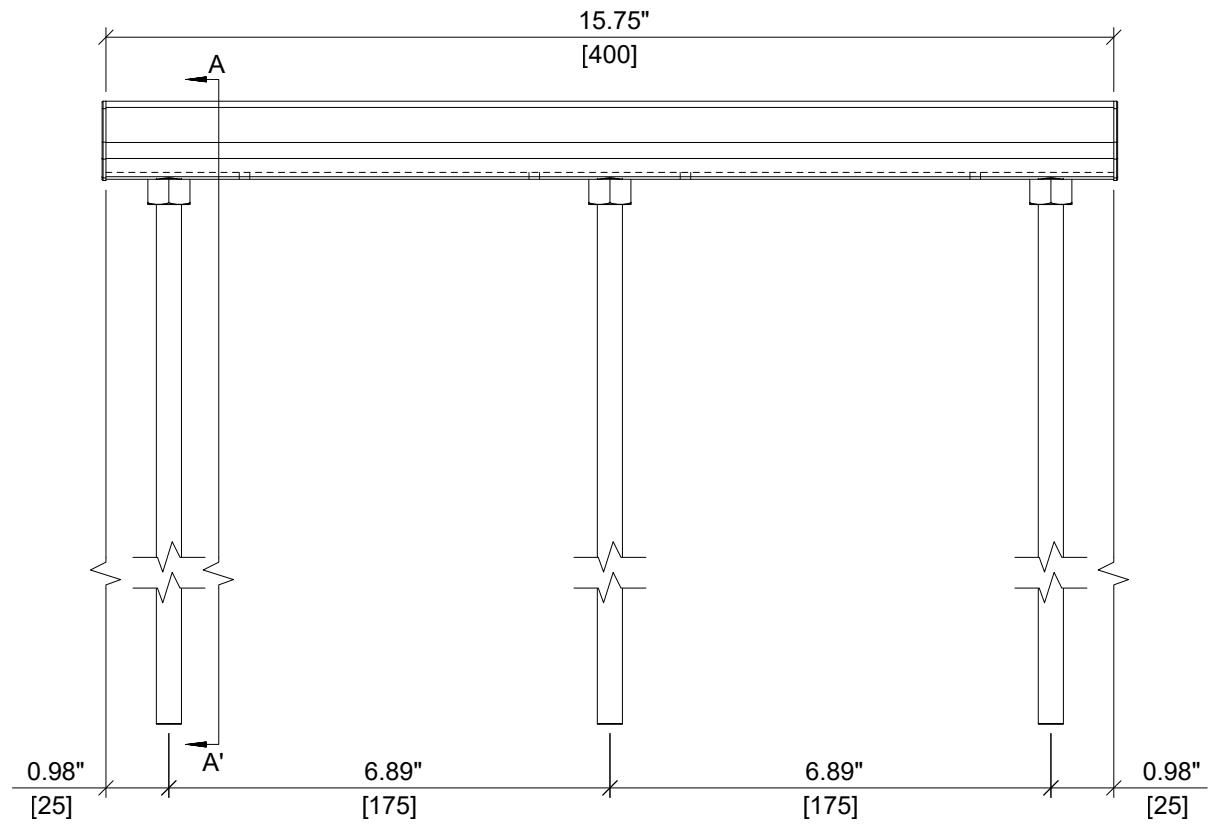


ISOMETRIC VIEW

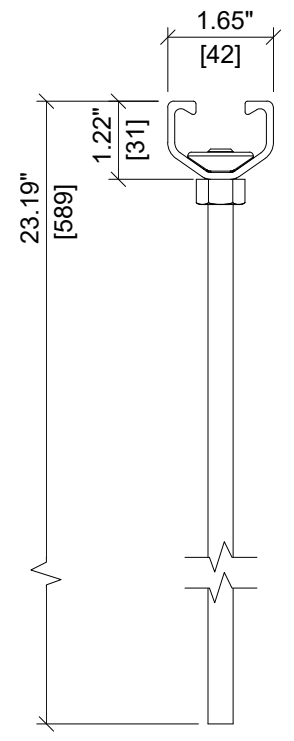


ITEM NUMBER: 2353754	CHANNEL LIP: SMOOTH
ITEM DESCRIPTION: HAC-V 50 589/350 F Rebar XTS	

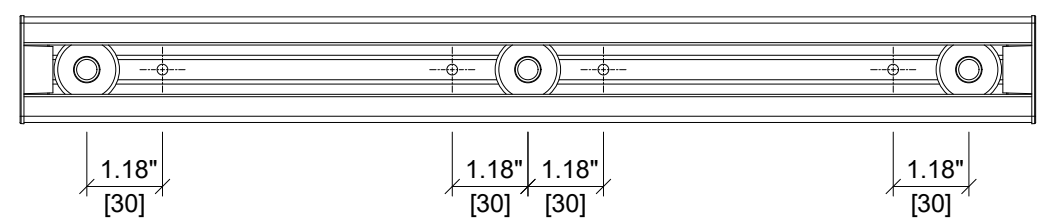
ITEM	DESCRIPTION	QUANTITY
1	CHANNEL PROFILE	1
2	RIVET CONNECTION	3
3	ROUNDED HEADED ANCHOR	3
4	END CAP	2
5	TEAR OUT BAND	1
6	FILLER FOAM	1



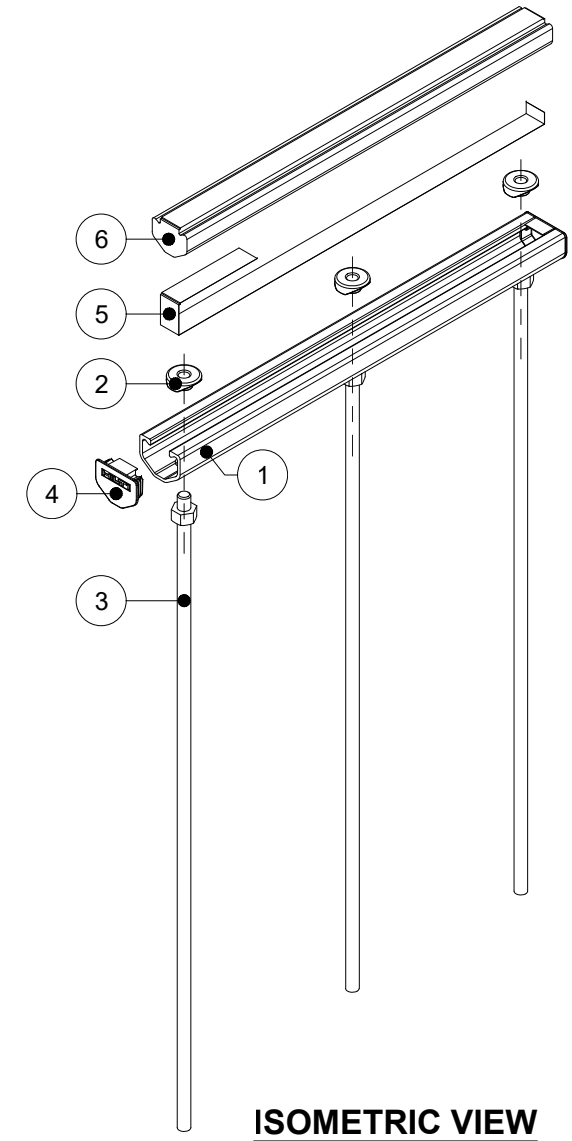
ELEVATION VIEW



SECTION A-A'



PLAN VIEW



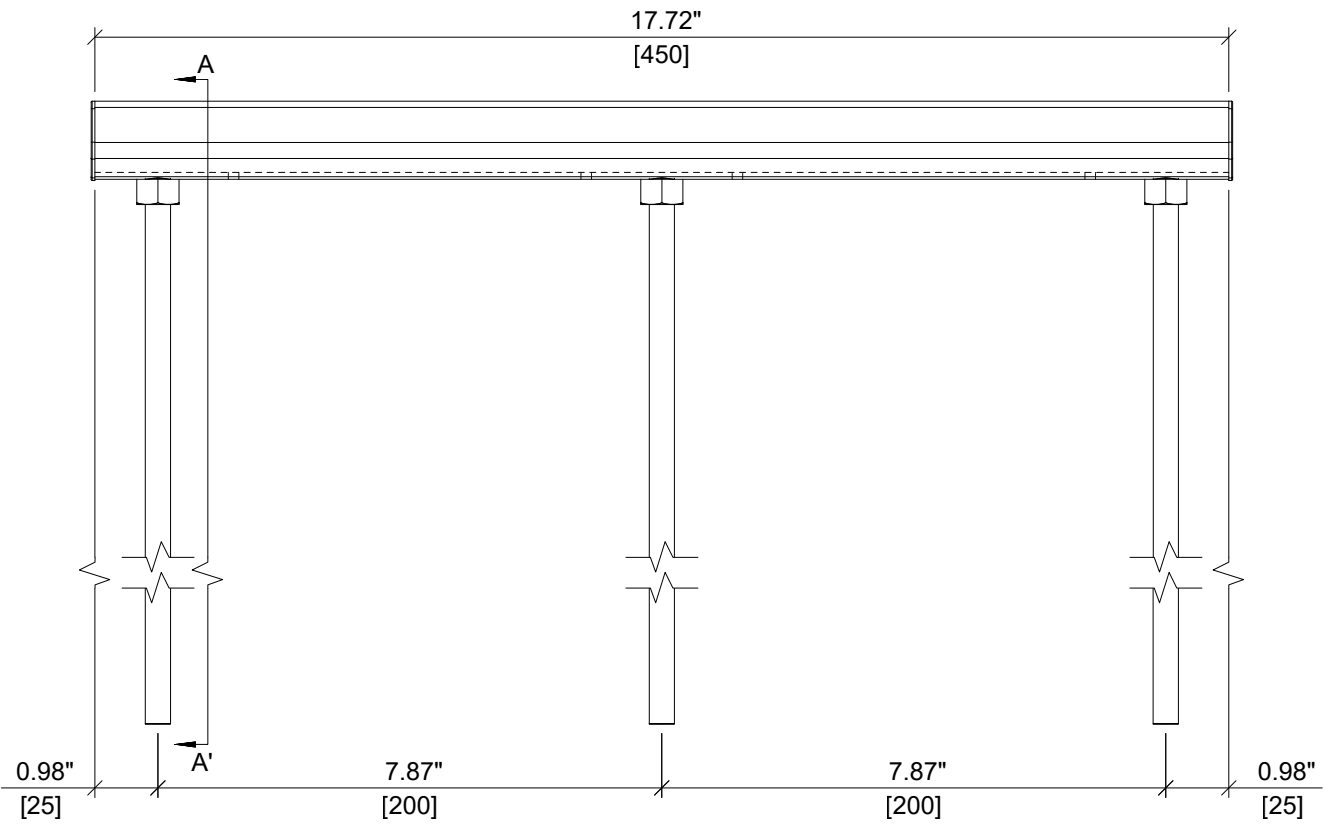
ISOMETRIC VIEW

HILTI

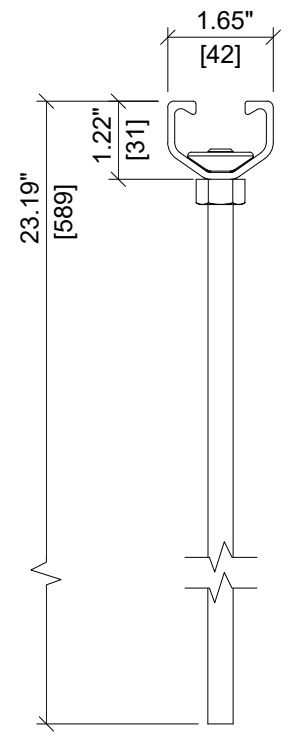
ITEM NUMBER: <div style="font-size: 18px; font-weight: bold;">2353755</div>	CHANNEL LIP: <div style="font-size: 18px; font-weight: bold;">SMOOTH</div>
ITEM DESCRIPTION: <div style="font-size: 16px; font-weight: bold;">HAC-V 50 589/400 F Rebar XTS</div>	



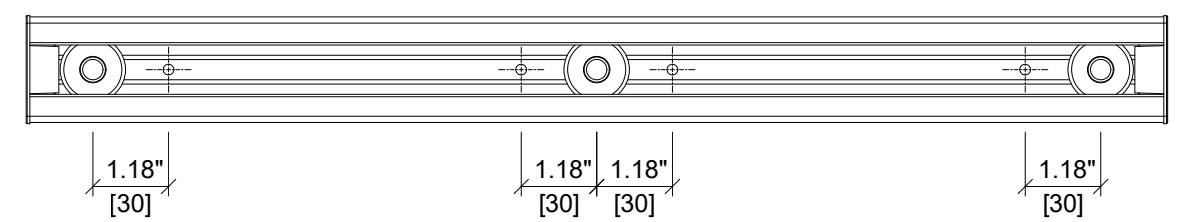
ITEM	DESCRIPTION	QUANTITY
1	CHANNEL PROFILE	1
2	RIVET CONNECTION	3
3	ROUNDED HEADED ANCHOR	3
4	END CAP	2
5	TEAR OUT BAND	1
6	FILLER FOAM	1



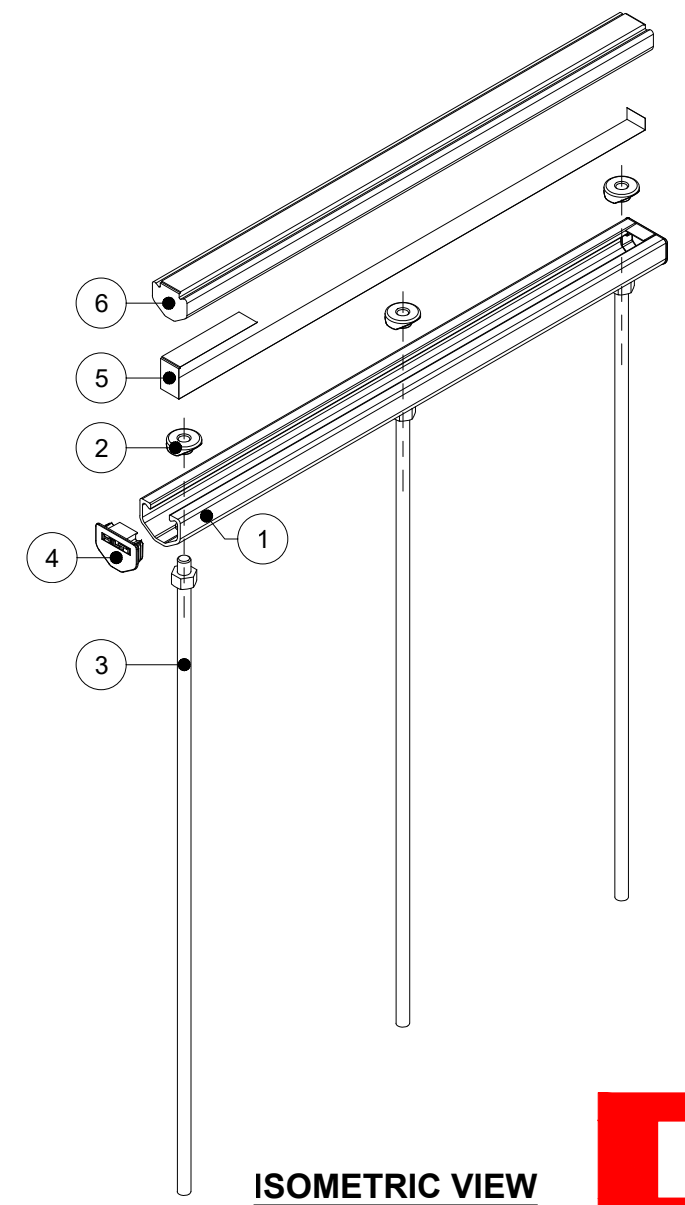
ELEVATION VIEW



SECTION A-A'



PLAN VIEW



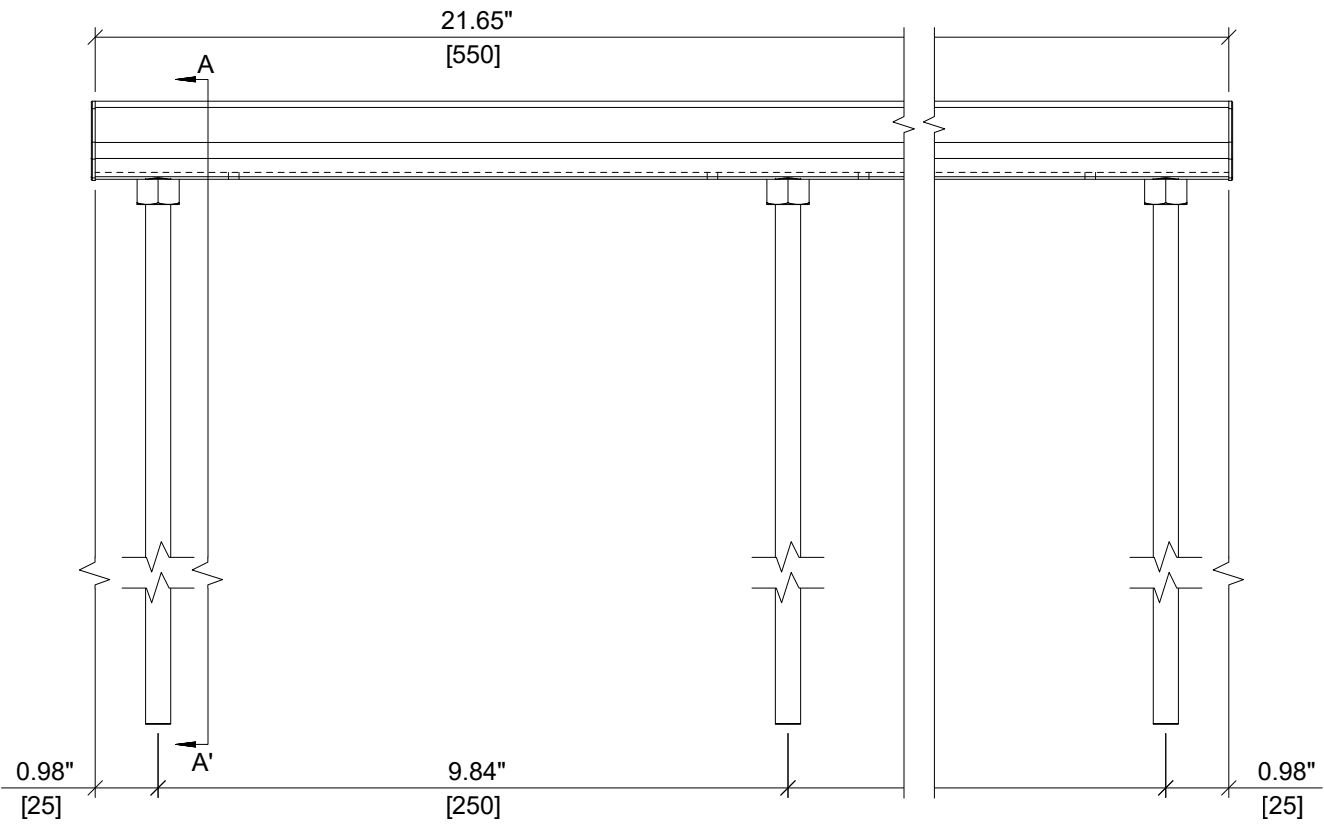
ISOMETRIC VIEW



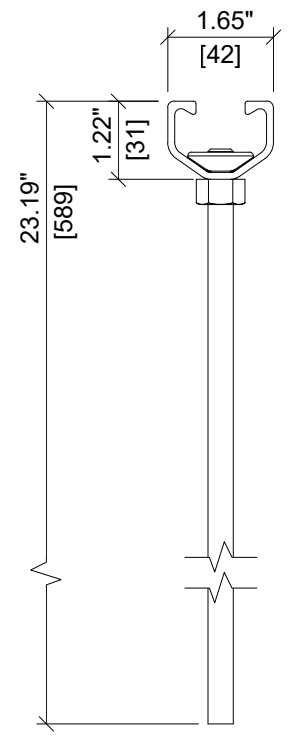
HILTI

ITEM NUMBER: <div style="font-size: 18px; font-weight: bold; text-align: center;">2353756</div>	CHANNEL LIP: <div style="font-size: 18px; font-weight: bold; text-align: center;">SMOOTH</div> <div style="text-align: right; margin-top: 5px;"> </div>
ITEM DESCRIPTION: <div style="font-size: 16px; font-weight: bold; text-align: center;">HAC-V 50 589/450 F Rebar XTS</div>	

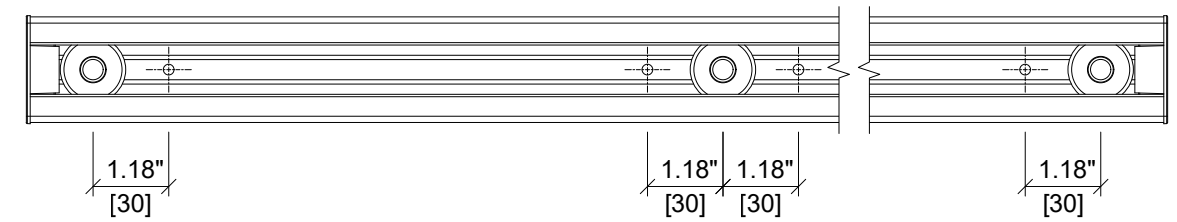
ITEM	DESCRIPTION	QUANTITY
1	CHANNEL PROFILE	1
2	RIVET CONNECTION	3
3	ROUNDED HEADED ANCHOR	3
4	END CAP	2
5	TEAR OUT BAND	1
6	FILLER FOAM	1



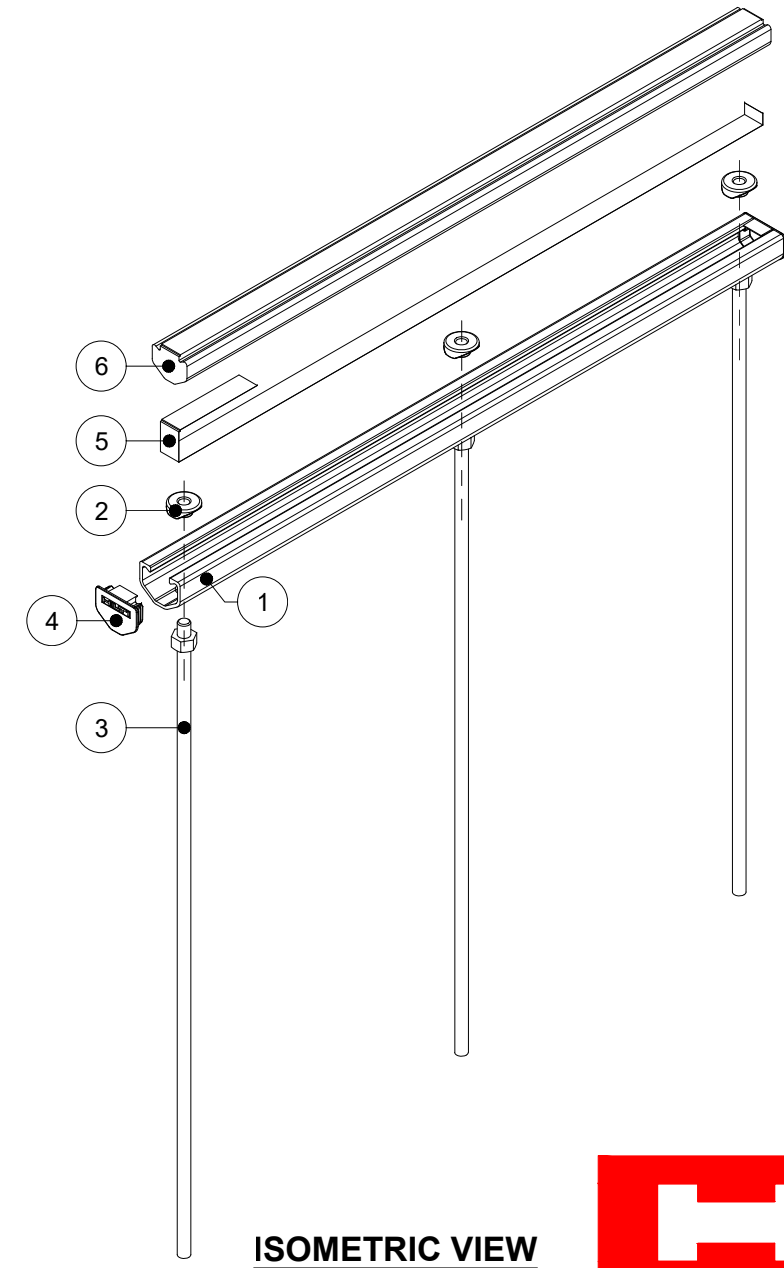
ELEVATION VIEW



SECTION A-A'



PLAN VIEW

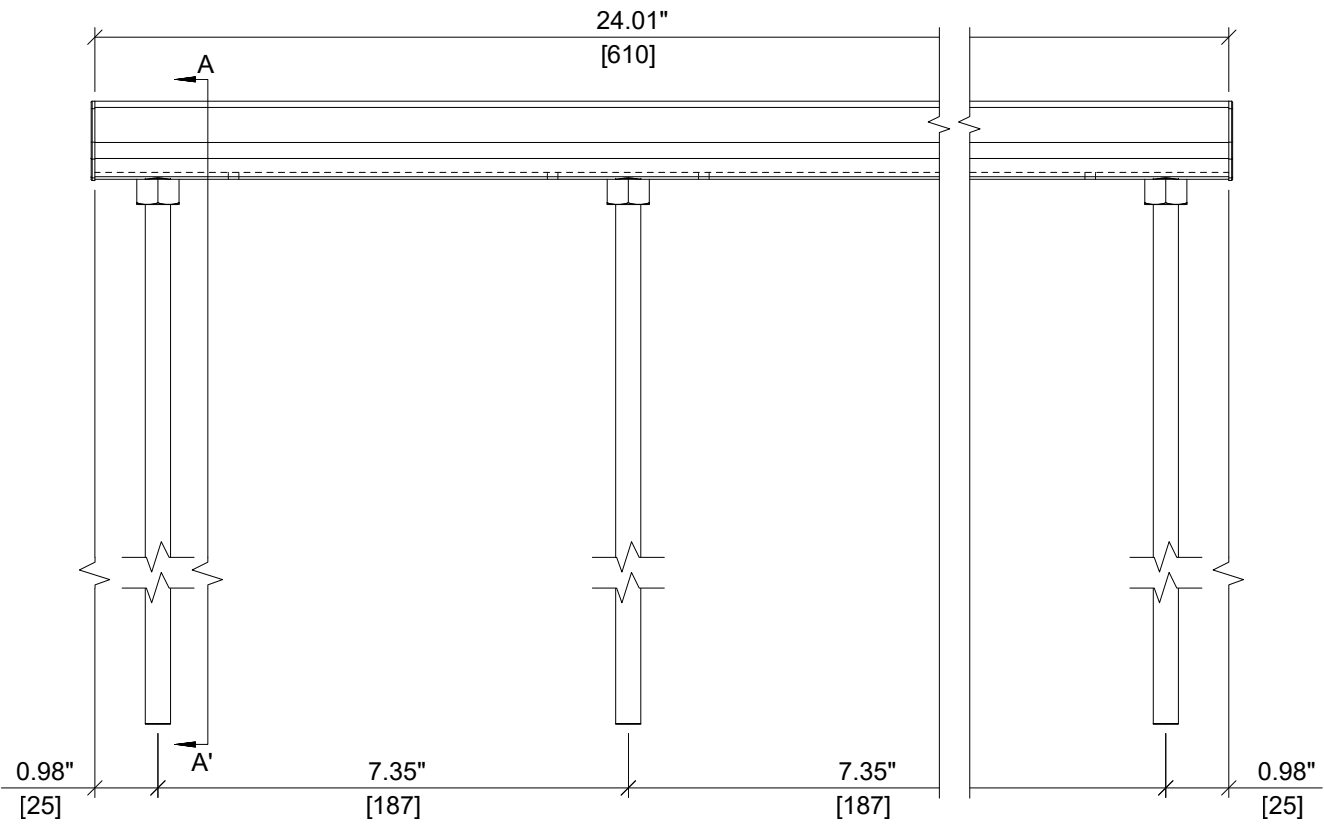


ISOMETRIC VIEW

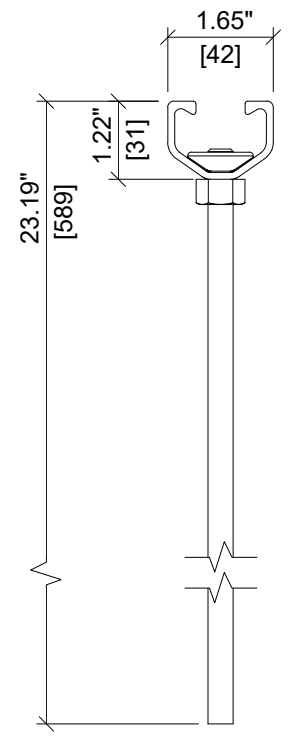


ITEM NUMBER: 2353757	CHANNEL LIP: SMOOTH
ITEM DESCRIPTION: HAC-V 50 589/550 F Rebar XTS	

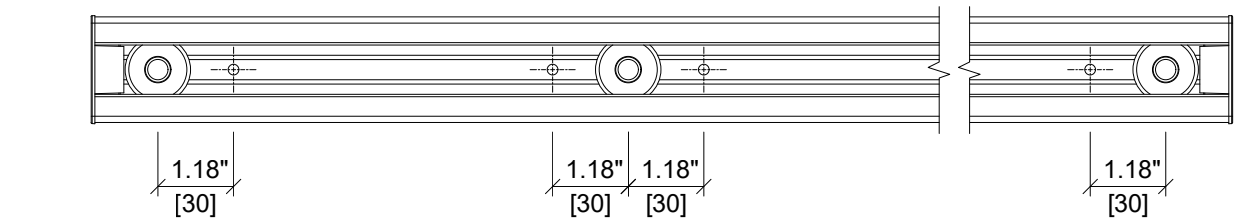
ITEM	DESCRIPTION	QUANTITY
1	CHANNEL PROFILE	1
2	RIVET CONNECTION	4
3	ROUNDED HEADED ANCHOR	4
4	END CAP	2
5	TEAR OUT BAND	2
6	FILLER FOAM	1



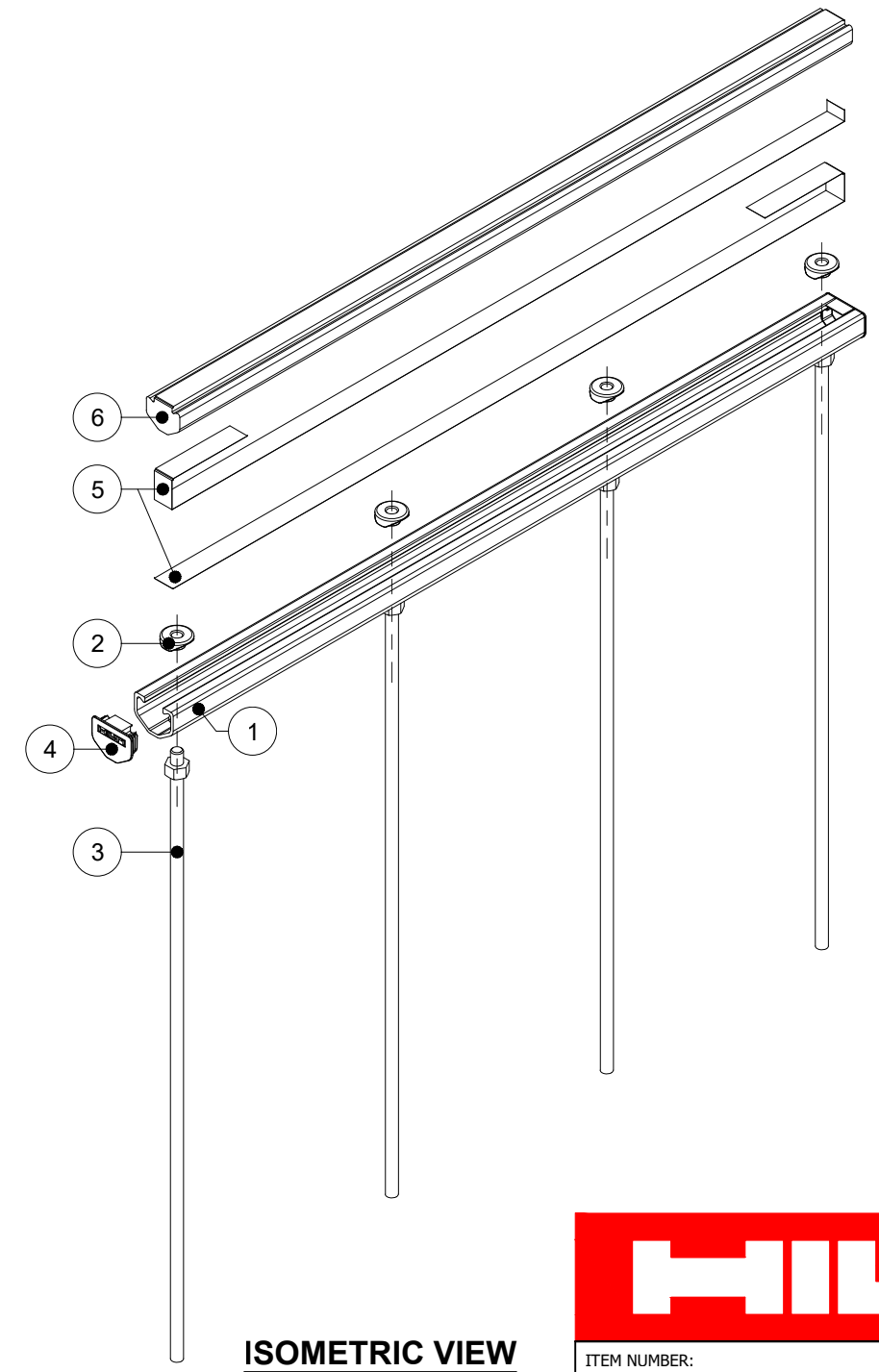
ELEVATION VIEW



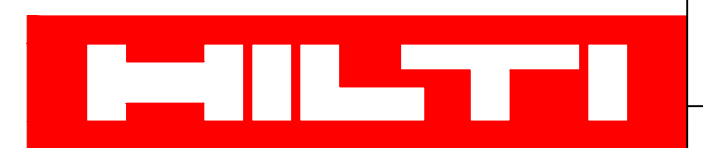
SECTION A-A'



PLAN VIEW

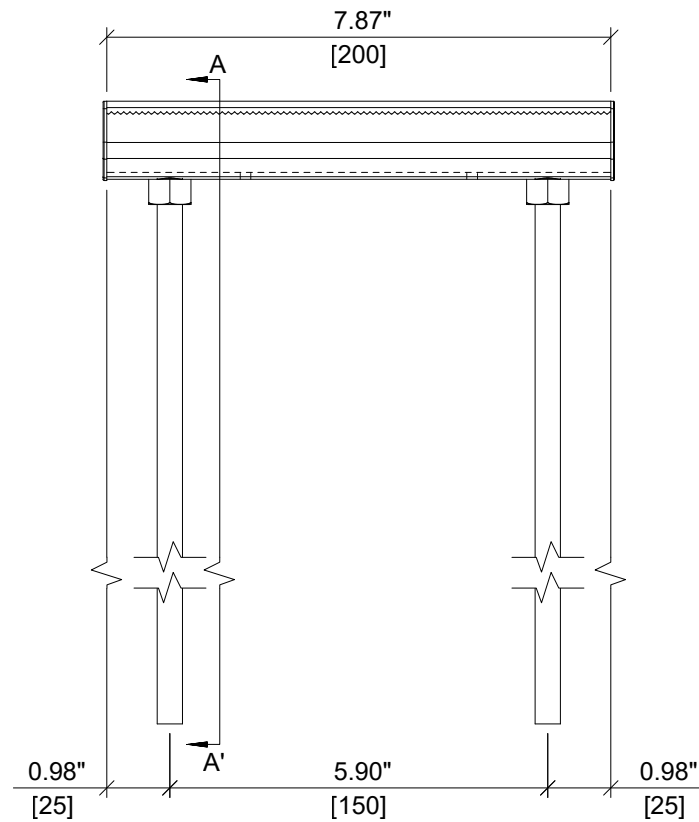


ISOMETRIC VIEW

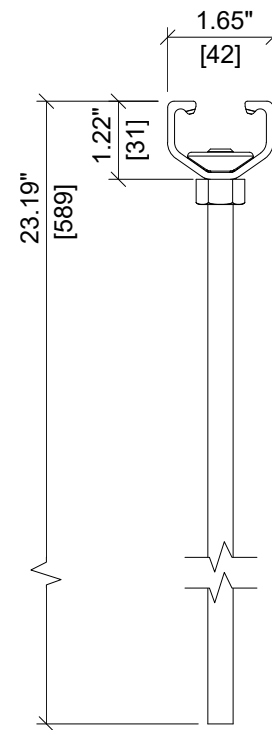


ITEM NUMBER: 2353758	CHANNEL LIP: SMOOTH
ITEM DESCRIPTION: HAC-V 50 589/610 F Rebar XTS	

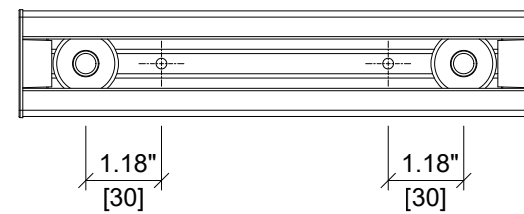
ITEM	DESCRIPTION	QUANTITY
1	CHANNEL PROFILE	1
2	RIVET CONNECTION	2
3	ROUNDED HEADED ANCHOR	2
4	END CAP	2
5	TEAR OUT BAND	1
6	FILLER FOAM	1



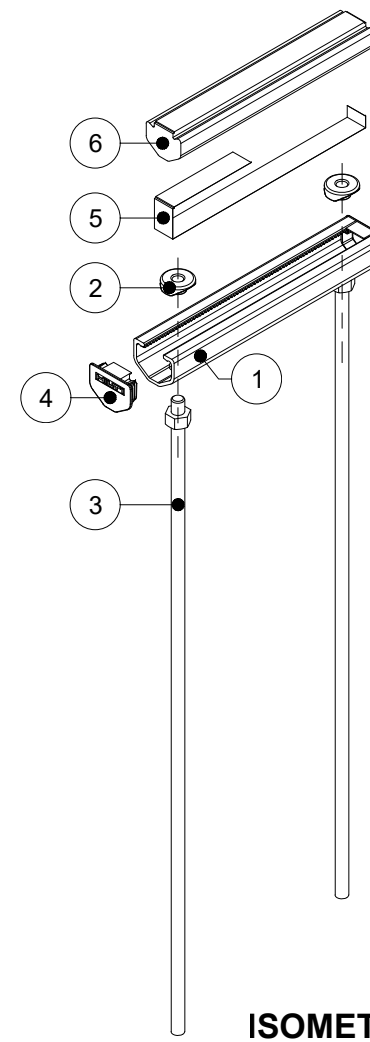
ELEVATION VIEW



SECTION A-A'

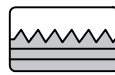


PLAN VIEW



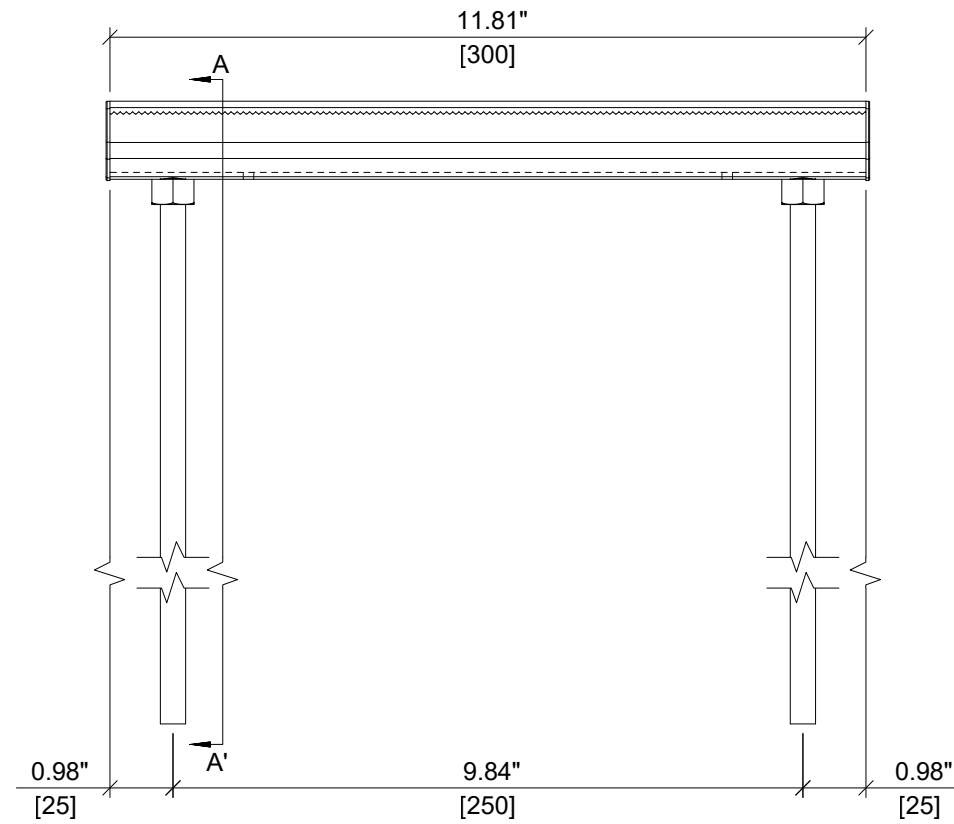
ISOMETRIC VIEW



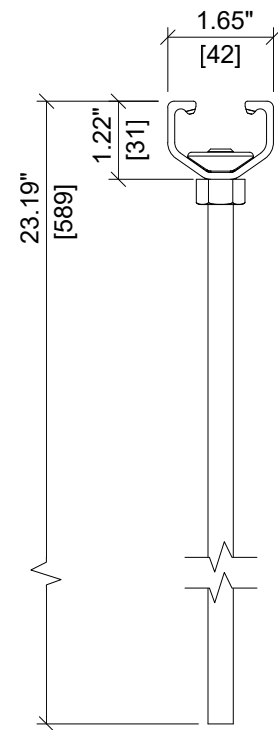
ITEM NUMBER: 2353766	CHANNEL LIP: SERRATED 
ITEM DESCRIPTION: HAC-V-T 50 589/200 F Rebar XTS	



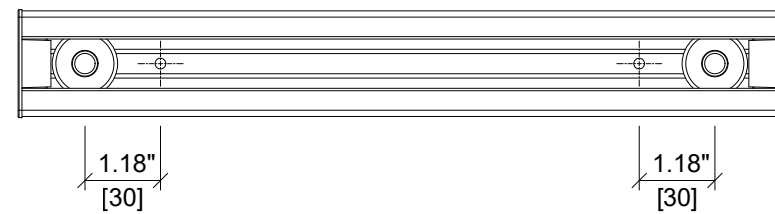
ITEM	DESCRIPTION	QUANTITY
1	CHANNEL PROFILE	1
2	RIVET CONNECTION	2
3	ROUNDED HEADED ANCHOR	2
4	END CAP	2
5	TEAR OUT BAND	1
6	FILLER FOAM	1



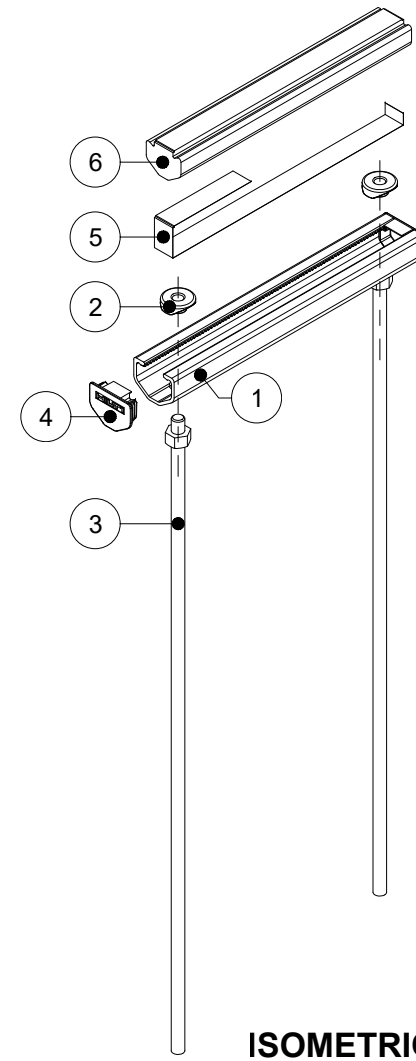
ELEVATION VIEW



SECTION A-A'



PLAN VIEW



ISOMETRIC VIEW



ITEM NUMBER:

2353767

CHANNEL LIP:

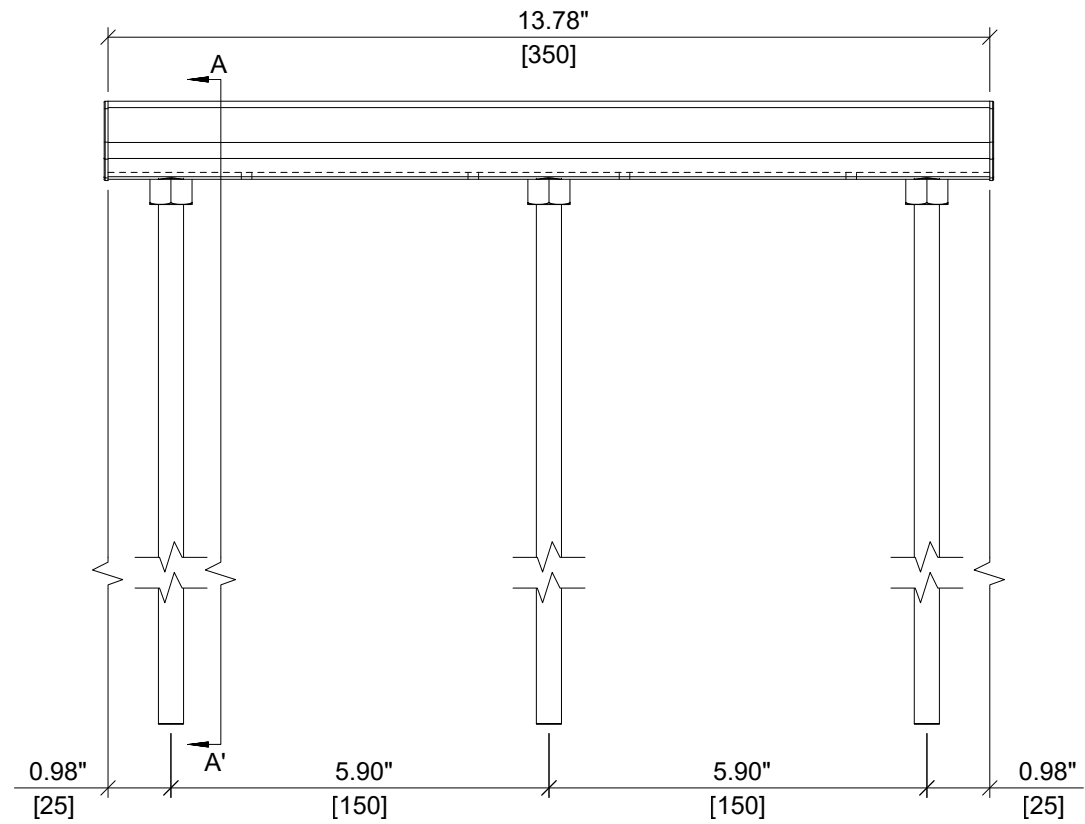
SERRATED



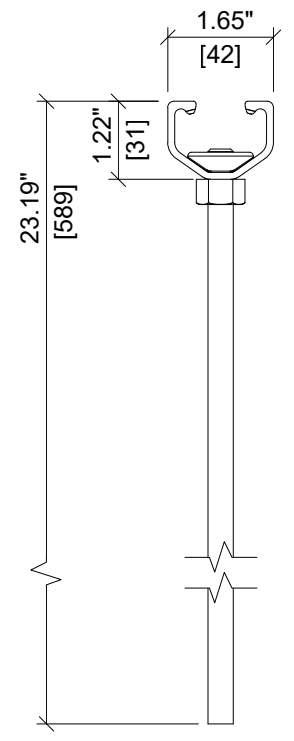
ITEM DESCRIPTION:

HAC-V-T 50 589/300 F Rebar XTS

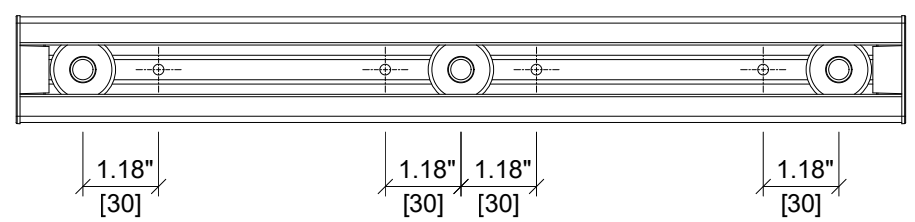
ITEM	DESCRIPTION	QUANTITY
1	CHANNEL PROFILE	1
2	RIVET CONNECTION	3
3	ROUNDED HEADED ANCHOR	3
4	END CAP	2
5	TEAR OUT BAND	1
6	FILLER FOAM	1



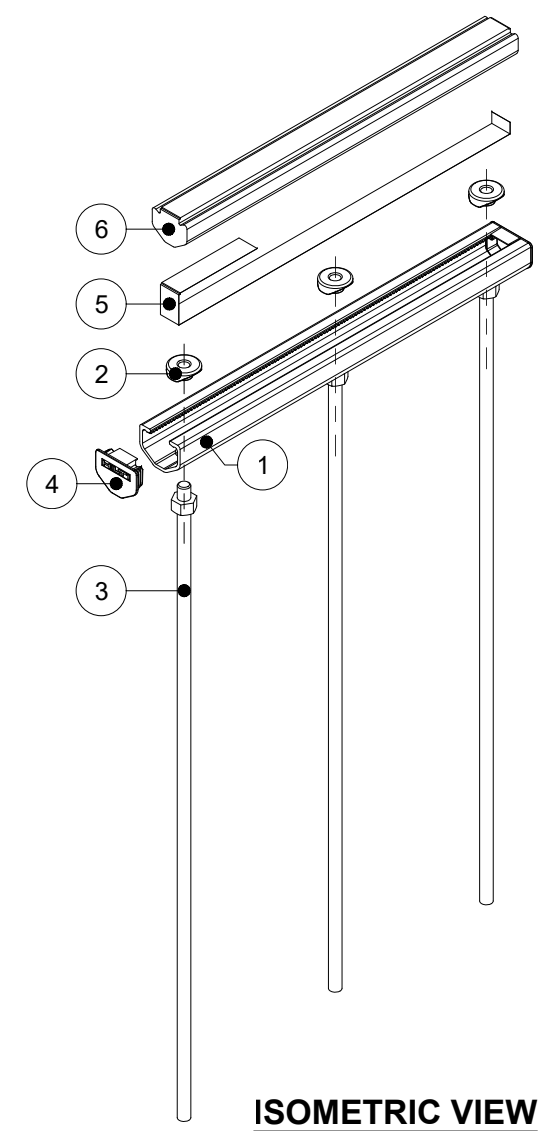
ELEVATION VIEW



SECTION A-A'

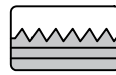


PLAN VIEW



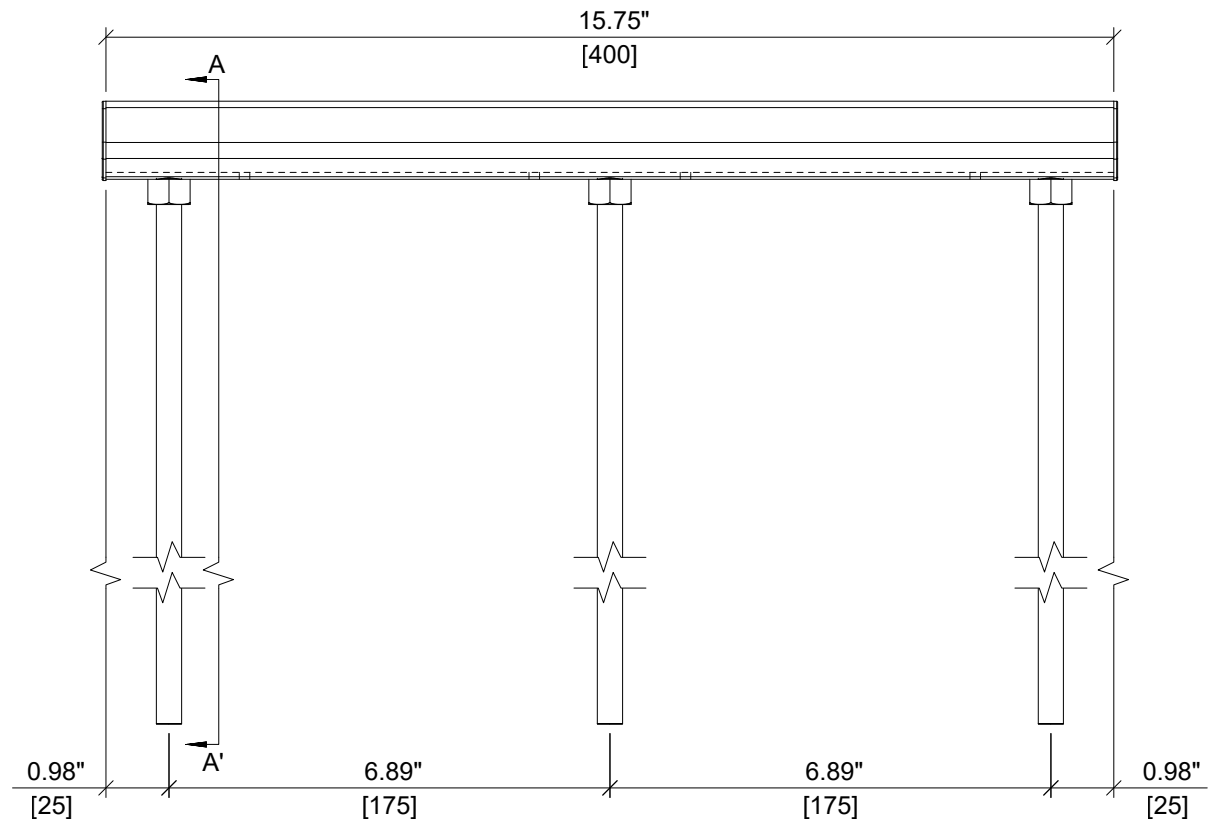
ISOMETRIC VIEW



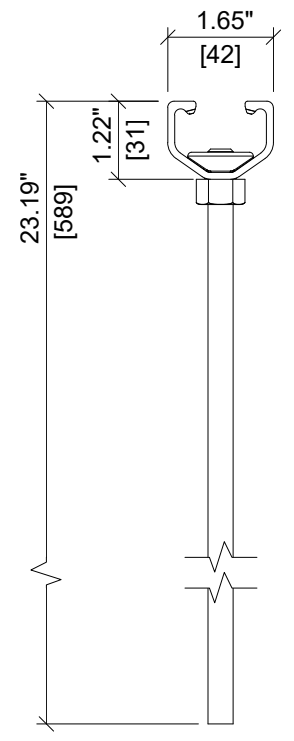
ITEM NUMBER: 2353768	CHANNEL LIP: SERRATED 
--------------------------------	---

ITEM DESCRIPTION:
HAC-V-T 50 589/350 F Rebar XTS

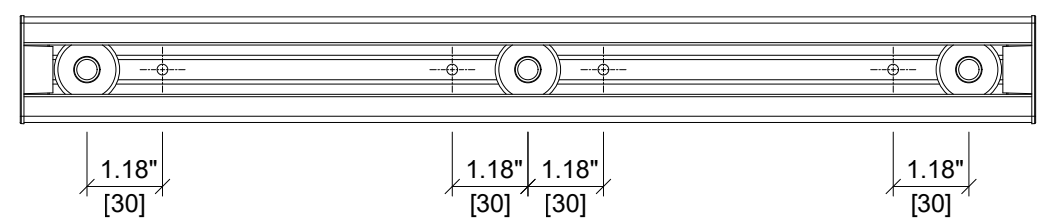
ITEM	DESCRIPTION	QUANTITY
1	CHANNEL PROFILE	1
2	RIVET CONNECTION	3
3	ROUNDED HEADED ANCHOR	3
4	END CAP	2
5	TEAR OUT BAND	1
6	FILLER FOAM	1



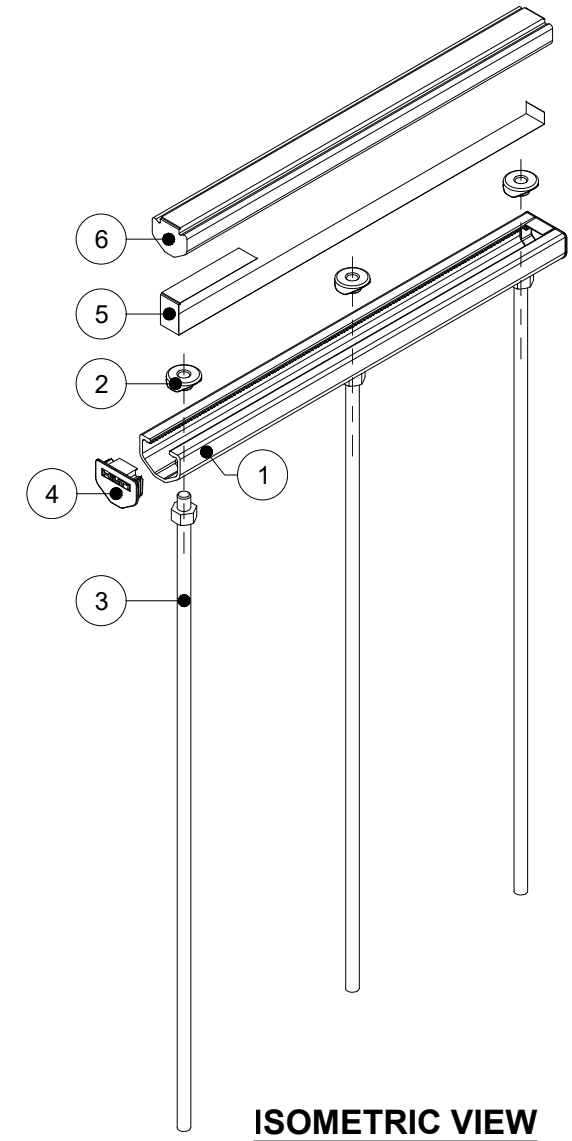
ELEVATION VIEW



SECTION A-A'

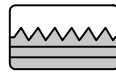


PLAN VIEW



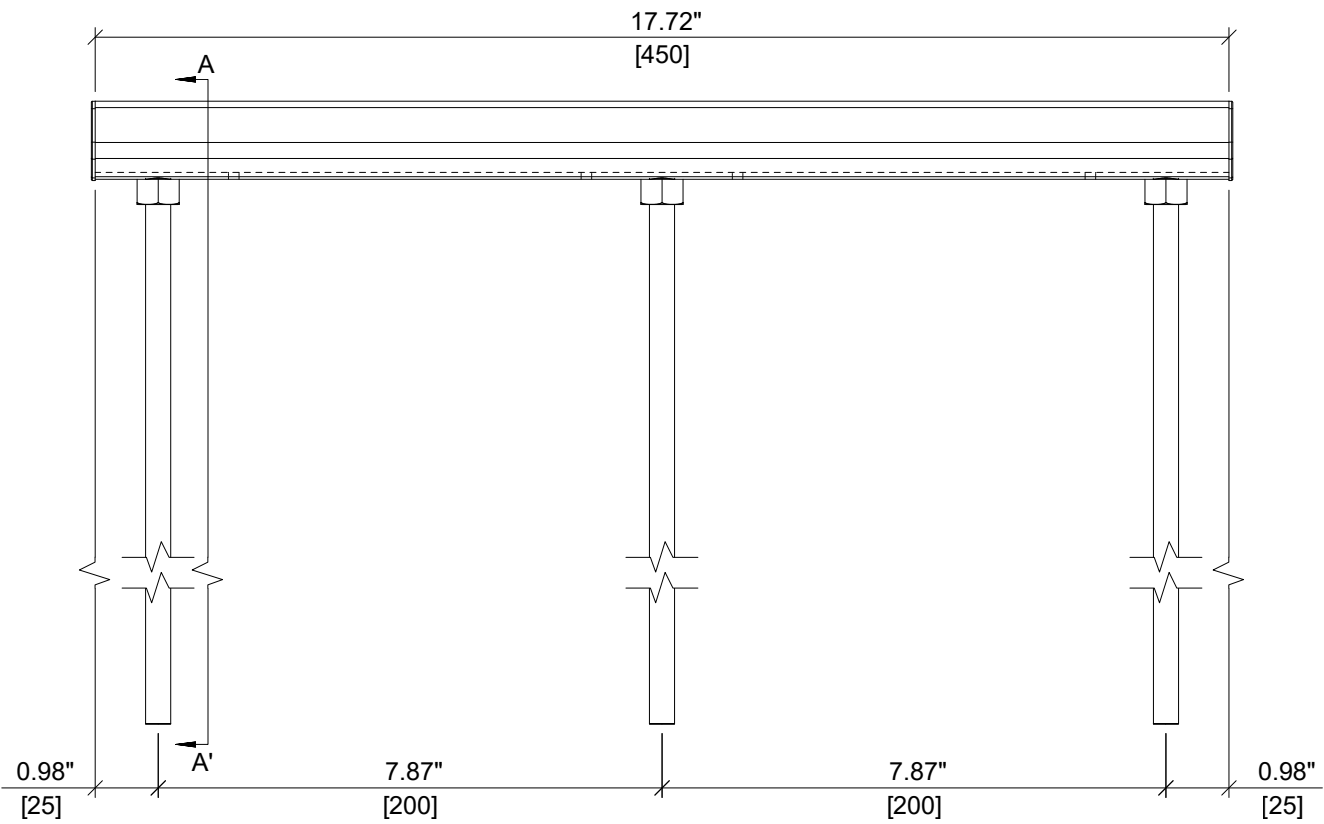
ISOMETRIC VIEW



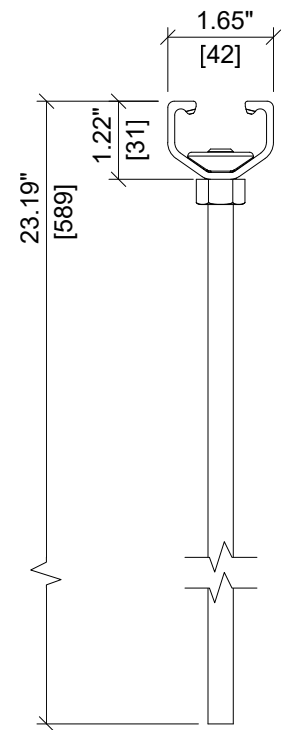
ITEM NUMBER: 2353769	CHANNEL LIP: SERRATED 
--------------------------------	---

ITEM DESCRIPTION:
HAC-V-T 50 589/400 F Rebar XTS

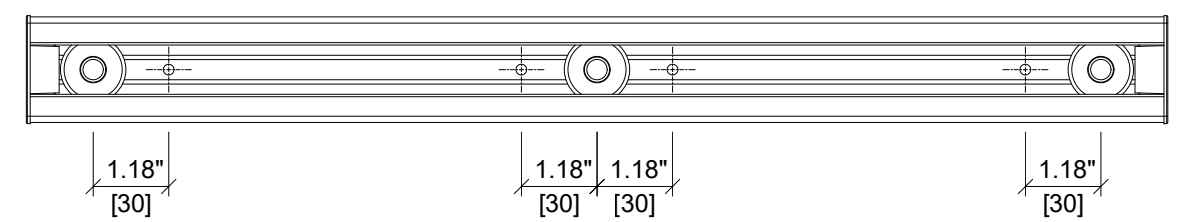
ITEM	DESCRIPTION	QUANTITY
1	CHANNEL PROFILE	1
2	RIVET CONNECTION	3
3	ROUNDED HEADED ANCHOR	3
4	END CAP	2
5	TEAR OUT BAND	1
6	FILLER FOAM	1



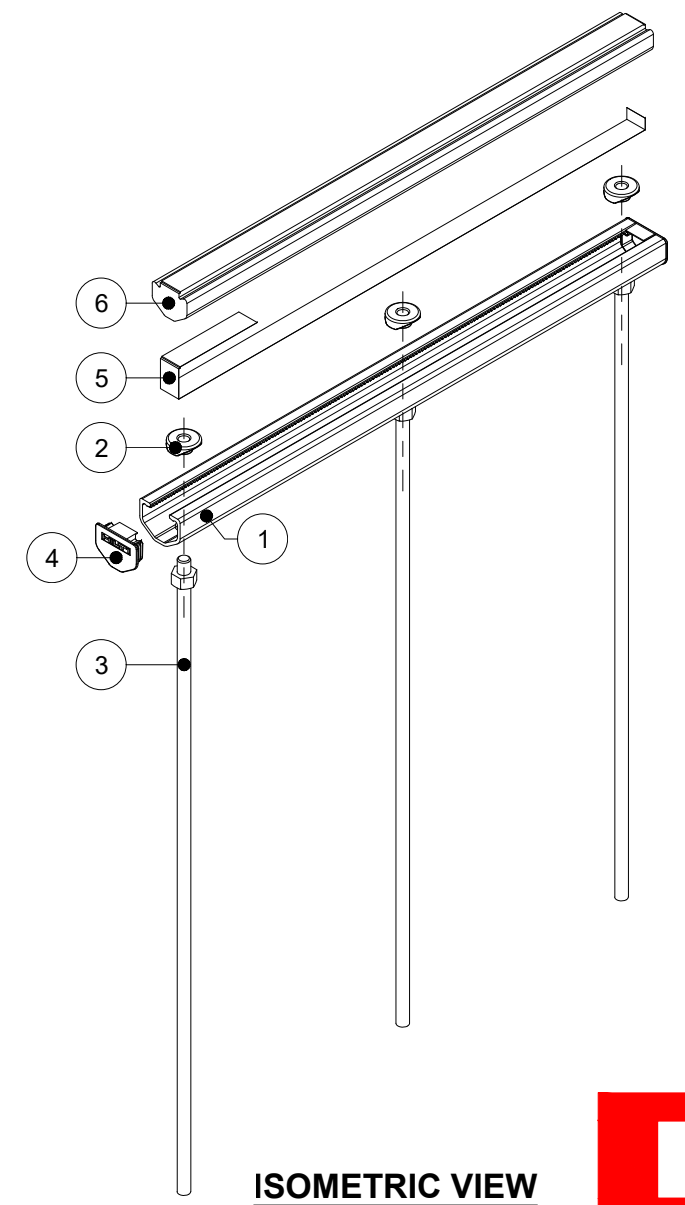
ELEVATION VIEW



SECTION A-A'



PLAN VIEW



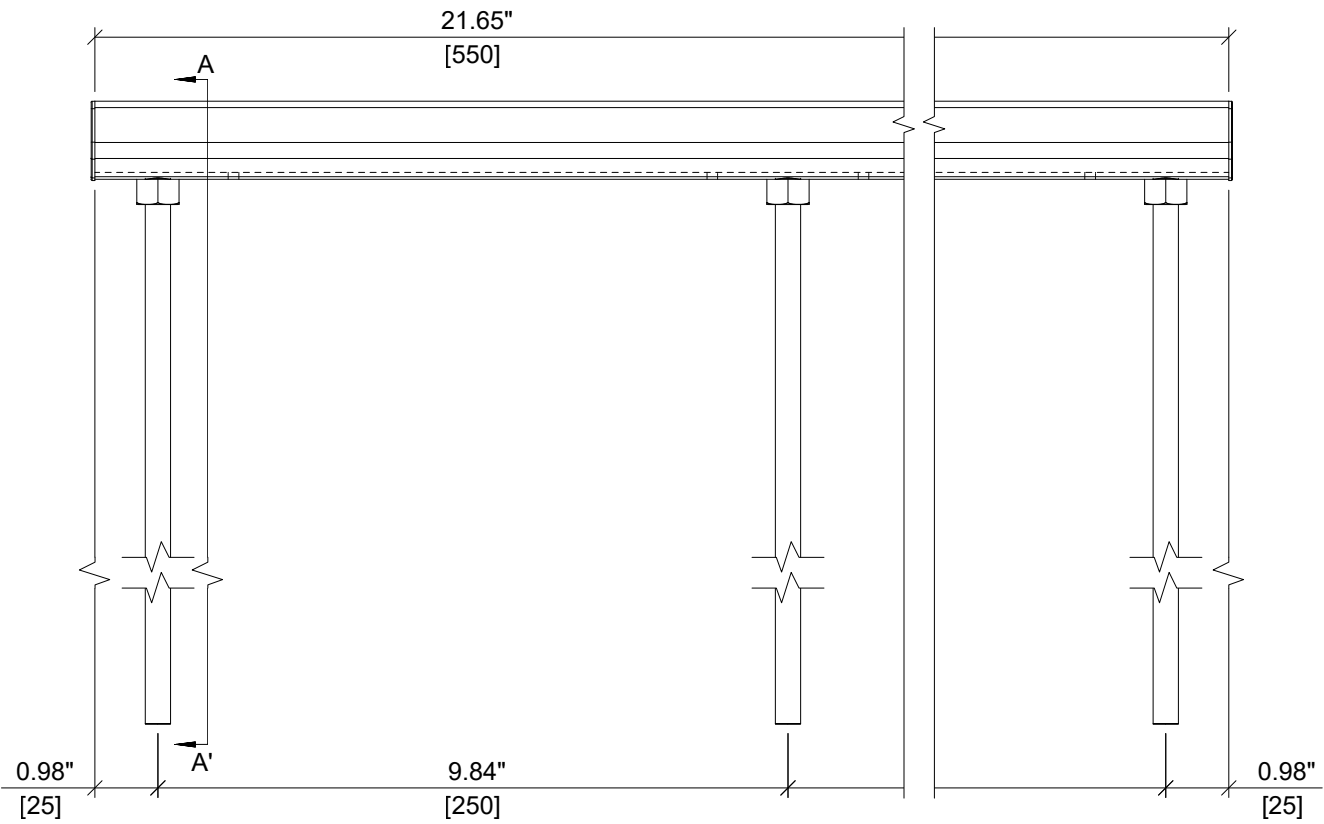
ISOMETRIC VIEW



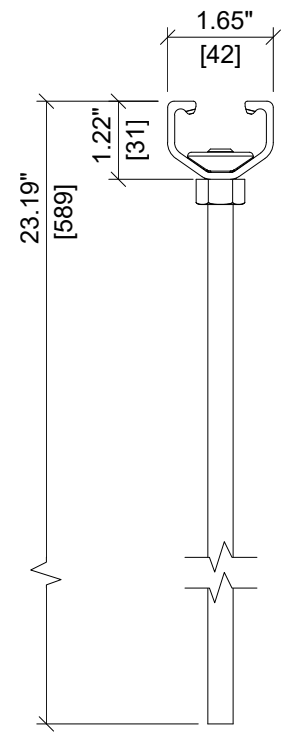
HILTI

ITEM NUMBER: <div style="font-size: 18px; font-weight: bold; text-align: center;">2353770</div>	CHANNEL LIP: <div style="font-size: 18px; font-weight: bold; text-align: center;">SERRATED</div>
ITEM DESCRIPTION: <div style="font-weight: bold; text-align: center;">HAC-V-T 50 589/450 F Rebar XTS</div>	

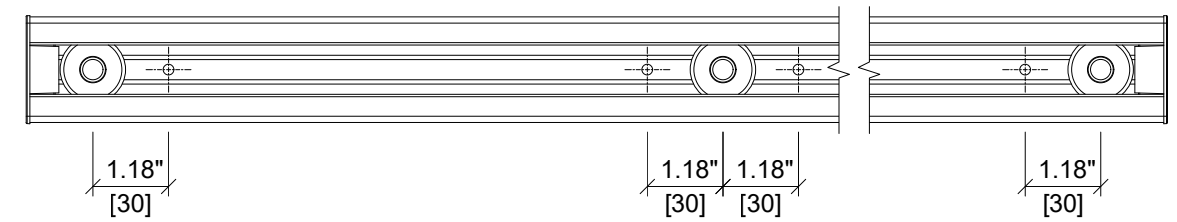
ITEM	DESCRIPTION	QUANTITY
1	CHANNEL PROFILE	1
2	RIVET CONNECTION	3
3	ROUNDED HEADED ANCHOR	3
4	END CAP	2
5	TEAR OUT BAND	1
6	FILLER FOAM	1



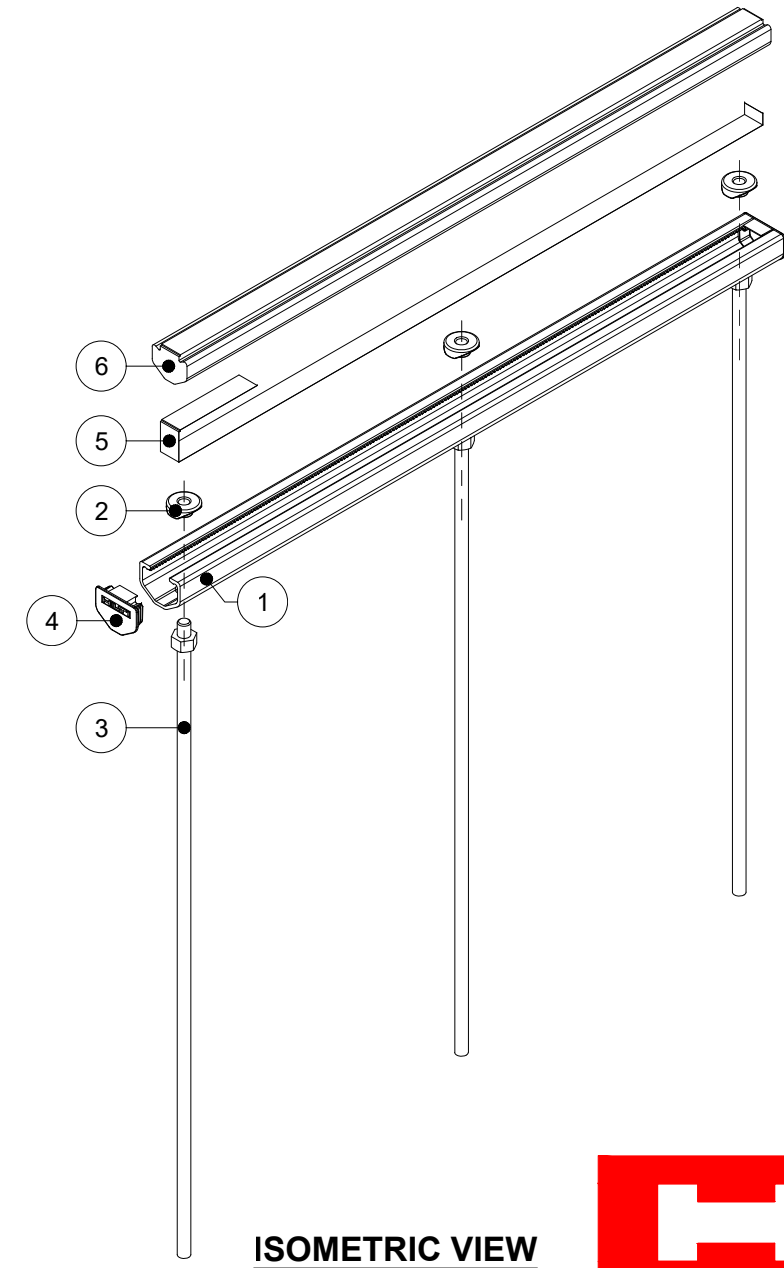
ELEVATION VIEW



SECTION A-A'



PLAN VIEW



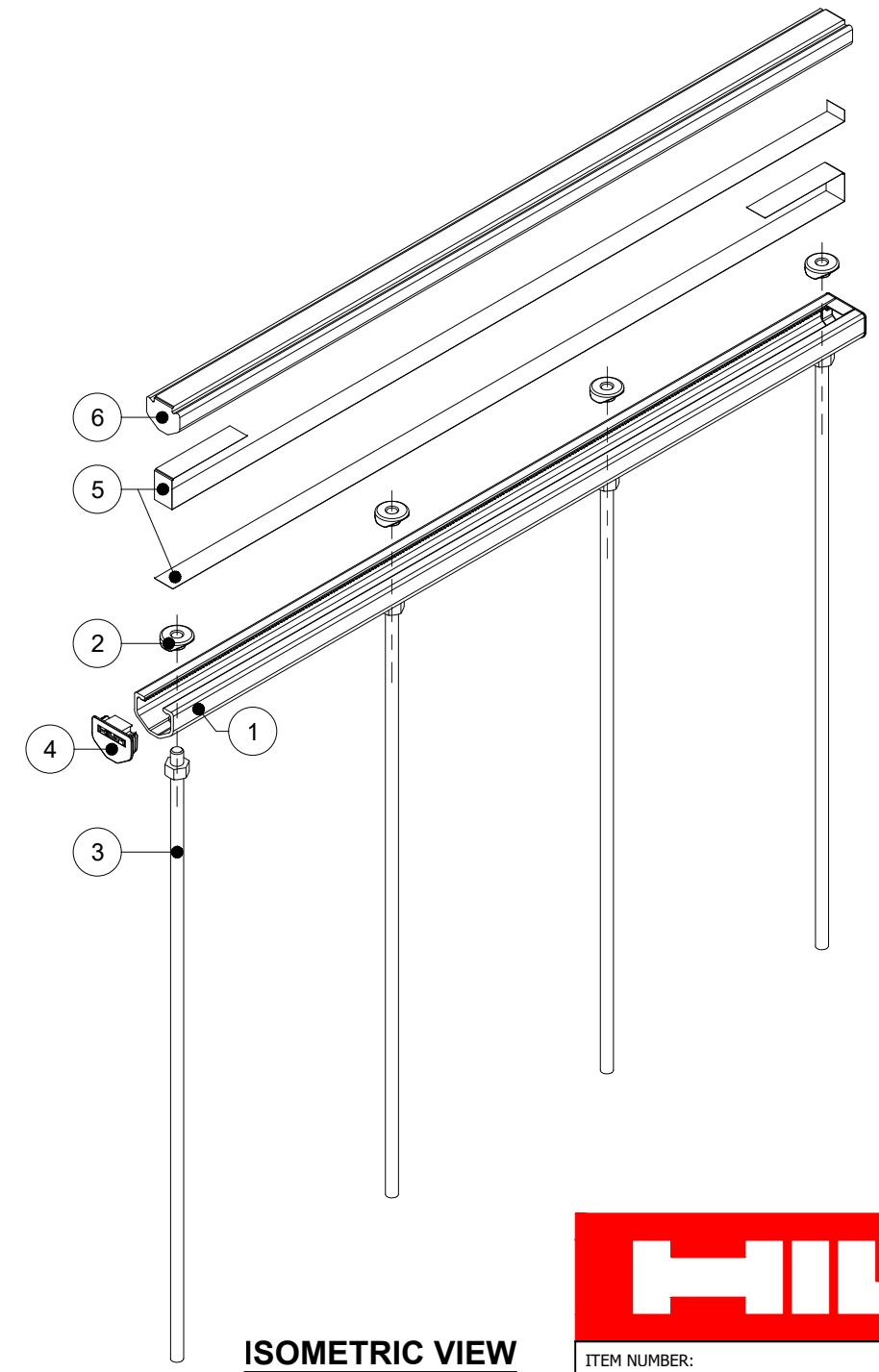
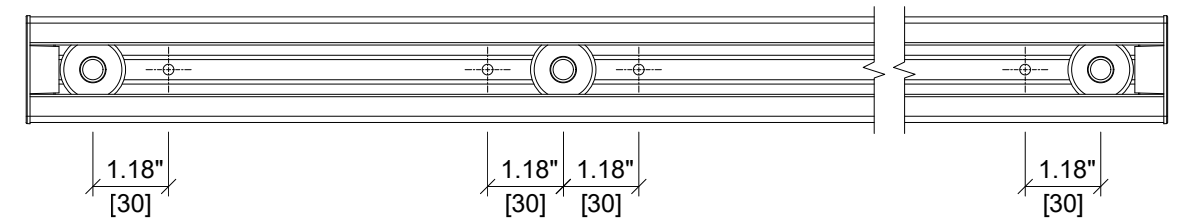
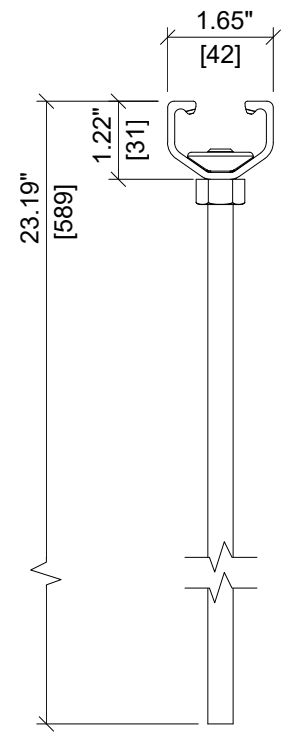
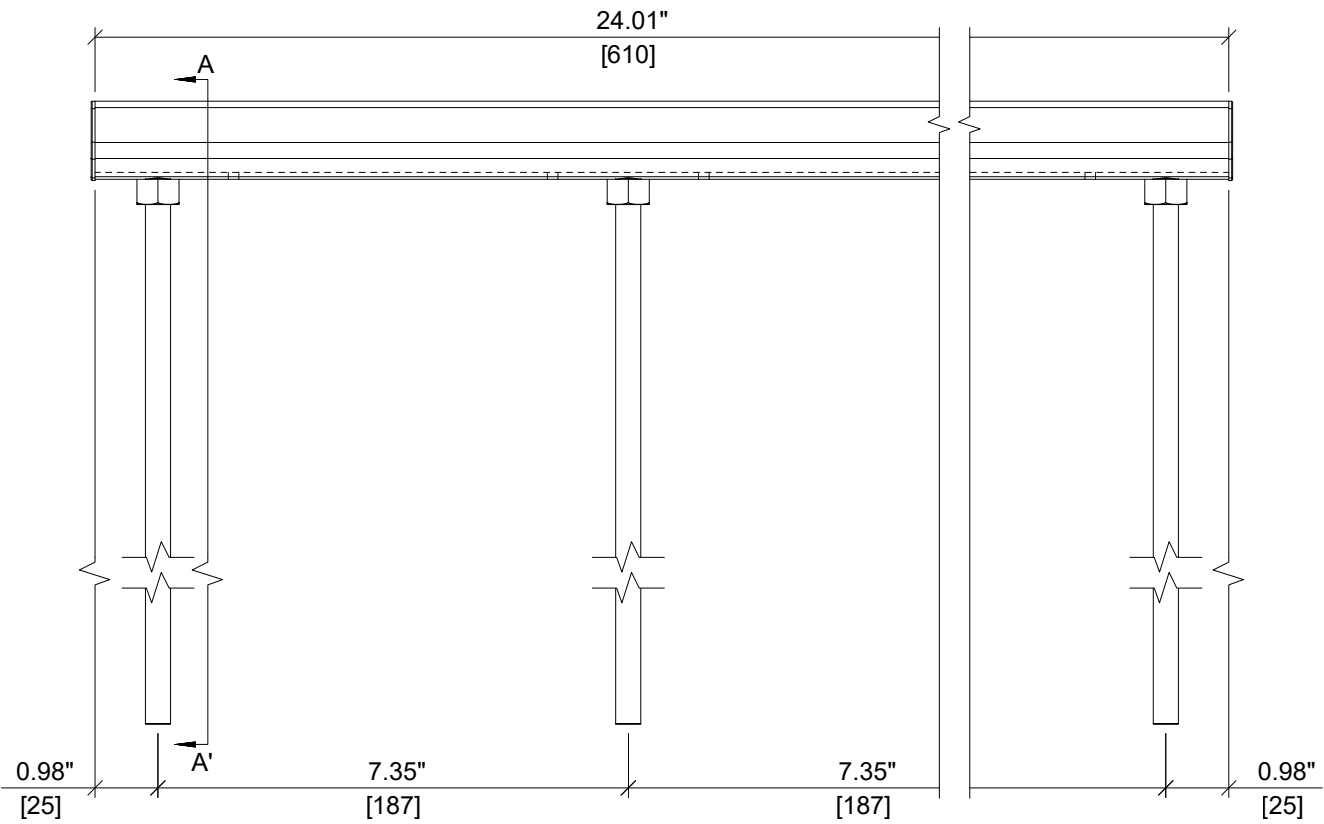
ISOMETRIC VIEW

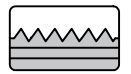


HILTI

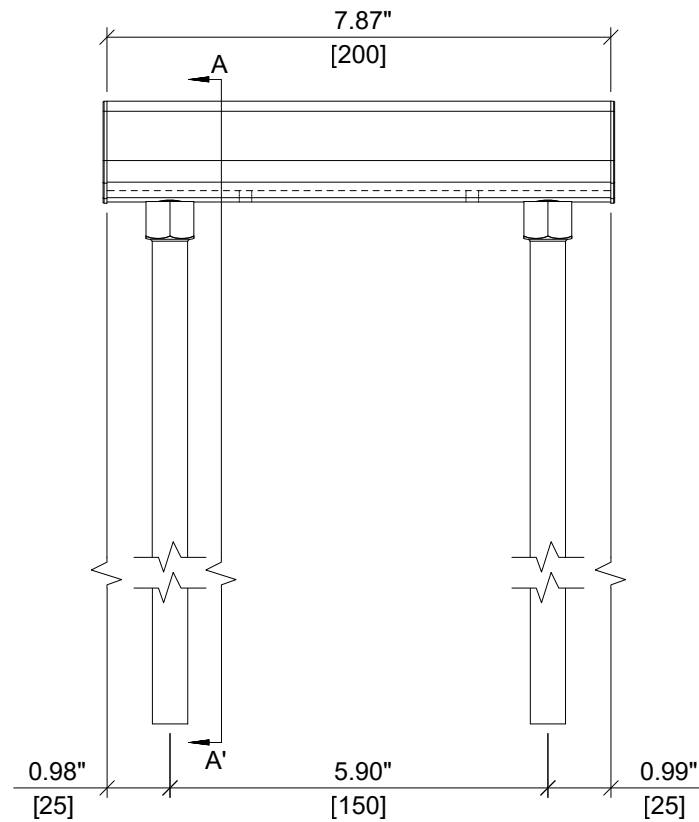
ITEM NUMBER: <div style="font-size: 18px; font-weight: bold; text-align: center;">2353771</div>	CHANNEL LIP: <div style="font-size: 18px; font-weight: bold; text-align: center;">SERRATED</div>
ITEM DESCRIPTION: <div style="font-weight: bold;">HAC-V-T 50 589/550 F Rebar XTS</div>	

ITEM	DESCRIPTION	QUANTITY
1	CHANNEL PROFILE	1
2	RIVET CONNECTION	4
3	ROUNDED HEADED ANCHOR	4
4	END CAP	2
5	TEAR OUT BAND	2
6	FILLER FOAM	1

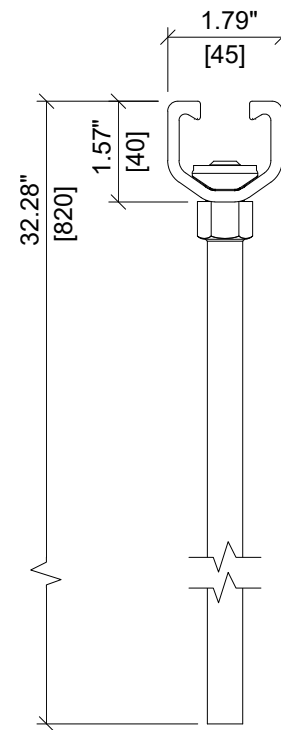


ITEM NUMBER: 2353772	CHANNEL LIP: SERRATED 
ITEM DESCRIPTION: HAC-V-T 50 589/610 F Rebar XTS	

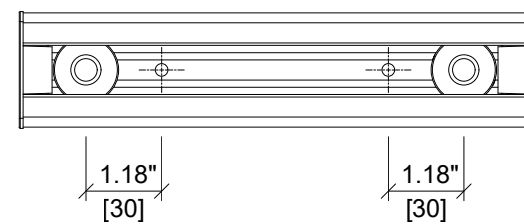
ITEM	DESCRIPTION	QUANTITY
1	CHANNEL PROFILE	1
2	RIVET CONNECTION	2
3	ROUNDED HEADED ANCHOR	2
4	END CAP	2
5	TEAR OUT BAND	1
6	FILLER FOAM	1



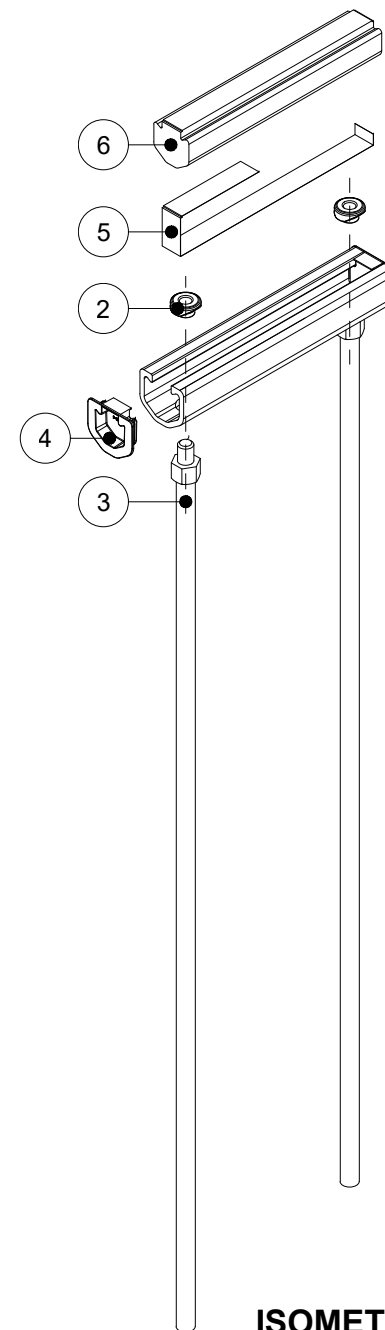
ELEVATION VIEW



SECTION A-A'



PLAN VIEW



ISOMETRIC VIEW

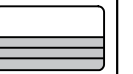


ITEM NUMBER:

2353759

CHANNEL LIP:

SMOOTH

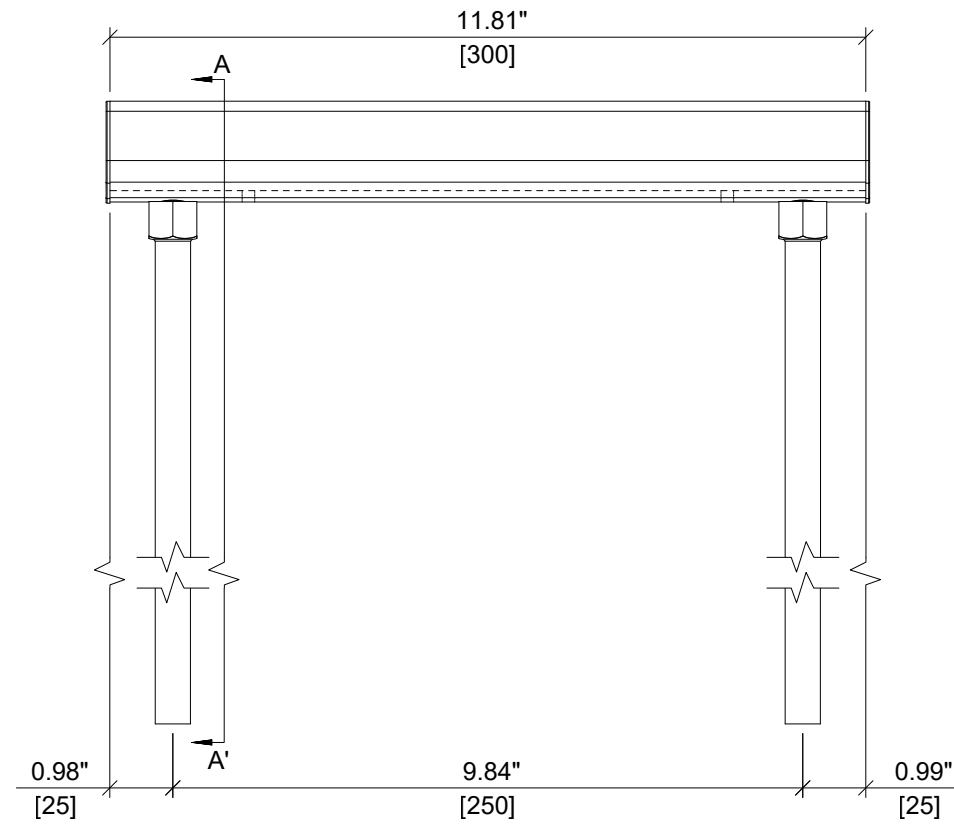


ITEM DESCRIPTION:

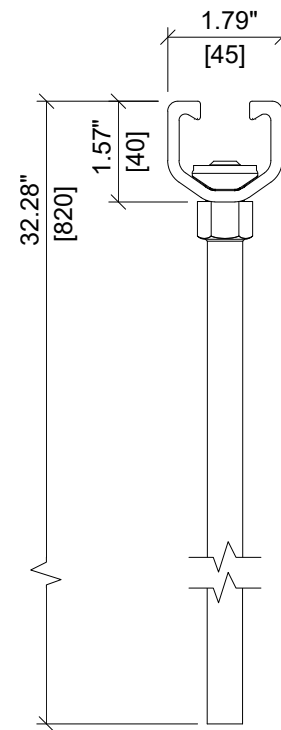
HAC-V 70 820/200 F Rebar XTS



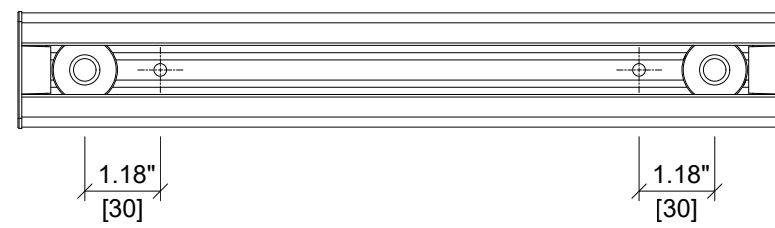
ITEM	DESCRIPTION	QUANTITY
1	CHANNEL PROFILE	1
2	RIVET CONNECTION	2
3	ROUNDED HEADED ANCHOR	2
4	END CAP	2
5	TEAR OUT BAND	1
6	FILLER FOAM	1



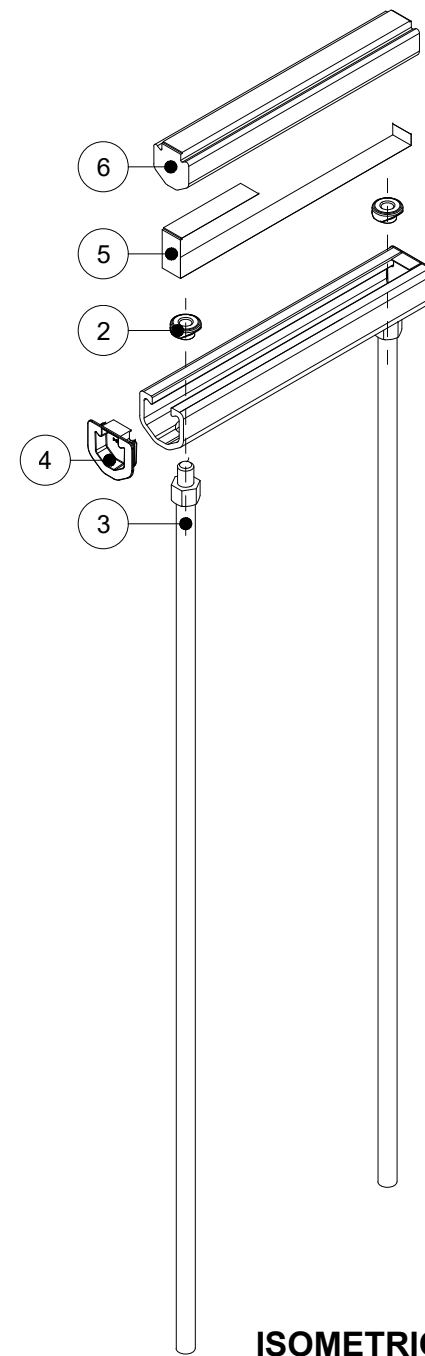
ELEVATION VIEW



SECTION A-A'



PLAN VIEW



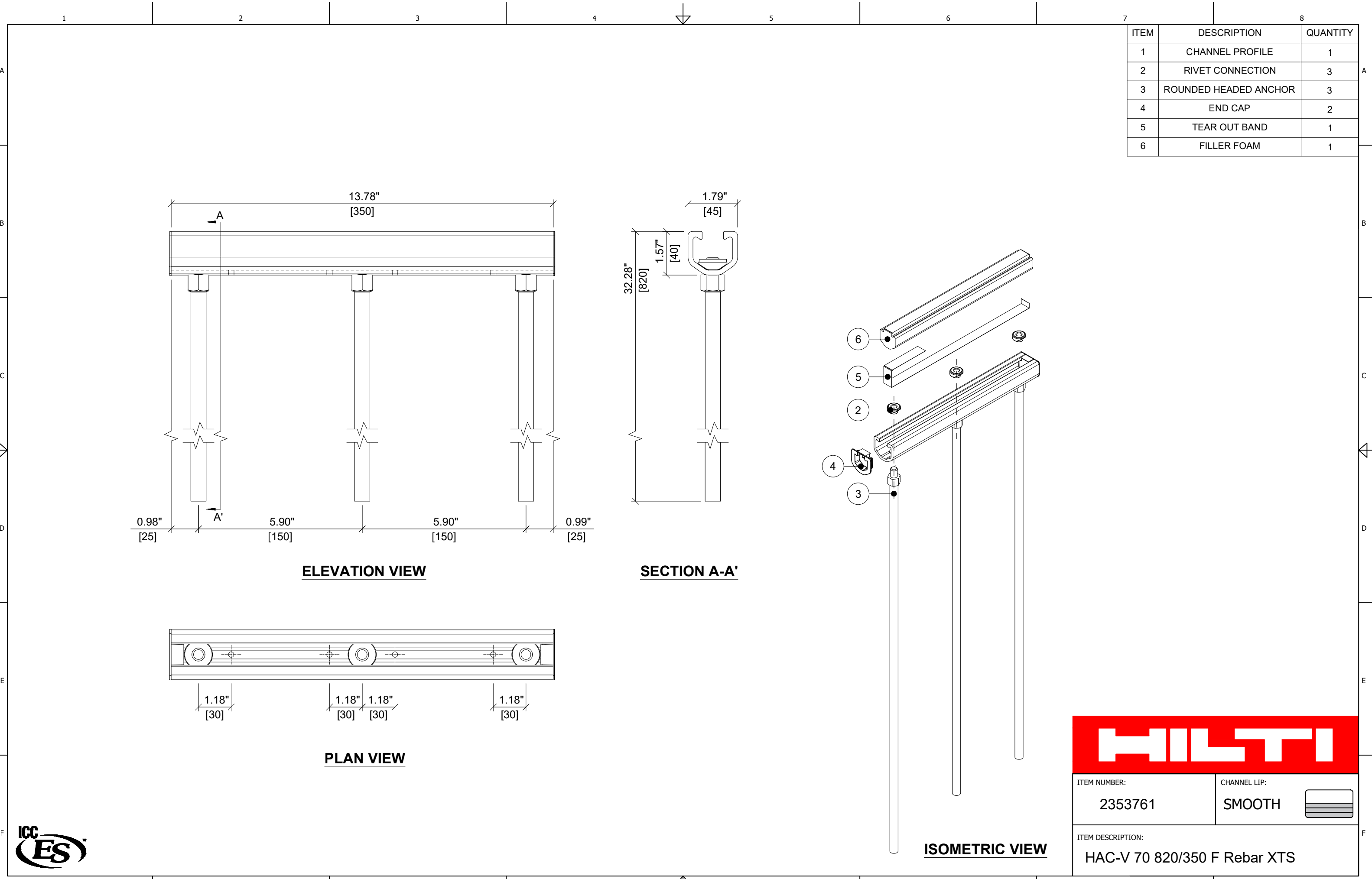
ISOMETRIC VIEW



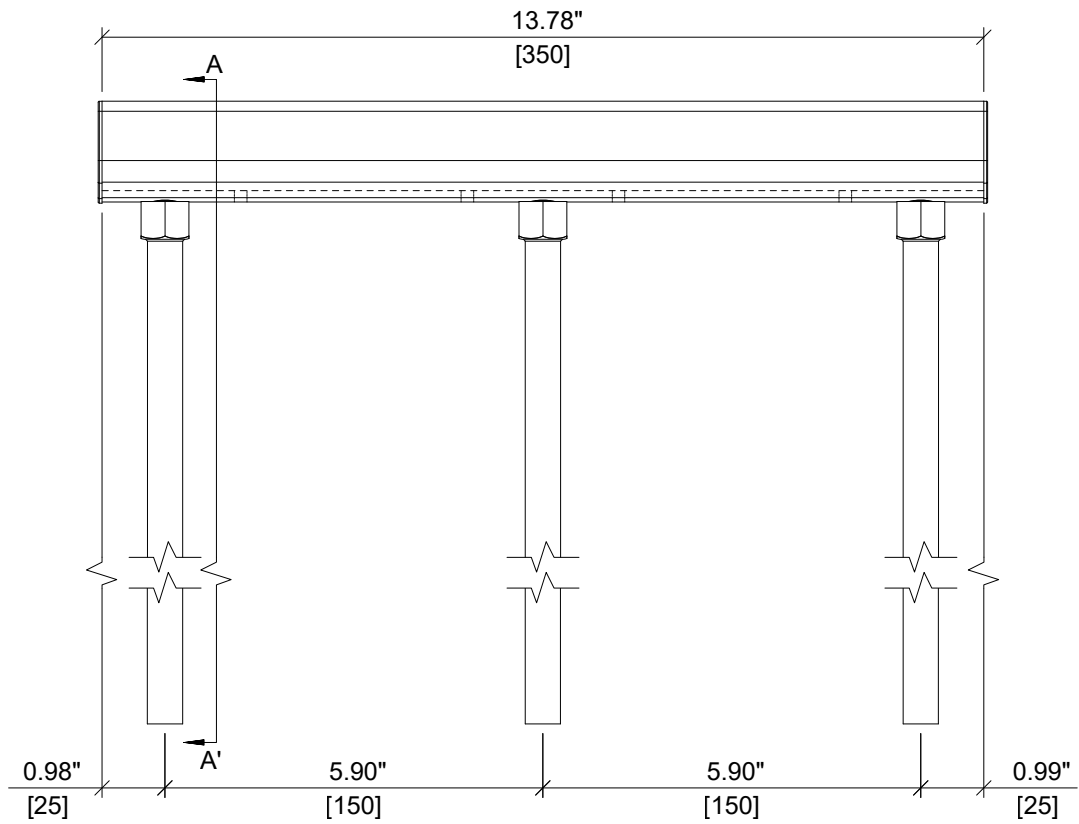
ITEM NUMBER: 2353760	CHANNEL LIP: SMOOTH
--------------------------------	-------------------------------

ITEM DESCRIPTION:
HAC-V 70 820/300 F Rebar XTS

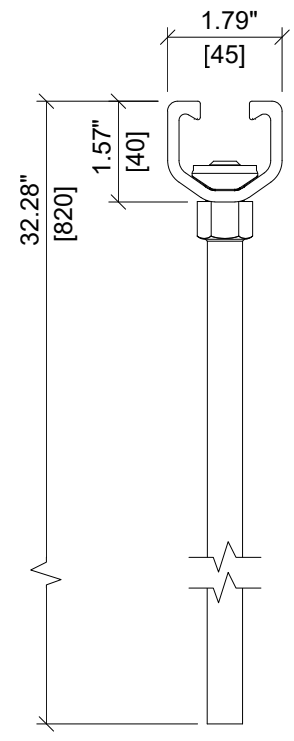




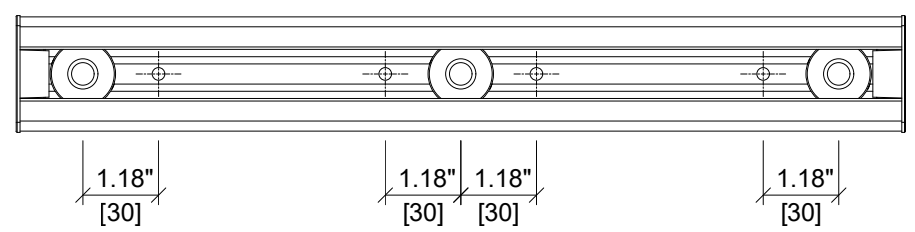
ITEM	DESCRIPTION	QUANTITY
1	CHANNEL PROFILE	1
2	RIVET CONNECTION	3
3	ROUNDED HEADED ANCHOR	3
4	END CAP	2
5	TEAR OUT BAND	1
6	FILLER FOAM	1



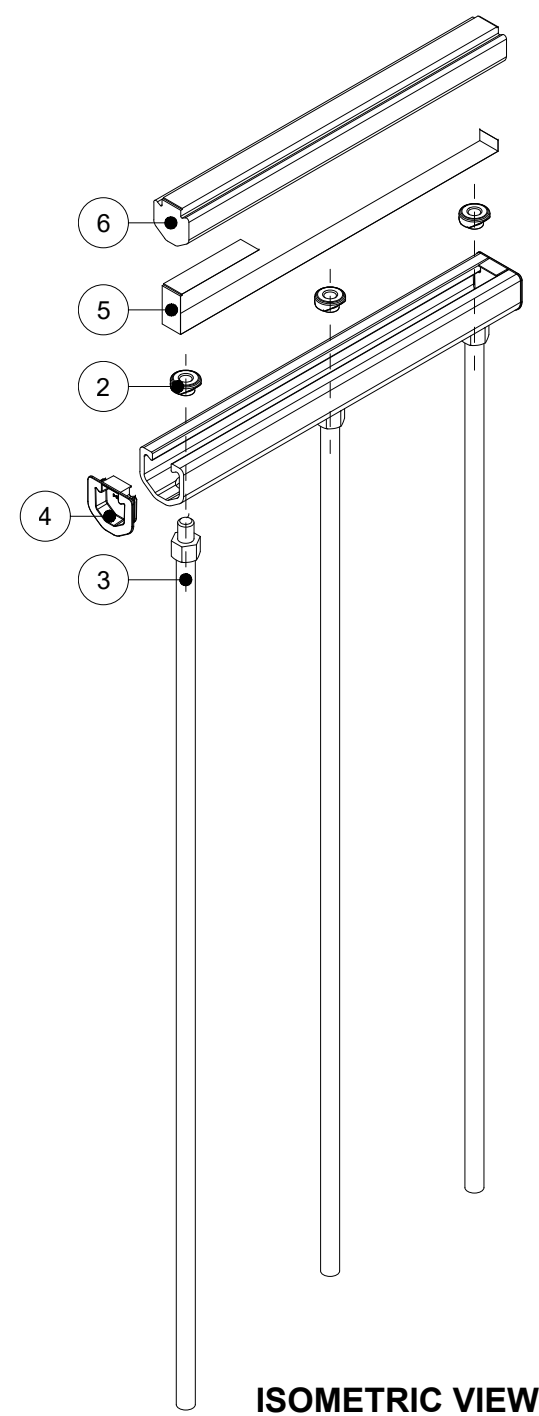
ELEVATION VIEW



SECTION A-A'



PLAN VIEW



ISOMETRIC VIEW

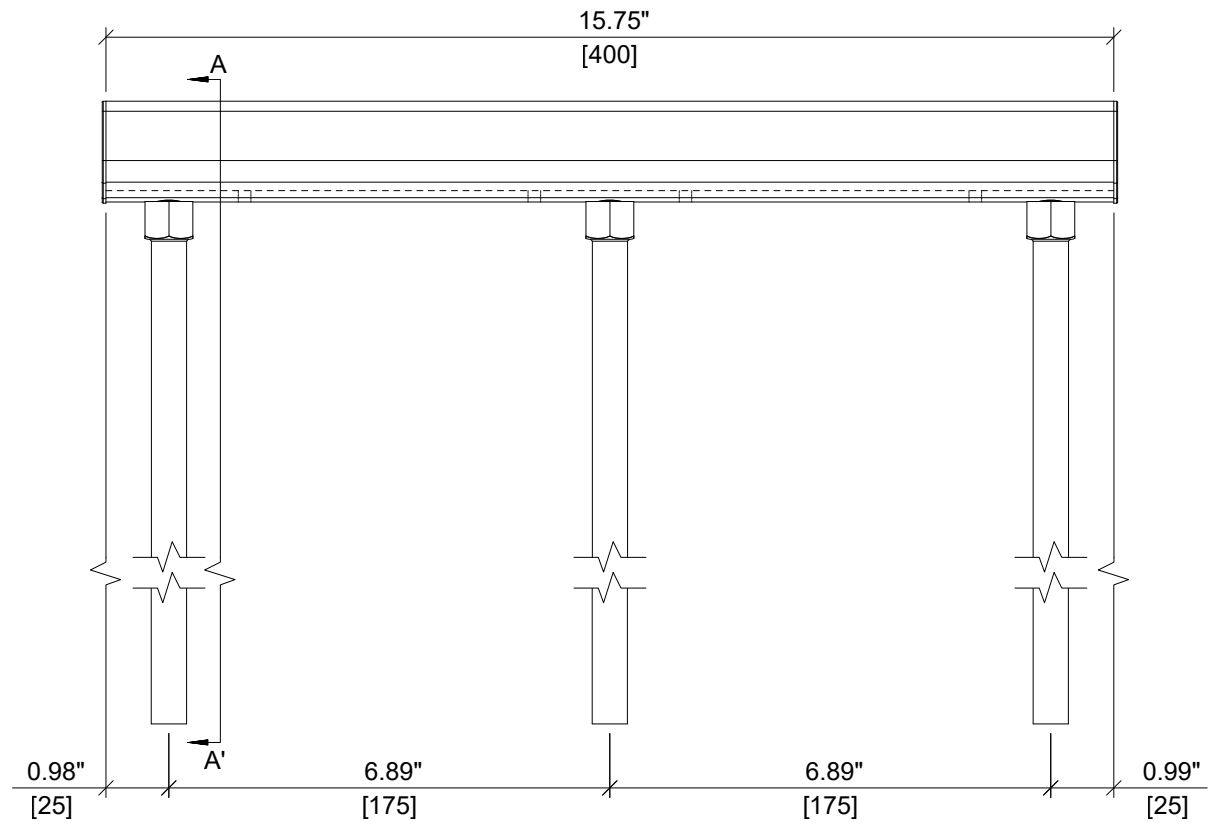


ITEM NUMBER: 2353761	CHANNEL LIP: SMOOTH
--------------------------------	-------------------------------

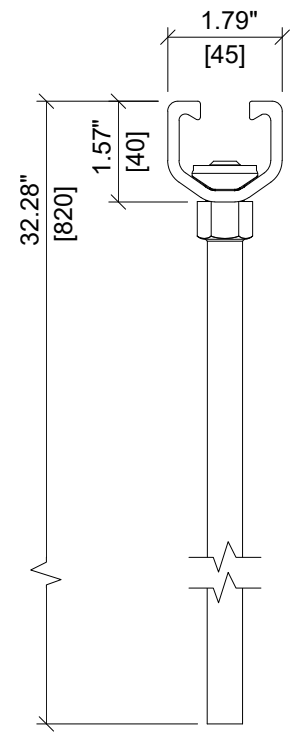
ITEM DESCRIPTION:
HAC-V 70 820/350 F Rebar XTS



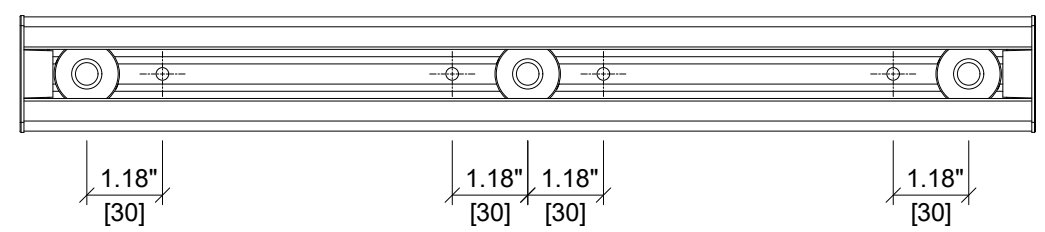
ITEM	DESCRIPTION	QUANTITY
1	CHANNEL PROFILE	1
2	RIVET CONNECTION	3
3	ROUNDED HEADED ANCHOR	3
4	END CAP	2
5	TEAR OUT BAND	1
6	FILLER FOAM	1



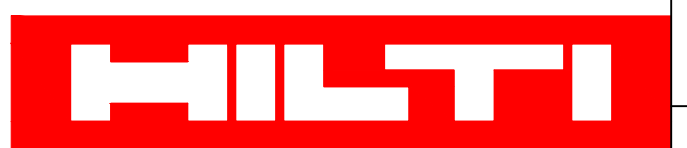
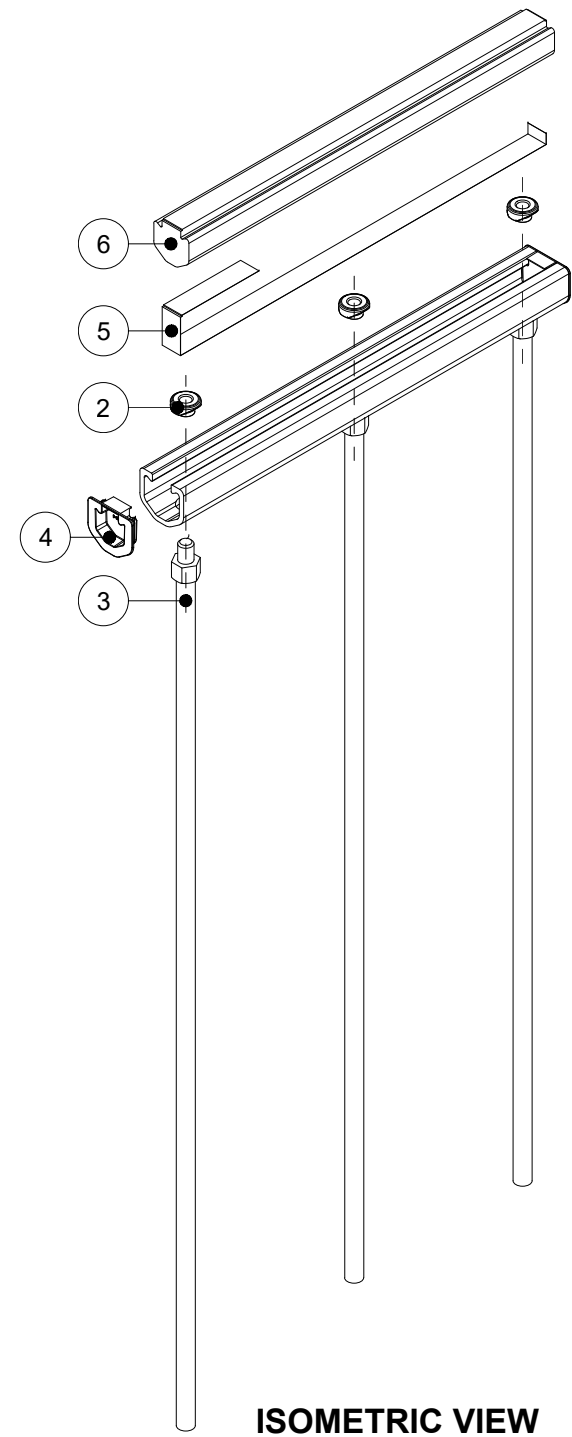
ELEVATION VIEW



SECTION A-A'



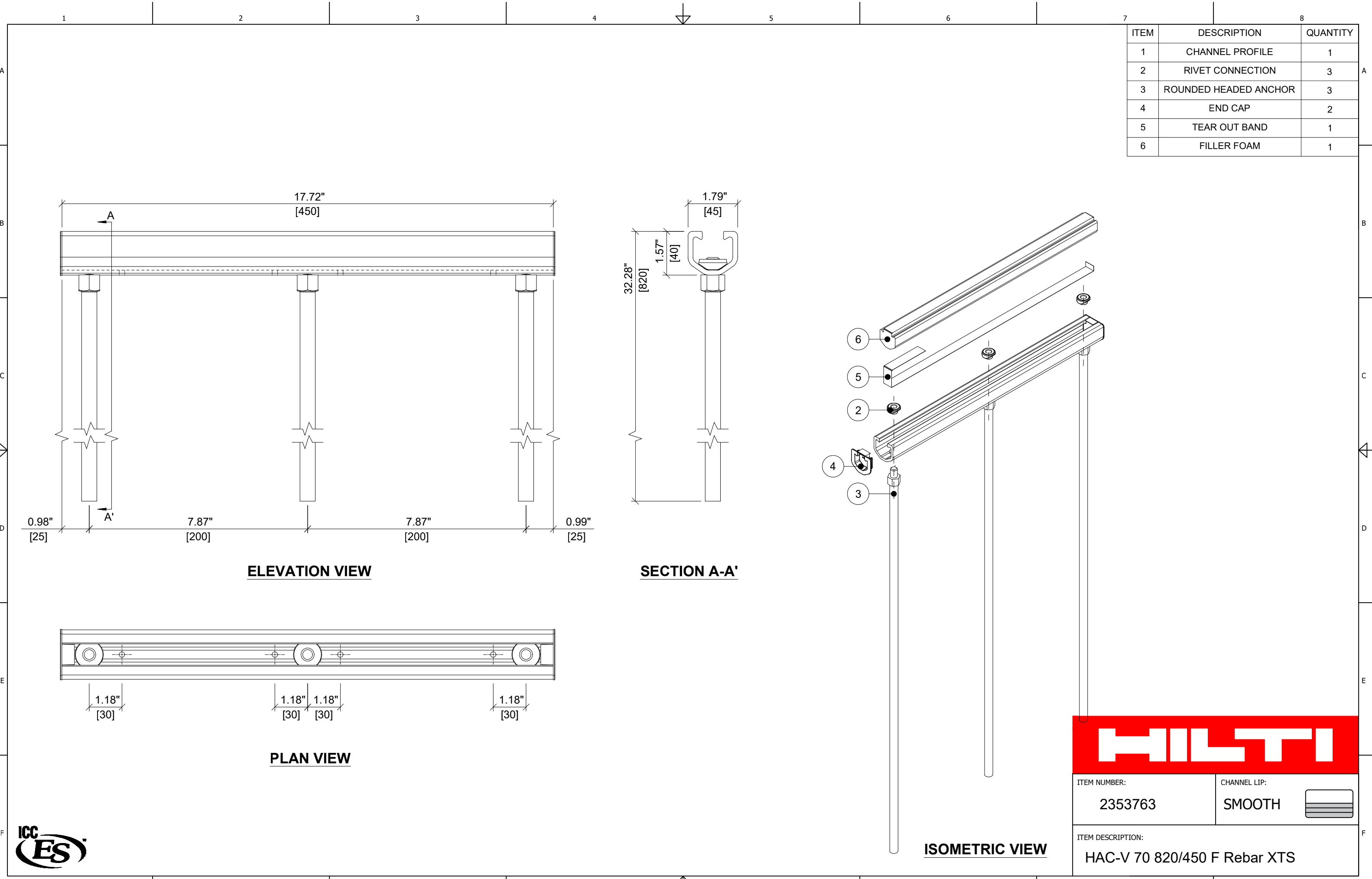
PLAN VIEW



ITEM NUMBER: 2353762 CHANNEL LIP: SMOOTH

ITEM DESCRIPTION: HAC-V 70 820/400 F Rebar XTS





ITEM	DESCRIPTION	QUANTITY
1	CHANNEL PROFILE	1
2	RIVET CONNECTION	3
3	ROUNDED HEADED ANCHOR	3
4	END CAP	2
5	TEAR OUT BAND	1
6	FILLER FOAM	1

ELEVATION VIEW

SECTION A-A'

PLAN VIEW

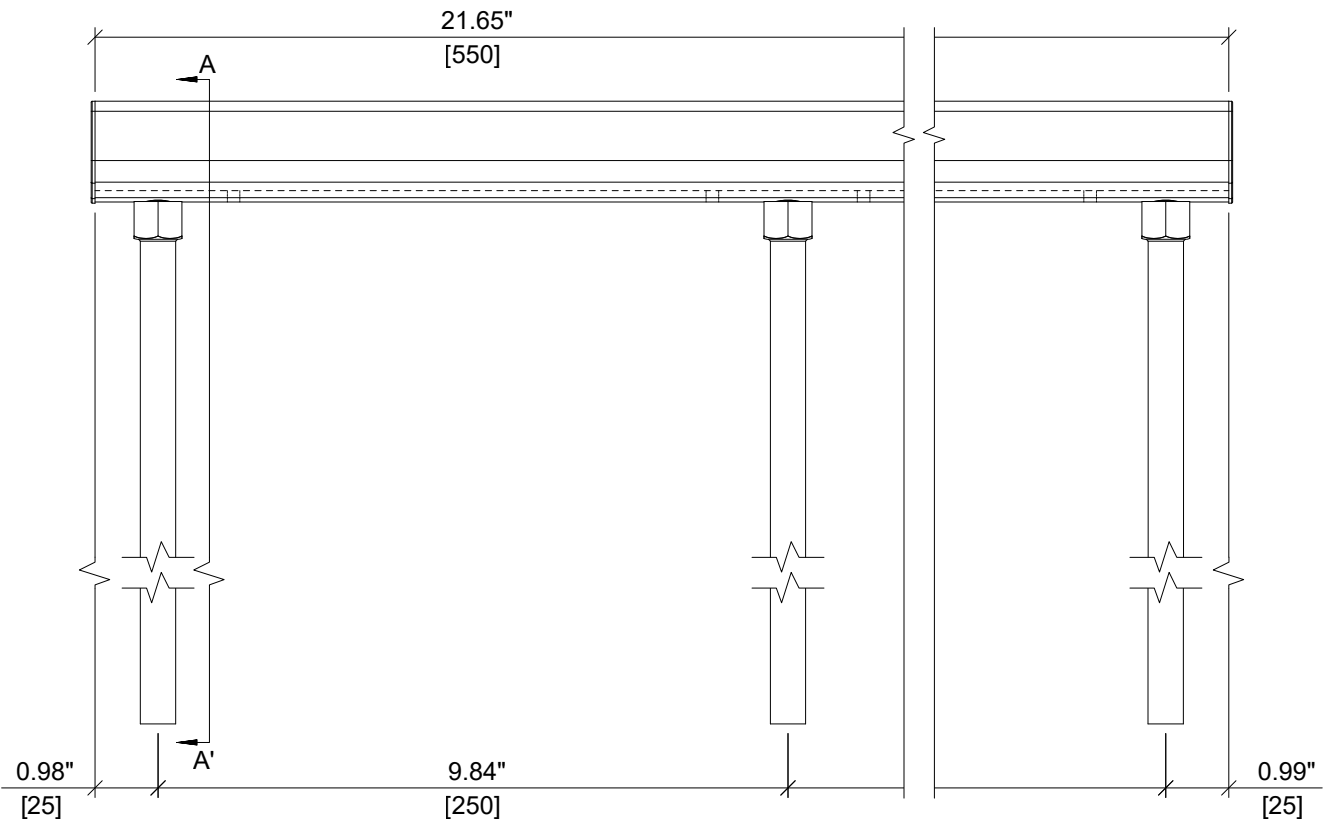
ISOMETRIC VIEW

HILTI

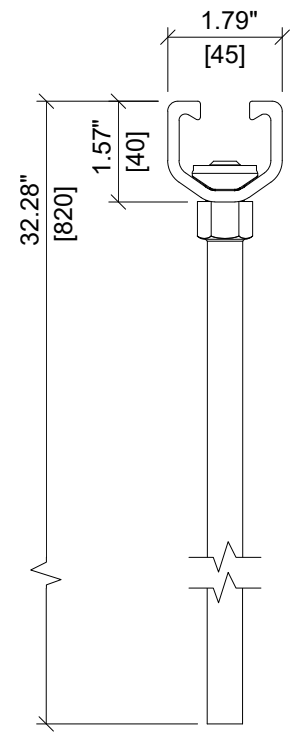
ITEM NUMBER: <div style="font-size: 18px; font-weight: bold; text-align: center;">2353763</div>	CHANNEL LIP: <div style="font-size: 18px; font-weight: bold; text-align: center;">SMOOTH</div> <div style="text-align: right; margin-top: 5px;"> </div>
ITEM DESCRIPTION: <div style="font-size: 16px; font-weight: bold; text-align: center;">HAC-V 70 820/450 F Rebar XTS</div>	



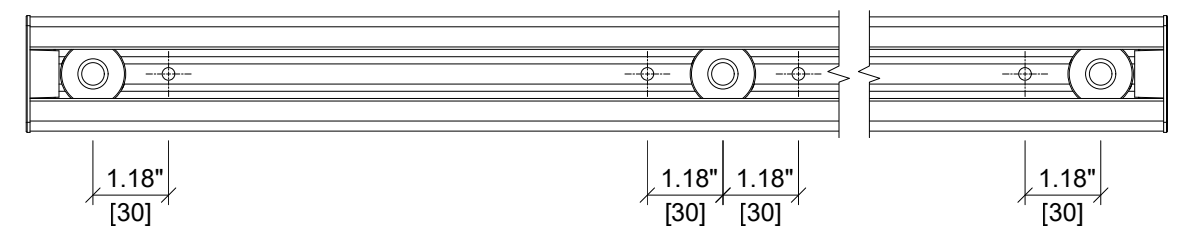
ITEM	DESCRIPTION	QUANTITY
1	CHANNEL PROFILE	1
2	RIVET CONNECTION	3
3	ROUNDED HEADED ANCHOR	3
4	END CAP	2
5	TEAR OUT BAND	1
6	FILLER FOAM	1



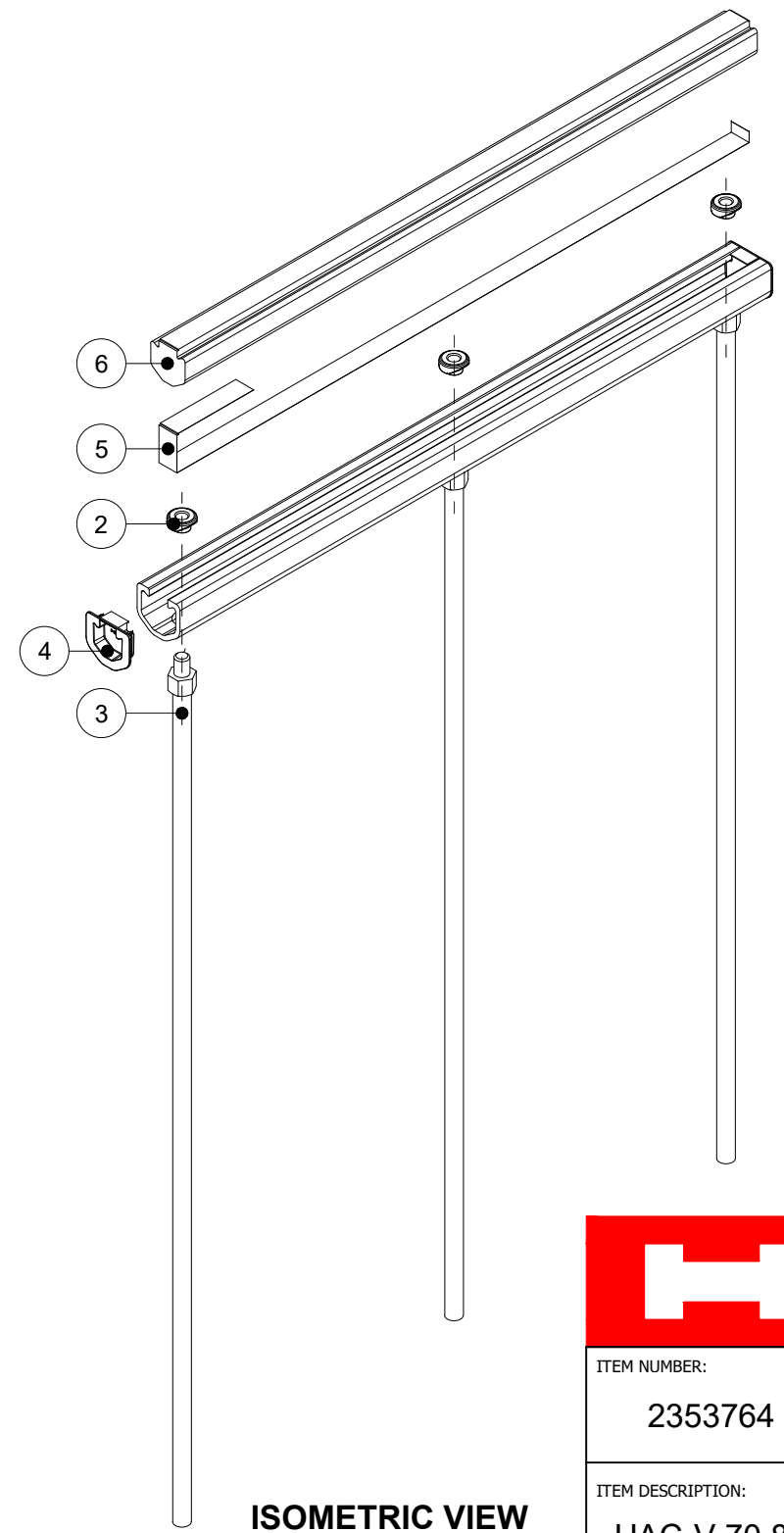
ELEVATION VIEW



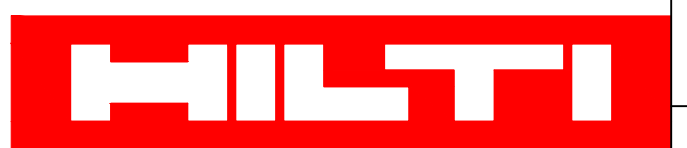
SECTION A-A'



PLAN VIEW



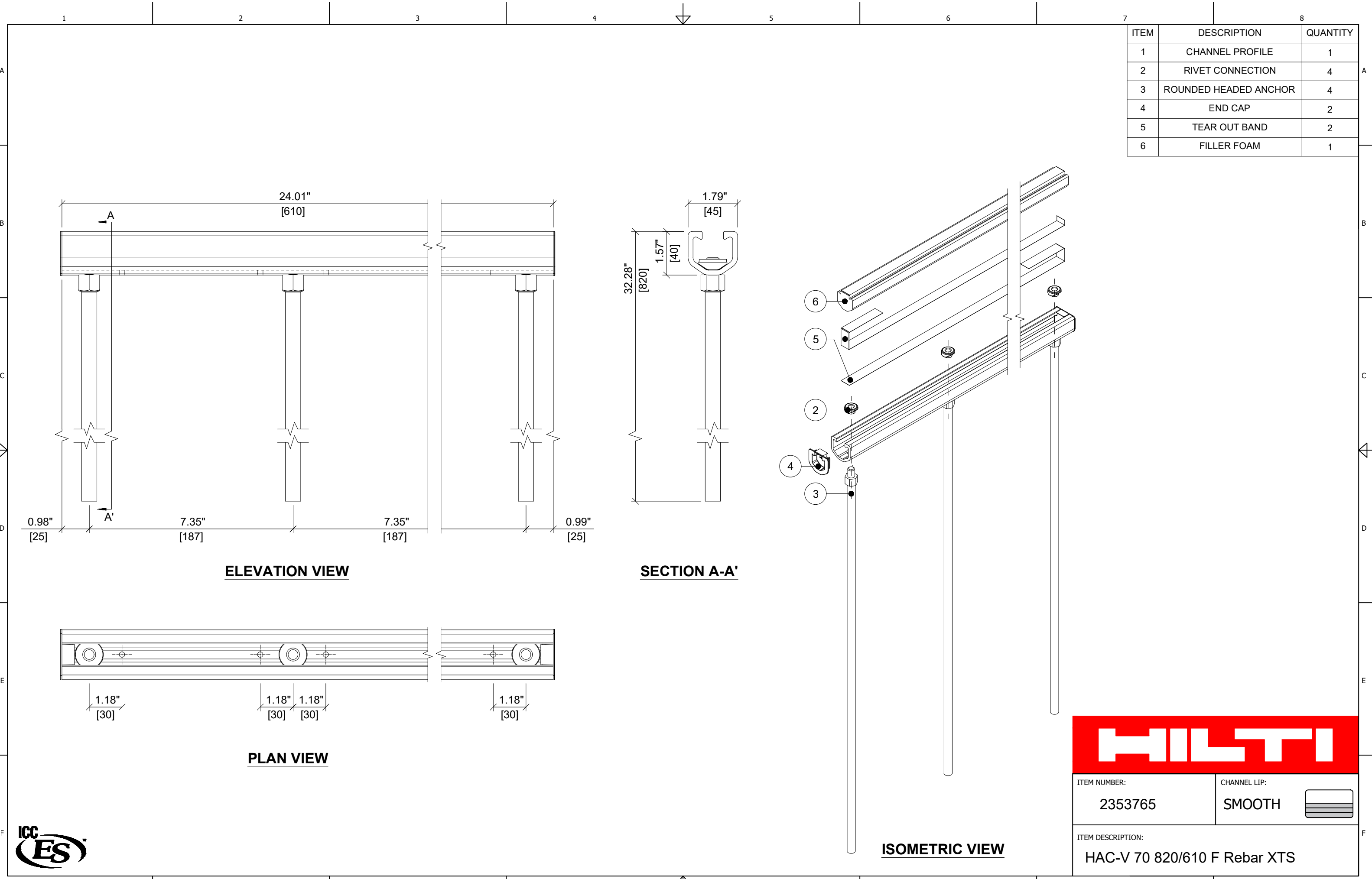
ISOMETRIC VIEW



ITEM NUMBER: 2353764	CHANNEL LIP: SMOOTH
--------------------------------	-------------------------------

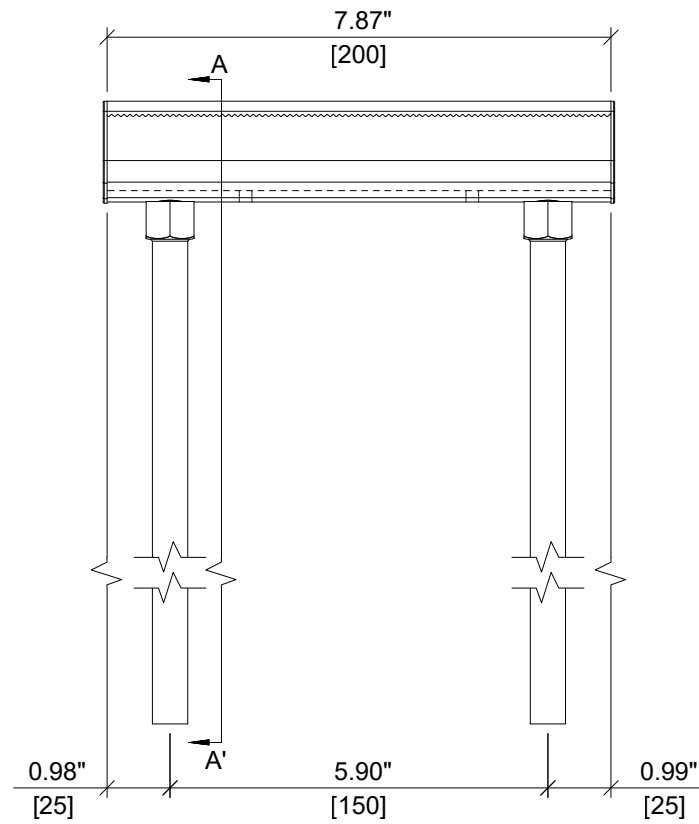
ITEM DESCRIPTION:
HAC-V 70 820/550 F Rebar XTS



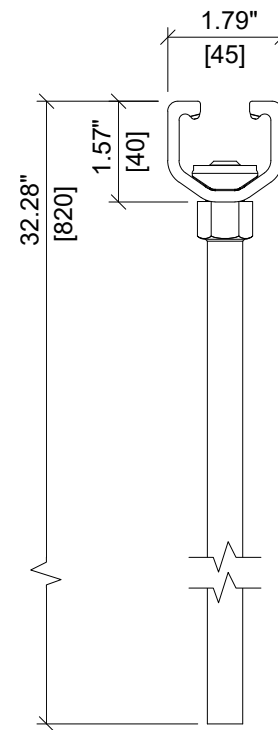


ITEM NUMBER: 2353765	CHANNEL LIP: SMOOTH
ITEM DESCRIPTION: HAC-V 70 820/610 F Rebar XTS	

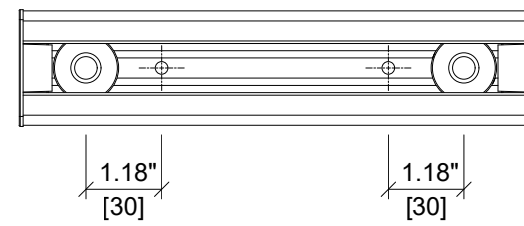
ITEM	DESCRIPTION	QUANTITY
1	CHANNEL PROFILE	1
2	RIVET CONNECTION	2
3	ROUNDED HEADED ANCHOR	2
4	END CAP	2
5	TEAR OUT BAND	1
6	FILLER FOAM	1



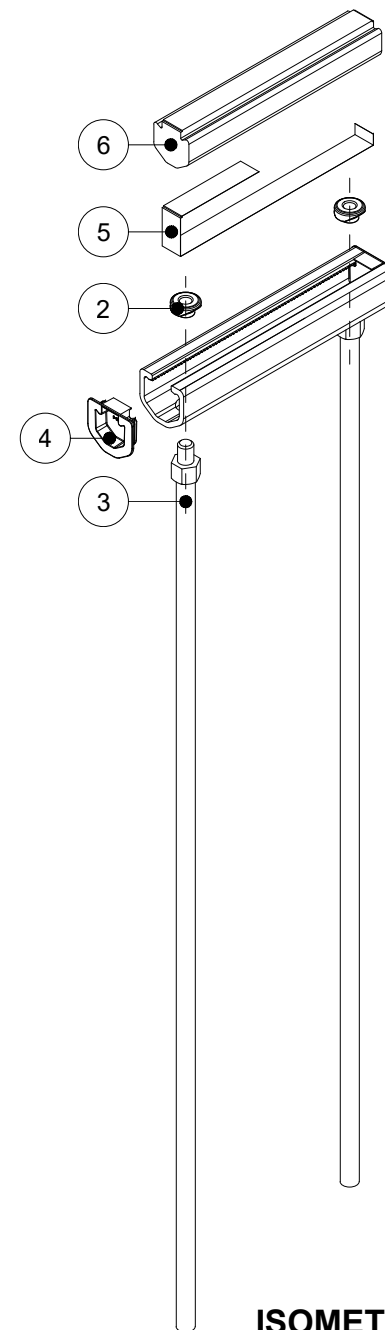
ELEVATION VIEW



SECTION A-A'



PLAN VIEW



ISOMETRIC VIEW



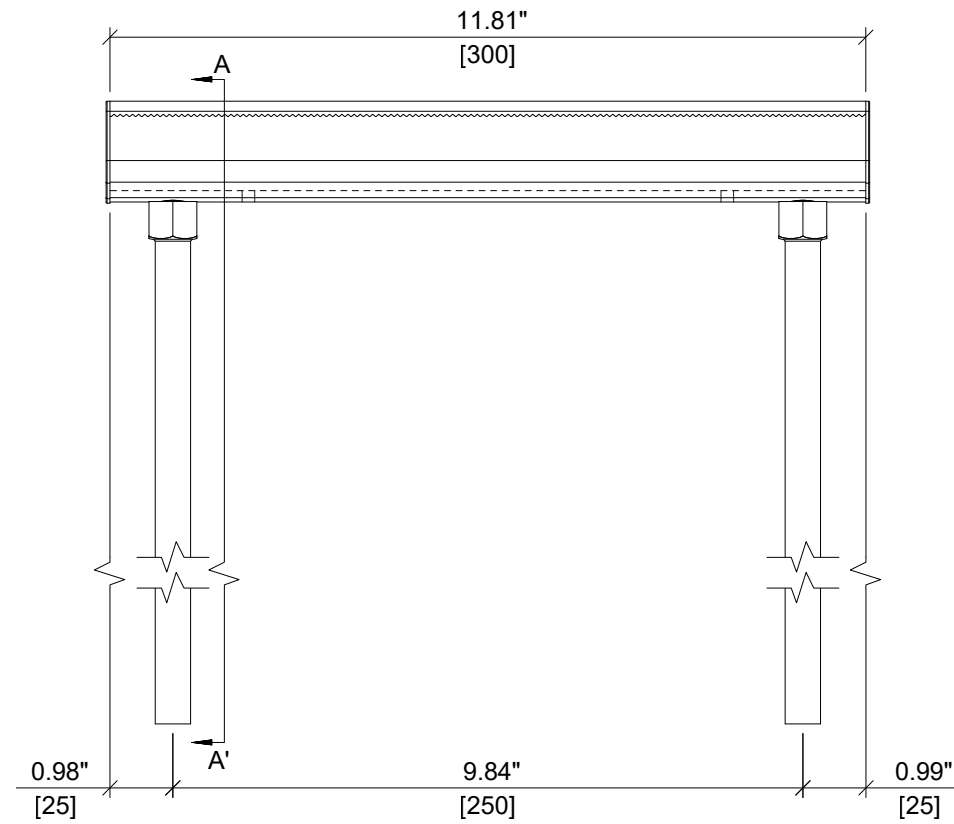
ITEM NUMBER:
2353773

CHANNEL LIP:
SERRATED 

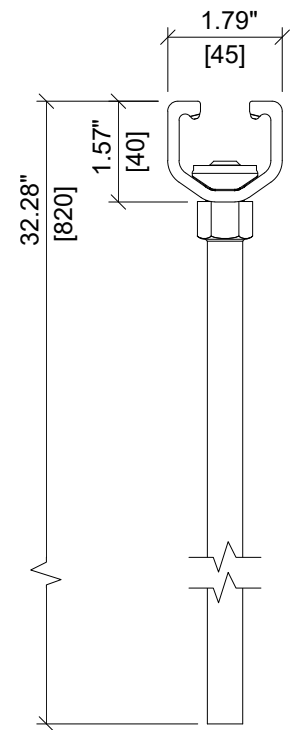
ITEM DESCRIPTION:
HAC-V-T 70 820/200 F Rebar XTS



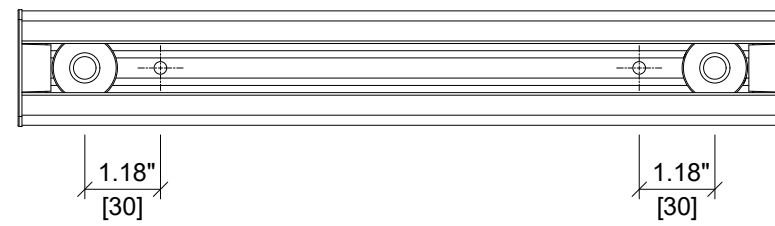
ITEM	DESCRIPTION	QUANTITY
1	CHANNEL PROFILE	1
2	RIVET CONNECTION	2
3	ROUNDED HEADED ANCHOR	2
4	END CAP	2
5	TEAR OUT BAND	1
6	FILLER FOAM	1



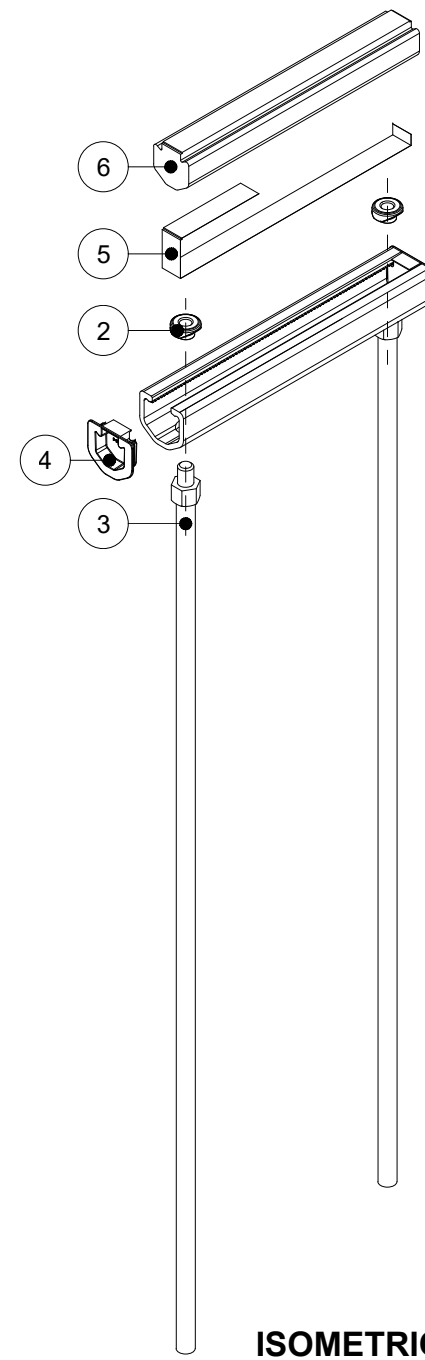
ELEVATION VIEW



SECTION A-A'

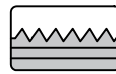


PLAN VIEW



ISOMETRIC VIEW

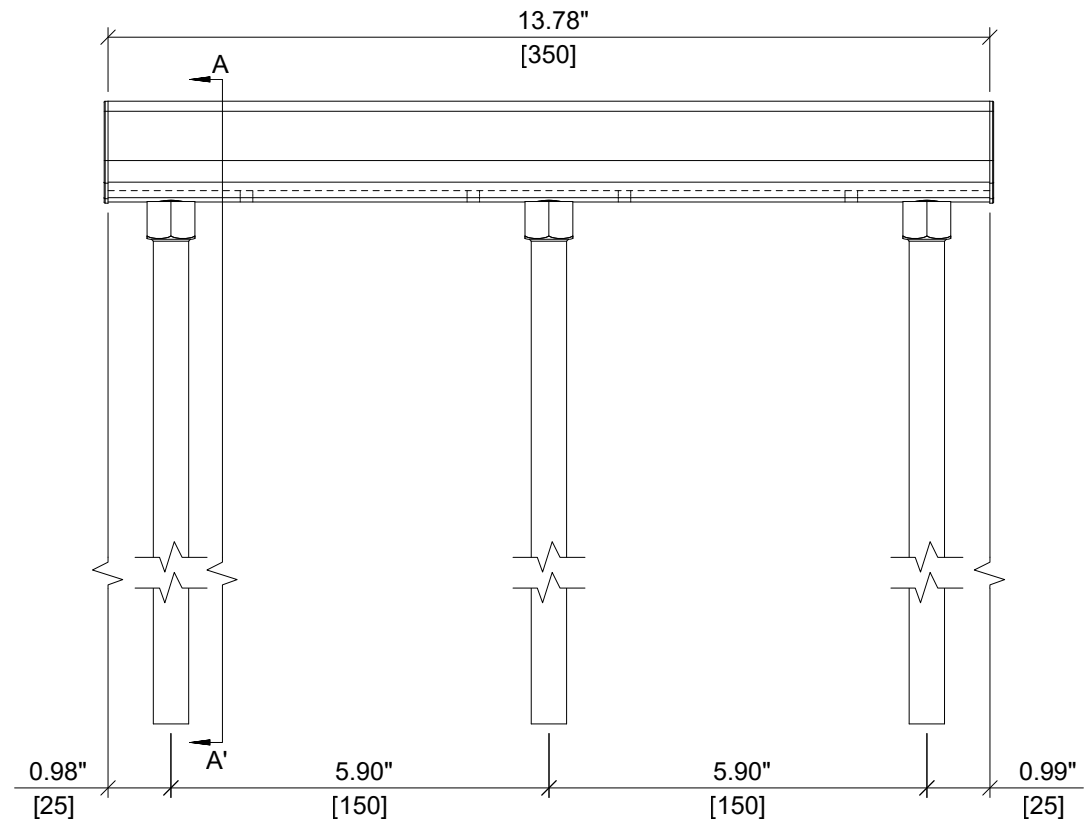


ITEM NUMBER: 2353774	CHANNEL LIP: SERRATED 
--------------------------------	---

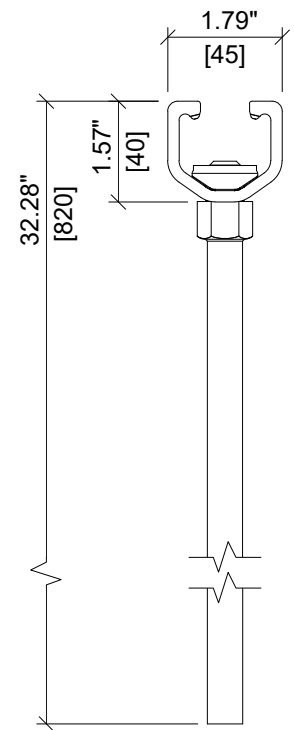
ITEM DESCRIPTION:
HAC-V-T 70 820/300 F Rebar XTS



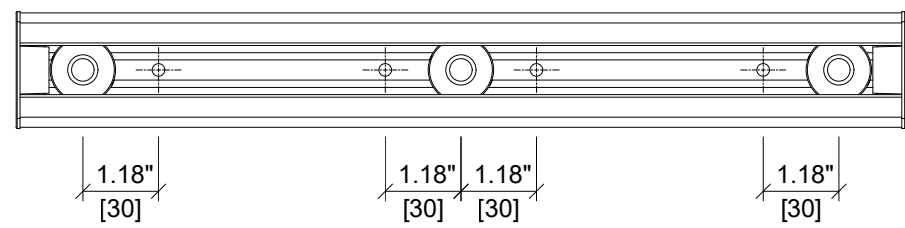
ITEM	DESCRIPTION	QUANTITY
1	CHANNEL PROFILE	1
2	RIVET CONNECTION	3
3	ROUNDED HEADED ANCHOR	3
4	END CAP	2
5	TEAR OUT BAND	1
6	FILLER FOAM	1



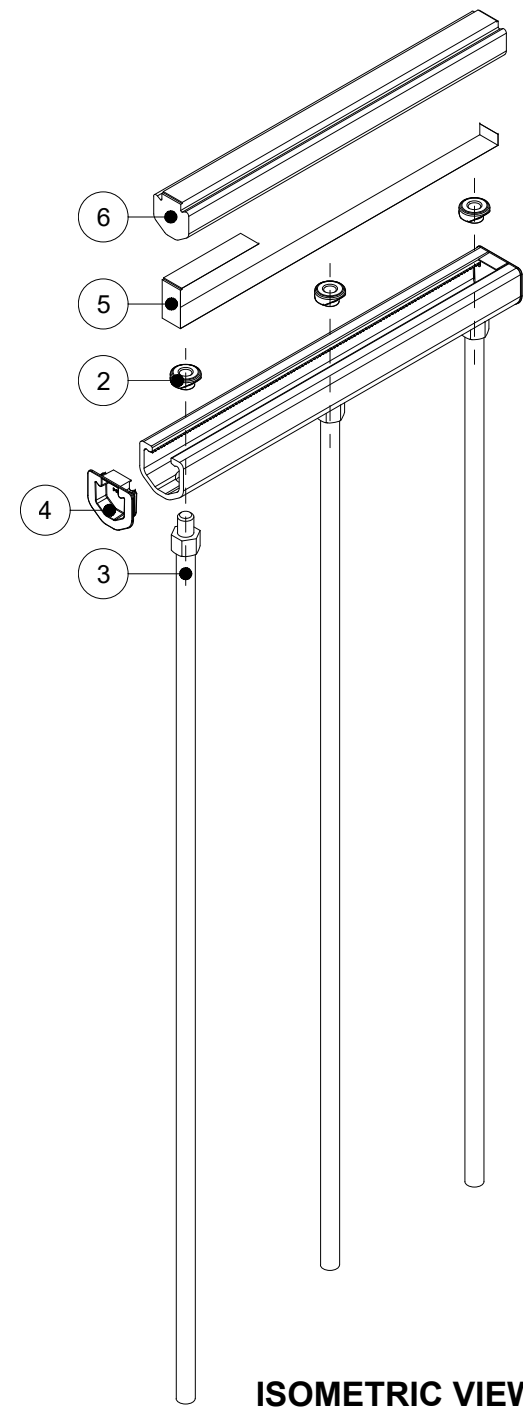
ELEVATION VIEW



SECTION A-A'

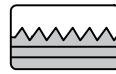


PLAN VIEW



ISOMETRIC VIEW

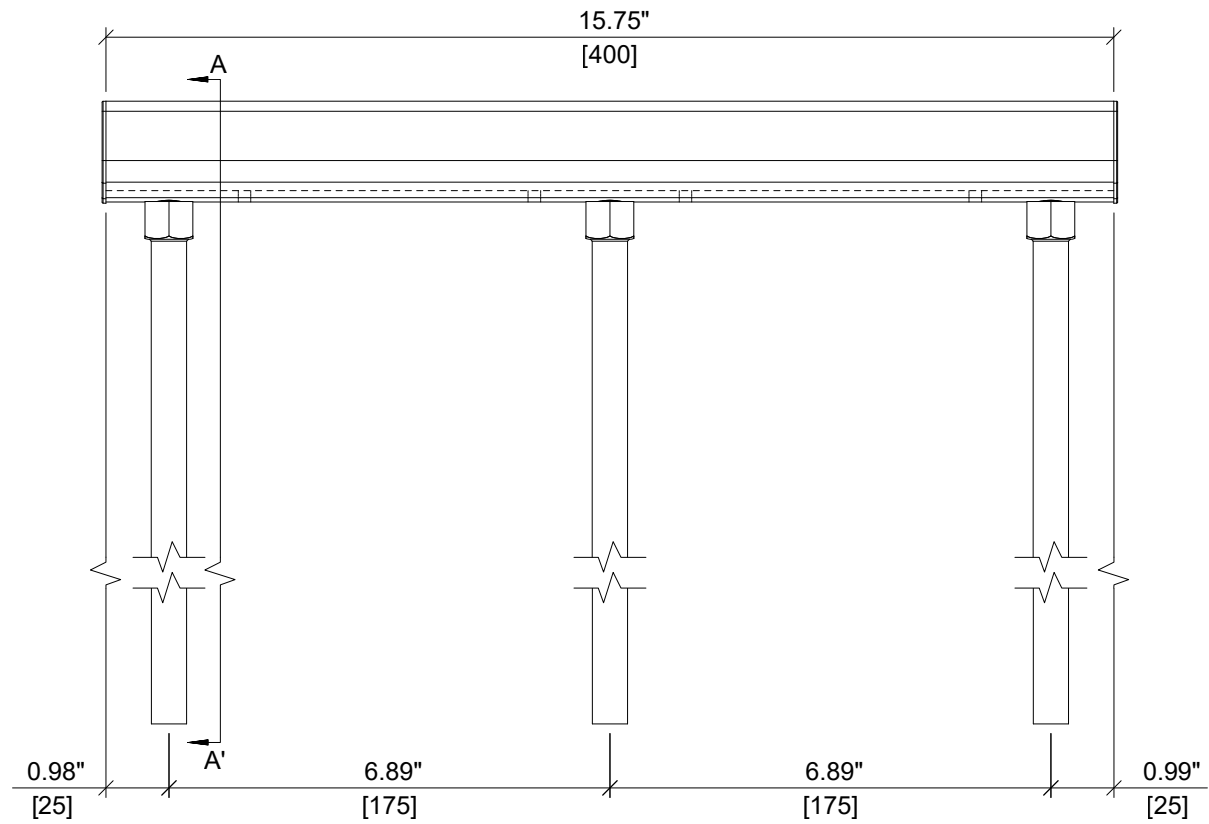


ITEM NUMBER: 2353775
 CHANNEL LIP: SERRATED 

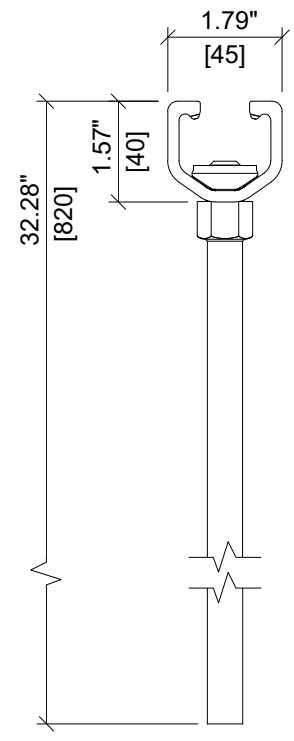
ITEM DESCRIPTION:
 HAC-V-T 70 820/350 F Rebar XTS



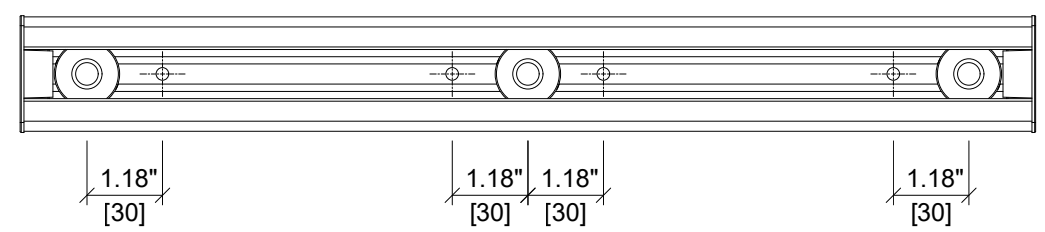
ITEM	DESCRIPTION	QUANTITY
1	CHANNEL PROFILE	1
2	RIVET CONNECTION	3
3	ROUNDED HEADED ANCHOR	3
4	END CAP	2
5	TEAR OUT BAND	1
6	FILLER FOAM	1



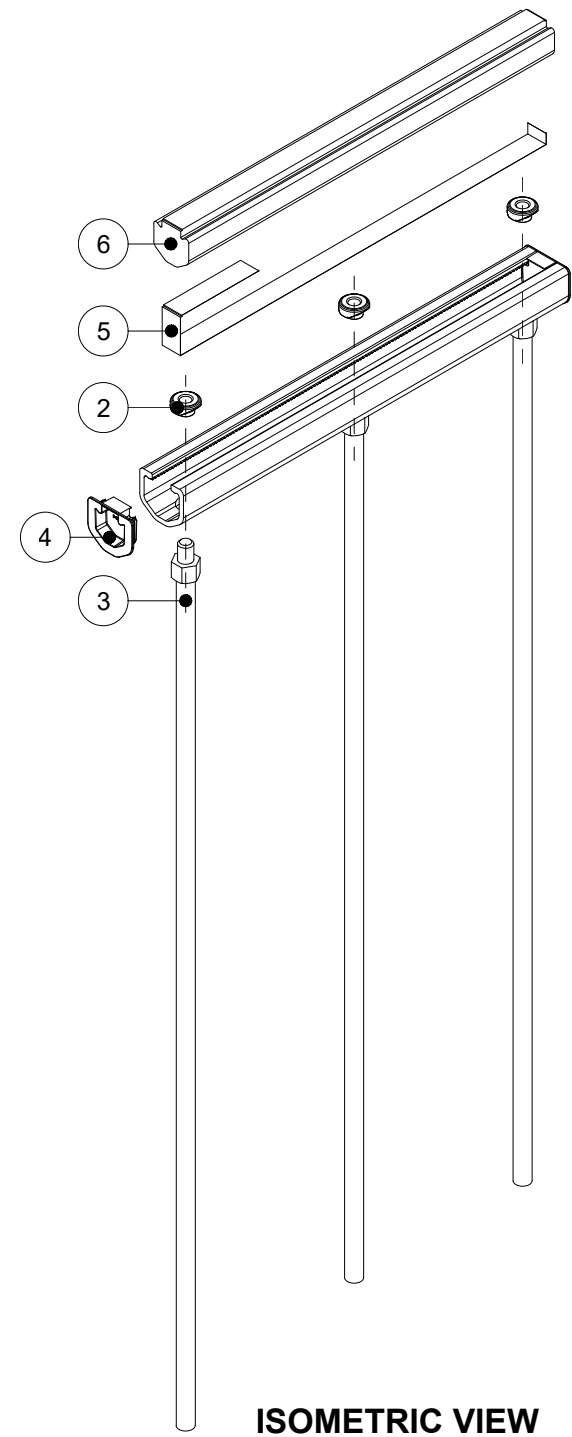
ELEVATION VIEW



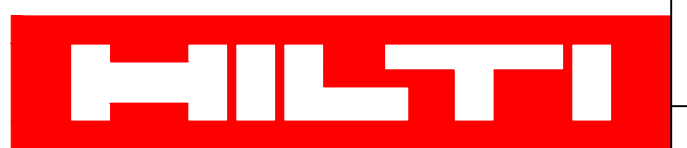
SECTION A-A'

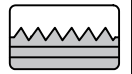


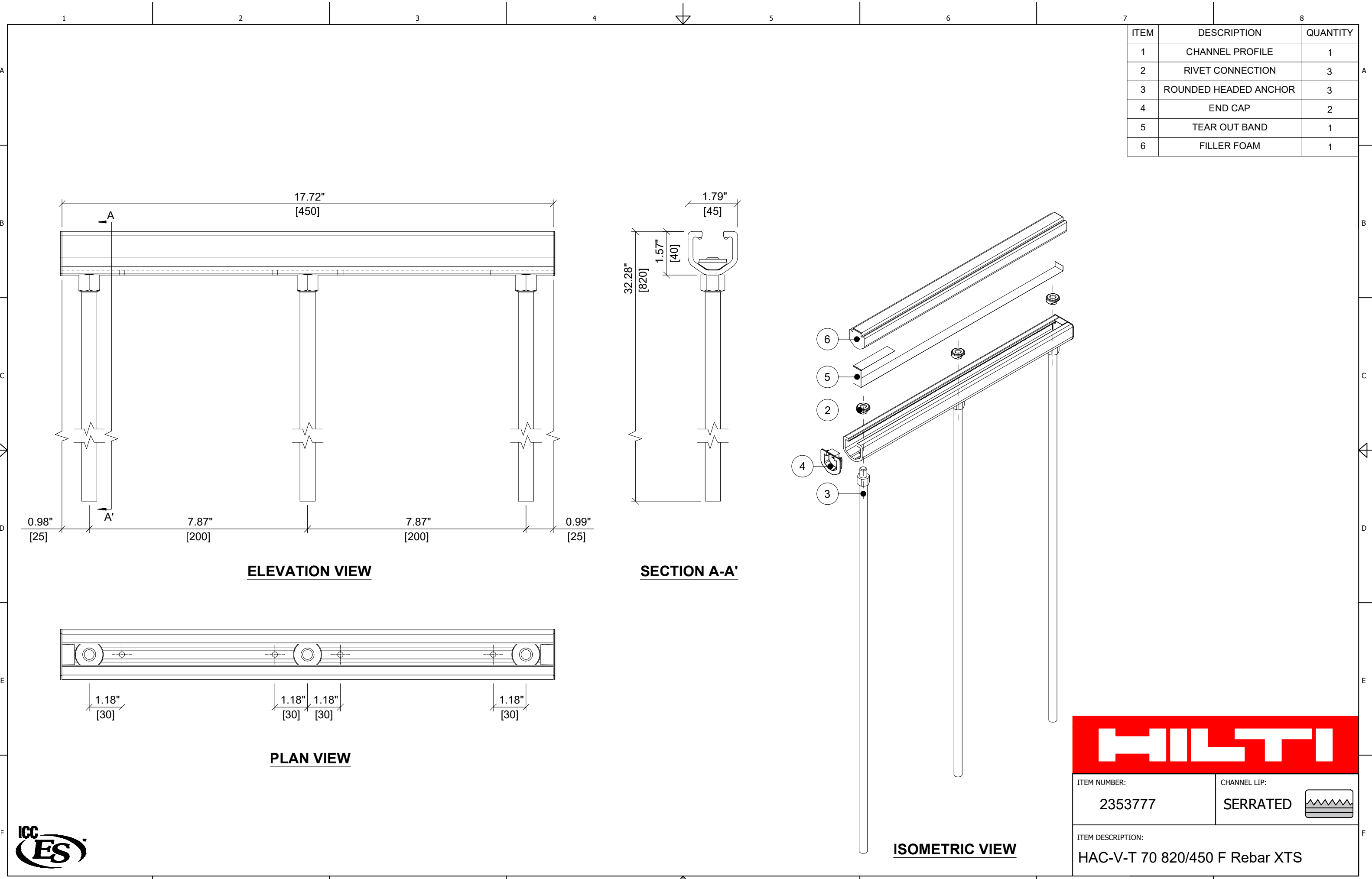
PLAN VIEW



ISOMETRIC VIEW



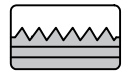
ITEM NUMBER: 2353776	CHANNEL LIP: SERRATED 
ITEM DESCRIPTION: HAC-V-T 70 820/400 F Rebar XTS	



ITEM	DESCRIPTION	QUANTITY
1	CHANNEL PROFILE	1
2	RIVET CONNECTION	3
3	ROUNDED HEADED ANCHOR	3
4	END CAP	2
5	TEAR OUT BAND	1
6	FILLER FOAM	1

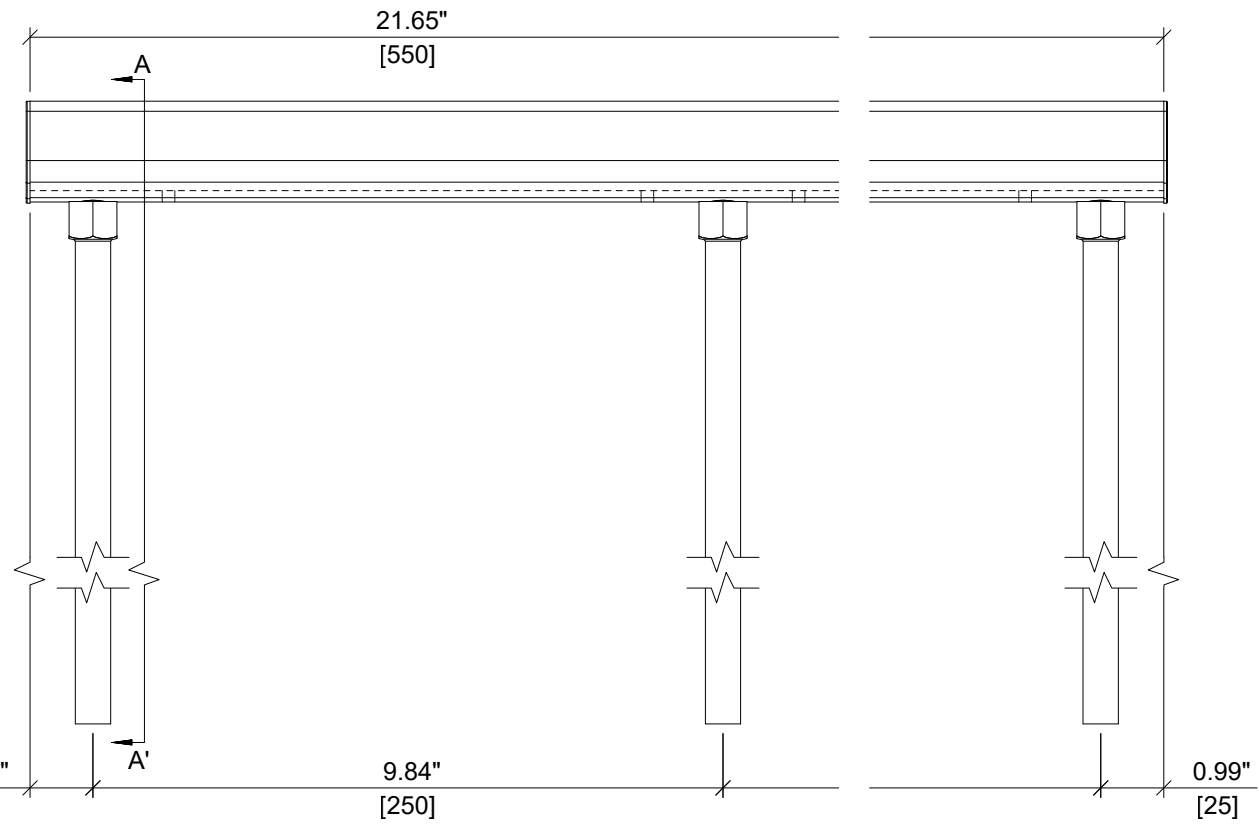


ITEM NUMBER: 2353777

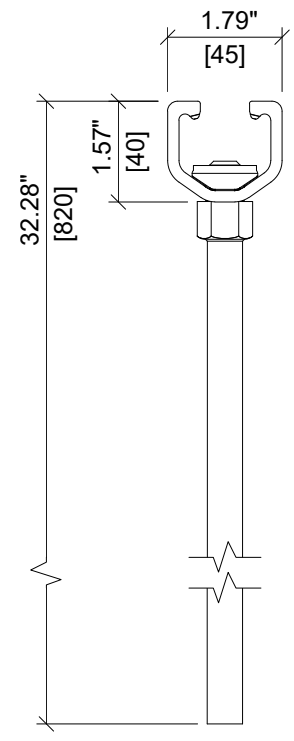
CHANNEL LIP: SERRATED 

ITEM DESCRIPTION: HAC-V-T 70 820/450 F Rebar XTS

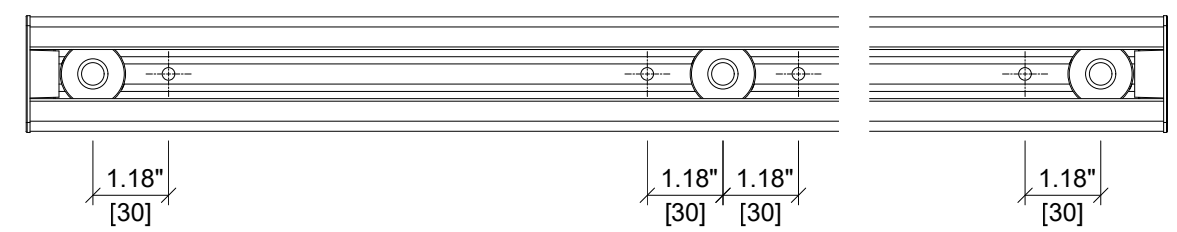
ITEM	DESCRIPTION	QUANTITY
1	CHANNEL PROFILE	1
2	RIVET CONNECTION	3
3	ROUNDED HEADED ANCHOR	3
4	END CAP	2
5	TEAR OUT BAND	1
6	FILLER FOAM	1



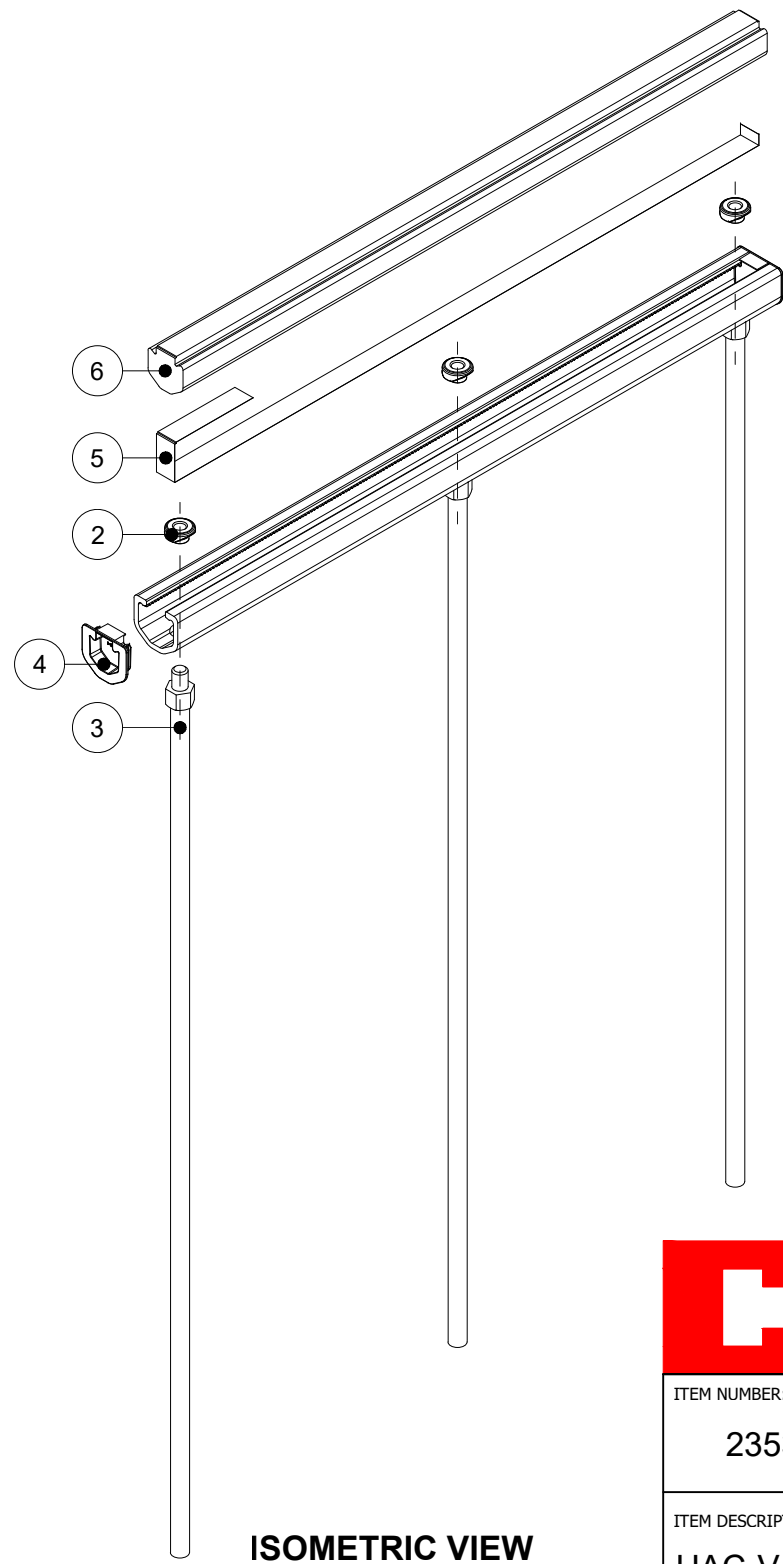
ELEVATION VIEW



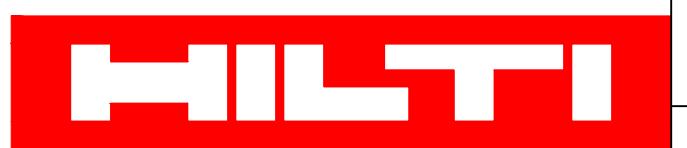
SECTION A-A'

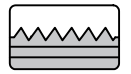


PLAN VIEW



ISOMETRIC VIEW



ITEM NUMBER: 2353778	CHANNEL LIP: SERRATED 
ITEM DESCRIPTION: HAC-V-T 70 820/550 F Rebar XTS	