

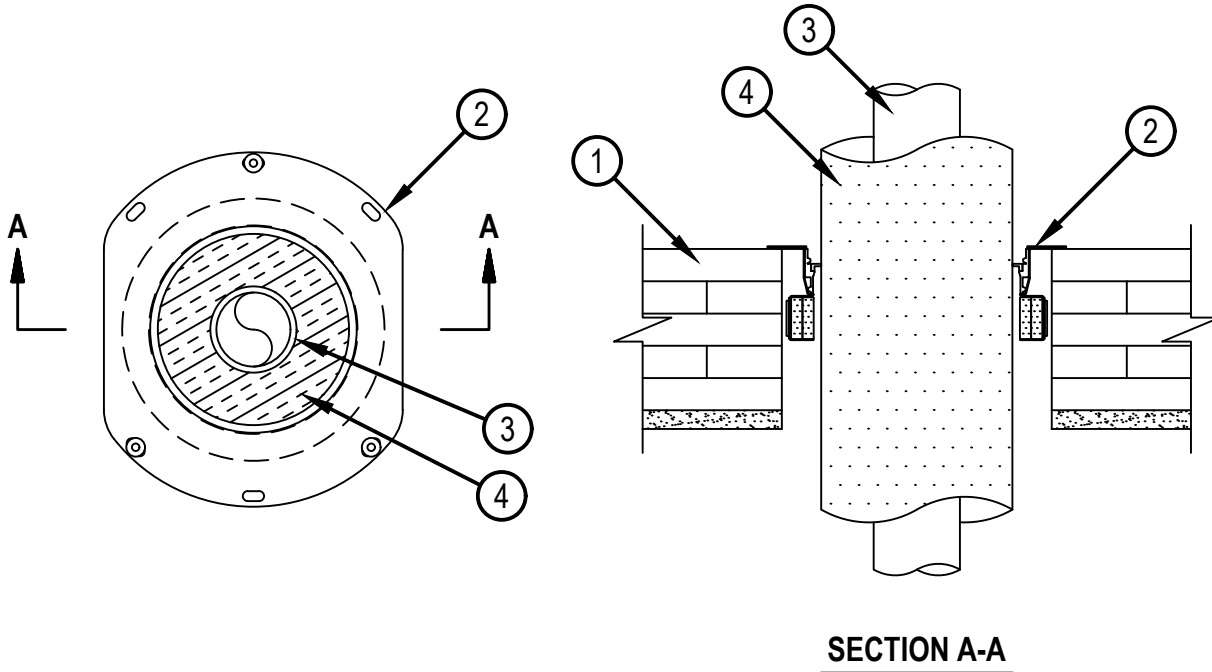


Classified by  
Underwriters Laboratories, Inc.  
to UL 1479 and CAN/ULC-S115

## System No. F-G-5001

FG 5001

ANSI/UL1479 (ASTM E814)	CAN/ULC S115
F Rating — 1-1/2 Hr	F Rating — 1-1/2 Hr
T Ratings — 0 and 1 Hr (See Item 4)	FT Ratings — 0 and 1 Hr (See Item 4)
	FH Rating — 1-1/2 Hr
	FTH Ratings — 0 and 1 Hr (See Item 4)



**SECTION A-A**

1. Floor Assembly -- Minimum 6-7/8 in. (175 mm) thick, 5 ply cross laminated timber (CLT) panel, labeled CLT 175-5S, 220-7S, 244-7S Grade E1 in accordance with ANSI/APA PRG 320 as required by Chapter 6 of International Building Code (IBC) for Type IVA, IVB or IVC construction. The required hourly rating of the CLT floor shall be determined in accordance with Chapter 16 of the National Design Specification (NDS). Additional information regarding the use of CLT as permitted in the IBC is located in the XHEZ Guide Information. The indicated or calculated fire resistance rating of the assembly (Type IV A, B or C) to meet or exceed the F rating of the firestop system. CLT Panel to have a max through opening diameter of 9 in. (229 mm) to accommodate the penetrant.
2. Firestop Device\* -- Drop-in firestop device installed in core-drilled wood floor assembly in accordance with accompanying installation instructions. The firestop device flange should be secured to the top surface of the floor with three 1/4 in. (6 mm) diam by min 1 in. (25.4 mm) long wood screws and 1 in. steel washers (installed in a triangular fashion through holes provided). The firestop devices shall be installed as detailed in the following table :



**Hilti Firestop Systems**

Reproduced by HILTI, Inc. Courtesy of  
Underwriters Laboratories, Inc.  
September 28, 2022

# System No. F-G-5001

FG 5001

Nom Pipe or Tube (Item 4) Diam, In. (mm)	Insulation Type (Item 5) and Thickness, In. (mm)	Firestop Device	Core Hole Diam, In. (mm)	Floor Thickness In. (mm) (Min to Max or Nominal)
1/2 (13)	1 (25) Glass Fiber	CFS-DID 2"MD	4 (102)	Nom. 6-7/8 (175)
1 (25)	1 (25) Glass Fiber	CFS-DID 3"MD	5 (102)	Nom. 6-7/8 (175)
1 (25)	1-1/2 (38) Glass Fiber	CFS-DID 4"MD	6 (152)	Nom. 6-7/8 (175)
2 (51)	1 (25) Glass Fiber	CFS-DID 4"MD	6 (152)	Nom. 6-7/8 (175)
2 (51)	2 (51) Glass Fiber	CFS-DID 6"MD	9 (229)	Nom. 6-7/8 (175)
4 (102)	1 (25) Glass Fiber	CFS-DID 6"MD	9 (229)	Nom. 6-7/8 (175)
1/2 (13)	1 (25) Glass Fiber	CFS-DID 2"C	4 (102)	6-7/8 (175) to 9-1/2 (244)
1 (25)	1 (25) Glass Fiber	CFS-DID 3"C	5 (102)	6-7/8 (175) to 9-1/2 (244)
1 (25)	1-1/2 (38) Glass Fiber	CFS-DID 4"C	6 (152)	6-7/8 (175) to 9-1/2 (244)
2 (51)	1 (25) Glass Fiber	CFS-DID 4"C	6 (152)	6-7/8 (175) to 9-1/2 (244)
2 (51)	2 (51) Glass Fiber	CFS-DID 6"C	9 (229)	6-7/8 (175) to 9-1/2 (244)
4 (102)	1 (25) Glass Fiber	CFS-DID 6"C	9 (229)	6-7/8 (175) to 9-1/2 (244)

HILTI CONSTRUCTION CHEMICALS, DIV OF HILTI INC -- CFS-DID 2"MD, CFS-DID 2"C, CFS-DID 3"MD, CFS-DID 3"C, CFS-DID 4"MD, CFS-DID 4"C

3. Through Penetrant -- One metallic pipe or tubing to be installed within the firestop device. Pipe or tubing to be rigidly supported on both sides of floor assembly. The following types of pipe or tubing may be used:

- A. Steel Pipe -- Nom 4 in. (102 mm) diam (or smaller) Schedule 10 (or heavier) steel pipe.
- B. Iron Pipe -- Nom 4 in. (102 mm) diam (or smaller) cast or ductile pipe.
- C. Copper Tubing -- Nom 4 in. (102 mm) diam (or smaller) Type L (or heavier) copper tubing.
- D. Copper Pipe -- Nom 4 in. (102 mm) diam (or smaller) Regular (or heavier) copper pipe.

4. Pipe Covering\* -- Nom 1, 1-1/2 or 2 in. (25, 38 or 51 mm) thick hollow cylindrical heavy density (min 3.5 pcf or 56 kg/m<sup>3</sup>) glass fiber units, jacketed on the outside with an all service jacket. Longitudinal joints sealed with metal fasteners or factory-applied SSL tape. Transverse joints secured with metal fasteners or with butt tape supplied with the product.

When 2 in. (51mm) insulation is used, T, FT and FTH Rating is 1 hr

See Pipe and Equipment Covering-Materials (BRGU) category in the Building Materials Directory for names of manufacturers. Any pipe covering material meeting the above specifications and bearing the UL Classification Marking with a Flame Spread Index of 25 or less and a Smoke Developed Index of 50 or less may be used.

\* Indicates such products shall bear the UL or cUL Certification Mark for jurisdictions employing the UL or cUL Certification (such as Canada), respectively.



**Hilti Firestop Systems**

Reproduced by HILTI, Inc. Courtesy of  
Underwriters Laboratories, Inc.  
September 28, 2022