

UL/cUL SYSTEM NO. FF-D-1126

FIRE-RATED JOINT THROUGH CONCRETE FLOOR ASSEMBLY

ASSEMBLY RATING = 2-HR.

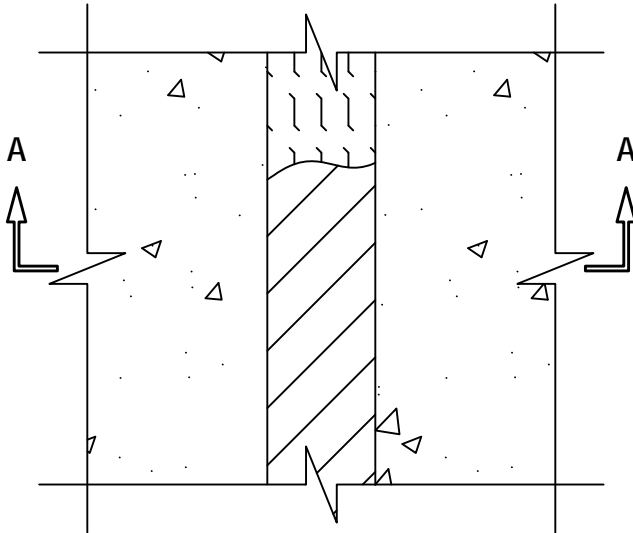
L-RATING AT AMBIENT = LESS THAN 1 CFM / LIN FT

L-RATING AT 400°F = LESS THAN 1 CFM / LIN FT

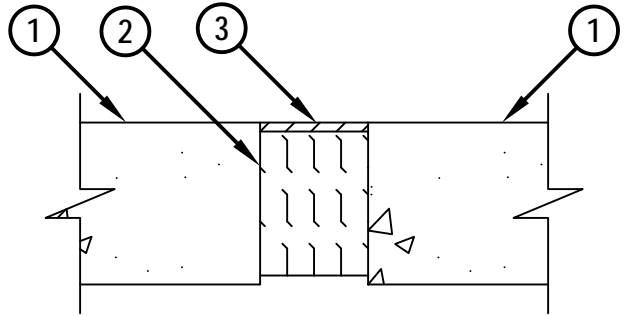
CLASS II MOVEMENT CAPABILITIES - 33% COMPRESSION OR EXTENSION

FFD1126a.092313

TOP VIEW

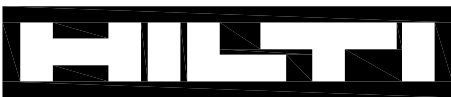


SECTION A-A



1. LIGHTWEIGHT OR NORMAL WEIGHT CONCRETE FLOOR ASSEMBLY (MINIMUM 4-1/2" THICK) (2-HR. FIRE-RATING).
2. MINIMUM 4" THICKNESS MINERAL WOOL SAFING (MIN. 4 PCF DENSITY) COMPRESSED 50% AND RECESSED TO ACCOMMODATE FIRESTOP SEALANT.
3. MINIMUM 1/4" DEPTH HILTI CFS-S SIL GG OR CFS-S SIL SL FIRESTOP SILICONE SEALANT FLUSH WITH THE TOP SURFACE OF FLOOR.

NOTE : MAXIMUM WIDTH OF JOINT = 3".



Hilti Firestop Systems

HILTI, Inc.
Tulsa, Oklahoma USA (800) 879-8000

Sheet	1 of 1
Scale	3/16" = 1"
Date	Sep. 23, 2013

Drawing No.

**FFD
1126a**

Saving Lives through Innovation and Education