

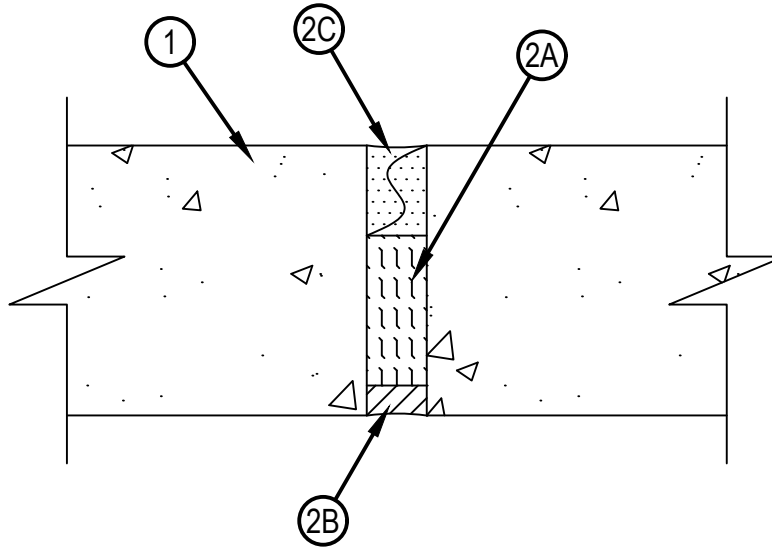


Classified by  
Underwriters Laboratories, Inc.  
to UL 2079 and CAN/ULC-S115

# System No. WW-S-0097

1600 SMM  
WW-S-0097

| ANSI/UL2079             | CAN/ULC S115             |
|-------------------------|--------------------------|
| Assembly Rating — 2 Hr  | F Rating — 2 Hr          |
| Joint Width — 1 In. Max | FT Rating — 2 Hr         |
|                         | FH Rating — 2 Hr         |
|                         | FTH Rating — 2 Hr        |
|                         | Joint Width — 25 mm Max. |



1. Wall Assembly —Min 4-1/2 in. (112 mm) thick reinforced lightweight or normal weight (100-150 pcf or 1600-2400 kg/m3) structural concrete. Wall may also be constructed of any UL Classified Concrete Blocks\*.

See Concrete Blocks (CAZT) category in the Fire Resistance Directory for names of manufacturers.

2. Joint System —Min width of joint is 1/2 in. (13 mm) and the Max width of joint is 1 in. (25.4 mm). The joint system shall consist of forming and fill materials, as follows:

A. Packing Material —Min 3 in. (76 mm) thickness of min 4 pcf (64 kg/m3) mineral wool batt insulation firmly packed into joint opening as a permanent form. Packing material recessed from each surface of the wall as required to accommodate the required thickness of fill materials (Item 2B and Item 2C.).

B. Fill, Void or Cavity Material\* — Sealant —Min 1/2 in. (13 mm) thickness of fill material applied within the joint on exterior of wall, flush with wall surface.

DOW SILICONES CORP — DOWSIL™ 790 Sealant, 795 Sealant  
MOMENTIVE PERFORMANCE MATERIALS — Pensil 300 Sealant  
PECORA CORP — Dynatrol II Caulk, 864 Silicone Caulk

C. Fill, Void or Cavity Material\* — CFS-TTS MD Top Track Seals installed as a factory supplied foam seal within the joint. Both sides of Hilti CFS-TTS MD are inserted into the joint by rolling the product onto itself with the opposing contour ends nesting together. The top surface of the product shall be flush with top of the wall. For walls thicker than 4-1/2 in (114 mm), the product may be installed recessed from surface of interior wall as required to accommodate the required thickness of packing material (Item 2A). Note: IF CFS-TTS MD OS is used, it must be installed with both sides of the foam barrier as supplied from the manufacturer.

HILTI CONSTRUCTION CHEMICALS, DIV OF HILTI INC — CFS-TTS MD OS or CFS-TTS MD 600 Firestop Top Track Seal

\* Indicates such products shall bear the UL or cUL Certification Mark for jurisdictions employing the UL or cUL Certification (such as Canada), respectively.



**Hilti Firestop Systems**

Reproduced by HILTI, Inc. Courtesy of  
Underwriters Laboratories, Inc.  
December, 30 2022