

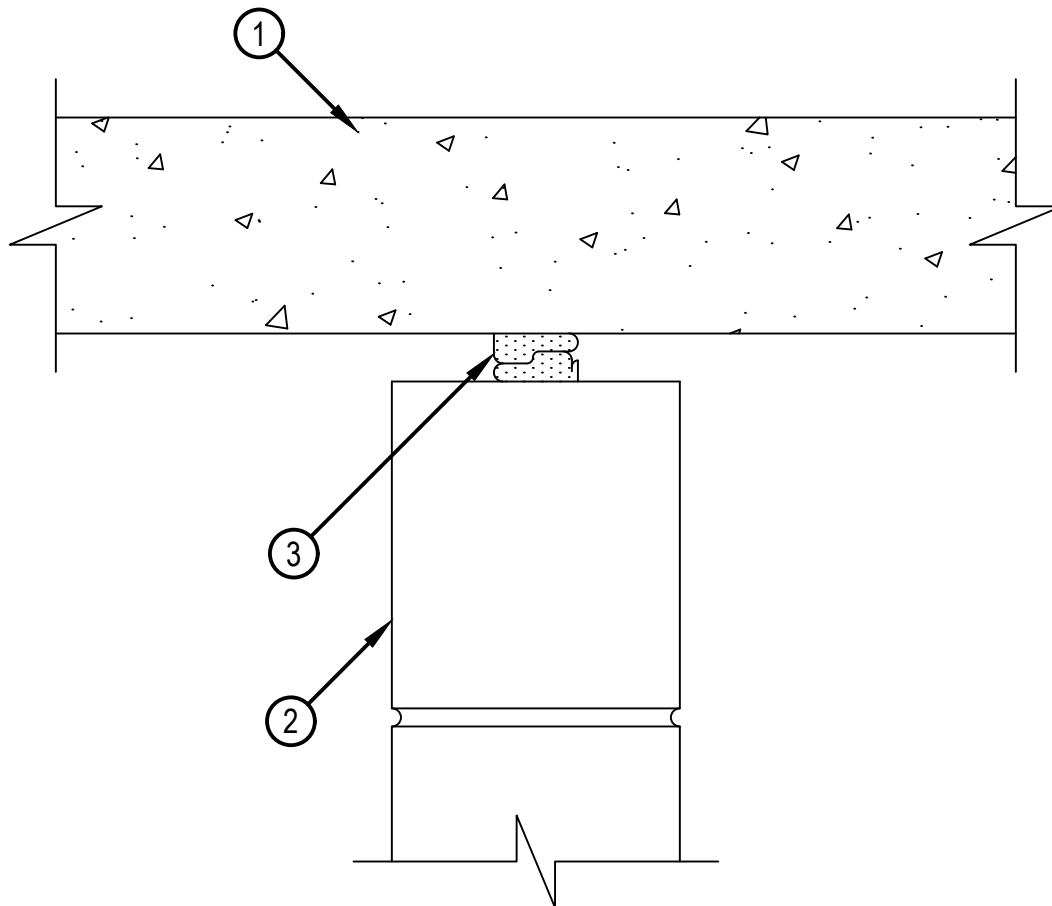


Classified by
Underwriters Laboratories, Inc.
to UL 2079 and CAN/ULC-S115

System No. HW-D-0965

HWD 0965

ANSI/UL2079	CAN/ULC S115
Assembly Ratings — 2 Hr	F Ratings — 2 Hr
Nominal Joint Width — Min. 1/2 to Max. 1-1/8 In. (See Item 2)	FT Ratings — 2 Hr
Class II Movement Capabilities — See Table 1	FH Ratings — 2 Hr
	FTH Ratings — 2 Hr
	Nominal Joint Width — Min. 13 to Max. 29 mm (See Item 2)
	Class II Movement Capabilities — See Table 1



Reproduced by HILTI, Inc. Courtesy of
Underwriters Laboratories, Inc.
December, 30 2022

System No. HW-D-0965

HW-D-0965

1. Floor Assembly — Min 4-1/2 in. (114 mm) thick reinforced lightweight or normal weight (100-150 pcf or 1600-2400 kg/m³) structural concrete.
2. Wall Assembly — Min 4-1/2 in. (114 mm) thick steel reinforced lightweight or normal weight (100-150 pcf or 1600-2400 kg/m³) structural concrete. Wall may also be constructed of any UL Classified Concrete Blocks*.
See Concrete Blocks (CAZT) category in the Fire Resistance Directory for names of manufacturers.
3. Joint System —Max separation between bottom of floor assembly and top of concrete wall at time of installation is 1-1/8 in. (29 mm). The joint system is designed to accommodate compression and extension in table 1. The joint system shall consist of the following:
 - A. Fill, Void or Cavity Material* - CFS-TTS MD Top Track Seals installed as a factory supplied foam seal within the joint. Both sides of Hilti CFS-TTS MD are inserted into the joint by rolling the product onto itself with the opposing contour ends nesting together. The product to be installed from either side of the wall centered within the wall. For walls thicker than 4-1/2 in (114 mm), the product may be installed offset from center to have a min 1-1/4 in. (32 mm) recessed from both sides of the wall. Note: IF CFS-TTS MD OS is used, it must be installed with both sides of the foam barrier as supplied from the manufacturer.HILTI CONSTRUCTION CHEMICALS, DIV OF HILTI INC — CFS-TTS MD OS or CFS-TTS MD 600 Firestop Top Track Seal

Table 1

Joint Width, in (mm)	Compression, %	Extension, %
1 (25)	50	12.5
1-1/8 (29)	44	0

* Indicates such products shall bear the UL or cUL Certification Mark for jurisdictions employing the UL or cUL Certification (such as Canada), respectively.