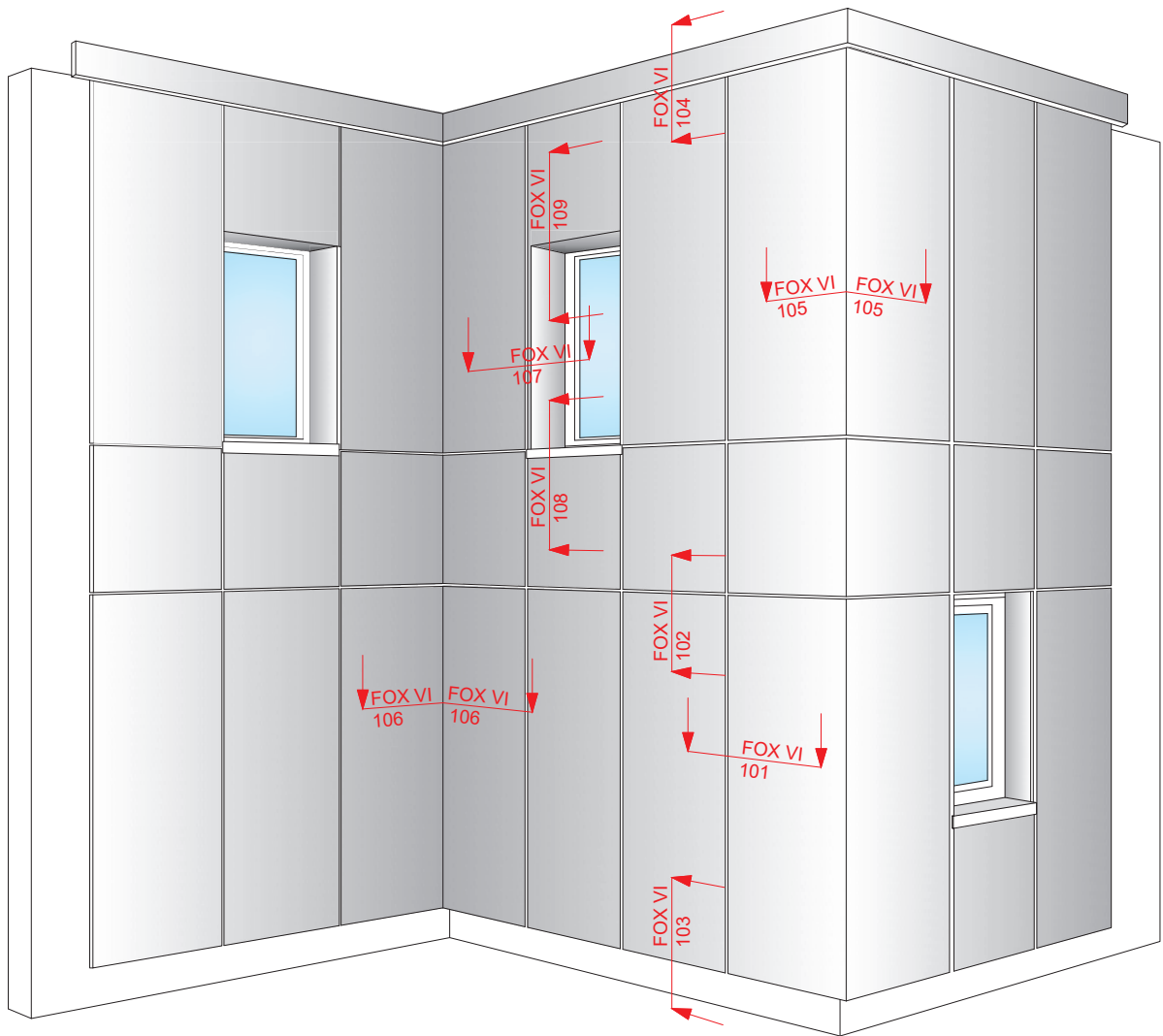




MFT FOX VI-2L- HANGERS WITH SELF-TAPPING SCREWS FOR HPL

Hilti facade system

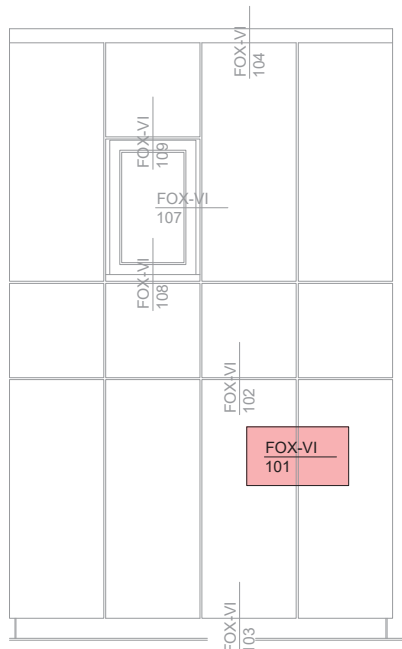
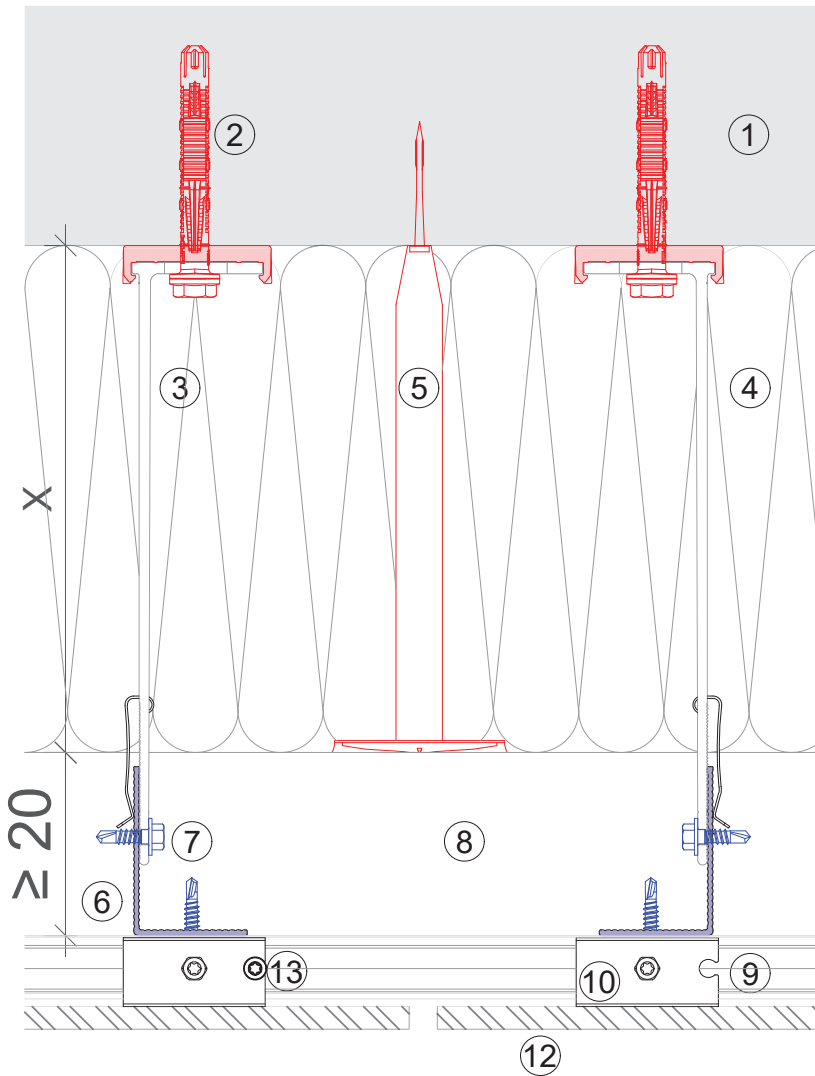
View of cladding



CONTENTS:

| | | |
|--------|-----|--------------------|
| FOX VI | 101 | Horizontal section |
| FOX VI | 102 | Vertical section |
| FOX VI | 103 | Bottom detail |
| FOX VI | 104 | Top detail |
| FOX VI | 105 | Outside corner |
| FOX VI | 106 | Inside corner |
| FOX VI | 107 | Window - reveal |
| FOX VI | 108 | Window - sill |
| FOX VI | 109 | Window - lintel |

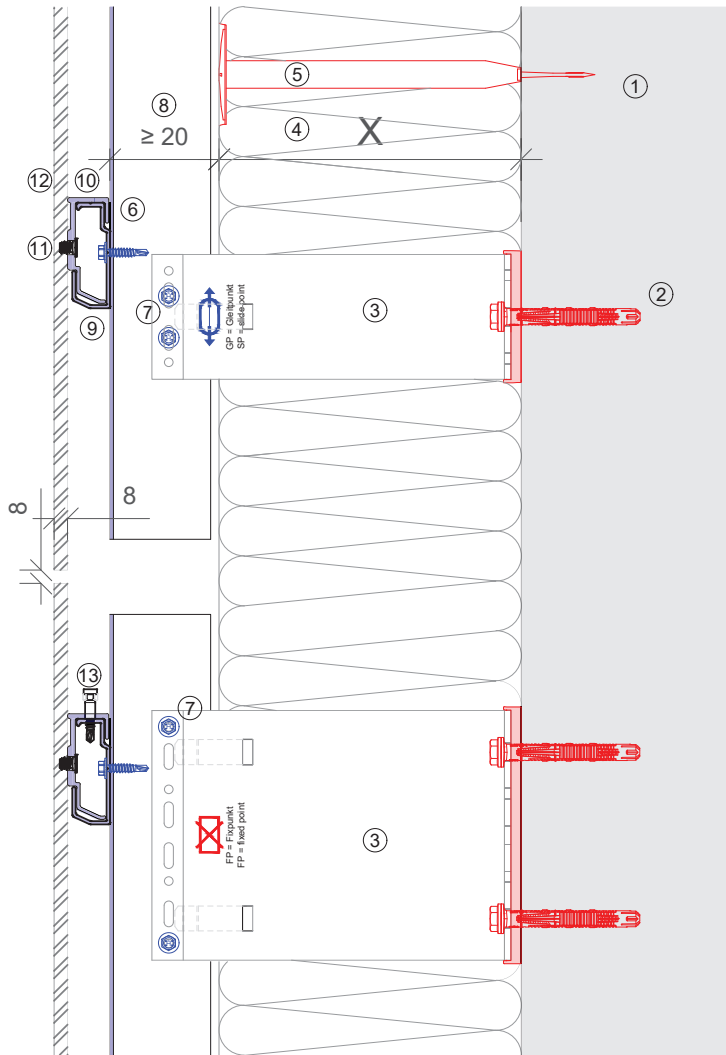
HORIZONTAL SECTION



Legend:

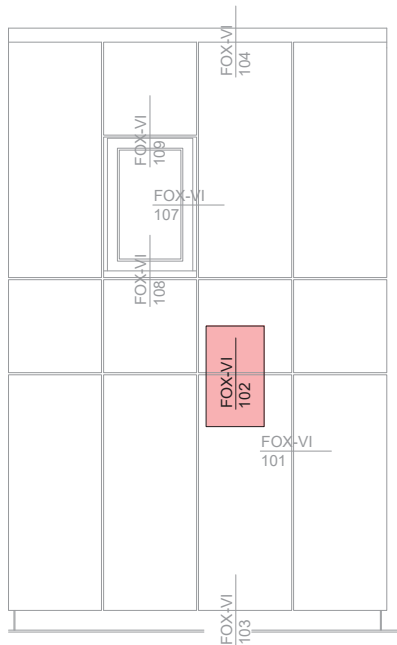
- ① Base Material
- ② Anchor acc. to static
- ③ Bracket + isolator
- ④ Insulation
- ⑤ Fixing insulation
- ⑥ Profile
- ⑦ Self-drilling screw
- ⑧ Ventilation gap
- ⑨ Load-bearing hanger profile
- ⑩ Hanger
- ⑪ Concealed screw fastening
- ⑫ Cladding
- ⑬ Fixing screw

VERTICAL SECTION-PANEL JOINT

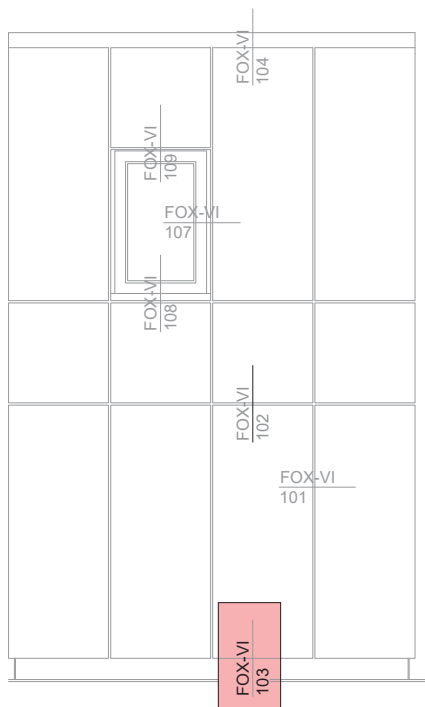
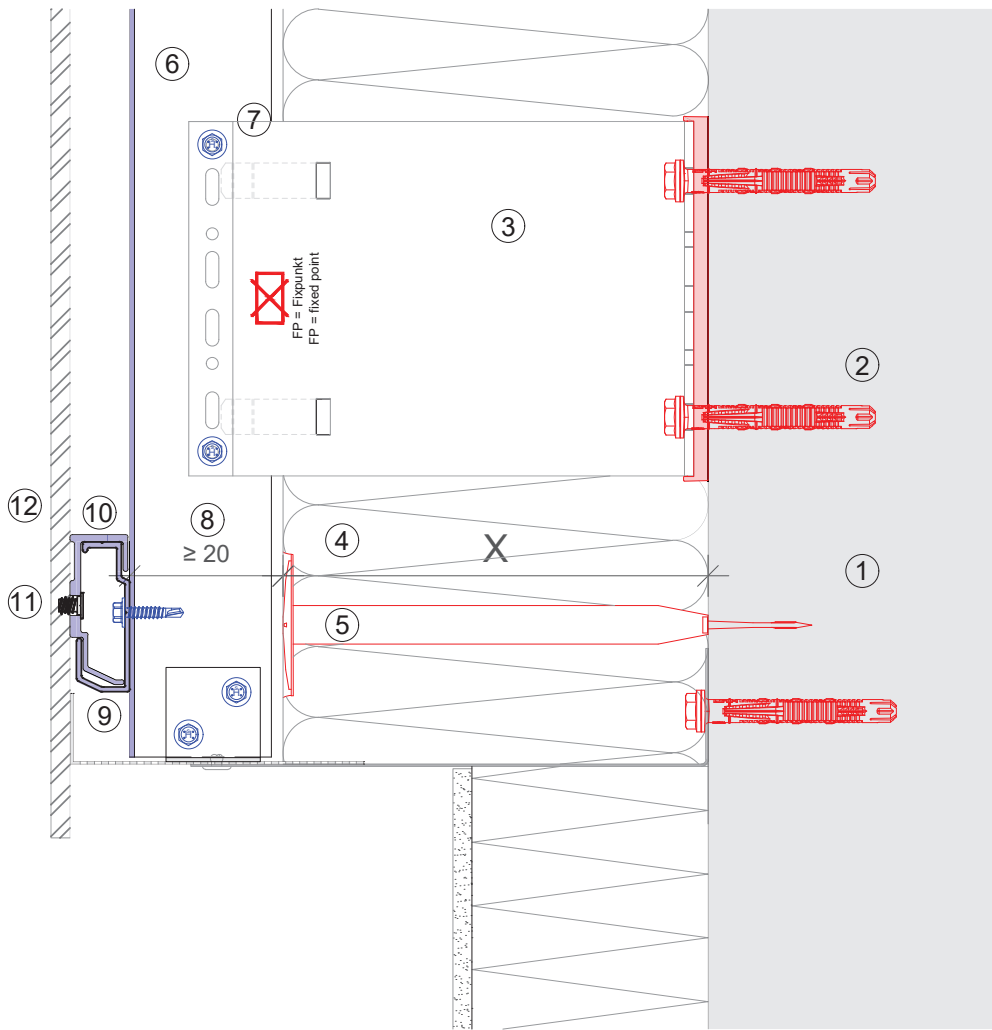


Legend:

- ① Base Material
- ② Anchor acc. to static
- ③ Bracket + isolator
- ④ Insulation
- ⑤ Fixing insulation
- ⑥ Profile
- ⑦ Self-drilling screw
- ⑧ Ventilation gap
- ⑨ Load-bearing hanger profile
- ⑩ Hanger
- ⑪ Concealed screw fastening
- ⑫ Cladding
- ⑬ Fixing screw



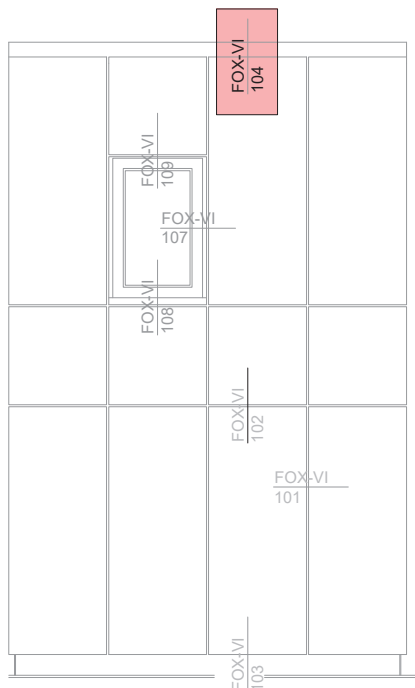
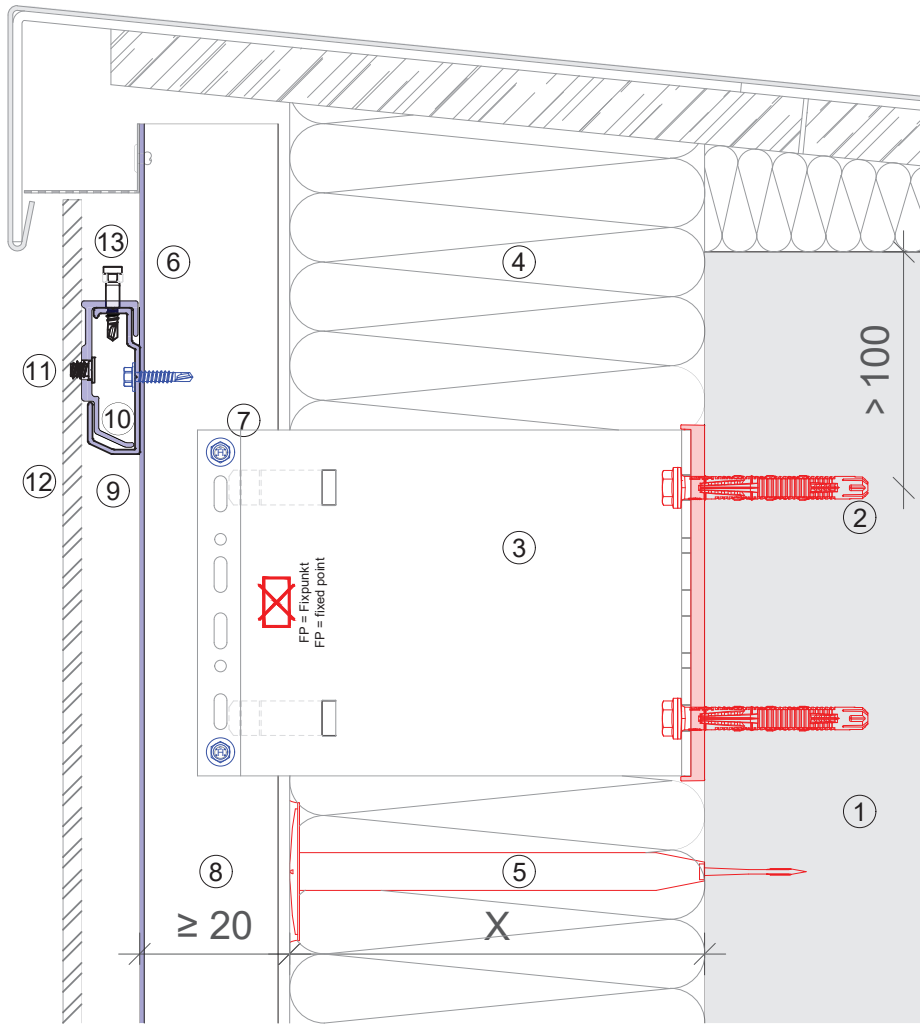
VERTICAL SELECTION - BASE MATERIAL



Legend:

- ① Base Material
- ② Anchor acc. to static
- ③ Bracket + isolator
- ④ Insulation
- ⑤ Fixing insulation
- ⑥ Profile
- ⑦ Self-drilling screw
- ⑧ Ventilation gap
- ⑨ Load-bearing hanger profile
- ⑩ Hanger
- ⑪ Concealed screw fastening
- ⑫ Cladding

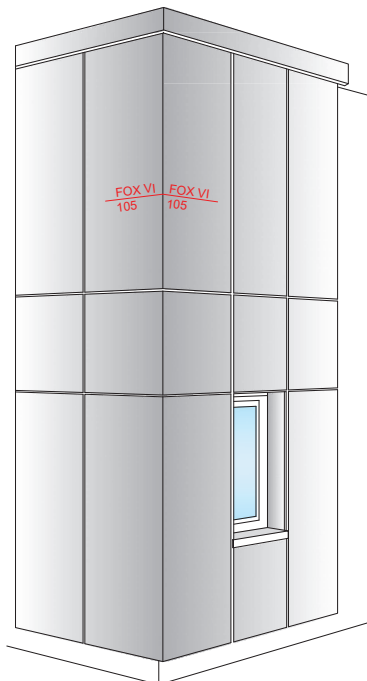
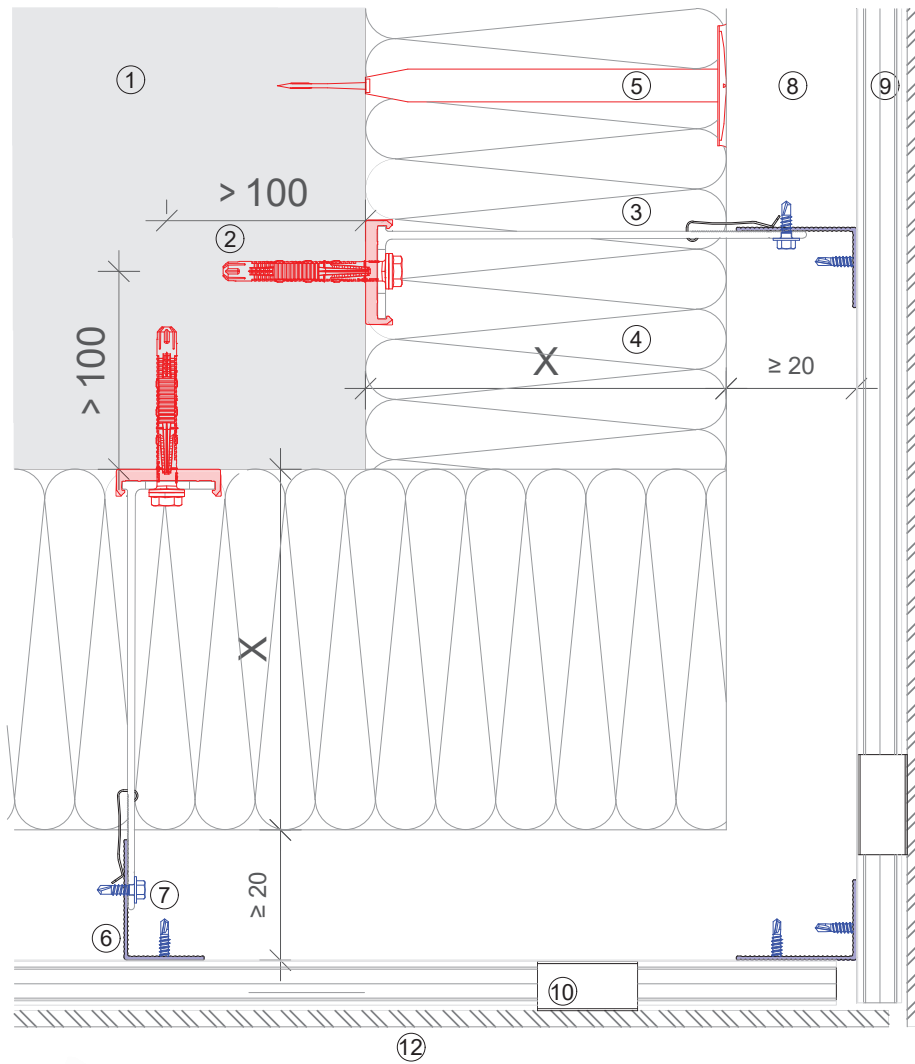
VERTICAL SECTION - HEAD DETAIL



Legend:

- ① Base Material
- ② Anchor acc. to static
- ③ Bracket + isolator
- ④ Insulation
- ⑤ Fixing insulation
- ⑥ Profile
- ⑦ Self-drilling screw
- ⑧ Ventilation gap
- ⑨ Load-bearing hanger profile
- ⑩ Hanger
- ⑪ Concealed screw fastening
- ⑫ Cladding
- ⑬ Fixing screw

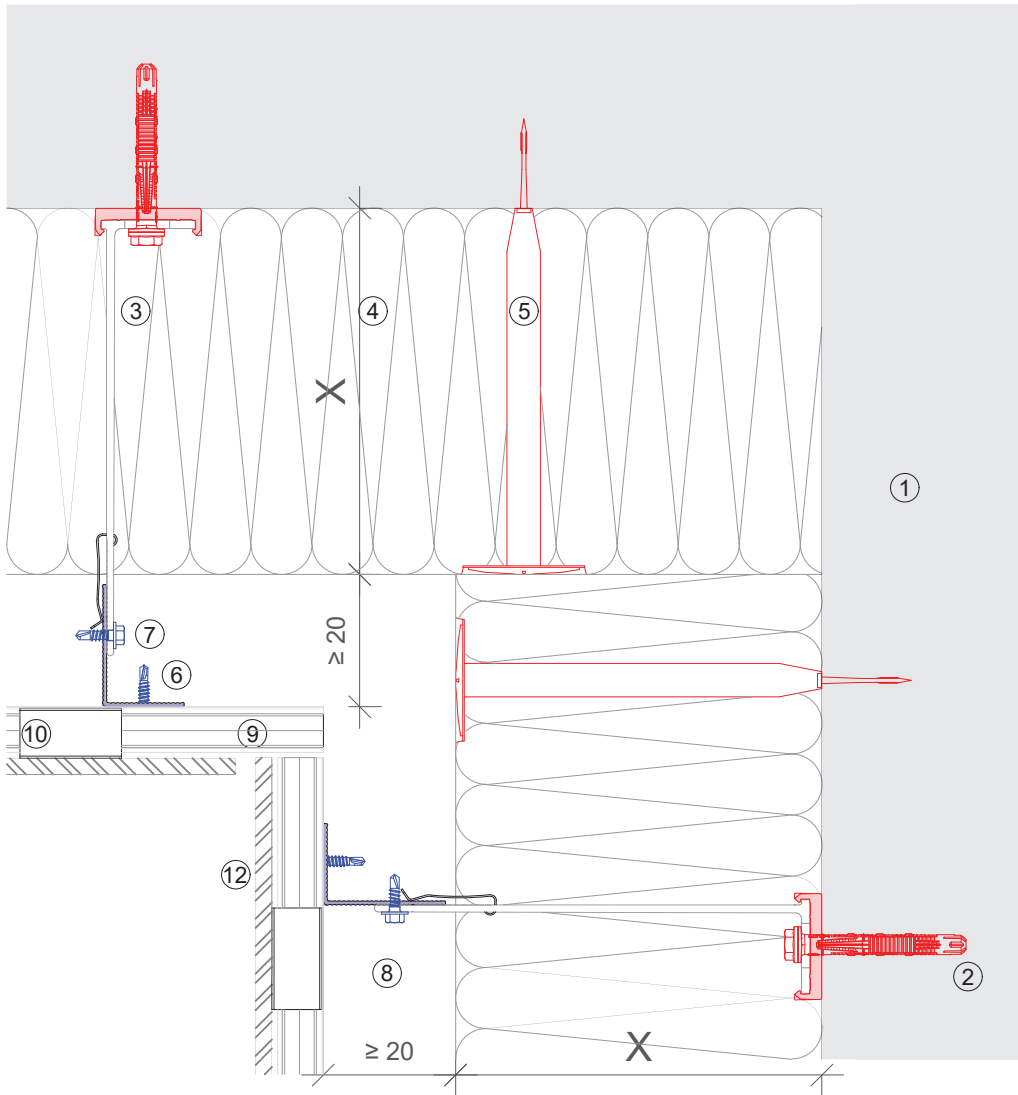
HORIZONTAL SECTION - EXTERNAL CORNER



Legend:

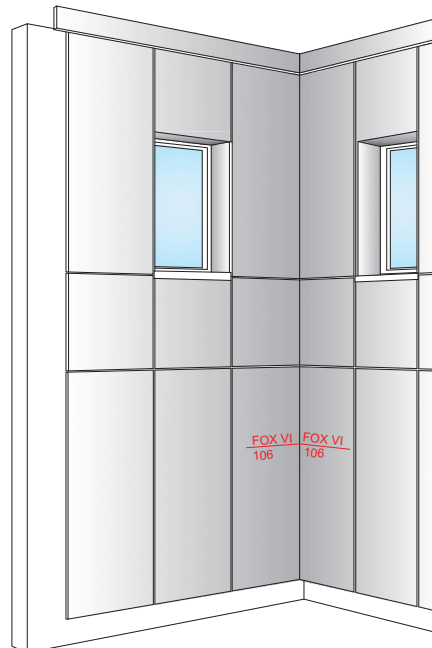
- ① Base Material
- ② Anchor acc. to static
- ③ Bracket + isolator
- ④ Insulation
- ⑤ Fixing insulation
- ⑥ Profile
- ⑦ Self-drilling screw
- ⑧ Ventilation gap
- ⑨ Load-bearing hanger profile
- ⑩ Hanger
- ⑪ Concealed screw fastening
- ⑫ Cladding

HORIZONTAL SECTION - INTERNAL CORNER

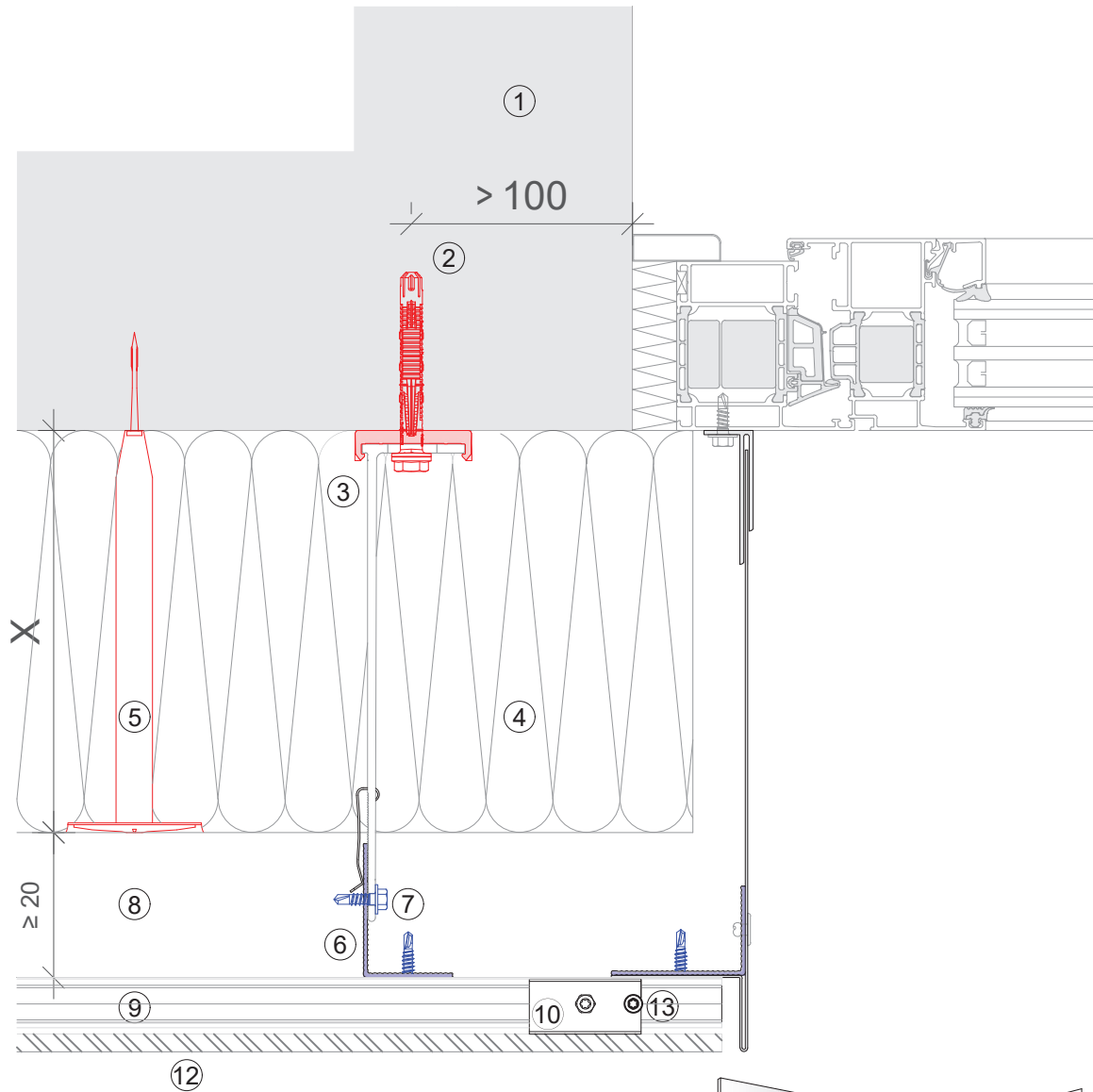


Legend:

- ① Base Material
- ② Anchor acc. to static
- ③ Bracket + isolator
- ④ Insulation
- ⑤ Fixing insulation
- ⑥ Profile
- ⑦ Self-drilling screw
- ⑧ Ventilation gap
- ⑨ Load-bearing hanger profile
- ⑩ Hanger
- ⑪ Concealed screw fastening
- ⑫ Cladding

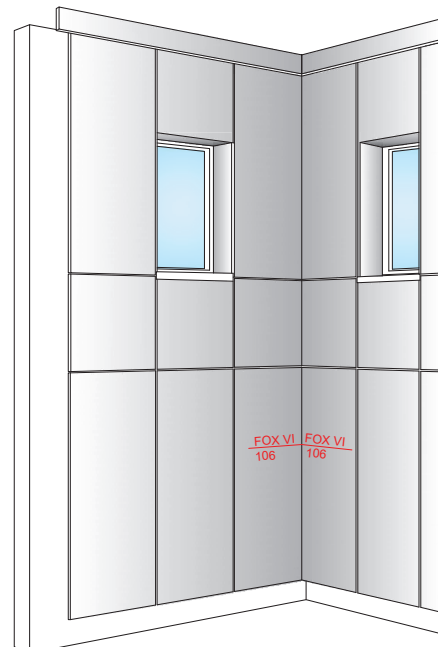


HORIZONTAL SECTION - WINDOW - REVEAL

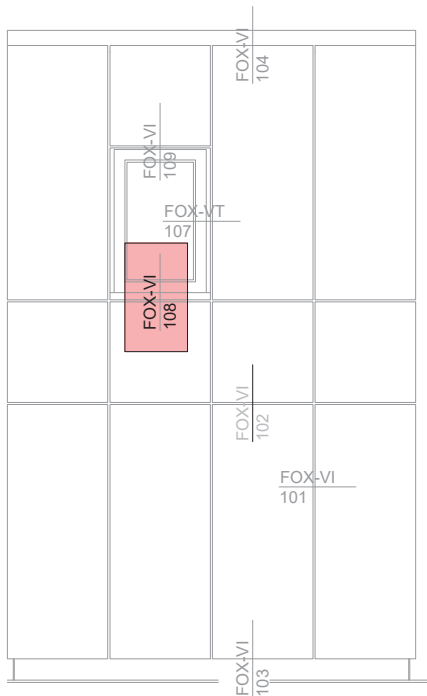
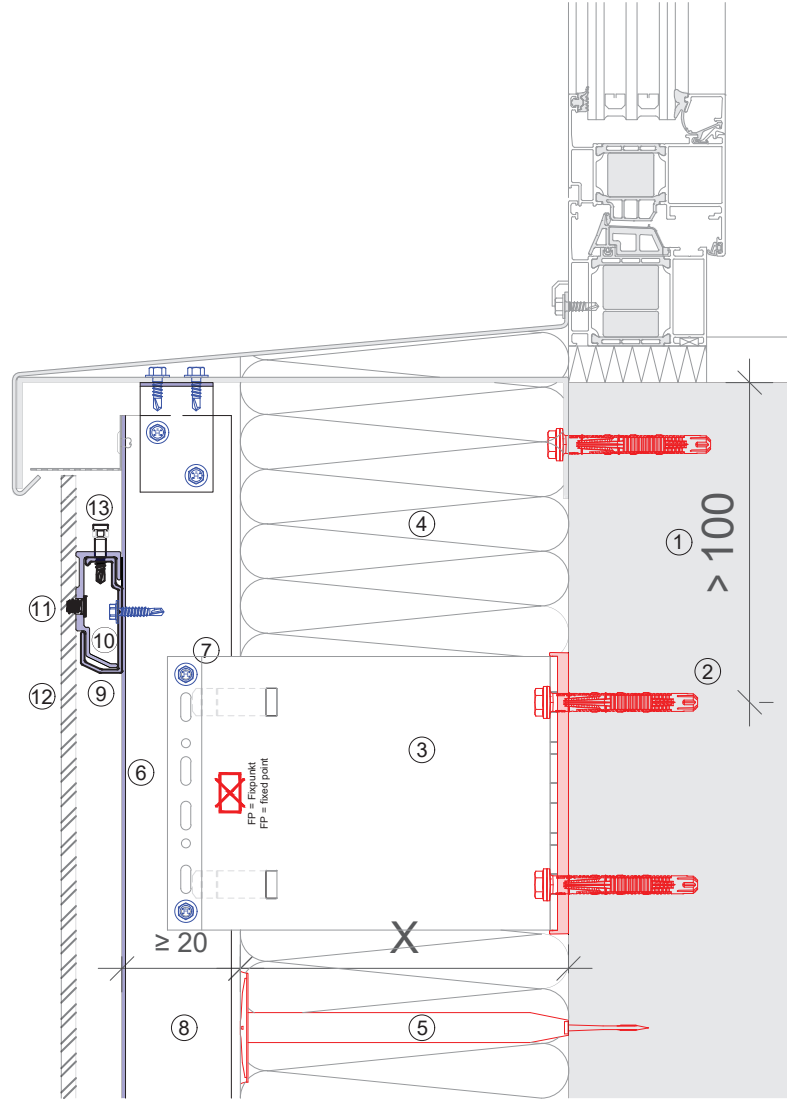


Legend:

- ① Base Material
- ② Anchor acc. to static
- ③ Bracket + isolator
- ④ Insulation
- ⑤ Fixing insulation
- ⑥ Profile
- ⑦ Self-drilling screw
- ⑧ Ventilation gap
- ⑨ Load-bearing hanger profile
- ⑩ Hanger
- ⑪ Concealed screw fastening
- ⑫ Cladding



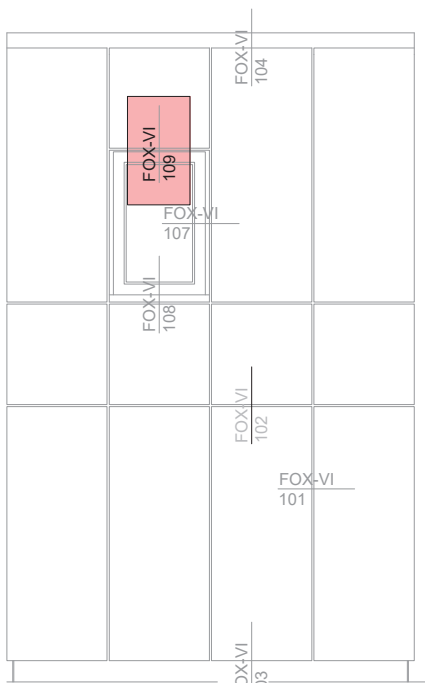
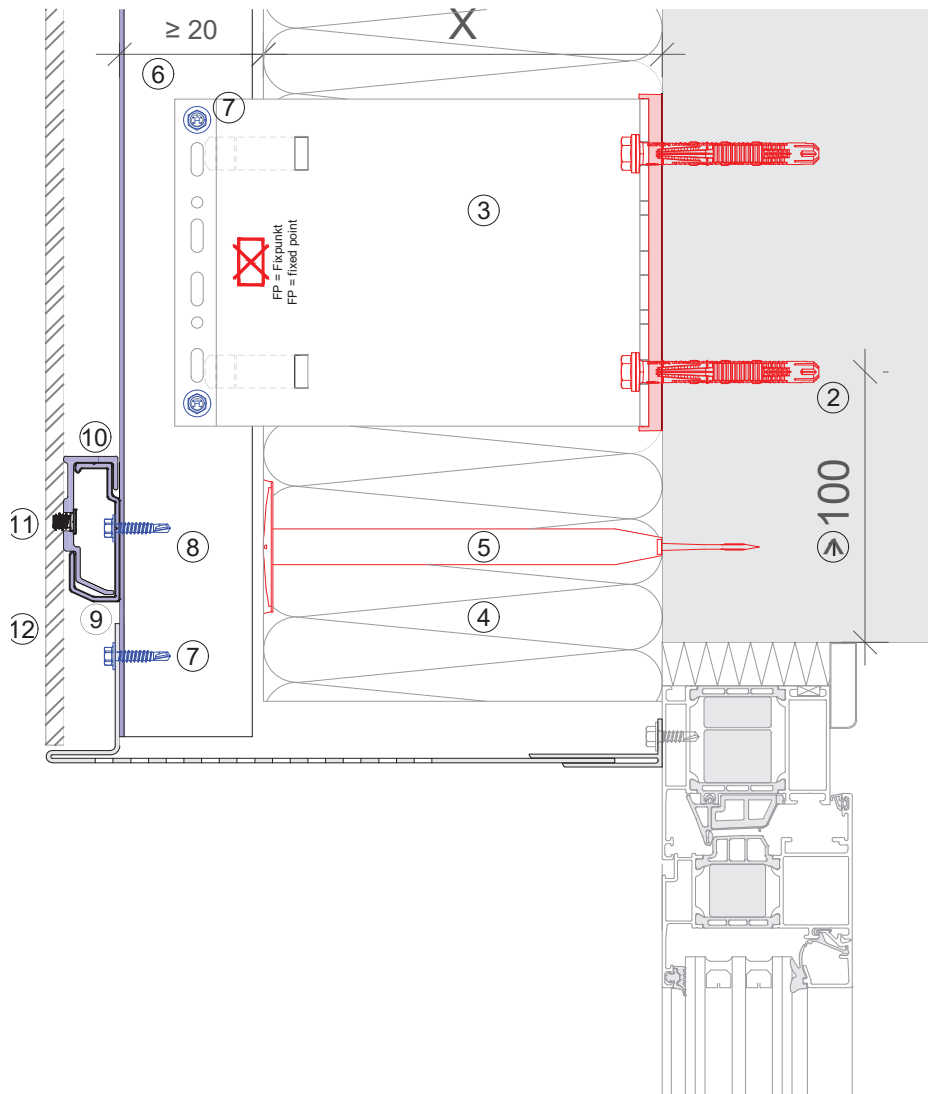
VERTICAL SECTION - WINDOW - SILL



Legend:

- ① Base Material
- ② Anchor acc. to static
- ③ Bracket + isolator
- ④ Insulation
- ⑤ Fixing insulation
- ⑥ Profile
- ⑦ Self-drilling screw
- ⑧ Ventilation gap
- ⑨ Load-bearing hanger profile
- ⑩ Hanger
- ⑪ Concealed screw fastening
- ⑫ Cladding
- ⑬ Fixing screw

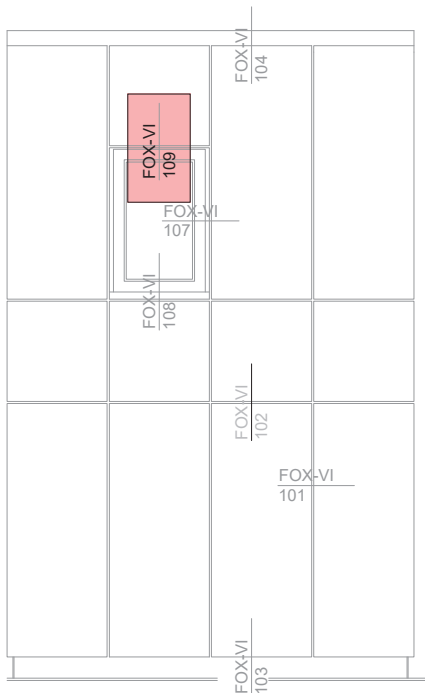
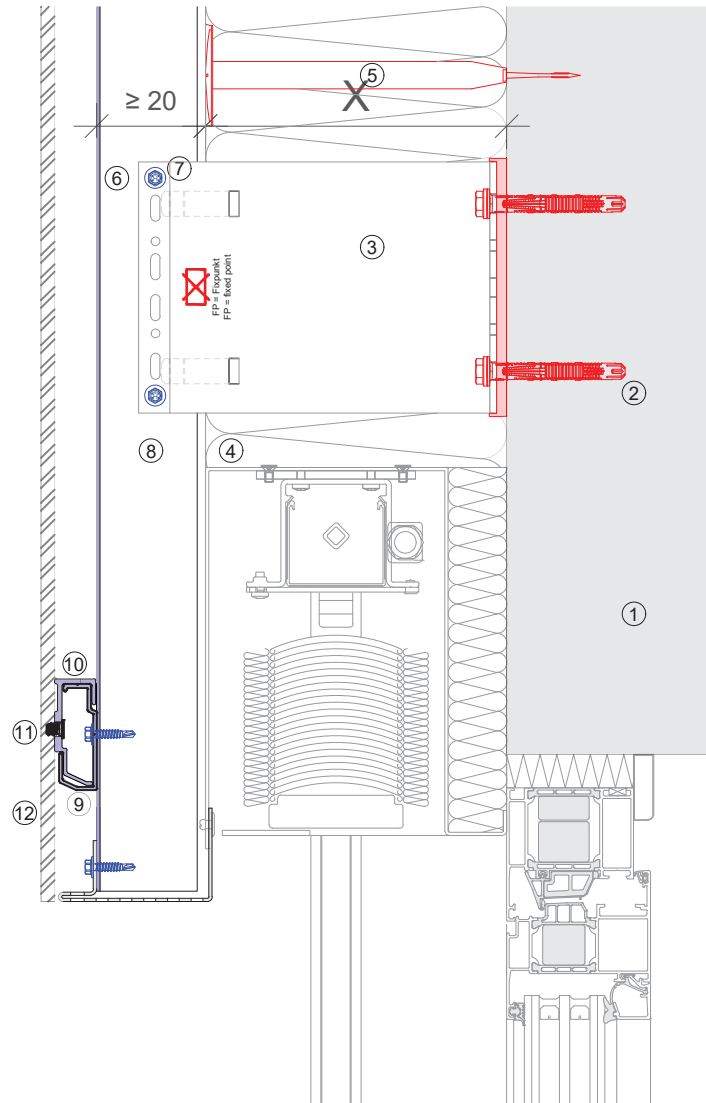
VERTICAL SECTION - WINDOW - LINTEL



Legend:

- ① Base Material
- ② Anchor acc. to static
- ③ Bracket + isolator
- ④ Insulation
- ⑤ Fixing insulation
- ⑥ Profile
- ⑦ Self-drilling screw
- ⑧ Ventilation gap
- ⑨ Load-bearing hanger profile
- ⑩ Hanger
- ⑪ Concealed screw fastening
- ⑫ Cladding

VERTICAL SECTION - WINDOW - LINTEL



Legend:

- ① Base Material
- ② Anchor acc. to static
- ③ Bracket + isolator
- ④ Insulation
- ⑤ Fixing insulation
- ⑥ Profile
- ⑦ Self-drilling screw
- ⑧ Ventilation gap
- ⑨ Load-bearing hanger profile
- ⑩ Hanger
- ⑪ Concealed screw fastening
- ⑫ Cladding

The data contained herein was current as of the date of publication. Updates and changes may be made based on later testing. If verification is needed that the data is still current, please contact the Hilti Technical Support Specialists at 1-877-749-6337. All published load values herein represent the results of testing by Hilti or test organizations. Because of variations in materials, on-site testing may be necessary to determine performance at any specific site.



Hilti, Inc.
1-800-879-8000 | en español 1-800-879-5000
www.hilti.com

Hilti (Canada) Corporation
1-800-363-4458
www.hilti.ca