

UL SYSTEM NO. W-L-2844

PLASTIC PIPE THROUGH GYPSUM WALL ASSEMBLY

F-RATING = 1-HR. OR 2-HR.

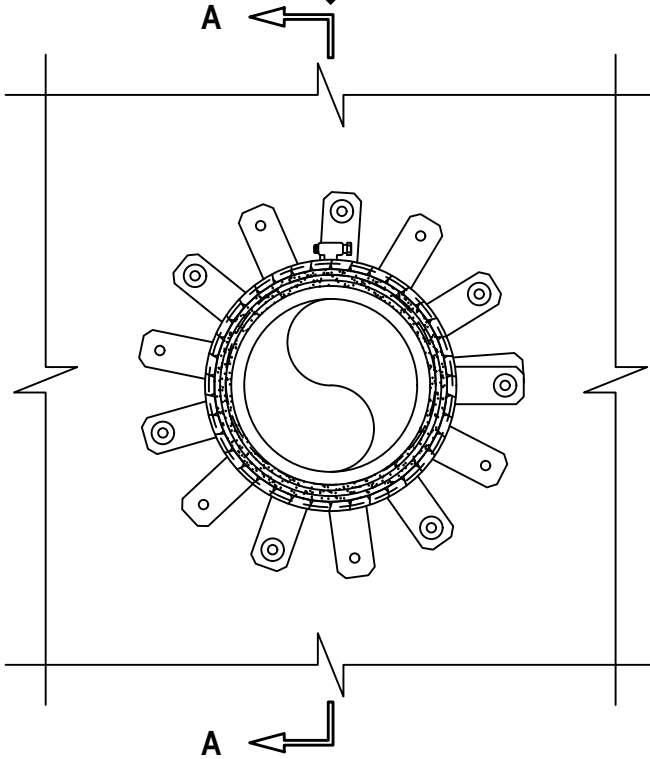
T-RATING = 1-HR. OR 2-HR.

L-RATING AT AMBIENT = 3 CFM / SQ FT

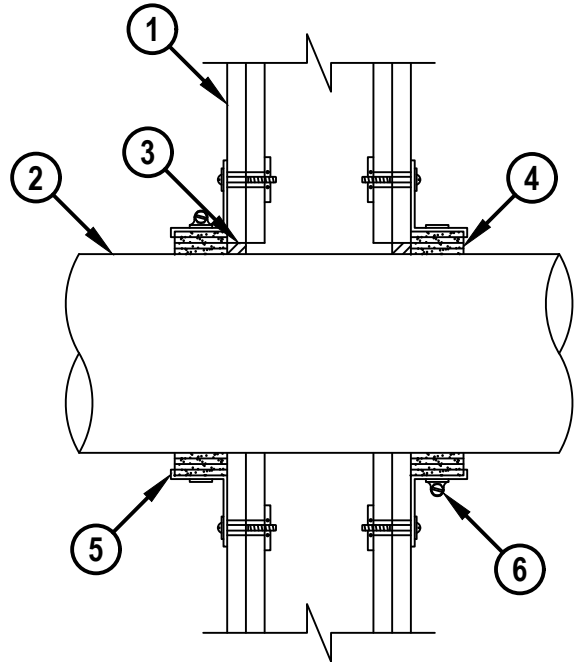
L-RATING AT 400°F = LESS THAN 1 CFM / SQ FT

WL2844a.031523

FRONT VIEW



SECTION A-A



HILTI, Inc.
Plano, Texas USA (800) 879-8000

Sheet	1 of 2
Scale	5/32" = 1"
Date	Mar. 15, 2023

Drawing No.

**WL
2844a**

Saving Lives through Innovation and Education

UL SYSTEM NO. W-L-2844

PLASTIC PIPE THROUGH GYPSUM WALL ASSEMBLY

F-RATING = 1-HR. OR 2-HR.

T-RATING = 1-HR. OR 2-HR.

L-RATING AT AMBIENT = 3 CFM / SQ FT

L-RATING AT 400°F = LESS THAN 1 CFM / SQ FT

WL2844a.031523

1. GYPSUM WALL ASSEMBLY (UL/cUL CLASSIFIED U300, U400, V400, OR W400 SERIES) (1-HR. OR 2-HR. FIRE-RATING) (2-HR. SHOWN) TO INCLUDE THE FOLLOWING CONSTRUCTION FEATURES :
 - A. [NOT SHOWN] WOOD STUDS TO CONSIST OF NOMINAL 2" x 4" LUMBER (SPACED MAXIMUM 16" OC). STEEL STUDS TO BE MINIMUM 3-5/8" WIDE (SPACED MAXIMUM 24" OC).
 - B. NOMINAL 5/8" THICK GYPSUM WALLBOARD. TYPE, NUMBER OF LAYERS, AND SHEET ORIENTATION AS SPECIFIED IN THE INDIVIDUAL UL DESIGN.
2. PENETRATING ITEM TO BE ONE OF THE FOLLOWING NONMETALLIC PIPES :
 - A. MAXIMUM 6" NOMINAL DIAMETER PVC PLASTIC PIPE (SCHEDULE 80 OR 40) (CLOSED OR VENTED PIPING SYSTEM).
 - B. MAXIMUM 6" NOMINAL DIAMETER CPVC PLASTIC PIPE (SCHEDULE 80 OR 40) (CLOSED OR VENTED PIPING SYSTEM).
3. MINIMUM 5/8" DEPTH HILTI FS-ONE MAX INTUMESCENT FIRESTOP SEALANT.
4. HILTI CP 648E WRAP STRIP (NOMINAL 3/16" THICK x 1-3/4" WIDE) CONTINUOUSLY WRAPPED AROUND OUTER CIRCUMFERENCE OF THE PIPE, COVERING FOUR TIMES, WITH ENDS BUTTED AND HELD IN PLACE WITH TAPE (MASKING OR ALUMINUM). WRAP STRIP TO BE TIGHTLY BUTTED AGAINST WALL SURFACES.
5. HILTI 1-3/4" RETAINING COLLAR WRAPPED OVER THE WRAP STRIPS, OVERLAPPING MINIMUM 1". EVERY OTHER TAB OF RETAINING COLLAR TO BE SECURED TO BOTH SIDES OF THE WALL ASSEMBLY WITH 3/16" DIAMETER TOGGLER BOLTS WITH 1-1/4" FENDER WASHERS. AS AN ALTERNATIVE WAY OF ATTACHMENT, EVERY ANCHOR TAB OF THE RETAINING COLLAR TO BE SECURED TO BOTH SIDES OF THE WALL ASSEMBLY WITH 1-1/4" LONG LAMINATE DRYWALL SCREWS WITH 1-1/4" DIAMETER FENDER WASHERS.
6. NOMINAL 1/2" WIDE STAINLESS STEEL HOSE CLAMP FASTENED AT MID-HEIGHT OF RETAINING COLLAR OR TWO NO. 8 SHEET METAL SCREWS LOCATED AT OVERLAP LOCATION USED TO SECURE COLLAR TOGETHER.

NOTES : 1. MAXIMUM DIAMETER OF OPENING = 7".
2. ANNULAR SPACE = MINIMUM 0", MAXIMUM 3/8".



HILTI, Inc.
Plano, Texas USA (800) 879-8000

Sheet	2 of 2
Scale	-
Date	Mar. 15, 2023

Drawing No.

**WL
2844a**

Saving Lives through Innovation and Education