



The following excerpt are pages from the [North American Product Technical Guide Volume 3: Modular Support Systems Technical Guide, Edition 1](#) .

Please refer to the publication in its entirety for complete details on this product including load values, approvals/listings, general suitability, finishes, quality, etc.

To consult directly with a team member regarding our modular support system products, contact Hilti's team of technical support specialists between the hours of 7:00am – 6:00pm CST.

US: 877-749-6337 or HNATechnicalServices@hilti.com

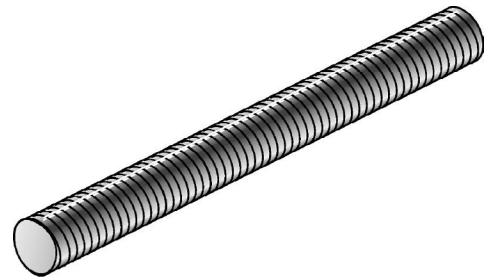
CA: 1-800-363-4458, ext. 6 or CATechnicalServices@hilti.com

4.0 ADDITIONAL HARDWARE

THREADED ROD

Material Specifications

Material	F _y , ksi (MPa)	F _u , ksi (MPa)
Carbon steel per AISI 1008 or ASTM A36	36 (248.2)	48 (330.9)



Corrosion Protection

Plain: Un-coated

Zinc: Galvanized to ASTM F1941-Fe/Zn 5A local layer min. 5 μm

Table 275 - Technical Data and Ordering Information

Description	Quantity Pack	Weight (ft/lb)	Weight Per Package (lbs)	Diameter (in)	Item No.	MSS-SP-58 ¹ Allowable Tensile Load at 650° F (lbs)	AISC ² Allowable Tensile Load (lbs)
1/4" x 6' Threaded rod (Zinc)	50	0.12	35.7	1/4	257963	300	780
1/4" x 10' Threaded rod (Zinc)	50	0.12	59.5	1/4	309386	300	780
1/4" x 10' Threaded rod (Plain)	50	0.12	59.5	1/4	309391	300	780
3/8" x 6' Threaded rod (Zinc)	25	0.3	42.6	3/8	257964	730	1,750
3/8" x 6' Threaded rod (Plain)	25	0.3	42.6	3/8	257969	730	1,750
3/8" x 10' Threaded rod (Zinc)	25	0.3	71.3	3/8	309387	730	1,750
3/8" x 10' Threaded rod (Plain)	25	0.3	71.3	3/8	309392	730	1,750
1/2" x 6' Threaded rod (Zinc)	12	0.5	38.8	1/2	257965	1350	3,110
1/2" x 10' Threaded rod (Zinc)	12	0.5	61.4	1/2	309388	1350	3,110
1/2" x 10' Threaded rod (Plain)	12	0.5	61.4	1/2	309393	1350	3,110
5/8" x 6' Threaded rod (Zinc)	8	0.84	40.0	5/8	257966	2160	4,860
5/8" x 10' Threaded rod (Zinc)	8	0.84	66.5	5/8	309389	2160	4,860
5/8" x 10' Threaded rod (Plain)	8	0.84	66.5	5/8	309394	2160	4,860
3/4" x 6' Threaded rod (Zinc)	5	1.2	36.2	3/4	257967	3230	6,700
3/4" x 10' Threaded rod (Zinc)	5	1.2	60	3/4	309390	3230	6,700

1. Per MSS-SP-58-2002, the ultimate tensile loads are based on a tensile stress of 50,000 psi multiplied by the threaded rod root area based on coarse thread UNC.

2. AISC Allowable Tensile load = $0.33 \times F_u \times A_{nom}$
 AISC Allowable Shear load = $0.17 \times F_u \times A_{nom}$