

BOTTOM OF WALL JOINT : GYPSUM WALL ASSEMBLY

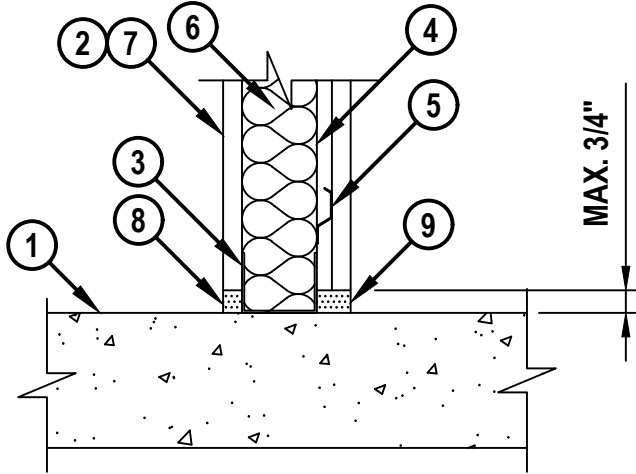
ASSEMBLY RATING = 1-HR. OR 2-HR.

L-RATING AT AMBIENT = LESS THAN 1 CFM / LIN FT

L-RATING AT 400°F = LESS THAN 1 CFM / LIN FT

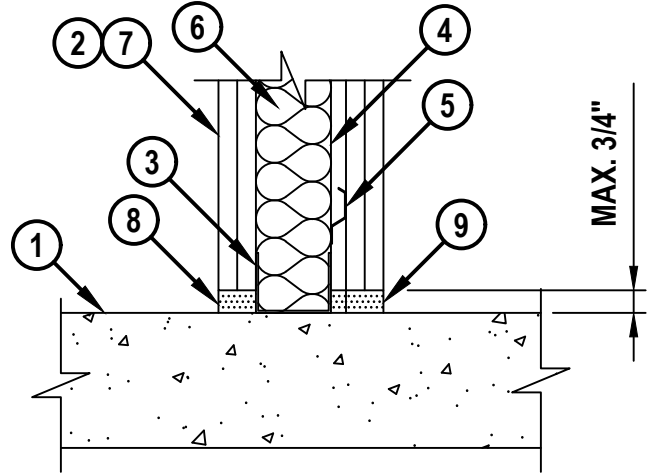
BWS0071b10.1823

CROSS-SECTIONAL VIEW



CONFIGURATION A

CROSS-SECTIONAL VIEW



CONFIGURATION B

1. CONCRETE FLOOR ASSEMBLY - THE HOURLY FIRE RATING OF THE FLOOR ASSEMBLY SHALL BE EQUAL TO OR GREATER THAN THE HOURLY RATING OF THE WALL ASSEMBLY :
 - A. LIGHTWEIGHT OR NORMAL WEIGHT CONCRETE FLOOR (MINIMUM 4-1/2" THICK).
 - B. ANY UL/cUL CLASSIFIED PRECAST (HOLLOW-CORE) CONCRETE FLOOR (MINIMUM 6" THICK).
 - C. STEEL FLOOR UNIT/FLOOR ASSEMBLY - LIGHTWEIGHT OR NORMAL WEIGHT CONCRETE FLOOR (MINIMUM 2-1/2" THICK) OVER METAL DECKING.
2. GYPSUM WALL ASSEMBLY (UL/cUL CLASSIFIED U400, V400, OR W400 SERIES) (1-HR. OR 2-HR. FIRE RATING) (1-HR SHOWN IN CONFIGURATION A., AND 2-HR SHOWN IN CONFIGURATION B).
3. FLOOR RUNNER (MIN 25 GA., FLANGE HEIGHT OF FLOOR RUNNER SHALL BE MINIMUM 1-1/4") FASTENED TO TOP SIDE OF CONCRETE FLOOR WITH STEEL FASTENERS (SPACED MAX. 24" OC).
4. STEEL STUDS (MINIMUM 2-1/2" WIDE) CUT 1/2" TO 3/4" LESS IN LENGTH THAN ASSEMBLY HEIGHT WITH BOTTOM NESTING IN, RESTING ON, AND FASTENED TO FLOOR RUNNER.
5. MAXIMUM 1/2" DEEP FURRING CHANNEL (MIN 25 GA.) SPACED MAX 24" O/C.



HILTI, Inc.
Plano, Texas USA (800) 879-8000

Sheet	1 of 2
Scale	5/32" = 1"
Date	Oct. 18, 2023

Drawing No.
**BWS
0071b**

BOTTOM OF WALL JOINT : GYPSUM WALL ASSEMBLY

ASSEMBLY RATING = 1-HR. OR 2-HR.

L-RATING AT AMBIENT = LESS THAN 1 CFM / LIN FT

L-RATING AT 400°F = LESS THAN 1 CFM / LIN FT

BWS0071b10.1823

6. ANY GLASS FIBER INSULATION BEARING THE UL CLASSIFICATION MARKING AS TO FIRE RESISTANCE OR SURFACE BURNING CHARACTERISTICS, OF A WIDTH AND THICKNESS TO COMPLETELY FILL STUD CAVITY. INSULATION BATTS FRICTION FIT TO COMPLETELY FILL ALL STUD CAVITIES. SEE BATTS AND BLANKETS (BZJZ) CATEGORY IN THE FIRE RESISTANCE DIRECTORY FOR NAMES OF MANUFACTURERS.

CONFIGURATION A (1-HOUR)

- 7. NOMINAL 5/8 THICKNESS GYPSUM WALLBOARD AS SPECIFIED IN THE INDIVIDUAL UL DESIGN.
- 8. FOR SIDE OF ASSEMBLY WITHOUT FURRING CHANNEL - HILTI CFS-BTS BOTTOM TRACK SEAL (5/8") SECURED TO STEEL FLOOR RUNNER WITH ADHESIVE BACKING AND RESTING TIGHT TO THE TOP OF THE CONCRETE FLOOR ASSEMBLY PRIOR TO THE INSTALLATION OF GYPSUM BOARD. PRODUCT TO BE COMPRESSED 1/2" AT SEAM LOCATIONS BY COMPRESSING EACH SIDE EVENLY.
- 9. FOR SIDE OF ASSEMBLY WITH FURRING CHANNEL - HILTI CFS-BTS BOTTOM TRACK SEAL (1-1/4") SECURED TO STEEL FLOOR RUNNER WITH ADHESIVE BACKING AND RESTING TIGHT TO THE TOP OF THE CONCRETE FLOOR ASSEMBLY PRIOR TO THE INSTALLATION OF GYPSUM BOARD. PRODUCT TO BE COMPRESSED 1/2" AT SEAM LOCATIONS BY COMPRESSING EACH SIDE EVENLY.

CONFIGURATION B (2-HOUR)

- 7. TWO LAYERS OF NOMINAL 5/8" THICKNESS GYPSUM WALLBOARD AS SPECIFIED IN THE INDIVIDUAL UL DESIGN.
- 8. FOR SIDE OF ASSEMBLY WITHOUT FURRING CHANNEL - HILTI CFS-BTS BOTTOM TRACK SEAL (1-1/4") SECURED TO STEEL FLOOR RUNNER WITH ADHESIVE BACKING AND RESTING TIGHT TO THE TOP OF THE CONCRETE FLOOR ASSEMBLY PRIOR TO THE INSTALLATION OF GYPSUM BOARD. PRODUCT TO BE COMPRESSED 1/2" AT SEAM LOCATIONS BY COMPRESSING EACH SIDE EVENLY.
- 9. FOR SIDE OF ASSEMBLY WITH FURRING CHANNEL - INSTALL HILTI CFS-BTS BOTTOM TRACK SEAL (5/8") SECURED TO STEEL FLOOR RUNNER WITH ADHESIVE BACKING AND RESTING TIGHT TO THE TOP OF THE CONCRETE FLOOR ASSEMBLY, THEN INSTALL HILTI CFS-BTS BOTTOM TRACK SEAL (1-1/4") TO THE OUTER SURFACE OF THE CFS-BTS (5/8") TO CREATE A TOTAL 1-7/8" DEEP FIRESTOP PRODUCT PRIOR TO THE INSTALLATION OF GYPSUM BOARD. PRODUCT TO BE COMPRESSED 1/2" AT SEAM LOCATIONS BY COMPRESSING EACH SIDE EVENLY.

NOTE : MAXIMUM WIDTH OF JOINT = 3/4".



HILTI, Inc.
Plano, Texas USA (800) 879-8000

Sheet	2 of 2
Scale	-
Date	Oct. 18, 2023

Drawing No.
**BWS
0071b**