

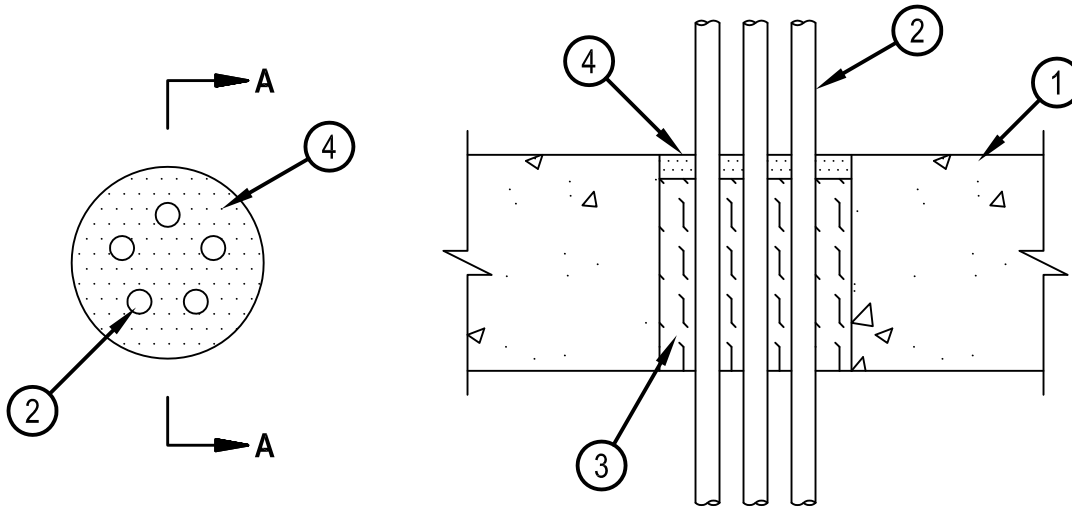


Classified by  
Underwriters Laboratories, Inc.  
to UL 1479 and CAN/ULC-S115

## System No. C-AJ-3070

CAJ 3070

ANSI/UL1479 (ASTM E814)	CAN/ULC S115
F Rating — 3 Hr	F Rating — 3 Hr
T Rating — 0 Hr	FT Rating — 0 Hr
L Rating At Ambient — Less Than 1 CFM/sq ft (See Item 4)	FH Rating — 3 Hr
L Rating At 400 F — 4 CFM/sq ft (See Item 4)	FTH Rating — 0 Hr
W Rating — Class 1 (See Item 4)	L Rating At Ambient — Less Than 1 CFM/sq ft (See Item 4)
	L Rating At 400 F — 4 CFM/sq ft (See Item 4)



### SECTION A-A

1. Floor or Wall Assembly — Min 4-1/2 in. (114 mm) thick reinforced lightweight or normal weight (100-150 pcf or 1600-2400 kg/m<sup>3</sup>) concrete floor or min 5 in. (127 mm) thick reinforced lightweight or normal weight concrete wall. Wall may also be constructed of any UL Classified Concrete Blocks \*. Max diam of opening is 4 in. (104 mm).

See Concrete Blocks (CAZT) category in the Fire Resistance Directory for names of manufacturers.

2. Cables — Max 7/C No. 12 AWG cables with polyvinyl chloride (PVC) or cross-linked polyethylene (XLPE) insulation and PVC jacket. Aggregate cross-sectional area of cables in opening to be min 7 percent to max 20 percent of the aggregate cross-sectional area of the opening. Cables to be spaced a min 1/2 in. (13 mm) apart and rigidly supported on both sides of floor or wall assembly.

3. Packing Material — Min 4 in. thickness of min 4 pcf (64 kg/m<sup>3</sup>) mineral wool batt insulation firmly packed into opening as a permanent form. Packing material to be recessed from top surface of floor or from both surfaces of wall to accommodate the required thickness of fill material.

4. Fill, Void or Cavity Material\* — Sealant — Min 1/2 in. (13 mm) thickness of fill material applied within the annulus, flush with top surface of floor or with both surfaces of wall. L Ratings apply only when FS-ONE sealant is used. W Rating applies only when CP601S, CFS-S SIL GG, CFS-S SIL SL (floors only) or CP604 sealant is used.

HILTI CONSTRUCTION CHEMICALS, DIV OF HILTI INC — CP601S, CP604, CP606, CFS-S SIL GG, CFS-S SIL SL (floors only), FS-One Sealant or FS-ONE MAX Intumescent Sealant.

\* Indicates such products shall bear the UL or cUL Certification Mark for jurisdictions employing the UL or cUL Certification (such as Canada), respectively.



**Hilti Firestop Systems**

Reproduced by HILTI, Inc. Courtesy of  
Underwriters Laboratories, Inc.

January 13, 2015