

BLANK OPENING IN CONCRETE FLOOR/WALL OR BLOCK WALL ASSEMBLY

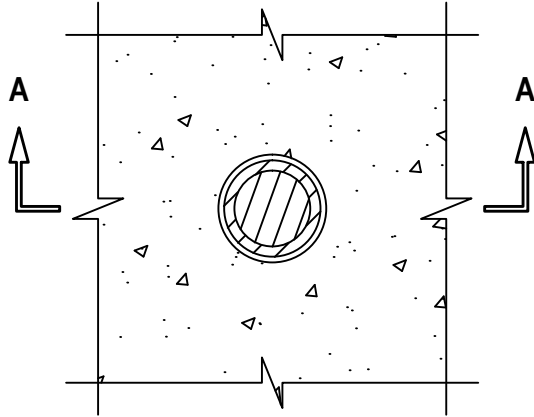
F-RATING = 2-HR.

T-RATING = 0-HR. OR 1/2-HR.

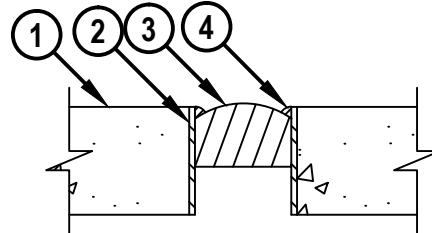
L-RATING AT AMBIENT = LESS THAN 1 CFM/SQ. FT.

L-RATING AT 400°F = LESS THAN 1 CFM/SQ. FT.

TOP VIEW



SECTION A-A



CAJ0097e-011212

1. CONCRETE FLOOR OR WALL ASSEMBLY (2-HR. FIRE-RATING) :
 - A. LIGHTWEIGHT OR NORMAL WEIGHT CONCRETE FLOOR OR WALL (MINIMUM 4-1/2" THICK).
 - B. ANY UL/cUL CLASSIFIED CONCRETE BLOCK WALL.
2. MAXIMUM 4" NOMINAL DIAMETER STEEL PIPE SLEEVE (SCHEDULE 5 OR HEAVIER) (SEE TABLE BELOW). SLEEVE MAY EXTEND MAXIMUM 2" BEYOND TOP SURFACE OF FLOOR OR BOTH SURFACES OF WALL.
3. HILTI CFS-PL FIRESTOP PLUG OR HILTI CP 658T FIRESTOP PLUG INSERTED INTO PIPE SLEEVE AND RECESSED TO ACCOMMODATE FIRESTOP PUTTY.
4. MINIMUM 1/2" BEAD HILTI CP 618 FIRESTOP PUTTY STICK APPLIED AROUND PERIPHERY OF FIRESTOP PLUG WHERE IT INTERFACES WITH INSIDE OF PIPE SLEEVE.

SLEEVE/OPENING DIAM IN. (MM)	NOM PLUG SIZE, IN. (MM)	
	CP 658T	CFS-PL
1-1/2 (38)	2.5 (63) *	2 (51) *
2 (51)	2.5 (63) *	2 (51)
3 (76)	4 (102) *	4 (102) *
4 (102)	4 (102)	4 (102)

* CUT WEDGE FROM PLUG TO FIT SLEEVE/OPENING SIZE. SEE HILTI INSTALLATION INSTRUCTIONS FOR SPECIFIC SIZE OF WEDGE CUTS REQUIRED.

NOTES : 1. NOMINAL DIAMETER OF OPENING = 1-1/2", 2", 3", OR 4".
 2. HILTI FIRESTOP PLUG AND CP 618 FIRESTOP PUTTY STICK ARE REQUIRED ON BOTH SIDES OF A WALL ASSEMBLY.
 3. SLEEVE IS OPTIONAL WHEN HILTI CFS-PL FIRESTOP PLUG IS USED.



HILTI, Inc.
Tulsa, Oklahoma USA (800) 879-8000

Sheet	1 of 1
Scale	1/8" = 1"
Date	Jan. 12, 2012

Drawing No.
**CAJ
0097e**