

BLANK OPENING THROUGH CONCRETE FLOOR/WALL OR BLOCK WALL

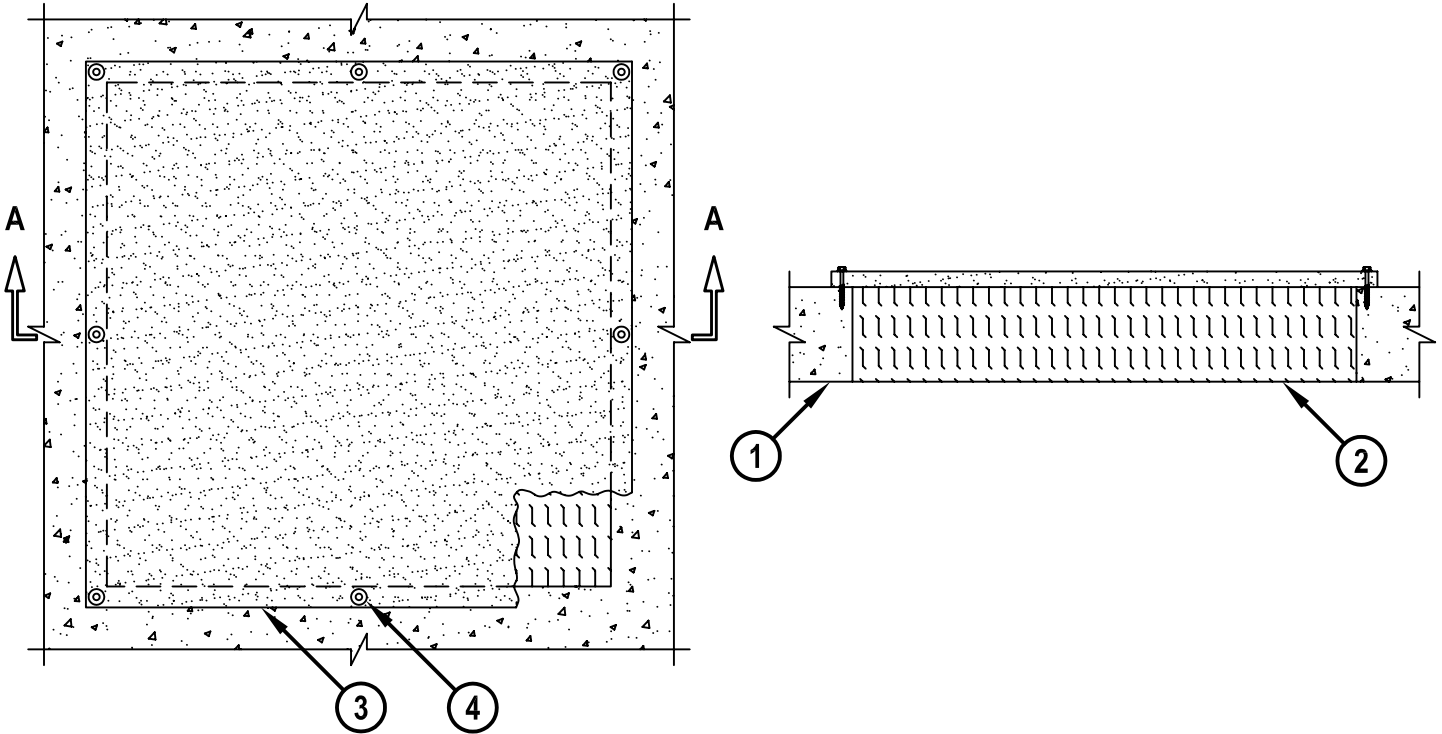
F-RATING = 2-HR.

T-RATING = 2-HR.

CAJ0105a.032204

TOP VIEW

SECTION A-A



1. CONCRETE FLOOR OR WALL ASSEMBLY (2-HR. FIRE-RATING) :
 - A. LIGHTWEIGHT OR NORMAL WEIGHT CONCRETE FLOOR OR WALL (MINIMUM 4-1/2" THICK).
 - B. ANY UL/cUL CLASSIFIED CONCRETE BLOCK WALL.
2. MINIMUM 4-1/2" THICK MINERAL WOOL (MINIMUM 4 PCF DENSITY) TIGHTLY PACKED AND FLUSH WITH TOP OF FLOOR OR BOTH SURFACES OF WALL.
3. HILTI CP 675T FIRESTOP BOARD CUT TO OVERLAP OPENING MINIMUM 1" ON ALL SIDES.
4. HILTI 2-1/4" LONG STEEL ANCHOR SCREWS WITH R-32 STEEL WASHERS AT EACH CORNER OF BOARD AND MAXIMUM 12" C/C.

NOTES : 1. MAXIMUM SIZE OF OPENING = 24" x 24".
 2. HILTI CP 675T FIRESTOP BOARD IS REQUIRED ON EACH SIDE OF A WALL ASSEMBLY.



HILTI, Inc.
 Tulsa, Oklahoma USA (918) 252-6000

Sheet	1 of 1
Scale	7/64" = 1"
Date	March 22, 2004

Drawing No.

CAJ
0105a