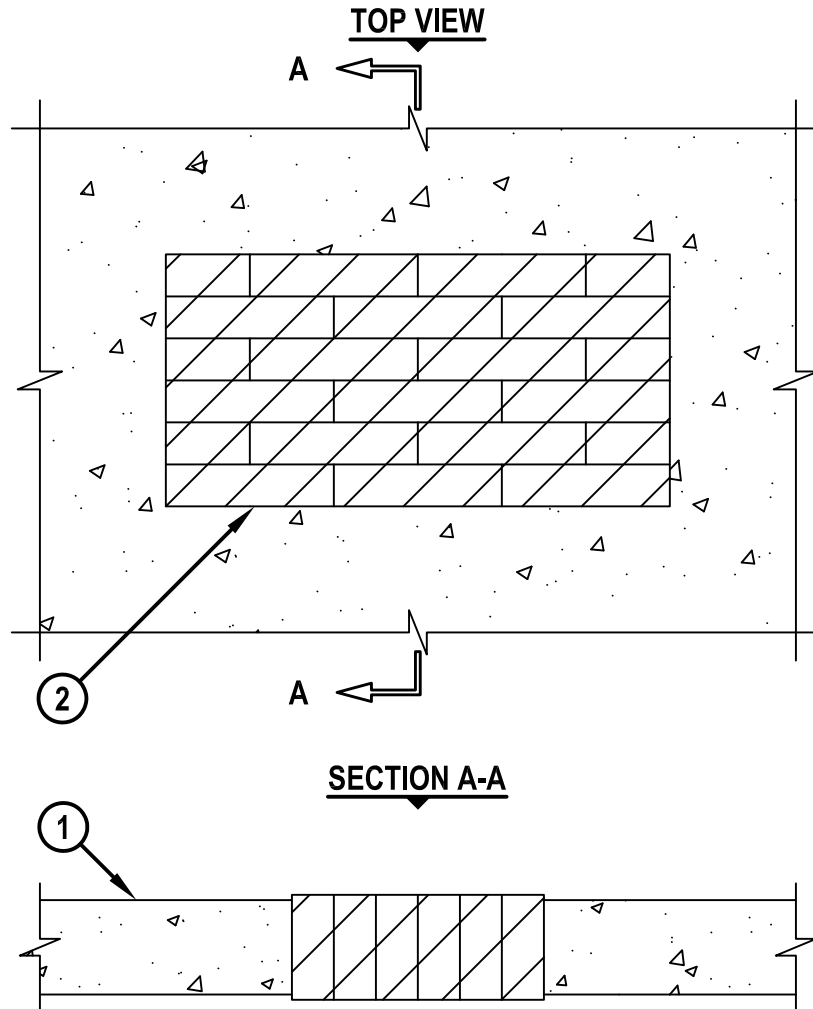


**BLANK OPENING THROUGH CONCRETE FLOOR/WALL OR BLOCK WALL ASSEMBLY**

F-RATING = 2-HR.  
T-RATING = 1-3/4-HR.

CAJ0138b.122914



1. CONCRETE FLOOR OR WALL ASSEMBLY (2-HR. FIRE-RATING) :
  - A. LIGHTWEIGHT OR NORMAL WEIGHT CONCRETE FLOOR OR WALL (MINIMUM 4-1/2" THICK).
  - B. ANY UL/cUL CLASSIFIED CONCRETE BLOCK WALL.
2. HILTI CFS-BL FIRESTOP BLOCK (2" THICK x 8" WIDE x 5" DEEP, REFERENCE : TOP VIEW) FIRMLY PACKED AND CENTERED WITHIN OPENING (SEE NOTE NO. 2 BELOW).

NOTES : 1. MAXIMUM AREA OF OPENING = 288 SQ. IN., WITH A MAXIMUM DIMENSION OF 24".  
 2. FOR BLOCK WALLS, FIRESTOP BLOCKS TO FILL ENTIRE THICKNESS OF WALL UNLESS WALL IS SOLID FILLED.  
 3. [OPTIONAL] APPLY HILTI FS-ONE MAX OR FS-ONE INTUMESCENT FIRESTOP SEALANT IN ANY VOID THAT MAY EXIST BETWEEN FIRESTOP BLOCKS.



HILTI, Inc.  
Tulsa, Oklahoma USA (800) 879-8000

Sheet	1 of 1
Scale	7/64" = 1"
Date	Dec. 29, 2014

Drawing No.  
**CAJ  
0138b**