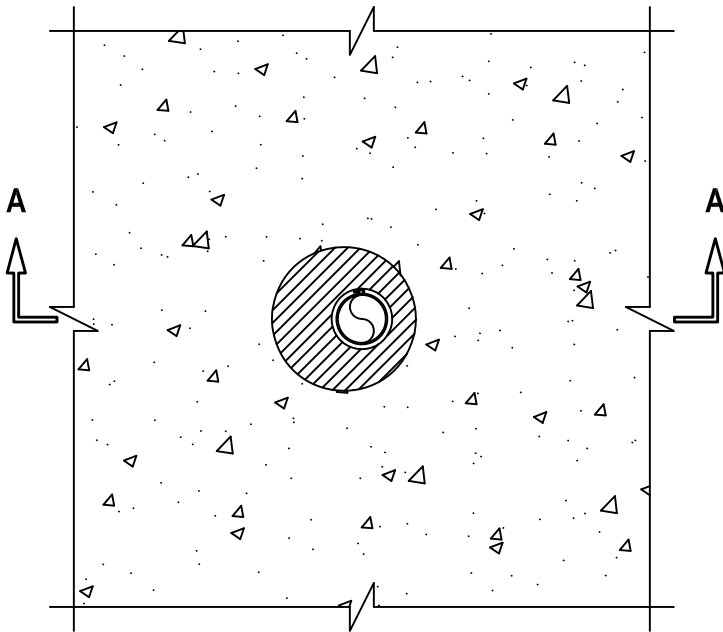


FLEXIBLE STEEL CONDUIT THROUGH CONCRETE FLOOR/WALL OR BLOCK WALL

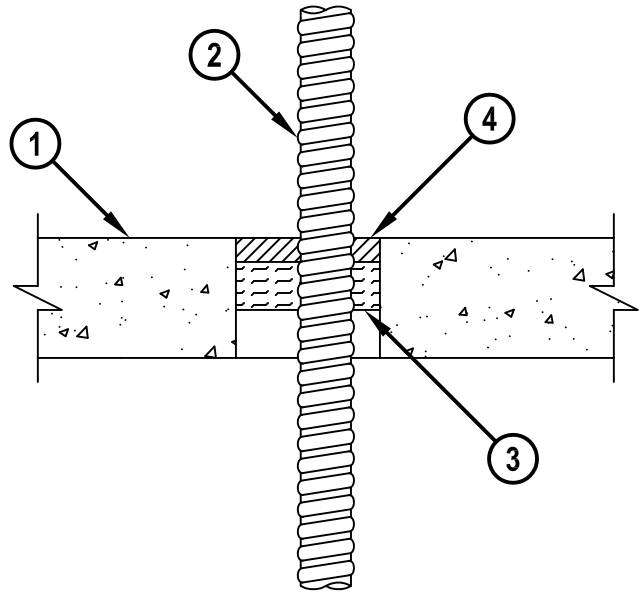
F-RATING = 2-HR.
T-RATING = 0-HR.

CAJ1346d.010515

TOP VIEW



SECTION A-A



1. CONCRETE FLOOR ASSEMBLY (2-HR. FIRE-RATING) :
 - A. LIGHTWEIGHT OR NORMAL WEIGHT CONCRETE FLOOR OR WALL (MINIMUM 2-1/2" THICK).
 - B. ANY UL/cUL CLASSIFIED CONCRETE BLOCK WALL.
2. PENETRATING ITEM TO BE ONE OF THE FOLLOWING :
 - A. MAXIMUM 1" NOMINAL DIAMETER FLEXIBLE STEEL CONDUIT.
 - B. MAXIMUM 1" NOMINAL DIAMETER FLEXIBLE STEEL GAS PIPING (WITH OR WITHOUT PLASTIC COVERING) MANUFACTURED BY OMEGA FLEX INC., TITFLEX CORP., OR WARD MFG. INC.
3. MINIMUM 1" THICKNESS MINERAL WOOL (MINIMUM 4 PCF DENSITY) TIGHTLY PACKED.
4. MINIMUM 1/2" DEPTH HILTI FS-ONE MAX OR FS-ONE INTUMESCENT FIRESTOP SEALANT.

NOTES : 1. MAXIMUM DIAMETER OF OPENING = 3".
2. ANNULAR SPACE = MINIMUM 1/2", MAXIMUM 1-1/4".



HILTI, Inc.
Tulsa, Oklahoma USA (800) 879-8000

Sheet	1 of 1
Scale	1/4" = 1"
Date	Jan. 05, 2015

Drawing No.
**CAJ
1346d**