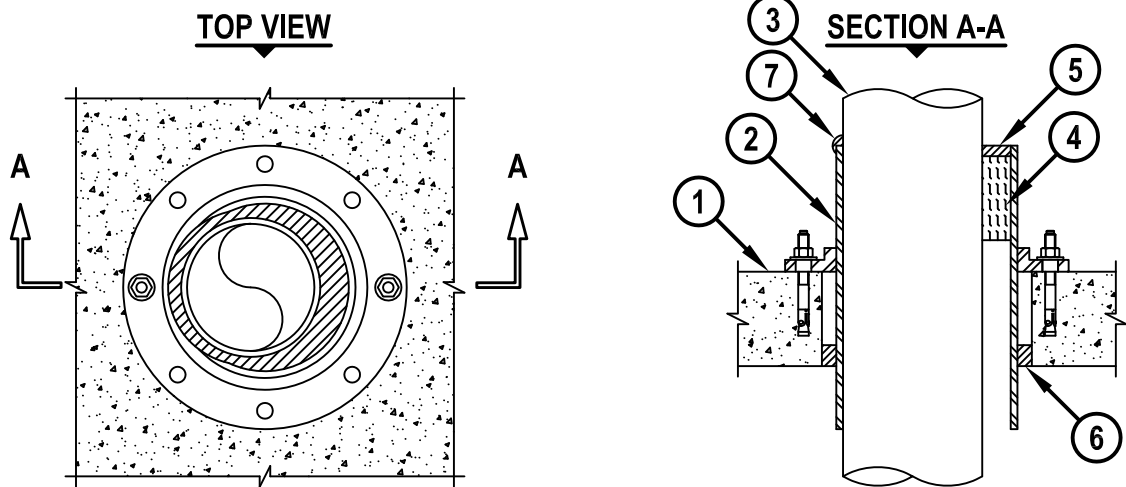


METAL PIPE THROUGH CONCRETE FLOOR/WALL OR BLOCK WALL

F-RATING = 3-HR.
T-RATING = 0-HR.

CAJ1454b.123014



1. CONCRETE FLOOR ASSEMBLY (3-HR. FIRE-RATING) :
 - A. LIGHTWEIGHT OR NORMAL WEIGHT CONCRETE FLOOR OR WALL (MINIMUM 4-1/2" THICK).
 - B. ANY UL/cUL CLASSIFIED CONCRETE BLOCK WALL.
2. MAXIMUM 8" NOMINAL DIAMETER STEEL PIPE SLEEVE (SCHEDULE 40 OR HEAVIER) WITH WELDED FLANGE (SIZED TO COMPLETELY COVER OPENING). STEEL SLEEVE BOLTED TO TOP SIDE OF FLOOR OR ONE SIDE OF WALL.
3. PENETRATING ITEM TO BE ONE OF THE FOLLOWING :
 - A. MAXIMUM 6" NOMINAL DIAMETER STEEL PIPE (SCHEDULE 10 OR HEAVIER).
 - B. MAXIMUM 6" NOMINAL DIAMETER COPPER PIPE.
 - C. MAXIMUM 6" NOMINAL DIAMETER CAST IRON PIPE.
 - D. MAXIMUM 6" NOMINAL DIAMETER STEEL CONDUIT.
 - E. MAXIMUM 4" NOMINAL DIAMETER EMT.
4. MINIMUM 4" THICKNESS MINERAL WOOL (MIN. 4 PCF DENSITY) TIGHTLY PACKED AND RECESSED FROM TOP END OF SLEEVE AS REQUIRED TO ACCOMMODATE FIRESTOP SEALANT THICKNESS.
5. MINIMUM 1/2" DEPTH HILTI FS-ONE MAX OR FS-ONE INTUMESCENT FIRESTOP SEALANT FLUSH WITH TOP END OF STEEL SLEEVE.
6. MINIMUM 1" DEPTH HILTI FS-ONE MAX OR FS-ONE INTUMESCENT FIRESTOP SEALANT FLUSH WITH BOTTOM OF FLOOR OR WITH ONE SIDE OF WALL.
7. MINIMUM 1/2" BEAD HILTI FS-ONE MAX OR FS-ONE INTUMESCENT FIRESTOP SEALANT APPLIED AT POINT OF CONTACT.

NOTES : 1. MAXIMUM DIAMETER OF OPENING = 10".
 2. ANNULAR SPACE BETWEEN SLEEVE AND PERIPHERY OF OPENING = MINIMUM 1/4", MAXIMUM 1-1/8".
 3. ANNULAR SPACE BETWEEN PIPE AND SLEEVE = MINIMUM 0", MAXIMUM 1-7/8".
 4. MINIMUM 1/2" DEPTH HILTI FS-ONE MAX OR FS-ONE INTUMESCENT FIRESTOP SEALANT IS REQUIRED, FLUSH WITH BOTH ENDS OF STEEL SLEEVE FOR A WALL ASSEMBLY.

| | | | |
|---------------------------------------------------------------------------------------------------------------------|---------------------------------------------------|--------------------------------------------------------|-------------------------------------|
|  Hilti Firestop Systems | HILTI, Inc. Tulsa, Oklahoma USA (800) 879-8000 | Sheet 1 of 1 Scale 7/64" = 1" Date Dec. 30, 2014 | Drawing No. CAJ 1454b |
| | Saving Lives through Innovation and Education | | |