

UL SYSTEM NO. C-AJ-2141

PLASTIC PIPE THROUGH CONCRETE FLOOR/WALL OR BLOCK WALL ASSEMBLY

F-RATING = 3-HR.

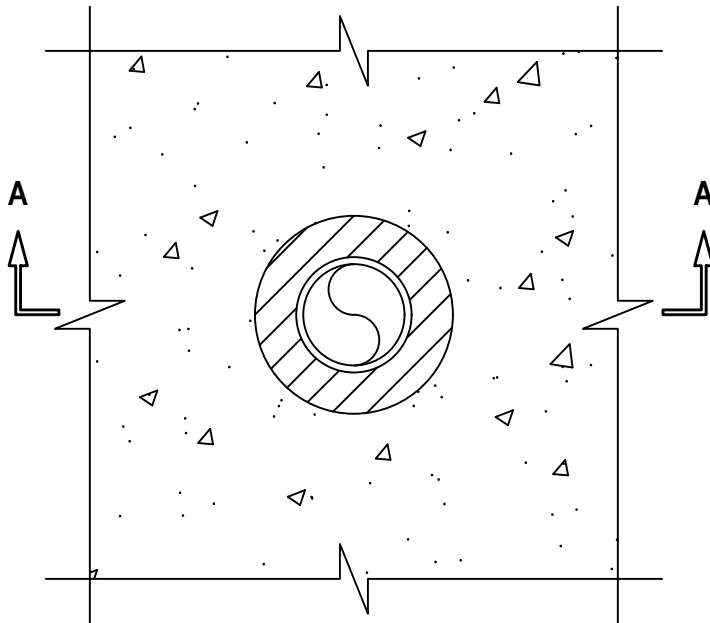
T-RATING = 2-HR.

L-RATING AT AMBIENT = LESS THAN 1 CFM / SQ FT

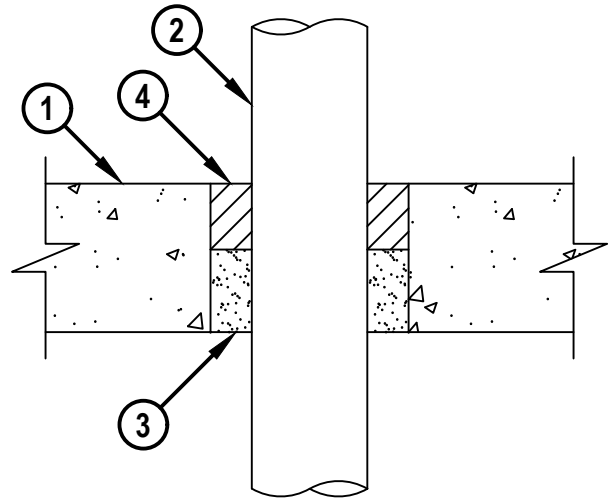
L-RATING AT 400°F = 4 CFM / SQ FT

CAJ2141h.082522

TOP VIEW



SECTION A-A



1. CONCRETE FLOOR OR WALL ASSEMBLY (3-HR. FIRE-RATING) :
 - A. LIGHTWEIGHT OR NORMAL WEIGHT CONCRETE FLOOR OR WALL (MINIMUM 4-1/2" THICK).
 - B. ANY UL CLASSIFIED CONCRETE BLOCK WALL.
2. PENETRATING ITEM TO BE ONE OF THE FOLLOWING :
 - A. MAXIMUM 3" NOMINAL DIAMETER PVC PLASTIC PIPE (SCHEDULE 40) (CLOSED PIPING SYSTEM ONLY).
3. MINIMUM 2-1/2" DEPTH HILTI CF-AS CJP OR CF 812 FILLER FOAM RECESSED 2" FROM FLOOR OR WALL SURFACE.
4. MINIMUM 2" DEPTH HILTI FS-ONE MAX INTUMESCENT FIRESTOP SEALANT.

NOTES : 1. MAXIMUM DIAMETER OF OPENING = 6".
2. ANNULAR SPACE = MINIMUM 1/2", MAXIMUM 2".
3. MINIMUM 2" DEPTH HILTI FS-ONE MAX INTUMESCENT FIRESTOP SEALANT IS REQUIRED ON BOTH SIDES OF A WALL.



HILTI, Inc.
Plano, Texas USA (800) 879-8000

Sheet	1 of 1
Scale	11/64" = 1"
Date	Aug. 25, 2022

Drawing No.
**CAJ
2141h**

Saving Lives through Innovation and Education