

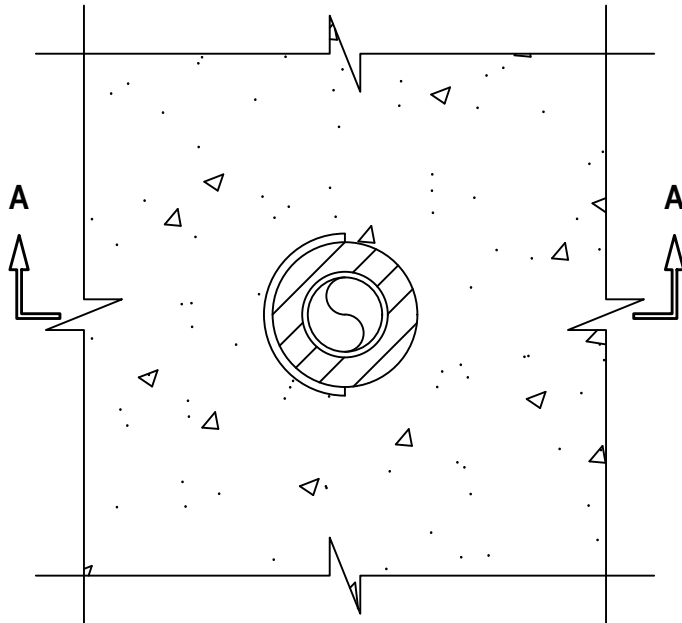
UL SYSTEM NO. C-AJ-2169

**PLASTIC PIPE THROUGH OPTIONAL STEEL PIPE SLEEVE IN CONCRETE
FLOOR/WALL OR BLOCK WALL ASSEMBLY**

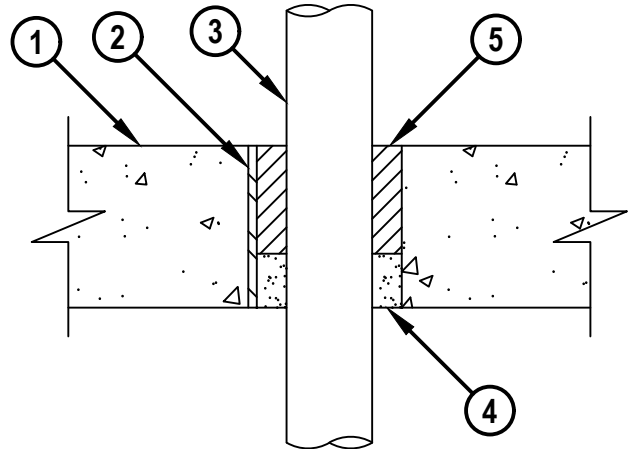
F-RATING = 2-HR.
T-RATING = 0-HR.

CAJ2169g.082522

TOP VIEW



SECTION A-A



1. CONCRETE FLOOR OR WALL ASSEMBLY (2-HR. FIRE-RATING) :
 - A. LIGHTWEIGHT OR NORMAL WEIGHT CONCRETE FLOOR OR WALL (MINIMUM 4-1/2" THICK).
 - B. ANY UL CLASSIFIED CONCRETE BLOCK WALL.
2. [OPTIONAL] MAXIMUM 4" NOMINAL DIAMETER STEEL PIPE SLEEVE (SCHEDULE 10 OR HEAVIER).
3. PENETRATING ITEM TO BE ONE OF THE FOLLOWING :
 - A. MAXIMUM 2" NOMINAL DIAMETER PVC PLASTIC PIPE (SCHEDULE 40) (SOLID CORE) (CLOSED OR VENTED PIPING SYSTEM).
 - B. MAXIMUM 2" NOMINAL DIAMETER RIGID NONMETALLIC CONDUIT (RNC).
4. MINIMUM 1-1/2" DEPTH HILTI CF-AS CJP OR CF 812 FILLER FOAM TO BE USED AS A BACKER FOR SEALANT.
5. MINIMUM 3" DEPTH HILTI FS-ONE MAX INTUMESCENT FIRESTOP SEALANT.

**NOTES : 1. MAXIMUM DIAMETER OF OPENING = 4".
2. ANNULAR SPACE = MINIMUM 1/2", MAXIMUM 1-3/8".
3. MINIMUM 3" DEPTH HILTI FS-ONE MAX INTUMESCENT FIRESTOP SEALANT
IS REQUIRED ON BOTH SIDES OF A WALL ASSEMBLY.**



HILTI, Inc.
Plano, Texas USA (800) 879-8000

Sheet	1 of 1
Scale	3/16" = 1"
Date	Aug. 25, 2022

Drawing No.
**CAJ
2169g**

Saving Lives through Innovation and Education