

UL SYSTEM NO. C-AJ-2243

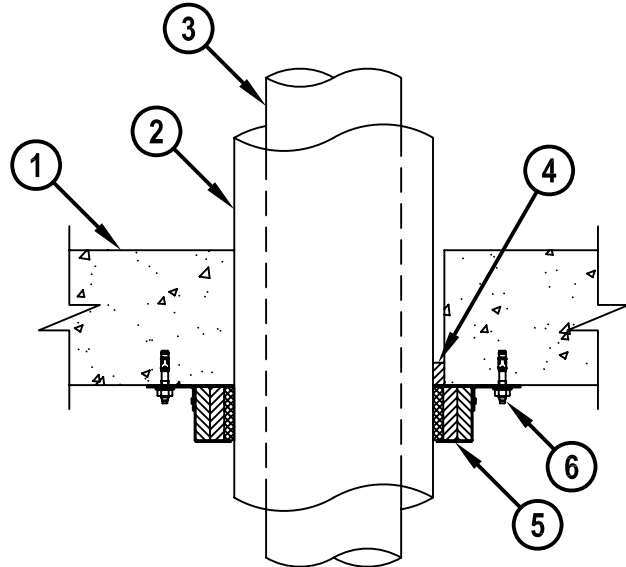
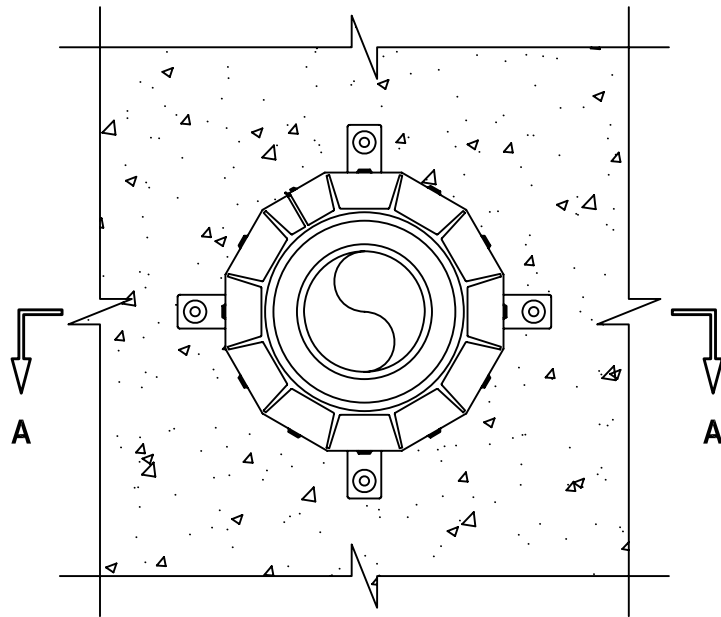
DOUBLE-CONTAINED PLASTIC PIPE THROUGH CONCRETE FLOOR/WALL OR BLOCK WALL ASSEMBLY

F-RATING = 3-HR.
T-RATING = 2-HR.

CAJ2243e.081506

BOTTOM VIEW

SECTION A-A



1. CONCRETE FLOOR OR WALL ASSEMBLY (3-HR. FIRE-RATING) :
 - A. LIGHTWEIGHT OR NORMAL WEIGHT CONCRETE FLOOR OR WALL (MINIMUM 4-1/2" THICK).
 - B. ANY UL CLASSIFIED CONCRETE BLOCK WALL.
2. NOMINAL 6" DIAMETER (SCHEDULE 40) (SOLID CORE) PVC PLASTIC PIPE.
3. MAXIMUM 4" NOMINAL DIAMETER PVDF PLASTIC PIPE TO BE INSTALLED CONCENTRICALLY WITHIN THE PVC PLASTIC PIPE.
4. MINIMUM 3/4" DEPTH HILTI CF 128-DW INSULATING FOAM FLUSH WITH BOTTOM SURFACE OF FLOOR.
5. HILTI CP 643 160/6" N FIRESTOP COLLAR WITH FASTENING HOOKS.
6. EACH FASTENING HOOK SECURED TO BOTTOM OF FLOOR WITH 1/4" x 1-1/4" LONG STEEL EXPANSION BOLTS, MIN. 0.145" x 1-1/4" POWDER ACTUATED FASTENERS WITH 1-7/16" DIAMETER STEEL WASHER, 1/4" x 1-1/4" HILTI KWIK-CON II+ CONCRETE SCREW ANCHOR, 1/4" x 1-3/4" HILTI KWIK-BOLT 3 STEEL EXPANSION ANCHOR, OR HILTI X-DNI 27 P8 S15 POWDER ACTUATED FASTENER WITH INTEGRATED WASHER.

NOTES : 1. MAXIMUM DIAMETER OF OPENING = 7".
2. ANNULAR SPACE = MINIMUM 0", MAXIMUM 1/2".
3. CLOSED OR VENTED PIPING SYSTEM.
4. HILTI CP 643N FIRESTOP COLLAR AND CF 128-DW INSULATING FOAM ARE REQUIRED ON BOTH SIDES OF A WALL ASSEMBLY.



HILTI, Inc.
Tulsa, Oklahoma USA (800) 879-8000

Sheet	1 of 1
Scale	5/32" = 1"
Date	Aug. 15, 2006

Drawing No.

**CAJ
2243e**

Saving Lives through Innovation and Education