

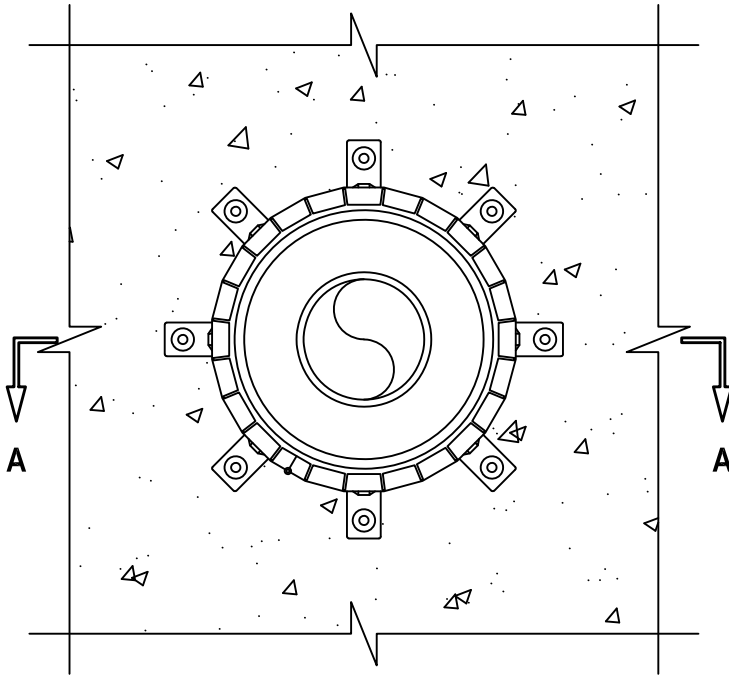
UL SYSTEM NO. C-AJ-2285

**DOUBLE CONTAINED PLASTIC PIPES THROUGH CONCRETE FLOOR/WALL
OR BLOCK WALL ASSEMBLY**

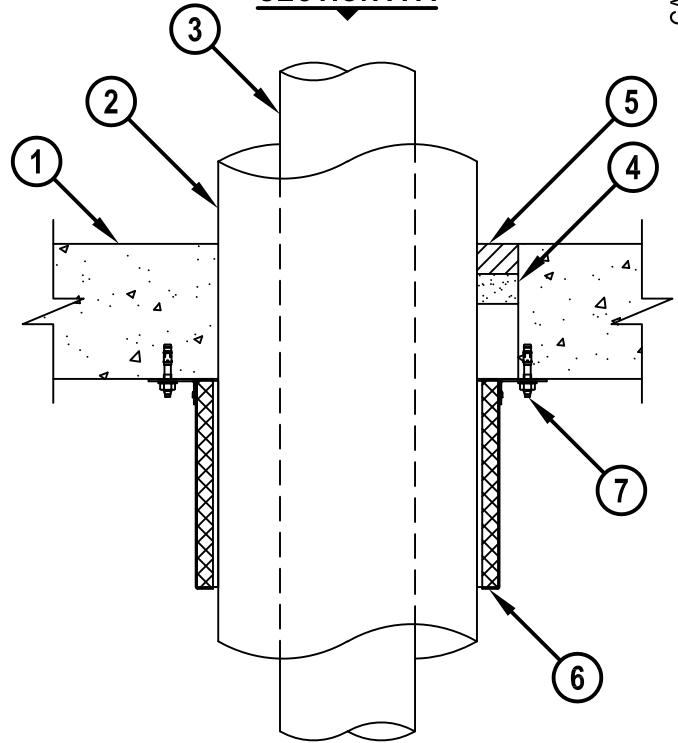
F-RATING = 2-HR.
T-RATING = 2-HR.

CAJ2285g.091718

BOTTOM VIEW



SECTION A-A



1. CONCRETE FLOOR ASSEMBLY (2-HR. FIRE-RATING) :
 - A. LIGHTWEIGHT OR NORMAL WEIGHT CONCRETE FLOOR OR WALL (MINIMUM 4-1/2" THICK).
 - B. ANY UL CLASSIFIED CONCRETE BLOCK WALL.
2. NOMINAL 8" DIAMETER PP PLASTIC PIPE (CLOSED PIPING SYSTEM).
3. NOMINAL 4" DIAMETER PP PLASTIC PIPE INSTALLED CONCENTRICALLY WITHIN THE NOMINAL 8" DIAMETER PP PLASTIC PIPE (CLOSED PIPING SYSTEM).
4. MINIMUM 1" DEPTH HILTI CF-AS CJP OR CF 812 FILLER FOAM.
5. MINIMUM 1" DEPTH HILTI FS-ONE MAX INTUMESCENT FIRESTOP SEALANT.
6. HILTI CP 644 200/8" FIRESTOP COLLAR WITH FASTENING HOOKS.
7. EACH FASTENING HOOK SECURED TO BOTTOM OF FLOOR WITH 1/4" x 1-3/4" LONG STEEL EXPANSION BOLTS IN CONJUNCTION WITH 3/4" DIAMETER STEEL WASHERS (EX. HILTI KWIK-BOLT 3).

NOTES : 1. MAXIMUM DIAMETER OF OPENING = 10".
2. ANNULAR SPACE = MINIMUM 0", MAXIMUM 1-3/8".
3. HILTI CF-AS CJP OR CF 812 FILLER FOAM, FS-ONE MAX INTUMESCENT FIRESTOP SEALANT AND CP 644 FIRESTOP COLLARS ARE REQUIRED ON BOTH SIDES OF A WALL ASSEMBLY.



HILTI, Inc.
Plano, Texas USA (800) 879-8000

Sheet	1 of 1
Scale	5/32" = 1"
Date	Sep. 15, 2018

Drawing No.
**CAJ
2285g**

Saving Lives through Innovation and Education