

UL SYSTEM NO. C-AJ-2372

**PLASTIC PIPE THROUGH CONCRETE FLOOR/WALL OR BLOCK WALL ASSEMBLY**

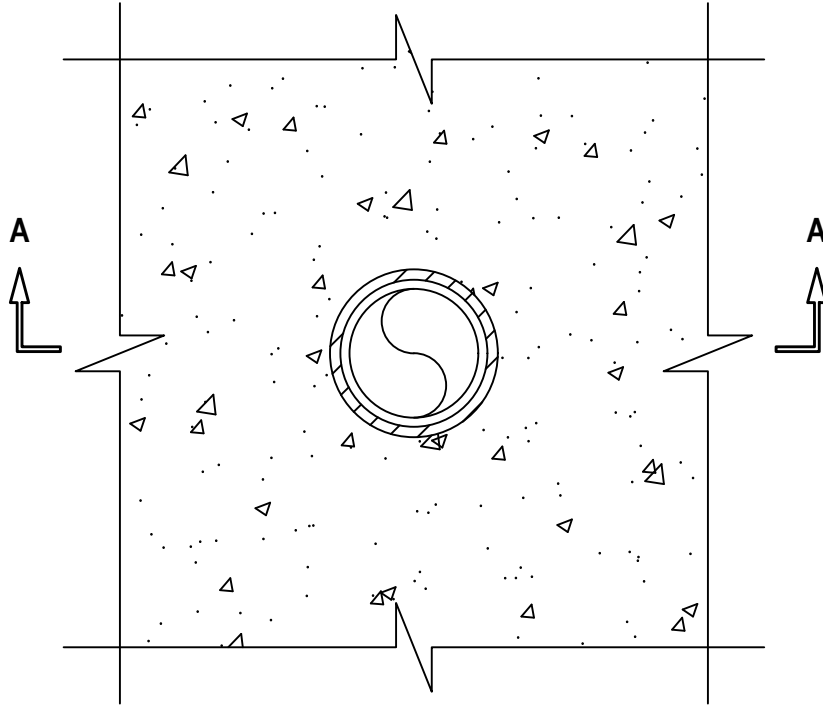
F-RATING = 3-HR.

T-RATING = 1/4-HR.

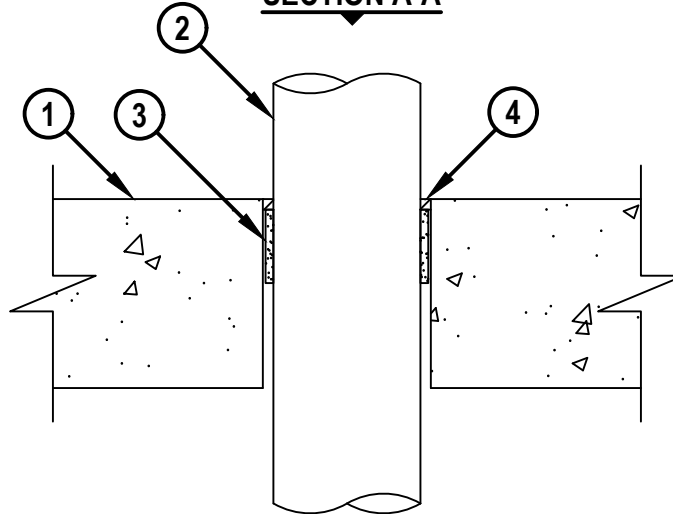
W-RATING = CLASS I (SEE NOTE NO. 6 BELOW)

CAJ2372j.081722

**TOP VIEW**



**SECTION A-A**



HILTI, Inc.  
Plano, Texas USA (800) 879-8000

Sheet	1 of 2
Scale	7/32" = 1"
Date	Aug. 17, 2022

Drawing No.

**CAJ  
2372j**

*Saving Lives through Innovation and Education*

**PLASTIC PIPE THROUGH CONCRETE FLOOR/WALL OR BLOCK WALL ASSEMBLY**

F-RATING = 3-HR.

T-RATING = 1/4-HR.

W-RATING = CLASS I (SEE NOTE NO. 6 BELOW)

CAJ2372j.081722

1. CONCRETE FLOOR OR WALL ASSEMBLY (3-HR. FIRE-RATING) :
  - A. LIGHTWEIGHT OR NORMAL WEIGHT CONCRETE FLOOR OR WALL (MINIMUM 4-1/2" THICK).
  - B. ANY UL CLASSIFIED CONCRETE BLOCK WALL.
2. PENETRATING ITEM TO BE ONE OF THE FOLLOWING :
  - A. MAXIMUM 3" NOMINAL DIAMETER PVC PLASTIC PIPE (CELLULAR OR SOLID CORE).
  - B. MAXIMUM 3" NOMINAL DIAMETER CPVC PLASTIC PIPE (CLOSED PIPING SYSTEM ONLY).
3. HILTI CP 648E WRAP STRIP (SIZE SHOWN IN TABLE BELOW) CONTINUOUSLY WRAPPED AROUND THE OUTER CIRCUMFERENCE OF THE PIPE, COVERING ONE TIME, WITH ENDS BUTTED AND HELD IN PLACE WITH TAPE. WRAP STRIP RECESSED FROM TOP SURFACE OF FLOOR TO ACCOMMODATE FIRESTOP SEALANT.
4. MINIMUM 1/4" DEPTH HILTI FS-ONE MAX INTUMESCENT FIRESTOP SEALANT, HILTI CP 601S ELASTOMERIC FIRESTOP SEALANT, HILTI CP 604 SELF LEVELING FIRESTOP SEALANT, HILTI CFS-S SIL GG FIRESTOP SILICONE SEALANT, OR HILTI CFS-S SIL SL FIRESTOP SILICONE SEALANT INSTALLED FLUSH WITH TOP SURFACE OF FLOOR.

MAXIMUM PIPE SIZE	FIRESTOP PRODUCT
1-1/2"	CP 648E W25/1" OR CP 648E W45/1-3/4"
2"	CP 648E W25/1" OR CP 648E W45/1-3/4"
3"	CP 648E W45/1-3/4"

- NOTES :**
1. MAXIMUM DIAMETER OF OPENING = 4".
  2. ANNULAR SPACE = MINIMUM 3/16", MAXIMUM 5/16".
  3. CLOSED OR VENTED PIPING SYSTEMS (PVC = SCHEDULE 40; CPVC = SDR 13.5).
  4. HILTI CP 648E WRAP STRIP AND HILTI FS-ONE MAX INTUMESCENT FIRESTOP SEALANT, HILTI CP 601S ELASTOMERIC FIRESTOP SEALANT, OR HILTI CFS-S SIL GG FIRESTOP SILICONE SEALANT ARE REQUIRED ON BOTH SIDES OF A WALL ASSEMBLY.
  5. AS AN ALTERNATE TO HILTI CP 648E WRAP STRIP, HILTI CP 648S/1.5", CP 648S/2" OR CP 648S/3" WRAP STRIP MAY BE USED ON 1-1/2", 2" AND 3" PIPES, RESPECTIVELY. WRAP HILTI CP 648S WRAP STRIP AROUND THE OUTER CIRCUMFERENCE OF THE PIPE AND HOLD IN PLACE WITH INTEGRATED TAPE. WRAP STRIP TO BE SLID INTO ANNULAR SPACE AND RECESSED TO ACCOMMODATE FIRESTOP SEALANT.
  6. W-RATING APPLIES ONLY WHEN HILTI CP 601S ELASTOMERIC FIRESTOP SEALANT, HILTI CP 604 SELF-LEVELING FIRESTOP SEALANT, HILTI CFS-S SIL GG FIRESTOP SILICONE SEALANT, OR HILTI CFS-S SIL SL FIRESTOP SILICONE SEALANT IS USED.



HILTI, Inc.  
Plano, Texas USA (800) 879-8000

Sheet	2 of 2
Scale	-
Date	Aug. 17, 2022

Drawing No.

**CAJ  
2372j**