

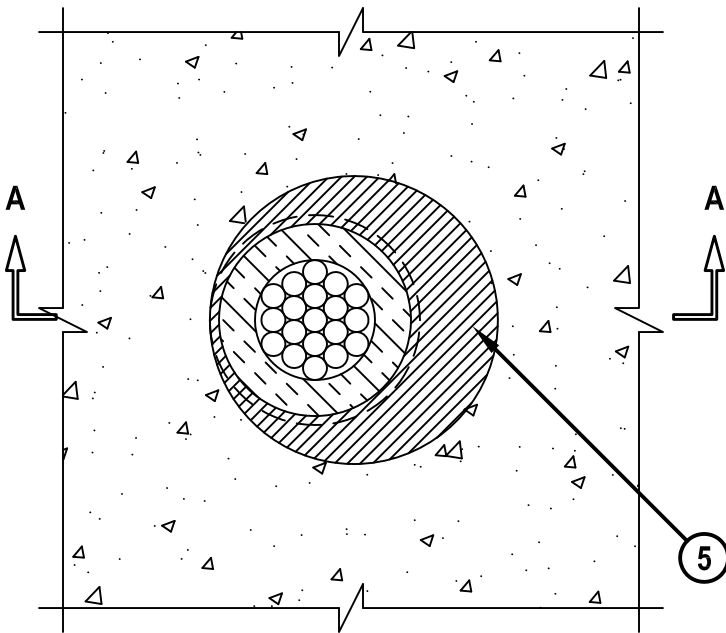
UL SYSTEM NO. C-AJ-2468

**BEVERAGE LINES THROUGH CONCRETE FLOOR/WALL OR BLOCK WALL**

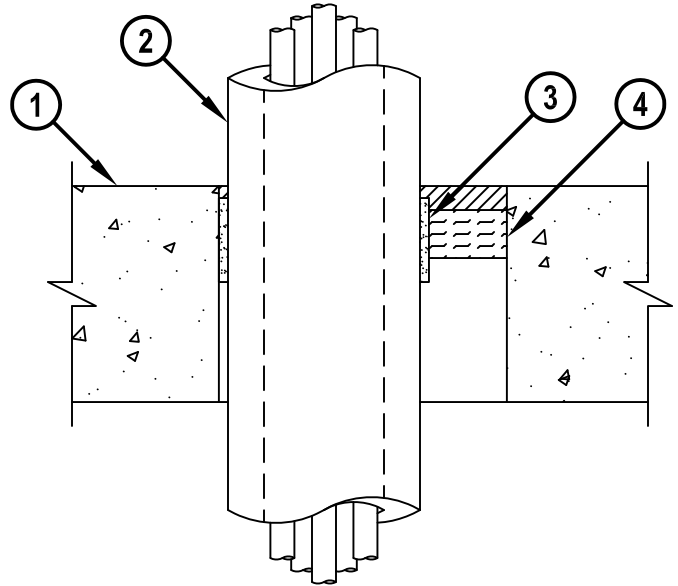
F-RATING = 2-HR.  
T-RATING = 1-1/2-HR.

CAJ2468b.010515

**TOP VIEW**



**SECTION A-A**



1. CONCRETE FLOOR OR WALL ASSEMBLY (2-HR. FIRE-RATING) :
  - A. LIGHTWEIGHT OR NORMAL WEIGHT CONCRETE FLOOR OR WALL (MINIMUM 4-1/2" THICK).
  - B. ANY UL CLASSIFIED CONCRETE BLOCK WALL.
2. NOMINAL 4" DIAMETER INSULATED BEVERAGE LINE CONSISTING OF THE FOLLOWING :
  - A. NOMINAL 1/2" DIAMETER POLYETHYLENE (PE) TUBING OR CROSS-LINKED POLYETHYLENE TUBING, TIGHTLY BUNDLED.
  - B. MAXIMUM 3/4" THICK AB/PVC FLEXIBLE FOAM INSULATION.
3. HILTI CP 648E FIRESTOP WRAP STRIP (NOMINAL 3/16" THICK x 1-3/4" WIDE) CONTINUOUSLY WRAPPED AROUND THE OUTER CIRCUMFERENCE OF THE INSULATION, COVERING ONCE, WITH ENDS BUTTED AND HELD IN PLACE WITH ALUMINUM OR MASKING TAPE. WRAP STRIP RECESSED 1/4" FROM TOP SURFACE OF FLOOR.
4. MINIMUM 1" THICKNESS MINERAL WOOL (MIN. 4 PCF DENSITY) TIGHTLY PACKED AND RECESSED TO ACCOMMODATE FIRESTOP SEALANT.
5. MINIMUM 1/2" DEPTH HILTI FS-ONE MAX OR FS-ONE INTUMESCENT FIRESTOP SEALANT.

**NOTES :** 1. MAXIMUM DIAMETER OF OPENING = 6".  
2. ANNULAR SPACE = MINIMUM 3/16", MAXIMUM 1-13/16".  
3. HILTI CP 648E FIRESTOP WRAP STRIP AND HILTI FS-ONE MAX OR FS-ONE INTUMESCENT FIRESTOP SEALANT ARE REQUIRED ON EACH SIDE OF A WALL ASSEMBLY.



HILTI, Inc.  
Tulsa, Oklahoma USA (800) 879-8000

Sheet	1 of 1
Scale	1/4" = 1"
Date	Jan. 05, 2015

Drawing No.

**CAJ  
2468b**

*Saving Lives through Innovation and Education*