

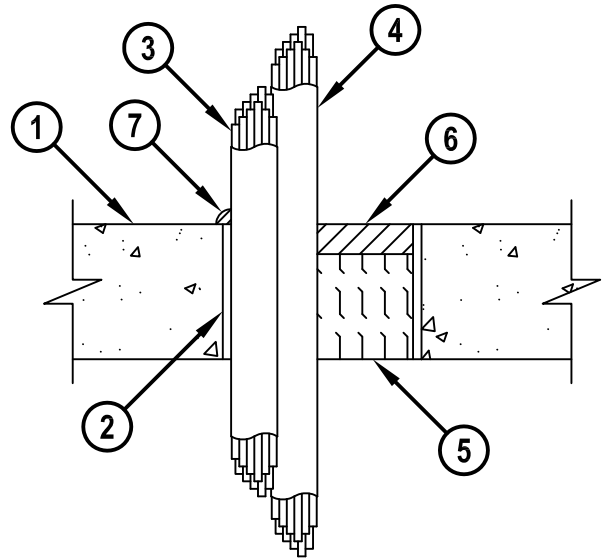
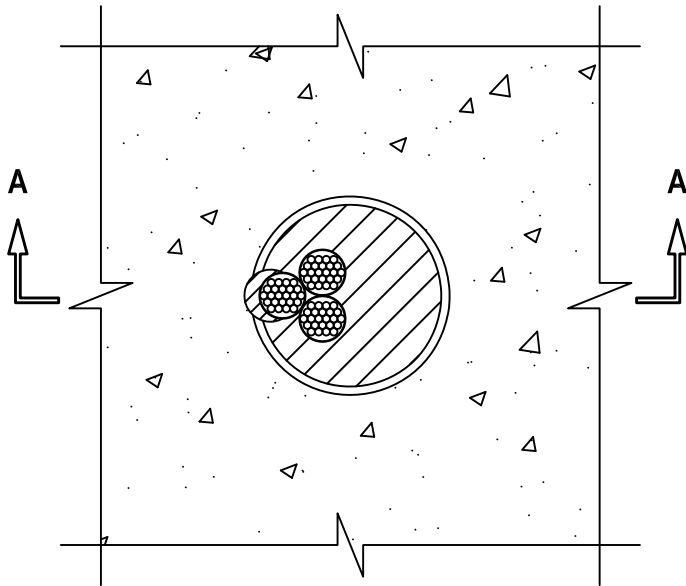
**CABLE BUNDLE WITHIN NYLON RACEWAY THROUGH
CONCRETE FLOOR/WALL OR BLOCK WALL ASSEMBLY**

F-RATING = 3-HR.
T-RATING = 0-HR.

CAJ2659a.051712

TOP VIEW

SECTION A-A



1. CONCRETE FLOOR OR WALL ASSEMBLY (3-HR. FIRE-RATING) :
 - A. LIGHTWEIGHT OR NORMAL WEIGHT CONCRETE FLOOR OR WALL (MINIMUM 4-1/2" THICK).
 - B. ANY UL/cUL CLASSIFIED CONCRETE BLOCK WALL.
2. [OPTIONAL] MAXIMUM 6" NOMINAL DIAMETER PVC PLASTIC PIPE SLEEVE (SCH 40).
3. MAXIMUM 3" DIAMETER FLEXIBLE NYLON OPTICAL FIBER/COMMUNICATIONS CABLE ROUTING ASSEMBLY (UL LISTED FOR PLENUM INSTALLATION) WITH A MAXIMUM OF THREE 1-1/2" DIAMETER CELLS.
4. CABLE BUNDLE TO BE A COMBINATION OF ANY OF THE FOLLOWING :
 - A. MAXIMUM 100 PAIR NO. 24 AWG TELEPHONE CABLE WITH PVC JACKET.
 - B. MAXIMUM 24 FIBER OPTIC CABLE WITH PVC JACKET.
5. MINIMUM 3-1/2" THICKNESS MINERAL WOOL (MIN. 4 PCF DENSITY) TIGHTLY PACKED.
6. MINIMUM 1" DEPTH HILTI CP 618 FIRESTOP PUTTY STICK.
7. MINIMUM 1/2" BEAD HILTI CP 618 FIRESTOP PUTTY STICK APPLIED AT POINT OF CONTACT.

NOTES : 1. MAXIMUM DIAMETER OF OPENING = 6".
 2. ANNULAR SPACE = MINIMUM 0", MAXIMUM 3".
 3. CABLES TO FILL MAXIMUM 80% EACH CELL OF FLEXIBLE NYLON CABLE ROUTING ASSEMBLY.
 4. CABLES TO FILL MAXIMUM 60% CROSS-SECTIONAL AREA OF SLEEVE.



HILTI, Inc.
Tulsa, Oklahoma USA (800) 879-8000

Sheet	1 of 1
Scale	5/32" = 1"
Date	May 17, 2012

Drawing No.
**CAJ
2659a**