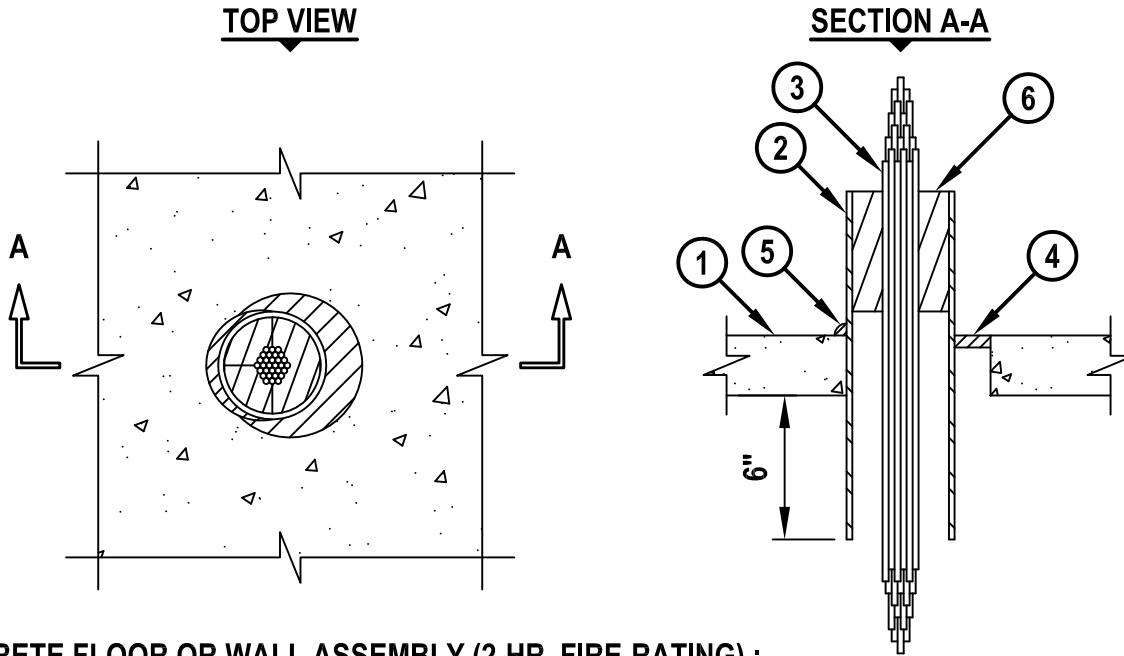


CABLE BUNDLE THROUGH SLEEVE IN CONCRETE FLOOR/WALL OR BLOCK WALL

F-RATING = 2-HR.
T-RATING = 1/2-HR.

CAJ3152c.010515



1. CONCRETE FLOOR OR WALL ASSEMBLY (2-HR. FIRE-RATING) :
 - A. LIGHTWEIGHT OR NORMAL WEIGHT CONCRETE FLOOR OR WALL (MINIMUM 2-1/2" THICK).
 - B. ANY UL/cUL CLASSIFIED CONCRETE BLOCK WALL.
2. MAXIMUM 4" NOMINAL DIAMETER STEEL PIPE SLEEVE (SCHEDULE 40 OR HEAVIER) PROJECTING 6" BEYOND EACH SURFACE OF FLOOR OR WALL. SLEEVE TO BE RIGIDLY SUPPORTED.
3. CABLE BUNDLE TO BE A COMBINATION OF ANY OF THE FOLLOWING :
 - A. MAXIMUM 100 PAIR NO. 24 AWG TELEPHONE CABLE WITH PVC JACKET.
 - B. MAXIMUM 1/4" DIAMETER FIBER-OPTIC CABLE WITH PVC JACKET.
4. MINIMUM 1/2" DEPTH HILTI FS-ONE MAX OR FS-ONE INTUMESCENT FIRESTOP SEALANT.
5. MINIMUM 1/2" BEAD HILTI FS-ONE MAX OR FS-ONE INTUMESCENT FIRESTOP SEALANT APPLIED AT POINT OF CONTACT.
6. HILTI CFS-BL FIRESTOP BLOCKS OR HILTI FS 657 FIRE BLOCKS (2" THICK x 8" WIDE x 5" DEEP, REFERENCE : TOP VIEW) TO BE FLUSH WITH TOP OF STEEL PIPE SLEEVE.

- NOTES :**
1. MAXIMUM DIAMETER OF OPENING = 6".
 2. ANNULAR SPACE BETWEEN SLEEVE AND PERIPHERY OF OPENING = MIN. 0", MAX. 1-1/2".
 3. ANNULAR SPACE BETWEEN CABLE BUNDLE AND PERIPHERY OF SLEEVE = 1".
 4. CABLES TO FILL MAXIMUM 25% OF CROSS-SECTIONAL AREA OF OPENING.
 5. APPLY HILTI FS-ONE MAX OR FS-ONE INTUMESCENT FIRESTOP SEALANT OR HILTI CP 618 FIRESTOP PUTTY STICK INTO INTERSTICES OF CABLE BUNDLE, AND VOIDS WITHIN FIRESTOP BLOCKS/FIRE BLOCKS, TO MAXIMUM EXTENT POSSIBLE.
 6. HILTI CFS-BL FIRESTOP BLOCKS OR HILTI FS 657 FIRE BLOCKS, FS-ONE MAX OR FS-ONE INTUMESCENT FIRESTOP SEALANT, AND CP 618 FIRESTOP PUTTY STICK ARE REQUIRED ON BOTH SIDES OF A WALL ASSEMBLY.



HILTI, Inc.
Tulsa, Oklahoma USA (800) 879-8000

Sheet	1 of 1
Scale	1/8" = 1"
Date	Jan. 05, 2015

Drawing No.

**CAJ
3152c**