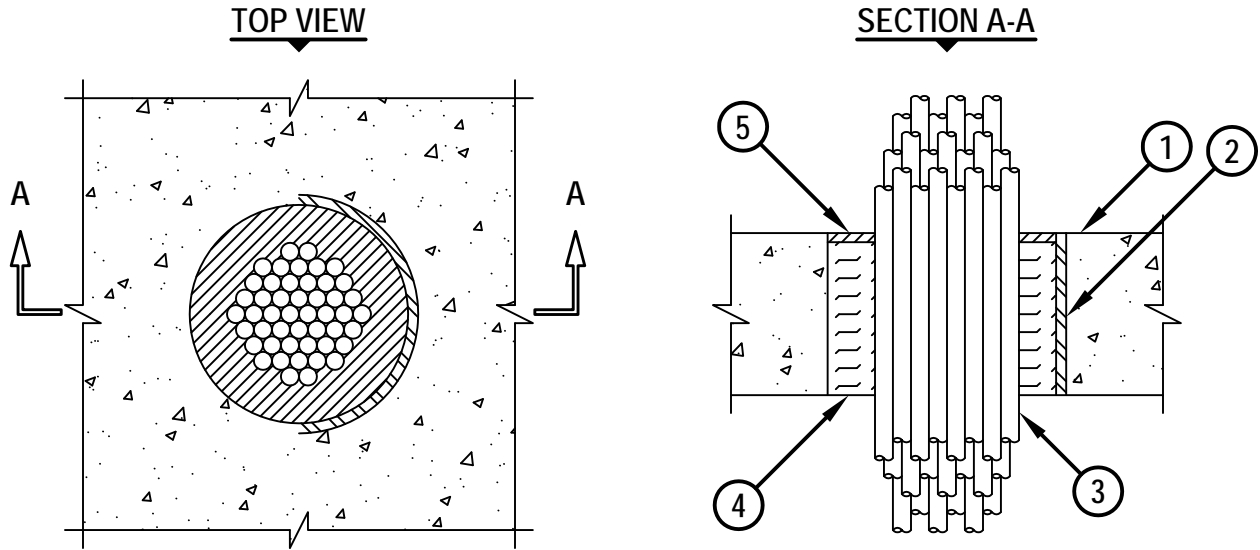


**CABLE BUNDLE THROUGH CONCRETE FLOOR/WALL OR BLOCK WALL**

F-RATING = 3-HR.

T-RATING = 0-HR.

CAJ3193e.122013



1. LIGHTWEIGHT OR NORMAL WEIGHT CONCRETE FLOOR (MINIMUM 4-1/2" THICK (3-HR. FIRE-RATING).
2. [OPTIONAL] MAXIMUM 6" NOMINAL DIAMETER STEEL PIPE SLEEVE (SCHEDULE 40 OR HEAVIER).
3. CABLE BUNDLE TO CONSIST OF ANY OF THE FOLLOWING :
  - A. MAXIMUM 500 KCMIL POWER CABLE WITH PVC JACKET.
  - B. MAXIMUM 300 PAIR NO. 24 AWG TELEPHONE CABLE WITH PVC JACKET.
  - C. MAXIMUM 7/C NO. 12 AWG POWER CABLE WITH PVC JACKET.
  - D. MAXIMUM 1/2" DIAMETER FIBER-OPTIC CABLE WITH PVC JACKET.
  - E. MAXIMUM 3/C (+GROUND) NO. 12 AWG STEEL METAL-CLAD CABLE WITH PVC JACKET.
  - F. MAXIMUM 1" DIAMETER METAL-CLAD TEK CABLE WITH PVC JACKET.
  - G. MAXIMUM 3/C (+GROUND) 2/0 AWG COPPER SER CABLE WITH PVC JACKET.
  - H. TYPE RG/U COAXIAL CABLE.
4. MINIMUM 4" THICKNESS MINERAL WOOL (MIN. 4 PCF DENSITY) TIGHTLY PACKED.
5. MINIMUM 1/4" DEPTH HILTI CP 604 SELF-LEVELING FIRESTOP SEALANT, HILTI CFS-S SIL GG FIRESTOP SILICONE SEALANT, OR HILTI CFS-S SIL SL FIRESTOP SILICONE SEALANT.

NOTES : 1. MAXIMUM DIAMETER OF OPENING = 6".  
 2. ANNULAR SPACE = NOMINAL 1".  
 3. CABLES TO FILL MAXIMUM 45% OF CROSS-SECTIONAL AREA OF OPENING.



HILTI, Inc.  
 Tulsa, Oklahoma USA (800) 879-8000

Sheet	1 of 1
Scale	3/16" = 1"
Date	Dec. 20, 2013

Drawing No.  
**CAJ**  
**3193e**