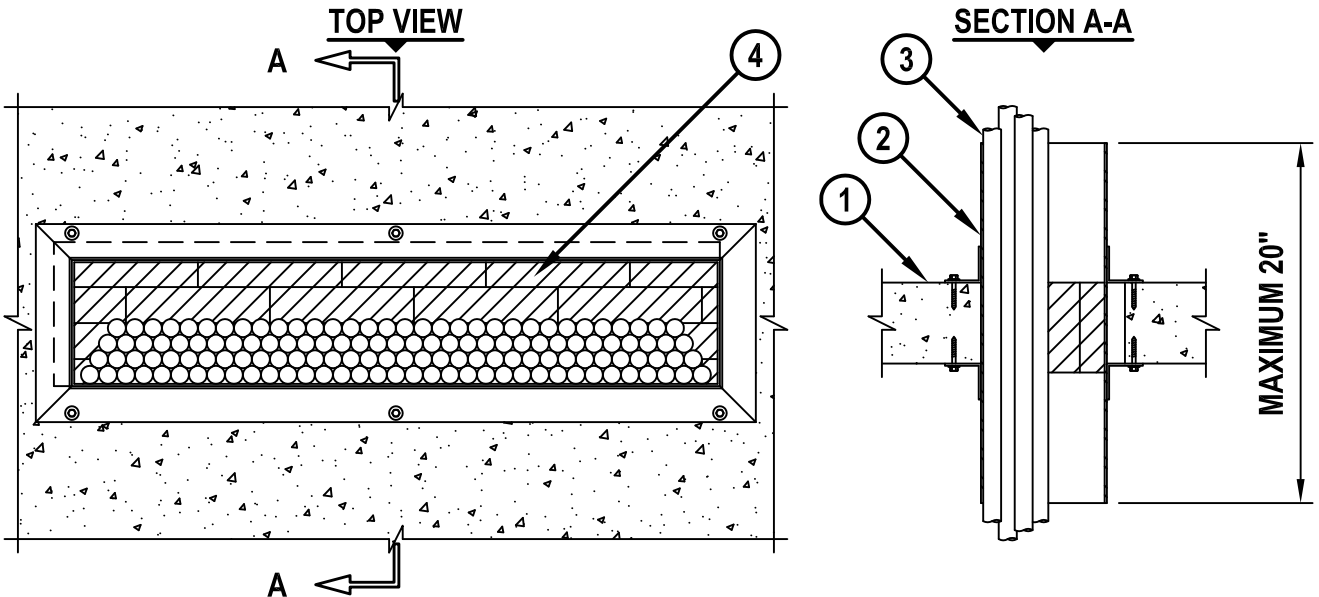


**CABLES THROUGH CABLOFIL, INC. STEEL SLEEVE IN CONCRETE FLOOR/WALL OR BLOCK WALL ASSEMBLY**

F-RATING = 2-HR.  
T-RATING = 0-HR.



CAJ3232c.010615

1. CONCRETE FLOOR OR WALL ASSEMBLY (2-HR. FIRE-RATING) :
  - A. LIGHTWEIGHT OR NORMAL WEIGHT CONCRETE FLOOR OR WALL (MINIMUM 4-1/2" THICK).
  - B. ANY UL/cUL CLASSIFIED CONCRETE BLOCK WALL.
2. MAXIMUM 36" x 7", TYPE P-W STEEL SLEEVE (MINIMUM 14 GA.) MANUFACTURED BY CABLOFIL, INC., AND FASTENED TO BOTH SIDES OF FLOOR OR WALL WITH STEEL CONCRETE SCREWS AT EACH CORNER AND SPACED A MAXIMUM 18" C/C.
3. CABLES TO CONSIST OF A COMBINATION OF ANY OF THE FOLLOWING :
  - A. MAXIMUM 300 PAIR NO. 24 AWG TELEPHONE CABLE WITH PVC JACKET.
  - B. MAXIMUM 500 KCMIL SINGLE CONDUCTOR POWER CABLE WITH PVC JACKET.
  - C. MAXIMUM 1/2" DIAMETER FIBER-OPTIC CABLE (MAXIMUM 24 FIBER) WITH PVC JACKET.
  - D. MAXIMUM 3/C NO. 12 AWG STEEL-CLAD CABLE.
  - E. MAXIMUM 7/C NO. 12 AWG POWER CABLE WITH PVC JACKET.
4. HILTI CFS-BL FIRESTOP BLOCK OR HILTI FS 657 FIRE BLOCK (2" THICK x 8" WIDE x 5" DEEP, REFERENCE : TOP VIEW) FIRMLY PACKED AND INSTALLED FLUSH WITH THE TOP SURFACE OF CONCRETE FLOOR OR EITHER SURFACE OF WALL. EITHER ONE OR A COMBINATION OF THE BLOCK TYPES MAY BE USED.

**NOTES :** 1. MAXIMUM SIZE OF OPENING = 37" x 8".  
 2. ANNULAR SPACE BETWEEN STEEL SLEEVE AND PERIPHERY OF OPENING = MINIMUM 0", MAXIMUM 1".  
 3. ANNULAR SPACE INSIDE STEEL SLEEVE = MINIMUM 0", MAXIMUM 5".  
 4. CABLES TO FILL MAXIMUM 45% OF CROSS-SECTIONAL AREA OF STEEL SLEEVE.  
 5. FILL ANY VOID TO MAXIMUM EXTENT POSSIBLE WITH HILTI FS-ONE MAX OR FS-ONE INTUMESCENT FIRESTOP SEALANT OR CP 618 FIRESTOP PUTTY STICK.



HILTI, Inc.  
Tulsa, Oklahoma USA (800) 879-8000

Sheet	1 of 1
Scale	3/32" = 1"
Date	Jan. 06, 2015

Drawing No.

**CAJ  
3232c**